



Manuals.plus /

› SUPRENT /

› SUPRENT Professional Hair Clipper and Trimmer Kit Instruction Manual

SUPRENT HARI CLIPPER-226BX-1C3

SUPRENT Professional Hair Clipper and Trimmer Kit Instruction Manual

Model: HARI CLIPPER-226BX-1C3

1. INTRODUCTION

Thank you for choosing the SUPRENT Professional Hair Clipper and Trimmer Kit. This manual provides essential information for the safe and effective use, setup, operation, and maintenance of your new grooming device. Please read these instructions thoroughly before first use and retain them for future reference.

2. IMPORTANT SAFETY INSTRUCTIONS

- Always keep the device away from water. Do not use it while bathing or showering.
- Avoid using the clipper near the face or eyes to prevent injury.
- Do not ingest or inhale small parts. Keep out of reach of children.
- This appliance is not intended for use by persons (including children) with reduced physical, sensory or mental capabilities, or lack of experience and knowledge, unless they have been given supervision or instruction concerning use of the appliance by a person responsible for their safety.
- Regularly clean the device to ensure optimal performance and hygiene.
- Ensure the device is completely dry before storing.

3. PACKAGE CONTENTS

Your SUPRENT Professional Hair Clipper and Trimmer Kit includes the following items:

- Hair Clipper/Trimmer Unit
- Adjustable Blade
- 6 Clipper Combs (various lengths)
- T-Blade Trimmer
- 3 Attachment Combs for T-Blade Trimmer
- Type-C Charging Cable
- Cleaning Brush

- Blade Oil

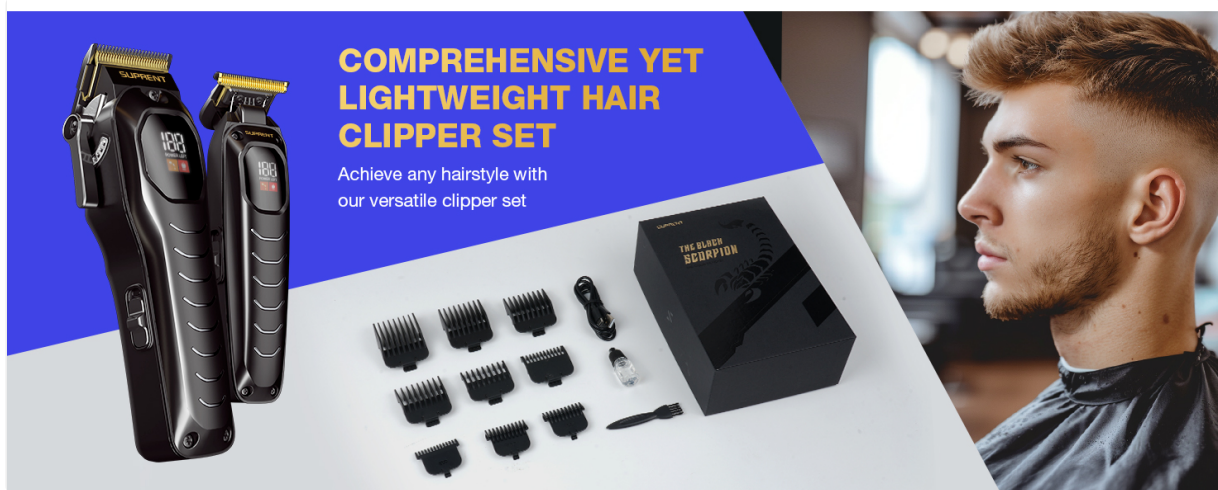


Image: The SUPRENT Hair Clipper and Trimmer Kit, showcasing the main clipper, T-blade trimmer, various guide combs, charging cable, and cleaning accessories.

4. SETUP

4.1 Charging the Device

Before initial use, fully charge the hair clipper. The device features a Lithium-Ion battery.

1. Connect the provided Type-C charging cable to the charging port on the clipper.
2. Plug the other end of the cable into a suitable USB power adapter (not included).
3. The LED display will indicate the charging status. Charge until the display shows a full battery (typically 100%).
4. A full charge takes approximately 3 hours and provides up to 180 minutes of runtime.



Image: The hair clipper connected to a USB-C charging cable, with its LED display showing the battery percentage and charging indicator.

4.2 Attaching Guide Combs

To achieve desired hair lengths, attach the appropriate guide comb:

1. Ensure the clipper is turned off.
2. Select the desired clipper comb or T-blade trimmer attachment.
3. Align the comb with the clipper blade and push it firmly until it clicks into place.
4. To remove, gently pull the comb away from the blade.

VERSATILITY IN HAIRCUTTING

Easily achieve your desired haircut



Professional Guide Combs



Image: The main hair clipper shown with a selection of professional guide combs, indicating different cutting lengths from 3mm to 19mm, and 1.5mm to 4.5mm for the trimmer.

5. OPERATION

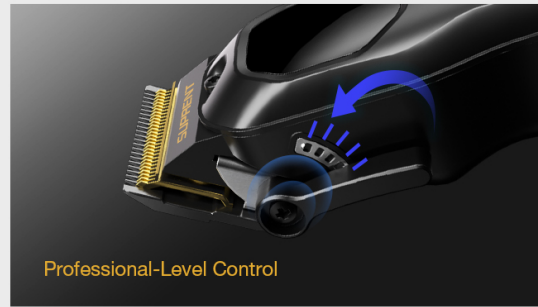
5.1 General Hair Cutting

1. Ensure the clipper is fully charged and the desired guide comb is securely attached.
2. Turn on the clipper using the power switch.
3. Guide the clipper over the desired area of the head, face, or neck. For best results, move the clipper against the natural direction of hair growth.
4. Use smooth, even strokes. Do not force the clipper through thick hair.
5. The adjustable taper lever allows for fine-tuning cutting lengths (0.5mm, 1mm, 1.5mm, 2mm, 2.5mm) without changing combs.

PROFESSIONAL HAIR CLIPPER



■ Sharpens ■ Durability



■ Adjustable Taper Lever ■ Precise Control

Image: Close-up views of the SUPRENT Professional Hair Clipper, highlighting its self-sharpened titanium-coated blades for sharpness and durability, and the adjustable taper lever for precise control over cutting length.

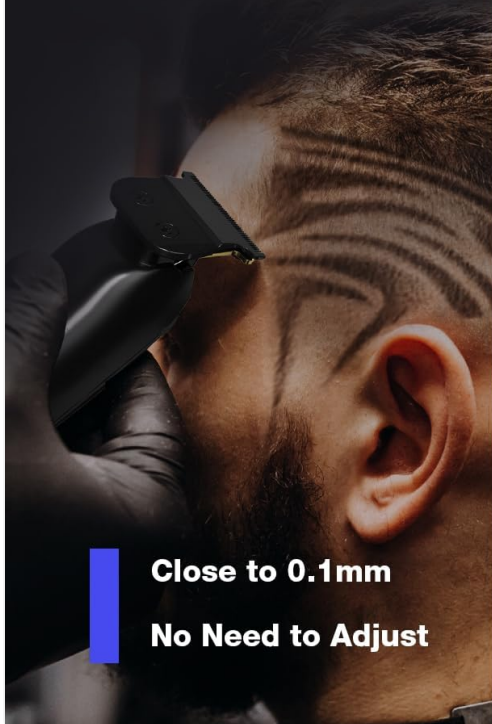
5.2 Precise Trimming and Edging

For detailed work, such as outlining, edging, or beard trimming, use the T-blade trimmer:

1. Ensure the T-blade trimmer is attached and powered on.
2. The T-blade is factory-calibrated for a zero-gap cut (approximately 0.1mm), requiring no manual adjustment.
3. Carefully guide the trimmer along the desired lines for styling, sculpting, and trimming.
4. Use the smaller attachment combs for the T-blade trimmer for specific beard lengths if needed.

FACTORY-CALIBRARATED ZERO GAP FOR PRECISE TRIMMING

Style, Sculpt,
and Trim with Ease



Close to 0.1mm

No Need to Adjust

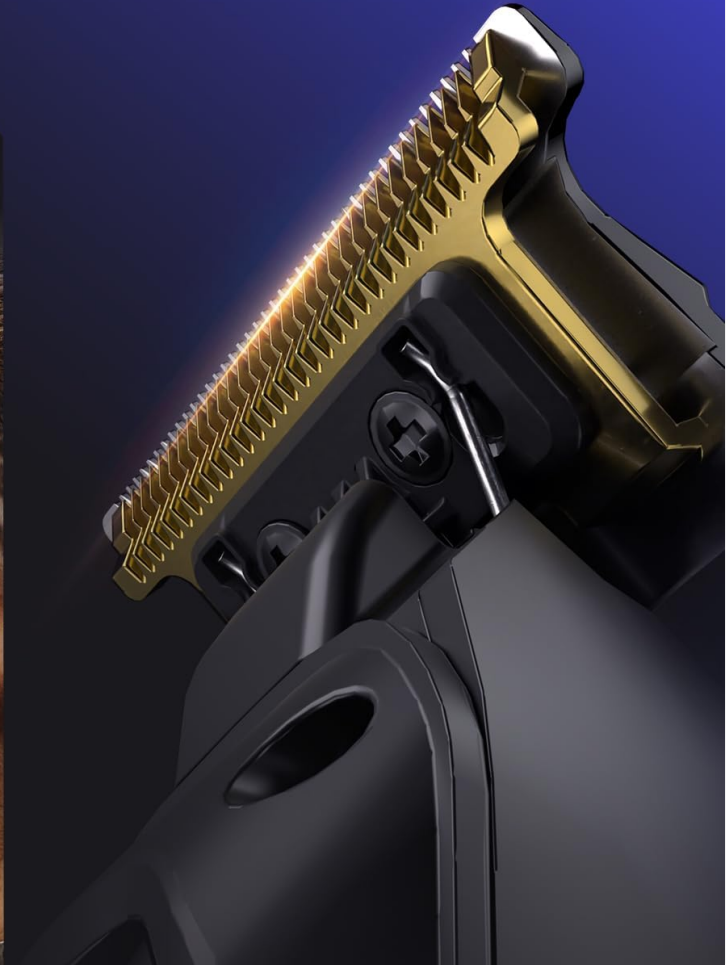


Image: A close-up of the SUPRENT T-blade trimmer in action, demonstrating its factory-calibrated zero-gap capability for precise trimming and detailing around the hairline.

5.3 Video Demonstration

Your browser does not support the video tag.

Video: A demonstration of the SUPRENT Hair Clipper and Trimmer Kit in use by a professional barber, showcasing its performance for fades, edging, and beard trimming.

6. MAINTENANCE

6.1 Cleaning the Blades and Device

Regular cleaning ensures the longevity and performance of your clipper.

1. Turn off the clipper and disconnect it from any power source.
2. Remove any attached guide combs.
3. Use the provided cleaning brush to remove hair clippings from the blades and the clipper body.
4. Wipe the clipper and attachments with a damp cloth. Do not rinse the entire unit under water unless specified as waterproof (this model is not specified as fully waterproof).
5. Allow all parts to dry completely before reassembling or storing.

6.2 Oiling the Blades

To maintain blade sharpness and smooth operation, oil the blades regularly.

1. After cleaning, apply a few drops of the included blade oil to the teeth of the blades.
2. Turn on the clipper for a few seconds to distribute the oil evenly.
3. Wipe off any excess oil with a clean cloth.

7. TROUBLESHOOTING

If you encounter issues with your SUPRENT Hair Clipper, refer to the following common solutions:

- **Clipper not turning on:** Ensure the battery is fully charged. If the issue persists, try using the clipper while connected to the charging cable (if supported for corded operation).
- **Poor cutting performance:** Clean the blades thoroughly to remove any hair buildup. Apply blade oil. Ensure the correct guide comb is properly attached. Blades may need replacement if they are dull.
- **Excessive noise or vibration:** Clean and oil the blades. Ensure no foreign objects are lodged in the blade mechanism.

For further assistance, please contact SUPRENT customer support.

8. SPECIFICATIONS

Model Number	HARI CLIPPER-226BX-1C3
Brand	SUPRENT
Blade Material	Titanium
Power Source	Corded Electric (for charging) / Cordless (battery operation)
Battery Type	Lithium-Ion
Charging Time	3 Hours
Runtime	Up to 180 minutes (3 hours)
Included Components	Hair clipper/trimmer, adjustable blade, 6 clipper combs, T-blade trimmer, 3 attachment combs
UPC	788362331870

9. WARRANTY AND SUPPORT

No specific manufacturer warranty information is provided with this product. For any product-related inquiries, technical support, or warranty claims, please contact the seller or SUPRENT customer service directly through their official channels.