

Joydeco JD21035-PSG-120

Joydeco Blackout Curtain Instruction Manual

Model: JD21035-PSG-120

1. INTRODUCTION

This manual provides detailed instructions for the setup, operation, maintenance, and safety of your Joydeco Blackout Curtains. Designed to enhance your living space, these thermal insulated room darkening drapes offer privacy, noise reduction, and energy efficiency. Please read this manual thoroughly before installation and use.

2. PRODUCT FEATURES

- **Soft Textured Fabric:** Crafted from 100% polyester, these curtains offer a soft drape and elegant flow. The heavy-duty material ensures smooth hanging, while the linen-inspired visual creates a relaxed and stylish home environment.
- **100% Blackout:** These room darkening curtains are designed to block all sunlight, providing complete darkness for improved sleep and privacy.
- **Thermal Insulation:** Insulates against heat and cold, contributing to lower energy costs and maintaining a comfortable room temperature.
- **UV Protection:** Safeguards furniture and floors from sun damage and fading.
- **Noise Reduction:** Helps to reduce outside noise, creating a more serene and quiet indoor environment.
- **Multiple Hanging Options:** Can be installed effortlessly using three methods: back tab, rod pocket (3.15" diameter), or clip rings (not included).
- **Versatile Use:** Suitable for various settings including living rooms, bedrooms, patios, or as room dividers. They seamlessly integrate with various decor styles such as boho, vintage, and modern farmhouse.

Living Room



Bedroom



Dining Room



Image: Joydeco blackout curtains shown in various room settings: living room, bedroom, and dining room, highlighting their versatile application.



Image: A close-up view of the curtain fabric, emphasizing its soft texture and quality.

3. SPECIFICATIONS

Attribute	Detail
Brand	Joydeco
Model Name	GD5569 Blackout Curtains
Model Number	JD21035-PSG-120
Color	Pure Sage
Material	100% Polyester
Product Dimensions	120"L x 52"W (per panel)

Size	52"W x 120"L (Pack of 2)
Opacity	Blackout
Special Features	100% Blackout, Privacy Assured, Room Darkening, Thermal Insulated, Noise Reducing, UV Protection
Room Type	Bedroom, Dining Room, Kids room, Laundry Room, Living Room
Style	Modern
Pattern	Solid
Curtain Form	Drapes
Top Style	Back Tab
Hanging Method	Back Tab, Rod Pocket, Clip Rings (not included)
Number of Items	2
Lining Description	Unlined
Item Weight	7.72 pounds
Indoor/Outdoor Usage	Indoor

4. SETUP AND INSTALLATION

Your Joydeco Blackout Curtains offer multiple hanging options to suit your preference and existing hardware.

4.1 Choosing the Right Size

Before hanging, ensure you have selected the correct curtain width and length for your window. For optimal fullness, the curtain width should be 1.5-2 times the rod width. For example, if your rod is 50 inches wide, your curtains should have a total width of 75-100 inches.



There may be slight color differences due to different lighting and electronic devices



iPhone



iPad



Notebook



Computer

Image: A visual guide illustrating how to measure and select the appropriate curtain size for different window heights and rod widths.

4.2 Hanging Methods

These curtains can be hung using one of three methods:

1. **Rod Pocket:** Slide your curtain rod through the sewn-in rod pocket at the top of the curtain. This method creates a gathered, classic look and fits most standard rods up to 3.15 inches in diameter.
2. **Back Tab:** Insert your curtain rod through the fabric loops located on the back of the top hem. This creates neat, tailored pleats and a more formal appearance.
3. **Clip Rings (Not Included):** Attach clip rings (purchased separately) to the top edge of the curtain panels, then slide the rings onto your curtain rod. This allows for easy opening and closing and can add a decorative touch.

THREE HANGING METHODS

BACK TAB



CLIP NOT INCLUDE



ROD POCKET



Image: A detailed graphic demonstrating the three available hanging styles: back tab, rod pocket, and using clip rings.

5. OPERATING YOUR CURTAINS

Joydeco Blackout Curtains are designed for ease of use and effective light control.

5.1 Light and Privacy Control

To achieve maximum room darkening and privacy, ensure both curtain panels are fully closed and meet in the middle. The 100% blackout feature will block all incoming light, making them ideal for bedrooms, media rooms, or any space where complete darkness is desired.

Video: Demonstration of the blackout capability of the curtains, showing how effectively they block light when closed.

Video: A user demonstrating the blackout effect of the curtains in a room, highlighting their effectiveness in creating darkness.

5.2 Thermal and Noise Benefits

When closed, the curtains also provide thermal insulation, helping to regulate room temperature and reduce energy consumption. The thick fabric contributes to noise reduction, creating a quieter indoor environment.



Image: Visual representation of the thermal insulation properties, showing heat reduction indoors and UV shielding outdoors.

NOISE REDUCTION

OPEN



CLOSE



Image: A comparison illustrating noise reduction, with a decibel meter showing lower readings when the curtains are closed.

6. MAINTENANCE AND CARE

Proper care will ensure the longevity and appearance of your Joydeco Blackout Curtains.

- **Washing:** Machine wash cold. Do not bleach.
- **Drying:** Tumble dry low.
- **Ironing:** Iron on low temperature if needed. The curtains are designed to be wrinkle-resistant, maintaining vibrant colors and a smooth appearance after washing.

7. TROUBLESHOOTING

7.1 Wrinkles

Upon unpacking, your curtains may have some wrinkles due to packaging. These typically relax and disappear over time with hanging. For faster removal, a low-temperature iron can be used, or the curtains can be steamed.

7.2 Light Leakage

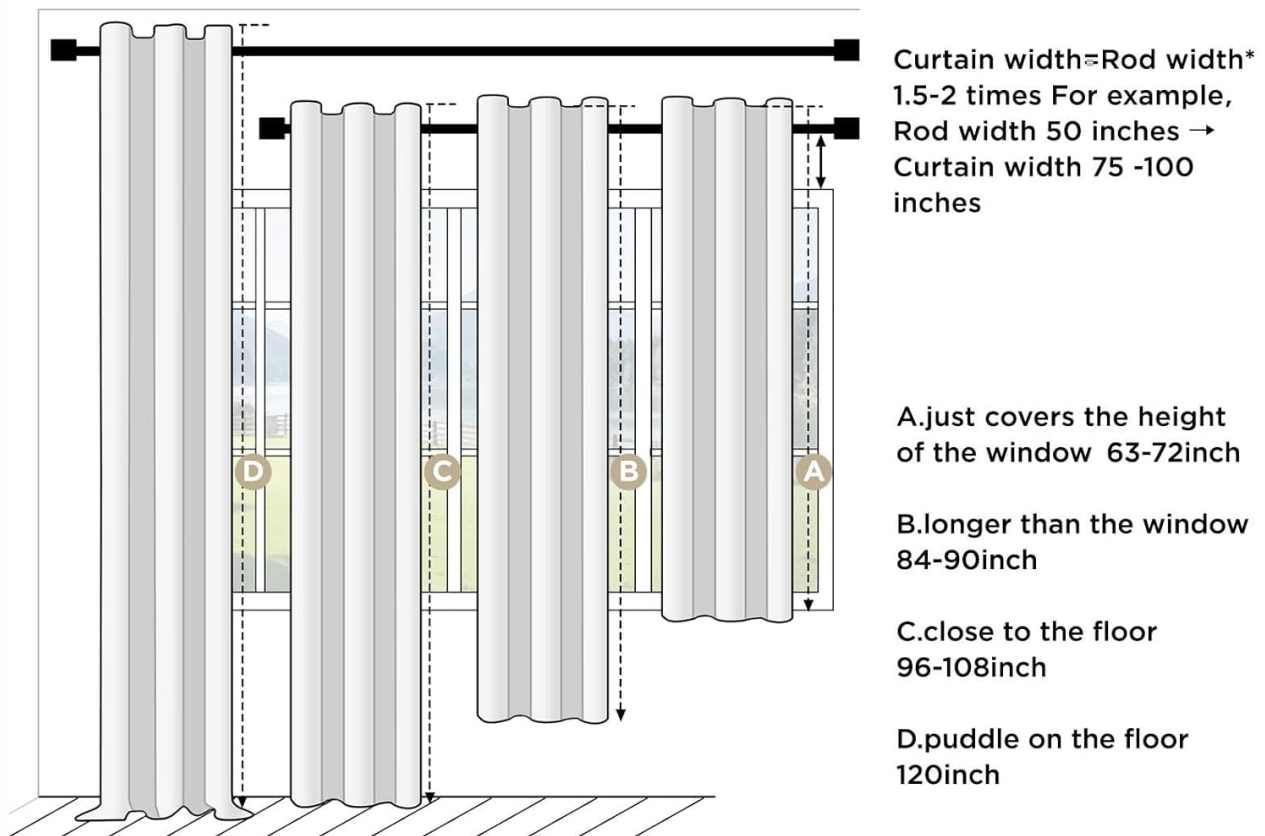
If you experience minor light leakage, ensure the curtains are properly installed and fully cover the window frame. Adjusting the curtain rod to extend slightly beyond the window width can help minimize gaps. For grommet-style curtains, ensure the grommets are evenly spaced and the fabric is pulled taut.

7.3 Color Variation

Please note that there may be slight color differences due to varying lighting conditions and electronic device displays. This is normal and does not indicate a product defect.

JOYDECO

HOW TO CHOOSE THE CURTAIN SIZE?



NOTE

As curtains are in different top styles, like rod pocket, back tab or grommet, there may be a slight error between the measured and actual length.

Image: The curtain fabric displayed under various lighting conditions to illustrate potential color perception differences.

8. SAFETY INFORMATION

- Always follow manufacturer's instructions for installation and cleaning.

- Keep curtains away from heat sources to prevent fire hazards.
- If using cords or ties, keep them out of reach of children and pets to prevent strangulation hazards.

9. WARRANTY AND SUPPORT

For any questions, concerns, or support regarding your Joydeco Blackout Curtains, please refer to your purchase documentation or contact Joydeco customer service. Specific warranty details are typically provided at the time of purchase.