



[Manuals.plus](#) /

› [3DMakerpro](#) /

› 3DMakerpro Moose 3D Scanner (Upgraded Version) User Manual

3DMakerpro Moose (Upgraded Version)

3DMakerpro Moose 3D Scanner (Upgraded Version) User Manual

Model: Moose (Upgraded Version)

Brand: 3DMakerpro

1. INTRODUCTION

This manual provides detailed instructions for the safe and effective use of your 3DMakerpro Moose 3D Scanner (Upgraded Version). Please read this manual thoroughly before operating the device and retain it for future reference. Proper understanding of these instructions will ensure optimal performance and longevity of your scanner.

2. PRODUCT OVERVIEW

2.1. Package Contents

The 3DMakerpro Moose 3D Scanner package includes the following items:

- 3D Scanner Unit
- Power Adapter
- Data Transfer Cable
- Tripod
- Turntable
- User Manual



Figure 1: Package Contents. The image displays the 3DMakerpro Moose 3D scanner, a power adapter, a data transfer cable, a tripod, a turntable, and a printed manual.

2.2. Key Features

- **Markerless Technology:** Enables immediate scanning without the need for physical markers, saving time. The scanner features an improved single-frame encoded structured light unit for enhanced surface feature detection.
- **High Precision Realism:** Utilizes blue light technology to achieve an accuracy of 0.03mm and a resolution of 0.07mm, capturing fine details for realistic models suitable for printing and display.
- **AI Visual Tracking:** Incorporates AI algorithms for intelligent identification of scan damage and automated model repair, simplifying the scanning process.
- **Realistic Color Reproduction:** Equipped with a 24-bit color camera that supports 100% restoration of real-world colors, reproducing vibrant colors, contrast, and fine details in the 3D model.
- **Anti-Shake Module:** Features an optical anti-shake module for stable scanning, even for first-time users. Includes a 'Rescanning' function to continue scans after interruptions.
- **Extended Scan Depth:** Upgraded depth exploration function significantly improves vertical scanning capability, allowing comprehensive capture of models with complex structures up to 100mm.
- **Lifetime Free OTA Software:** The JMStudio scan software provides a seamless integrated process for scanning, editing, and optimization, with lifetime free over-the-air (OTA) upgrades.
- **Wide Compatibility:** Compatible with Windows 10/11 (64-bit) and MacOS 12/13. Supports output in OBJ, STL, PLY, and

ASC formats for broad compatibility with most 3D software.

3. SETUP

3.1. Hardware Connection

1. Connect the 3D scanner unit to the tripod.
2. Connect the power adapter to the scanner and a power outlet.
3. Connect the data transfer cable from the scanner to your computer's USB port.
4. Ensure all connections are secure before proceeding.

3.2. Software Installation (JMStudio)

The JMStudio software is required for operating the 3D Makerpro Moose 3D Scanner. It is not included on a physical medium and must be downloaded from the official 3D Makerpro website. Search for "JMStudio" online to find the download page.

1. Download the appropriate JMStudio software version for your operating system (Windows 10/11 64bit or MacOS 12/13).
2. Follow the on-screen instructions to install the software on your computer.
3. Once installed, launch JMStudio.

3.3. Software Language Setting

To change the software language to English or another preferred language:

1. In the JMStudio software, navigate to the 'File' menu.
2. Select 'Setting'.
3. In the settings window, click on the 'Language' tab.
4. Choose your desired language (e.g., 'English').
5. Click 'Apply' to save the changes.



ソフトウェアの言語設定

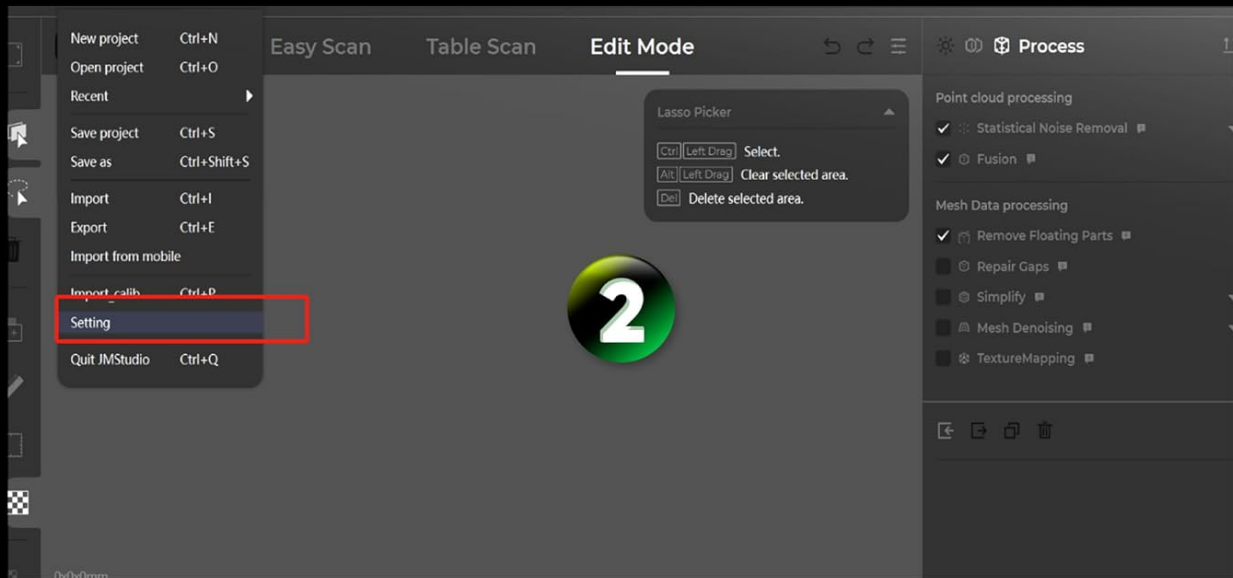


Figure 2: JMStudio Software - Accessing Settings. The image shows the JMStudio interface with the 'File' menu expanded, highlighting the 'Setting' option.

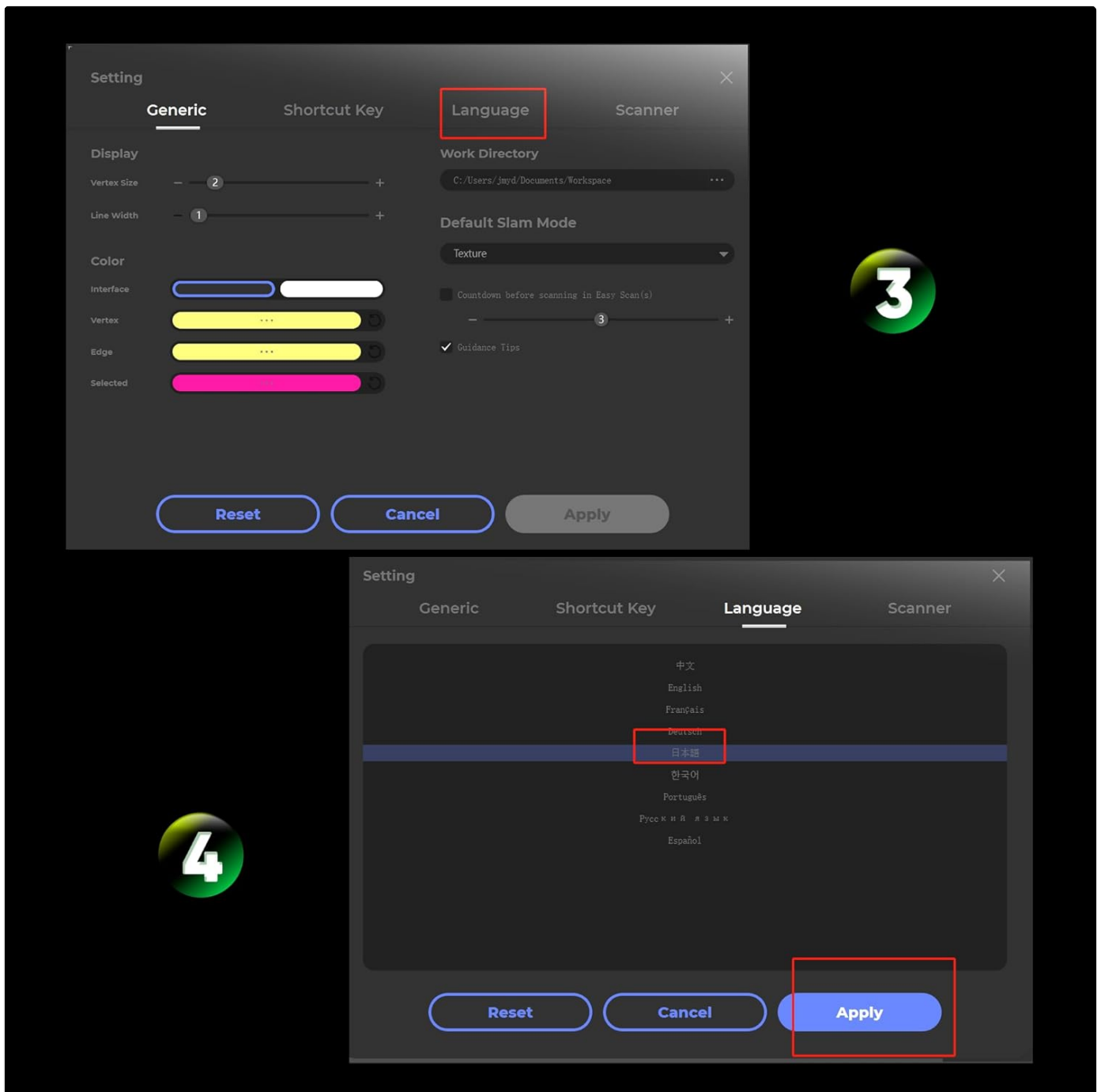


Figure 3: JMStudio Software - Language Selection. This image illustrates the language settings within JMStudio, showing how to select a language and apply the change.

4. OPERATING INSTRUCTIONS

4.1. Scanning Modes

The 3DMakerpro Moose scanner supports two primary scanning modes:

- **Handheld Scan:** Suitable for objects ranging from 15mm to 1500mm. This mode offers flexibility for larger or irregularly shaped items.
- **Turntable Scan:** Ideal for objects between 15mm and 300mm. This mode provides automated rotation for consistent and detailed scans of smaller items.

広範なスキャン範囲

15mmから1500mmまで

コインから子供まで、400mmの作業距離内でオブジェクトをスキャンします



ハンドヘルドスキャン

15~1500mmのオブジェクトサイズに適しています



ターンテーブルスキャン

15~300mmのオブジェクトサイズに適しています



Figure 4: Handheld and Turntable Scanning Modes. The image shows examples of both scanning methods, with a person using handheld mode and an object on a turntable for automated scanning.

4.2. Basic Scanning Procedure

1. **Prepare the Object:** Place the object to be scanned on a stable surface or the turntable. Ensure adequate lighting.
2. **Launch JMStudio:** Open the JMStudio software on your computer.
3. **Select Scanning Mode:** Choose either 'Easy Scan' (for handheld) or 'Table Scan' (for turntable) within the software.
4. **Start Scan:** Follow the on-screen prompts to initiate the scan. For handheld mode, move the scanner smoothly around the object. For turntable mode, the turntable will rotate automatically.
5. **Monitor Progress:** Observe the real-time 3D model reconstruction on your computer screen. The software will guide you if adjustments are needed.
6. **Complete Scan:** Once the desired data is captured, stop the scan in the software.
7. **Process Data:** Use the software's processing tools to align, merge, and optimize the point cloud data into a complete 3D model.
8. **Export Model:** Export the final 3D model in your preferred format (OBJ, STL, PLY, ASC).

24ビットカラーテクスチャー (青色LED光源)

100%のテクスチャー復元のための24ビットカメラ

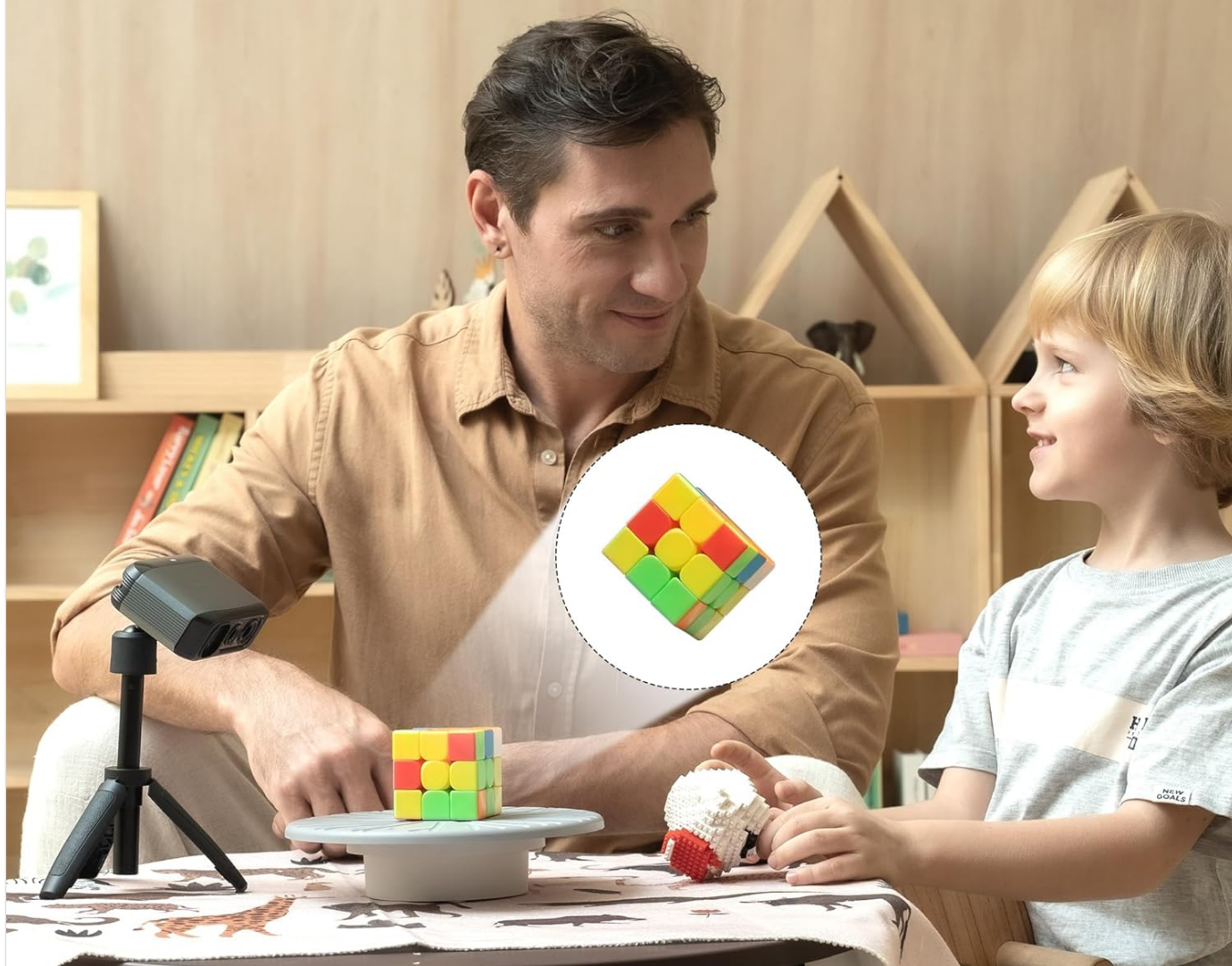


Figure 5: Capturing Color Texture. This image shows the scanner in use, highlighting its ability to capture 24-bit color textures from objects like a Rubik's cube.

ブルーライト技術

0.03mmの精度と0.07mmの解像度



Figure 6: Blue Light Technology in Action. The image demonstrates the scanner's blue light technology by showing a detailed 3D model of a shoe on a laptop screen, created by the scanner.

マーカーレス技術

コーヒー一杯の時間を本当の時短にします



Figure 7: Markerless Scanning. This image highlights the scanner's markerless technology, showing it ready to scan a detailed mechanical component without the need for reference markers.

5. MAINTENANCE

To ensure the longevity and optimal performance of your 3DMakerpro Moose 3D Scanner, follow these maintenance guidelines:

- **Cleaning:** Regularly clean the scanner's lenses and body with a soft, dry, lint-free cloth. Avoid using abrasive materials or chemical cleaners that could damage the surfaces.
- **Storage:** Store the scanner in a dry, dust-free environment when not in use. Use the provided carrying case or a protective cover to prevent dust accumulation and accidental damage.
- **Temperature and Humidity:** Operate and store the scanner within recommended temperature and humidity ranges to prevent damage to electronic components.
- **Cable Care:** Handle cables carefully. Avoid sharp bends or excessive pulling that could damage the connectors or internal wiring.

6. TROUBLESHOOTING

If you encounter issues with your 3DMakerpro Moose 3D Scanner, consider the following common troubleshooting steps:

- **Scanner Not Detected:** Ensure all cables are securely connected. Try a different USB port on your computer. Restart both the scanner and your computer. Verify that the JMStudio software is up to date.
- **Poor Scan Quality:** Check the object's surface for highly reflective or transparent areas, which can be difficult to scan. Apply a matte scanning spray if necessary. Ensure stable lighting conditions and minimize vibrations during scanning. Adjust scanning distance as per recommendations.
- **Software Issues:** If the software crashes or behaves unexpectedly, try restarting it. Ensure your computer meets the minimum system requirements. Reinstalling the software may resolve persistent issues.
- **Incomplete Scans:** For complex objects, try scanning from multiple angles and then merging the data in JMStudio. Utilize the 'Rescanning' function if a scan is interrupted.
- **Language Setting Reverts:** Ensure you click 'Apply' after selecting your preferred language in the software settings.

If problems persist after attempting these steps, please contact customer support for further assistance.

7. SPECIFICATIONS

The following table outlines the key specifications for the 3DMakerpro Moose 3D Scanner (Upgraded Version):

Feature	Specification
Brand	3DMakerpro
Product Model Number	Moose (Upgraded Version)
Package Dimensions	26.6 x 26 x 9.6 cm
Item Weight	1.63 Kilograms
Power Source	AC
Accuracy	0.03mm
Resolution	0.07mm
Color Texture	24-bit Color
Light Source	Blue LED
Working Distance	150-400mm
Object Size (Handheld)	15-1500mm
Object Size (Turntable)	15-300mm
Single Capture Range	200x100mm
Output Formats	OBJ/STL/PLY/ASC
Compatible Systems	Windows 10/11 64bit, MacOS 12/13/14 (supports M1/M2)
Recommended Computer	Intel Core i7 8th, 16GB RAM, NVIDIA 3060 GPU with 4GB VRAM

Moose		Moose lite	
0.03mm	精度	0.05mm	
0.07mm	解像度	0.10mm	
24ビットカラーテクスチャー	カラーテクスチャー	モノクロテクスチャー	
ブルーLED	光源	NIR	
150-400mm	作業距離	150-400mm	
150-1500mm	一般的な物体のサイズ	150-1500mm	
200x100mm	単一のキャプチャ範囲	200x100mm	
115x70x35mm (4.53x2.76x1.38 inch)	寸法	115x70x35mm (4.53x2.76x1.38 inch)	
280g (0.62 lb)	重さ	250g (0.55 lb)	
OBJ/STL/PLY/ASC	出力形式	OBJ/STL/PLY/ASC	
Windows10/11 64bit, MacOS12/13/14 (support M1/M2)	互換性のあるシステム	Windows10/11 64bit, MacOS12/13/14 (support M1/M2)	
Intel Core i7 8th, 16GB RAMNVIDIA 3060 GPU with 4GB VRAM	推奨されるコンピューターの要件	Intel Core i7 8th, 16GB RAMNVIDIA 3060 GPU with 4GB VRAM	

Figure 8: Moose vs. Moose Lite Specifications. This image provides a detailed comparison table of technical specifications for the Moose and Moose Lite models.

8. WARRANTY AND SUPPORT

8.1. Warranty Information

The main unit of the 3DMakerpro Moose 3D Scanner comes with a **2-year warranty**. Accessories included in the package are covered by a **1-year warranty**. Please retain your proof of purchase for warranty claims.

8.2. Customer Support

For any inquiries or technical assistance, please contact 3DMakerpro customer service:

- **Email Support:** Available during China time 9:00 - 18:00.
- **Email and Phone Support:** Available during China time 23:00 - 8:00.

Please refer to the official 3DMakerpro website for the most current contact information and support resources.