

## SENIX STX2-M1

# SENIX 2X2 40V Max Cordless Snow Blower (STX2-M1) - User Manual

Brand: SENIX | Model: STX2-M1

### INTRODUCTION

This manual provides essential information for the safe and efficient operation, setup, and maintenance of your SENIX 2X2 40V Max Cordless Snow Blower. Please read all instructions carefully before using the product to ensure optimal performance and user safety.



*The SENIX 2X2 40V Max Cordless Snow Blower, shown with its dual battery system and charger, ready for use.*

## SAFETY INFORMATION

Always prioritize safety when operating any power equipment. Failure to follow these instructions may result in serious injury or property damage.

- Always keep hands and feet away from rotating parts.
- Wear appropriate protective gear, including gloves and eye protection.
- Do not operate in enclosed spaces to avoid carbon monoxide poisoning.
- Store the snow blower and batteries in a cool, dry place away from heat sources and direct sunlight.
- Do not use in snow conditions that may damage the auger or other parts.
- Always follow the manufacturer's instructions for operation and maintenance.
- Ensure the area is clear of debris, rocks, and other objects that could be thrown by the auger.
- Never direct the discharge chute towards people, animals, or property.

## PRODUCT OVERVIEW AND FEATURES

The SENIX 2X2 40V Max Cordless Snow Blower is designed for efficient snow clearing with advanced features for user convenience and performance.

### Key Features:

- **Efficient Snow Clearing:** Clears up to 680 lbs of snow per minute with a 21-inch clearing path and up to 33 ft throwing distance.
- **Superior Removal Performance:** Adjustable clearing depth of 8–12 inches, suitable for various snow conditions.
- **Visibility and Mobility:** Equipped with a built-in LED light bar for low-light operation and 7-inch rear wheels for easy maneuverability.
- **Convenient Design:** Features a foldable and height-adjustable handle for user comfort and compact storage. Weighs only 30 lbs.
- **Quiet and Powerful:** Brushless motor provides quiet operation with zero emissions. Optimized for fresh, powdery snow.
- **Power Share Ecosystem:** Part of the SENIX Power Share ecosystem, allowing the use of the same 20V & 40V batteries across all SENIX tools.

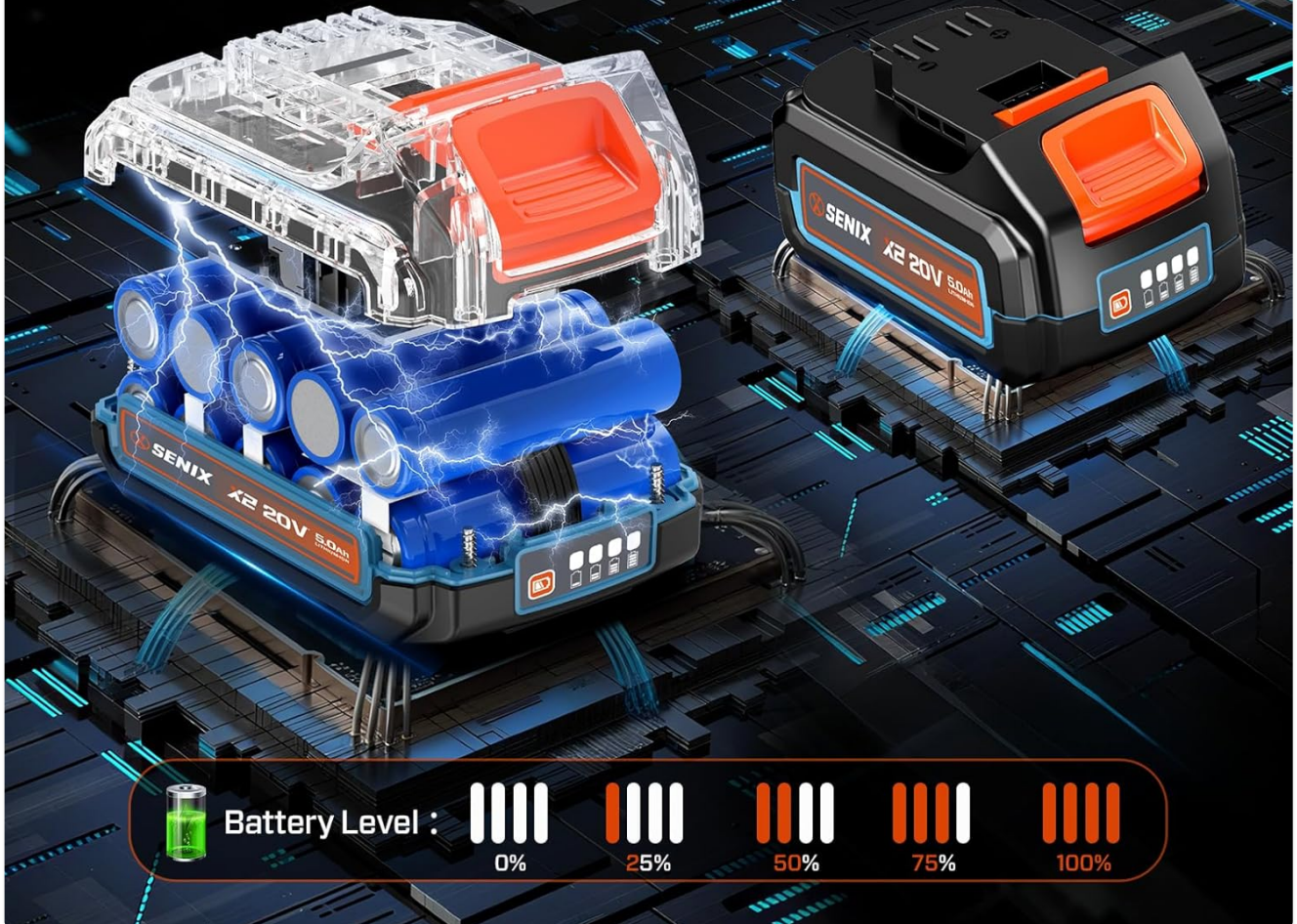
### Visual Features:

# 2X5000MAH BATTERIES

## Large Capacity Battery

 **140 Min**  
Charging Time

 **20 Min MAX**  
Working Time



Detailed view of the two 5000mAh batteries, highlighting their charging time of 140 minutes and maximum working time of 20 minutes, along with battery level indicators.



# POWERFUL BRUSHLESS MOTOR

Snow Removal Max **680LBS**/MIN

**1800** RPM

**1800** W

**40V**   
20V + 20V LITHIUM-ION

*Close-up of the snow blower's powerful 1800W brushless motor, capable of 1800 RPM and removing up to 680 lbs of snow per minute.*



# **STEEL 2-BLADE AUGER**

## **CUTS AN 21"X 12" PATH**

*The durable steel 2-blade auger, engineered to efficiently cut a snow path of 21 inches wide and 12 inches deep.*



# BUILT-IN LED LIGHT

## for Clear Snow Anytime



*The built-in LED light bar provides enhanced visibility for operating the snow blower in low-light conditions, such as early mornings or evenings.*

### Product Videos:

Your browser does not support the video tag.

*Official product video showcasing the SENIX 2X2 40V Max Cordless Snow Blower in operation, highlighting its key features and ease of use.*

Your browser does not support the video tag.

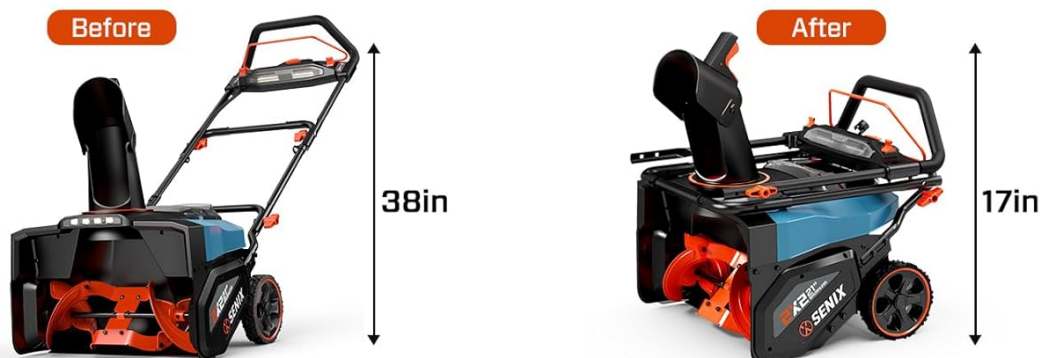
*Detailed official video demonstrating the SENIX 2X2 40 Volt 21-Inch Dual Battery Cordless Snow Blower, including assembly, battery installation, and snow clearing performance.*

### SETUP

Follow these steps to assemble your SENIX 2X2 40V Max Cordless Snow Blower.

1. **Unpacking:** Carefully remove all components from the packaging. Inspect for any damage.

2. **Handle Assembly:** Attach the lower and upper handle sections using the provided knobs and bolts. Ensure all connections are secure. The foldable design allows for adjustment and compact storage.
3. **Chute Assembly:** Secure the discharge chute to the snow blower body. The chute's direction can be adjusted using the handle mechanism.
4. **Battery Installation:** Open the battery compartment cover. Insert the two 40V batteries into their respective slots until they click into place. Close the cover securely.



*The snow blower features a convenient foldable and height-adjustable handle, allowing for compact storage, reducing its height from 38 inches to 17 inches.*

## OPERATING INSTRUCTIONS

Proper operation ensures effective snow removal and extends the life of your snow blower.

1. **Starting the Unit:** Press and hold the safety lock button, then squeeze the operating bar. The auger will begin to rotate.
2. **Adjusting Chute Direction:** Use the chute adjustment lever to direct the snow discharge in the desired direction.



The chute offers 180-degree rotation.

3. **Clearing Snow:** Push the snow blower forward at a steady pace. Overloading the unit can reduce performance. For deep or heavy snow, make multiple passes.
4. **Using LED Lights:** Activate the LED light bar for improved visibility during operation in low-light conditions.
5. **Stopping the Unit:** Release the operating bar to stop the auger. Release the safety lock button.



*A user demonstrates the snow blower's effective clearing capabilities, showing a 21-inch clearing width and up to 12-inch clearing depth.*



*The snow blower in action, demonstrating its ability to throw snow up to 33 feet, with an inset showing the 180-degree adjustable chute.*

## Operation Videos:

Your browser does not support the video tag.

*Official product video demonstrating the SENIX Cordless Snow Blower in various snow conditions.*

Your browser does not support the video tag.

*Short official video highlighting the battery features and power of the SENIX Cordless Snow Blower.*

## MAINTENANCE

Regular maintenance ensures the longevity and optimal performance of your snow blower.

- **Battery Care:** Always charge batteries fully before storage and after each use. Store batteries in a cool, dry place.

- **Cleaning:** After each use, clear any snow or debris from the auger housing, chute, and motor area. Use a soft cloth; do not use harsh chemicals.
- **Auger Inspection:** Periodically check the auger for wear or damage. Replace worn parts as needed.
- **Storage:** For long-term storage, clean the unit thoroughly, remove batteries, and store in a dry, protected area. The foldable handle allows for compact storage.

## TROUBLESHOOTING

If you encounter issues with your snow blower, refer to the following common solutions:

- **Unit Not Starting:** Ensure batteries are fully charged and properly inserted. Check that the safety lock button and operating bar are engaged correctly.
- **Reduced Snow Throwing Distance:** This can occur with wet, heavy snow. Try reducing the forward speed or clearing smaller sections. Ensure the chute is not clogged.
- **Auger Not Rotating:** Check for obstructions in the auger housing. Disconnect power before inspecting.
- **Short Run Time:** Ensure batteries are fully charged. Battery performance can be affected by extreme cold. Consider having spare charged batteries for larger tasks.

For persistent issues, contact SENIX customer support.

## SPECIFICATIONS

| Specification      | Detail                         |
|--------------------|--------------------------------|
| Brand              | SENIX                          |
| Model Number       | STX2-M1                        |
| Power Source       | Battery Powered (2x 40V Max)   |
| Voltage            | 40 Volts                       |
| Clearing Width     | 21.7 Inches                    |
| Ideal Snow Depth   | 8-12 Inches (25.4 Centimeters) |
| Max Throw Distance | 33 Feet                        |
| Snow Capacity      | 680 Lbs/Min                    |
| Motor Type         | 1800W Brushless Electric       |
| Item Weight        | 30 Pounds                      |
| Product Dimensions | 25"D x 21.7"W x 23.6"H         |
| UPC                | 843212102656                   |

## WARRANTY AND SUPPORT

SENIX offers comprehensive warranty coverage for your peace of mind:




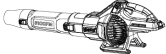
- **Tool Warranty:** 5 years
- **Battery Warranty:** 3 years
- **Charger Warranty:** 3 years

For warranty claims, technical support, or replacement parts, please refer to the contact information provided in your product packaging or visit the official SENIX website.

© 2025 SENIX. All rights reserved.

Related Documents - STX2-M1

|   |  |
|---|--|
| <div><div>Instruction Manual</div><div>Model: STX2-M</div><div></div></div>   | <p><a href="#">SENIX STX2-M 18" Cordless Snow Blower Instruction Manual</a></p> <p>Comprehensive instruction manual for the SENIX STX2-M 18-inch cordless snow blower. Covers safety, assembly, operation, maintenance, and troubleshooting for efficient snow removal.</p>                                      |
| <div><div>Instruction Manual</div><div>Model: STX2-M1</div><div></div></div>  | <p><a href="#">SENIX STX2-M1 21" Cordless Snow Blower Instruction Manual</a></p> <p>Comprehensive instruction manual for the SENIX STX2-M1 21" Cordless Snow Blower, covering safety, assembly, operation, maintenance, and troubleshooting. Learn how to safely and effectively use your SENIX snow blower.</p> |
| <div><div>Instruction Manual</div><div>Model: STX2-L</div><div></div></div>   | <p><a href="#">SENIX STX2-L 13" Cordless Snow Shovel Instruction Manual</a></p> <p>This instruction manual provides detailed safety, assembly, operation, maintenance, and troubleshooting information for the SENIX STX2-L 13" Cordless Snow Shovel. Learn how to safely use and maintain your snow shovel.</p> |
| <div><div>Instruction Manual</div><div>Model: BLAX2-M2</div><div></div></div> | <p><a href="#">SENIX BLAX2-M2 40V Cordless Leaf Blower Instruction Manual</a></p> <p>Comprehensive instruction manual for the SENIX BLAX2-M2 40V Cordless Leaf Blower, covering safety, assembly, operation, maintenance, troubleshooting, and warranty information.</p>   |

|  |  |
|--|--|
| <div><div>Instruction Manual</div><div>Model CSX2-M2</div><div><div><div><div>SENIX</div></div><div><div>2X2 40V</div><div>BRUSHLESS</div></div></div><div>CORDLESS CHAINSAW</div></div><div></div><div><div><div>SAFETY</div><div>WARNING</div><div>CAUTION</div><div>NOTE</div></div><div><div>WARNING: Read and understand all instructions before using this tool. Failure to do so may result in injury or death.</div><div>WARNING: Do not use this tool for any purpose other than that intended.</div><div>WARNING: Do not use this tool for any purpose other than that intended.</div></div><div><div>YAT USA, INC. 10000 E. 10th Avenue, Suite 100, Denver, CO 80231</div><div>For customer support, please call 1-800-850-2289 or visit our website at <a href="http://www.yatusa.com">www.yatusa.com</a></div></div></div></div> | <p><a href="#">SENIX CSX2-M2 40V Brushless Cordless Chainsaw Instruction Manual</a></p> <p>Official instruction manual for the SENIX CSX2-M2 40V Brushless Cordless Chainsaw. Covers safety, assembly, operation, maintenance, troubleshooting, and warranty information. Provided by YAT USA INC.</p>                   |
| <div><div>Instruction Manual</div><div>Model BLAX6-M1</div><div><div><div>SENIX</div></div><div><div>X6 60V</div><div>BRUSHLESS</div></div></div><div>CORDLESS LEAF BLOWER</div></div> <div></div> <div><div><div>SAFETY</div><div>WARNING</div><div>CAUTION</div><div>NOTE</div></div><div><div>WARNING: Read and understand all instructions before using this tool. Failure to do so may result in injury or death.</div><div>WARNING: Do not use this tool for any purpose other than that intended.</div><div>WARNING: Do not use this tool for any purpose other than that intended.</div></div><div><div>YAT USA, INC. 10000 E. 10th Avenue, Suite 100, Denver, CO 80231</div><div>For customer support, please call 1-800-850-2289 or visit our website at <a href="http://www.yatusa.com">www.yatusa.com</a></div></div></div>       | <p><a href="#">SENIX BLAX6-M1 60V Cordless Leaf Blower Instruction Manual</a></p> <p>Comprehensive instruction manual for the SENIX BLAX6-M1 60V Cordless Leaf Blower, covering safety guidelines, unit identification, specifications, assembly, operation, maintenance, troubleshooting, and warranty information.</p> |