

[Manuals.plus](#) /

› [KSIPZE](#) /

› KSIPZE RGB LED Strip Light 30m with Bluetooth App and Remote Control (Model ST51)

KSIPZE ST51

KSIPZE RGB LED Strip Light 30m User Manual

Model: ST51

INTRODUCTION

Thank you for choosing the KSIPZE RGB LED Strip Light. This manual provides essential information for the safe and efficient use of your 30-meter LED strip, featuring Bluetooth app and infrared remote control, music synchronization, and timer functions. Please read these instructions carefully before installation and operation, and retain them for future reference.



Image: KSIPZE RGB LED Strip Light illuminating a room.

PRODUCT FEATURES

The KSIPZE RGB LED Strip Light offers a versatile lighting experience with the following key features:

- **Dual Control Options:** Control your LED strip using either the included infrared remote control or a dedicated Bluetooth app on your smartphone.
- **Extensive Color Palette:** Access millions of colors to customize your lighting environment.
- **Adjustable Brightness and Speed:** Easily dim the lights or change the speed of dynamic lighting modes.
- **Smart Music Synchronization:** A built-in sensitive microphone allows the LED lights to change color and rhythm with ambient music, creating an immersive atmosphere.
- **Programmable Timer Function:** Set schedules for the LED strip to automatically turn on or off at specific times, promoting energy efficiency and convenience.
- **Flexible and Cuttable Design:** The strip is flexible for easy installation around corners and can be cut at designated marks to fit various lengths.



Image: Visual representation of the LED strip's main features.

PACKAGE CONTENTS

Please check the package for the following items:

- 1 x KSIPZE RGB LED Strip (30 meters)
- 1 x IR Remote Control
- 1 x Power Adapter (Electric Cable Type)
- 1 x Controller Box (integrated with Bluetooth module)
- 1 x User Manual

SAFETY INSTRUCTIONS

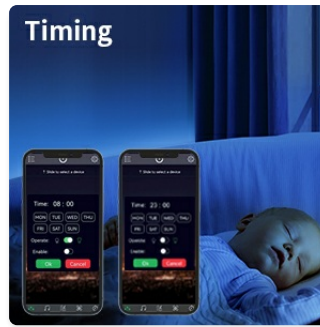
To ensure safe operation and prevent damage, please observe the following:

- Ensure the power supply voltage matches the product's requirements.
- Do not immerse the LED strip or power adapter in water or expose to excessive moisture. This product is designed for indoor use only.
- Avoid bending the LED strip sharply at angles less than 90 degrees to prevent damage to the circuit board.
- Do not connect the LED strip to the power supply while it is still rolled up, as this may cause overheating.
- Keep out of reach of children.
- Do not attempt to repair or modify the product yourself. Contact qualified personnel for service.
- Always unplug the power adapter before cleaning or performing any maintenance.

SETUP & INSTALLATION

Follow these steps for proper installation of your LED strip:

1. **Prepare the Surface:** Choose a clean, dry, and smooth surface for installation. Dust, oil, or moisture can reduce the adhesive's effectiveness. Clean the surface thoroughly before proceeding.
2. **Plan the Layout:** Unroll the LED strip and plan your desired layout. Ensure the strip reaches the power outlet without excessive tension.
3. **Cutting the Strip (Optional):** If you need to shorten the strip, cut only along the designated cut marks (usually indicated by a scissor icon or copper pads). Cutting elsewhere will damage the circuit.
4. **Applying the Strip:** Peel off the protective backing from the adhesive tape on the back of the LED strip. Carefully press the strip onto the prepared surface, applying firm and even pressure.



Images: Illustrations for cutting and bending the LED strip during installation.

5. **Connect Power:** Connect the LED strip to the controller box, and then connect the power adapter to the controller box. Finally, plug the power adapter into a suitable electrical outlet.

OPERATING INSTRUCTIONS

A. Using the Remote Control

The included IR remote control allows for basic functions:

- **ON/OFF:** Power the LED strip on or off.
- **Color Selection:** Choose from a variety of preset static colors.
- **Brightness Adjustment:** Increase or decrease the light intensity.
- **Mode Selection:** Cycle through dynamic modes like flashing, jumping, or fading.
- **Speed Control:** Adjust the speed of dynamic lighting effects.

B. Using the Bluetooth App

For advanced control and customization, download the compatible Bluetooth app (refer to the packaging or quick start guide for app name/QR code). Once installed:

1. **Enable Bluetooth:** Ensure Bluetooth is enabled on your smartphone.
2. **Open App:** Launch the LED control app. It should automatically detect and connect to your KSIPZE LED strip.
3. **Explore Functions:** The app provides comprehensive control, including:
 - **Color Wheel:** Select from millions of colors.
 - **Brightness Slider:** Fine-tune brightness levels.
 - **Custom Modes:** Create and save your own lighting effects.
 - **Music Sync Mode:** Activate the music synchronization feature.
 - **Timer Settings:** Program on/off schedules.

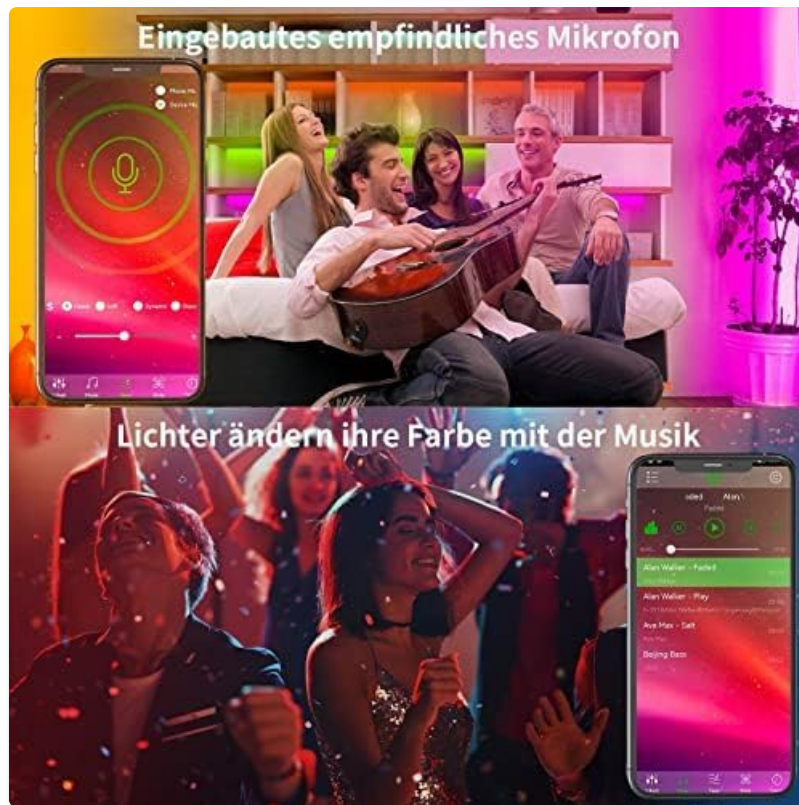


Image: Dual control options via smartphone app and IR remote control.

C. Music Synchronization Mode

The built-in microphone allows the LED strip to react to sound:

1. **Activate:** Select the music sync mode within the app or on the remote control (if available).
2. **Play Music:** Play music near the controller box. The lights will change color and pattern according to the rhythm and volume of the sound.



Image: The LED strip lights changing color with music, controlled via app.

D. Timer Mode

Set automated schedules for your LED strip:

1. **Access Timer Settings:** Open the app and navigate to the timer or schedule section.
2. **Set ON/OFF Times:** Configure desired times for the LED strip to turn on and off. You can also select specific days of the week for these schedules to repeat.
3. **Save Settings:** Confirm and save your timer settings. The LED strip will now operate according to your programmed schedule.



Image: App interface for setting timed on/off schedules for the LED strip.

MAINTENANCE

Proper maintenance ensures the longevity and performance of your LED strip:

- **Cleaning:** Disconnect the power before cleaning. Use a soft, dry cloth to gently wipe the LED strip and controller. Do not use harsh chemicals or abrasive cleaners.
- **Storage:** If storing the LED strip for an extended period, ensure it is clean and dry. Roll it loosely to avoid damaging the circuit. Store in a cool, dry place away from direct sunlight.
- **Adhesive Care:** Avoid frequently repositioning the strip, as this can weaken the adhesive.

TROUBLESHOOTING

If you encounter issues with your KSIPZE RGB LED Strip, refer to the following common problems and solutions:

Problem	Possible Cause	Solution
LED strip does not light up.	No power, loose connection, faulty power adapter.	Check if the power adapter is securely plugged in. Ensure all connections between the strip, controller, and adapter are firm. Try a different power outlet.

Problem	Possible Cause	Solution
Remote control not working.	Battery depleted, remote out of range, IR sensor blocked.	Replace the remote control battery. Ensure the remote is pointed directly at the IR receiver on the controller box within range. Remove any obstructions.
Bluetooth app cannot connect.	Bluetooth off, app not updated, multiple devices connected.	Ensure Bluetooth is enabled on your phone. Restart the app and your phone. Disconnect other Bluetooth devices. Ensure the LED strip is powered on.
Colors are incorrect or inconsistent.	Damaged LED segment, incorrect app/remote setting.	Check for physical damage on the strip. Reset the color settings in the app or remote. If a segment is permanently damaged, it may require replacement.
Music sync not working.	Microphone blocked, music too quiet, mode not activated.	Ensure the controller box's microphone is not covered. Increase music volume. Verify music sync mode is active in the app.

SPECIFICATIONS

Technical details for the KSIPZE RGB LED Strip Light:

- **Brand:** KSIPZE
- **Model Number:** ST51
- **Length:** 30 meters
- **Color:** RGB (Multicolor)
- **Light Source Type:** LED
- **Power Source:** Electric Cable
- **Control Methods:** Bluetooth App, IR Remote Control
- **Special Features:** Color Changing, Dimmable, Music Sync, Timer Function, Energy Efficient
- **Indoor/Outdoor Use:** Indoor
- **Item Weight:** 300 g
- **Package Dimensions:** 24.9 x 22.2 x 1.9 cm
- **Style:** Modern

Ficha de información del producto			
REGLAMENTO DELEGADO (UE) 2019/2015 DE LA COMISIÓN en lo relativo al etiquetado energético de las fuentes luminosas			
Nombre o marca comercial del proveedor: Shenzhen Yunhuaxin Keji Youxiangongsi			
Dirección del proveedor: Ibertrust Global S.L., CL. PABLO IGLESIAS, 1Postal Castello de la plana, 12003, ES			
Identificador del modelo: ST51_K2430			
Tipo de fuente luminosa:			
Tecnología de iluminación utilizada:	LED	No direccional o direccional:	NDLS
Tipo de casquillo de la fuente luminosa (u otra interfaz eléctrica)	LED		
De red o no de red:	MLS	Fuente luminosa conectada (CLS):	No
Fuente luminosa de color variable:	No	Envolverte:	-
Fuente luminosa de alta luminancia:	No		
Protección antideslumbramiento:	No	Atenuable:	SI
Parámetros del producto			
Parámetro	Valor	Parámetro	Valor
Parámetros generales del producto:			
Consumo de energía en modo encendido (kWh / 1 000 h), redondeado al entero más próximo	12	Clase de eficiencia energética	F
Flujo luminoso útil (ϕuse), indicando si se refiere al flujo en una esfera (360°), en un cono amplio (120°) o en un cono estrecho (90°)	1 080 en Esfera (360°)	Temperatura de color correlacionada, redondeada a los 100 K más próximos, o intervalo de temperaturas de color	3 000

		surrendimientos, redondeado a los 100 K más próximos, que puede regularse	
Potencia en modo encendido ($P_{encendido}$), expresada en W	12,0	Potencia en modo de espera (P_{de}), expresada en W y redondeada al segundo decimal	0,00
Potencia en modo de espera en red (P_{red}) para CLS, expresada en W y redondeada al segundo decimal	-	Índice de rendimiento de color, redondeado al entero más próximo, o intervalo de valores CRI que puede regularse	81
Dimensiones exteriores sin mecanismo de control independiente, piezas de control de la iluminación ni piezas ajenas a la iluminación, de haberlos (milímetros)		Altura	207
		Anchura	237
		Profundidad	16
Distribución espectral de la potencia en el intervalo de 250 nm a 800 nm, a plena carga		Véase la imagen en la última página	
Declaración de potencia equivalente ⁽¹⁾		En caso afirmativo, potencia equivalente (W)	
		Coordenadas cromáticas (x e y)	
		0,469 0,409	
Parámetros de fuentes luminosas de LED y OLED:			
Valor del índice de rendimiento de color R9	11	Factor de supervivencia	1,00
Factor de mantenimiento del flujo luminoso	0,98		
Parámetros de fuentes luminosas de red de LED y OLED:			
Factor de desplazamiento ($\cos \phi_1$)	1,00	Consistencia cromática en elípses de MacAdam	4
Declaración de que una fuente luminosa de LED sustituye a una fuente luminosa fluorescente sin balasto integrado de un determinado varaje.	- ⁽²⁾	En caso afirmativo, declaración de sustitución (W)	-
Unidad de medida del parpadeo (Pst LM)	0,5	Unidad de medida del efecto estroboscópico (SVM)	0,0

(1): no aplicable;
(2): no aplicable.

Página 1 / 3

Página 2 / 3

Página 3 / 3

Image: EU Energy Label for the product, indicating energy efficiency class F. For more details, visit [EPREL Database](#).

WARRANTY AND SUPPORT

Information regarding specific warranty details and software updates for this product is currently unavailable. For any issues not covered in this manual or for further assistance, please refer to the seller or retailer from whom you purchased the product.

WIDE APPLICATION

The KSIPZE RGB LED Strip Light is versatile and suitable for various indoor decorative purposes,

enhancing the ambiance of different spaces and occasions:

- **Home Decor:** Ideal for bedrooms, living rooms, kitchens (under cabinets), hallways, and staircases.
- **Furniture Accent:** Perfect for backlighting TVs, beds, shelves, and desks.
- **Special Occasions:** Popular for creating festive atmospheres during holidays like Christmas, New Year, Easter, Halloween, and for celebrations such as birthdays and weddings.

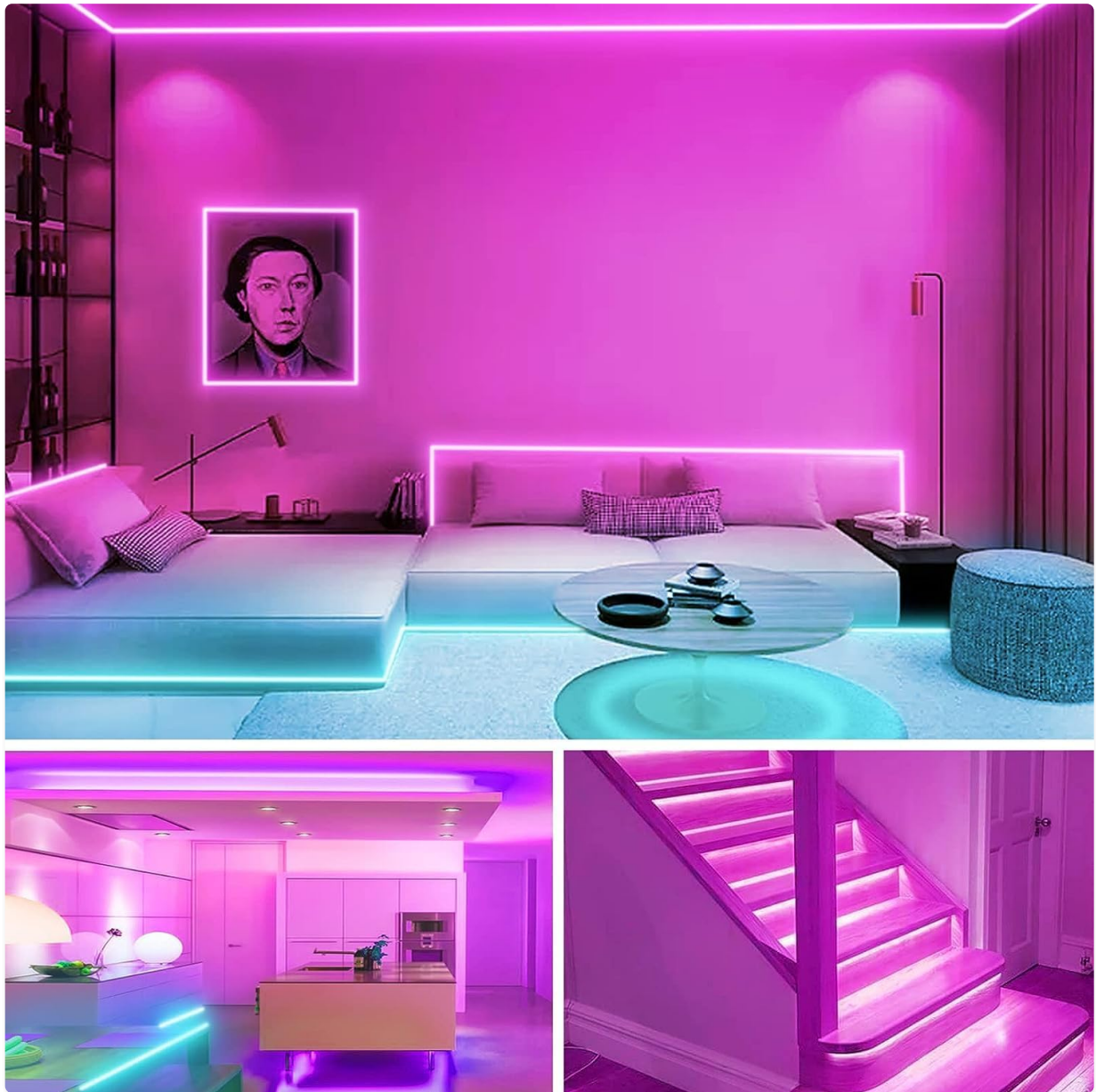


Image: Examples of the LED strip used for home decoration in various settings.