

PEMP PP-9513

PEMP 10.25-inch Linux Screen User Manual

FOR BMW 3 SERIES F30, X1 F48 (2017-2019 EVO ID6) MODEL: PP-9513

1. Introduction

This manual provides detailed instructions for the installation, setup, operation, and troubleshooting of your PEMP 10.25-inch Linux Screen. This advanced infotainment system is designed for specific BMW models, including the 3 Series F30 and X1 F48 from 2017-2019 with EVO ID6 systems. It supports wireless CarPlay and Android Auto, allowing for seamless integration with your smartphone for calls, music, and navigation using your vehicle's OEM Bluetooth functionality.

2. Safety Information

Always prioritize safety during installation and operation. Ensure the vehicle is turned off and the battery is disconnected before beginning installation. Consult a professional if you are unsure about any steps. Do not attempt to operate the device in a way that distracts you from driving. Adhere to all local traffic laws and regulations.

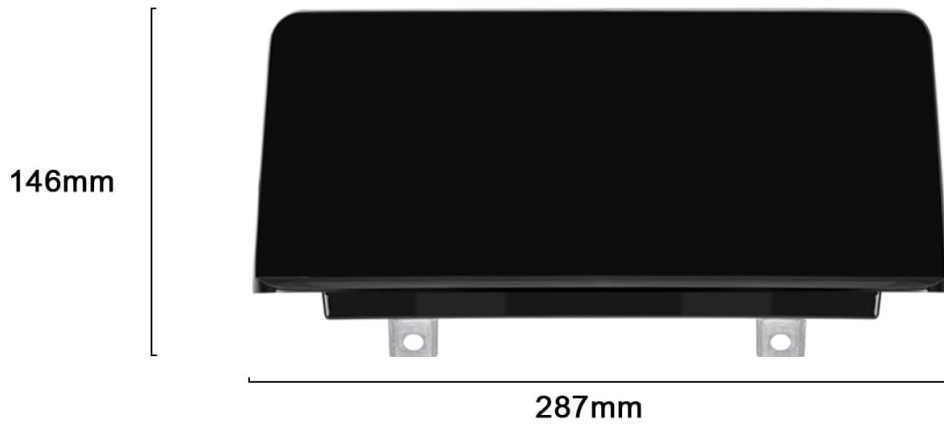
3. Package Contents

Verify that all components are present in your package:

- 1 x PEMP 10.25-inch Linux Screen
- 1 x ISO Wiring Harness
- 1 x USB Cable
- 1 x Installation Manual (this document)

DIMENSIONS AND ACCESSORIES

DIMENSIONS



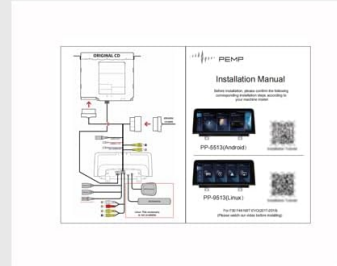
ACCESSORIES



1 × ISO Wiring Harness



1 × USB Cable



1 × Installation Manual

Figure 3.1: Included accessories with the PEMP 10.25-inch Linux Screen.

4. Product Overview

The PEMP 10.25-inch Linux Screen offers a high-definition display and integrates seamlessly with your BMW's existing system, providing enhanced functionality without losing original features.



Figure 4.1: Main interface of the PEMP 10.25-inch Linux Screen.



Figure 4.2: Visual comparison of the original screen versus the upgraded PEMP Linux Screen.

Key Features:

- **HD Screen:** 1920*720 HD Display with Capacitive Touch Function.
- **Wireless & Wired CarPlay/Android Auto:** Supports both wireless and wired connections for smartphone integration.
- **OEM Bluetooth Support:** Utilize your original Bluetooth for calls and music, ensuring high-quality sound and no echo.
- **OEM Interface Integration:** Long press the Menu button to switch between the factory OEM interface and the CarPlay/Android Auto interface. Supports steering wheel button functions.
- **Camera Support:** Compatible with OEM cameras and aftermarket cameras (720P or less). Provides clear reversing picture.
- **Quick Boot:** Linux System provides fast access to CarPlay/Android Auto and quick display of reverse camera video (within 2 seconds).

Built-in Carplay and Android Auto

Supports wireless/wired apple carplay and Android Auto, No need to purchase additional Carplay/Android Auto Adapter



Figure 4.3: Wireless CarPlay and Android Auto functionality.

**You can switch between
OEM info and the new system.**



Figure 4.4: Switching between OEM and new system interfaces.

5. Installation

Careful installation is crucial for optimal performance. Ensure your vehicle is compatible before proceeding.

5.1 Compatibility Check

This product is not suitable for cars with 6PIN CIC system and 6PIN NBT system. The 2017 model year is a transition phase; some models may have the NBT system, which is incompatible. Always verify your original system's LVDS connection socket.

PLEASE NOTE:

Please check the **LVDS** connection socket on the back of the OEM display and which type of **OEM display interface**.



OEM DISPLAY INTERFACE:

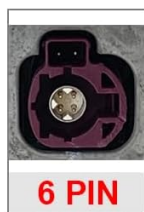


Figure 5.1: LVDS connection types and compatibility.

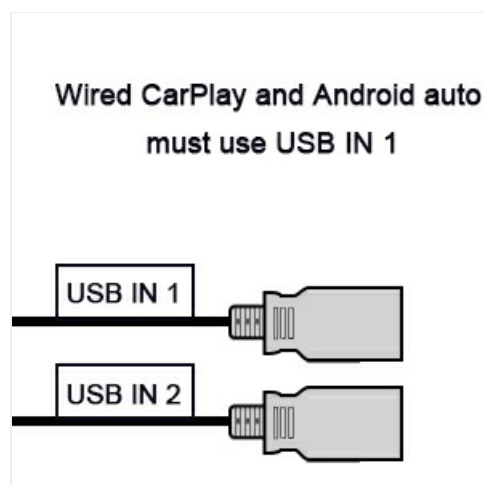


Figure 5.2: Visual guide for identifying OEM display interface types.

5.2 Wiring and Connections

Ensure all wiring is securely connected. If your OEM system uses a fiber optic cable, it must be adapted to the PEMP ISO harness.

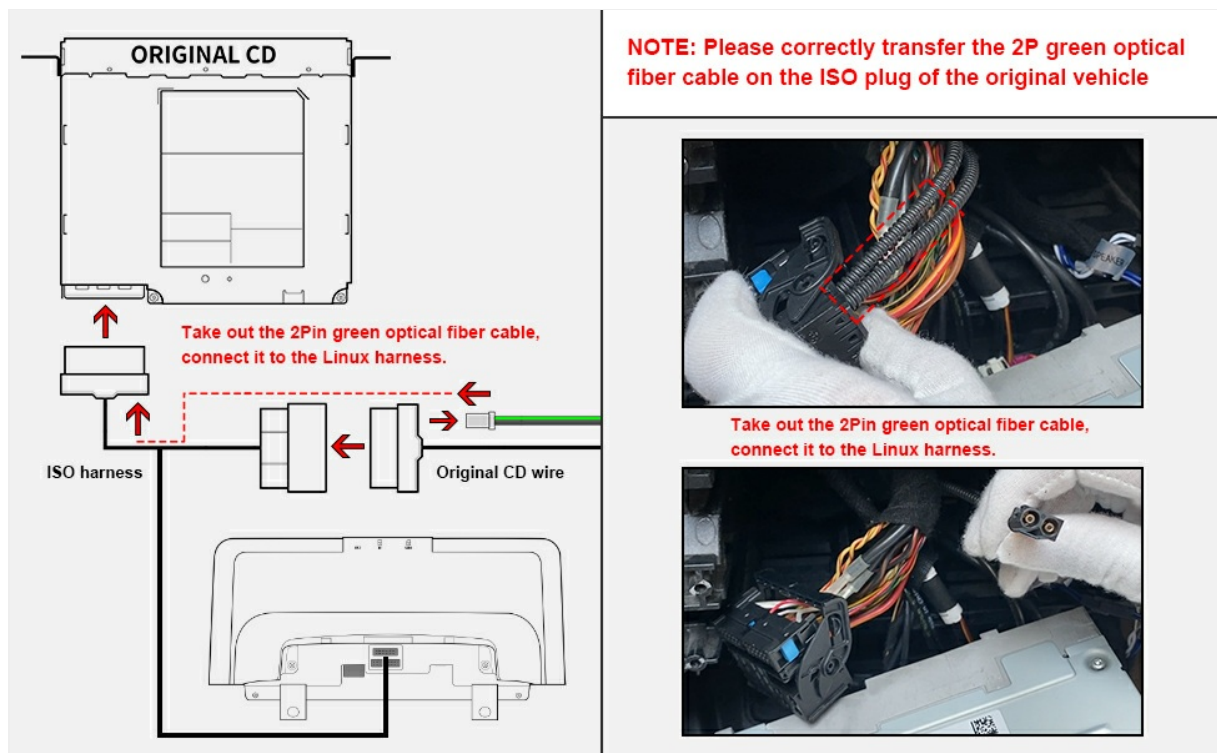


Figure 5.3: Fiber optic cable connection diagram.

For wired CarPlay and Android Auto, use the USB IN 1 port.



Figure 5.4: USB port usage for wired connections.

5.3 Camera Installation

The system supports both OEM and aftermarket front/rear view cameras (720P or less).

Support for OEM and aftermarket front and rear view cameras

You can select the camera option in the settings
the after-market camera only
support CVBS or 720P AHD format

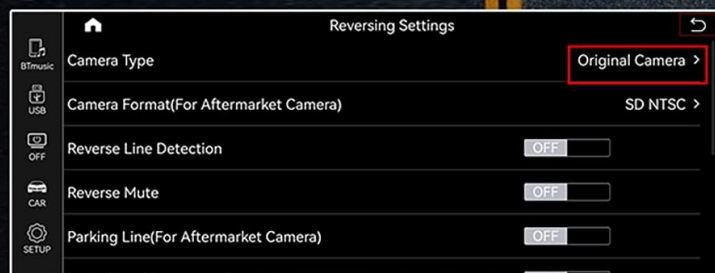


Figure 5.5: Camera connection and settings.

6. Setup

6.1 Initial Bluetooth Connection

To ensure proper sound and call functionality, connect your phone to the original OEM Bluetooth first.

Video 6.1: Instructions on how to use OEM Bluetooth for calls in CarPlay.

6.2 Screen Resolution Settings

If the display appears distorted or incorrect, adjust the screen resolution in the settings.



Figure 6.1: Adjusting original car's screen resolution.

6.3 Camera Type Selection

Configure the camera type (OEM or aftermarket) in the reversing settings.



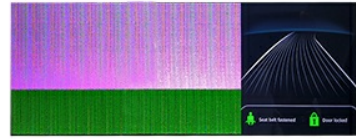
Figure 6.2: Selecting camera type in settings.

7. Operating Instructions

7.1 CarPlay and Android Auto

The system supports both wireless and wired CarPlay and Android Auto. Once connected, you can access navigation, music, calls, and other apps directly from the screen.

Why can't get OEM car info and Sound?



Please press the FM/AM button to confirm whether the OEM radio has sound?

A: If the OEM radio has sound, you need to set the resolution, the setting path is: Setup>Car Settings>Original Car's Screen Resolution> Select the item

B: If there is no sound from the OEM radio, you will need to reconnect the socket on the back of the OEM radio, Refer to the picture on the right.

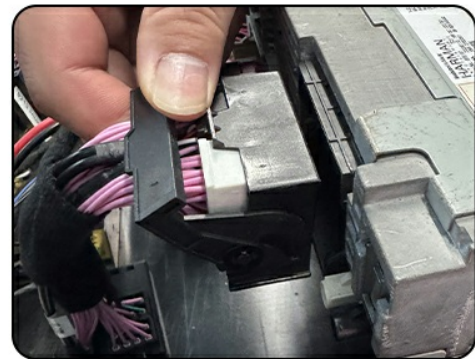


Figure 7.1: CarPlay interface.



Figure 7.2: Android Auto interface.

Video 7.1: Step-by-step guide on how to connect Apple CarPlay.

7.2 OEM Bluetooth for Calls and Music

The system is designed to support your vehicle's original Bluetooth for superior call quality and music

playback.

Figure 7.3: OEM Bluetooth support.

8. Maintenance

To maintain the longevity and performance of your PEMP Linux Screen, regularly clean the screen with a soft, lint-free cloth. Avoid using harsh chemicals or abrasive materials. Ensure all connections remain secure. Keep the device away from extreme temperatures and direct sunlight for prolonged periods.

9. Troubleshooting

This section addresses common issues you might encounter.

9.1 No Sound Issue

If you experience no sound from the screen, follow these steps:

1. Check if the OEM radio has sound by pressing the FM/AM button.
2. If the OEM radio has sound, navigate to Settings > Car Settings > Original Car's Screen Resolution and select the appropriate resolution.
3. If there is no sound from the OEM radio, reconnect the socket on the back of the OEM radio.
4. Ensure the AUX harness is correctly connected.

Video 9.1: Detailed instructions on how to fix the no sound issue.

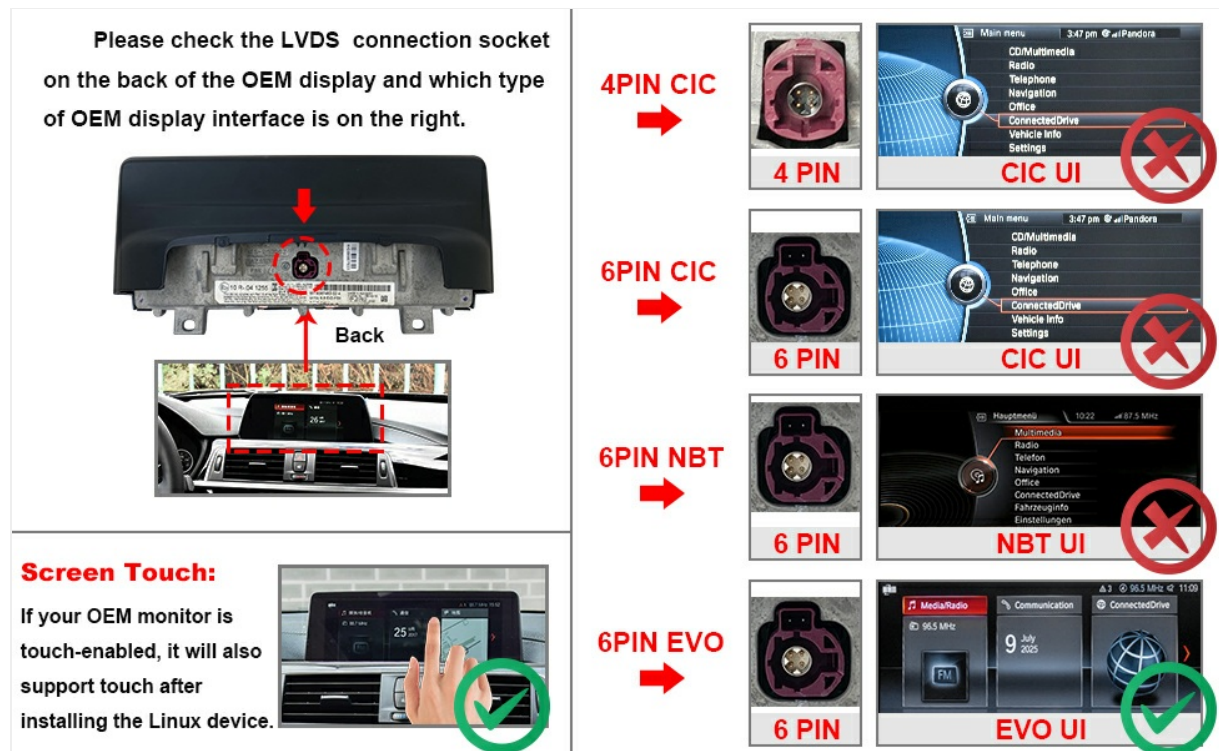


Figure 9.1: Troubleshooting guide for no sound and OEM info issues.

9.2 OEM Resolution Issues / Splash Screen

If the screen displays a splash screen or has resolution problems, adjust the screen resolution in the settings. If the issue persists after setting, press the FM/AM button. If there is still no sound from the radio, contact customer service.

9.3 USBAUX Box Connection (Optional)

If you need Airplay and USB flash drive sound, a separately purchased USBAUX box and AUX cable are required.

How to connect USBAUX box? (The USBAUX box and AUX cable need to be purchased separately.)

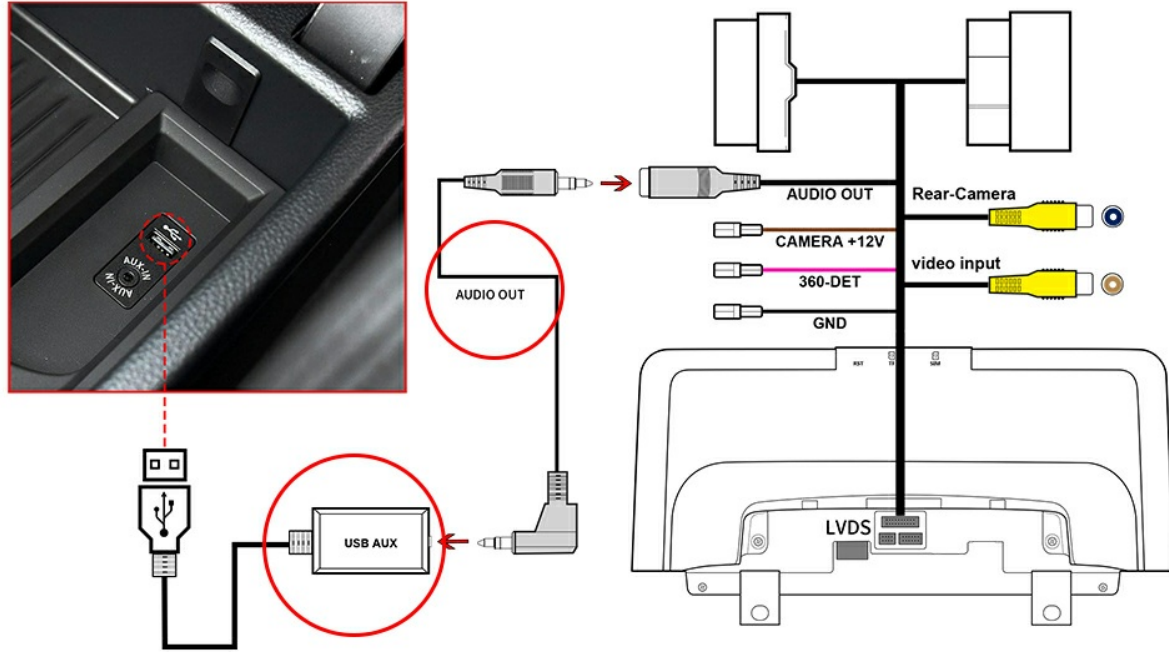


Figure 9.2: USBAUX box connection diagram.

10. Specifications

| | |
|--------------------------------|--|
| Product Dimensions | 12.2 x 1.97 x 5.12 inches |
| Item Weight | 5.28 pounds (2.4 Kilograms) |
| Model Number | PP-9513 |
| ASIN | B0D5J4CS84 |
| Brand | PEMP |
| Connectivity Technology | Bluetooth |
| Controller Type | Touch Screen |
| Special Features | Android Auto, Apple CarPlay, Built-In Bluetooth, Touchscreen |
| Compatible Devices | iPhone, Android Phone |
| Total HDMI Ports | 1 |
| Connector Type | HDMI, RCA |
| Audio Output Mode | Stereo |
| Video Encoding | H.264, H.265/HEVC, MPEG-4 |

11. Warranty and Support

For warranty information and technical support, please refer to the documentation included with your purchase or contact PEMP customer service directly. Keep your proof of purchase for any warranty claims.