

ROSESELSA EI5

ROSESELSA Earfree i5 Wireless Earbuds User Manual

Model: EI5



1. INTRODUCTION

Welcome to the user manual for your ROSESELSA Earfree i5 Wireless Earbuds. These earbuds are designed to provide a high-quality audio experience with advanced features such as Hybrid Active Noise Cancellation (ANC), HiFi sound, extended battery life, and a low-latency game mode. Please read this manual carefully to ensure proper use and maintenance of your device.

2. PACKAGE CONTENTS

Verify that all items are present in your package:

- ROSESELSA Earfree i5 Wireless Earbuds (Left and Right)
- Charging Case
- USB-C Charging Cable
- Multiple Sizes of Eartips (Small, Medium, Large)
- User Manual

3. PRODUCT OVERVIEW

Familiarize yourself with the components of your Earfree i5 earbuds and charging case.



Image: ROSESELSA Earfree i5 wireless earbuds in their champagne gold charging case, showcasing the earbuds seated within the open case.

Earbud Components:

- Touch Control Area
- Microphone (4 per earbud)
- Eartip
- Charging Contacts

Charging Case Components:

- Earbud Charging Slots
- USB-C Charging Port
- LED Indicator Light

4. SETUP

4.1 Initial Charging

Before first use, fully charge the earbuds and the charging case.

1. Place both earbuds into the charging case.
2. Connect the USB-C charging cable to the charging port on the case and to a power source.
3. The LED indicator on the case will show charging status. A full charge for the case provides approximately 50 hours of total playtime, with earbuds offering up to 10 hours on a single charge. A 10-minute charge can provide up to 12 hours of playback.

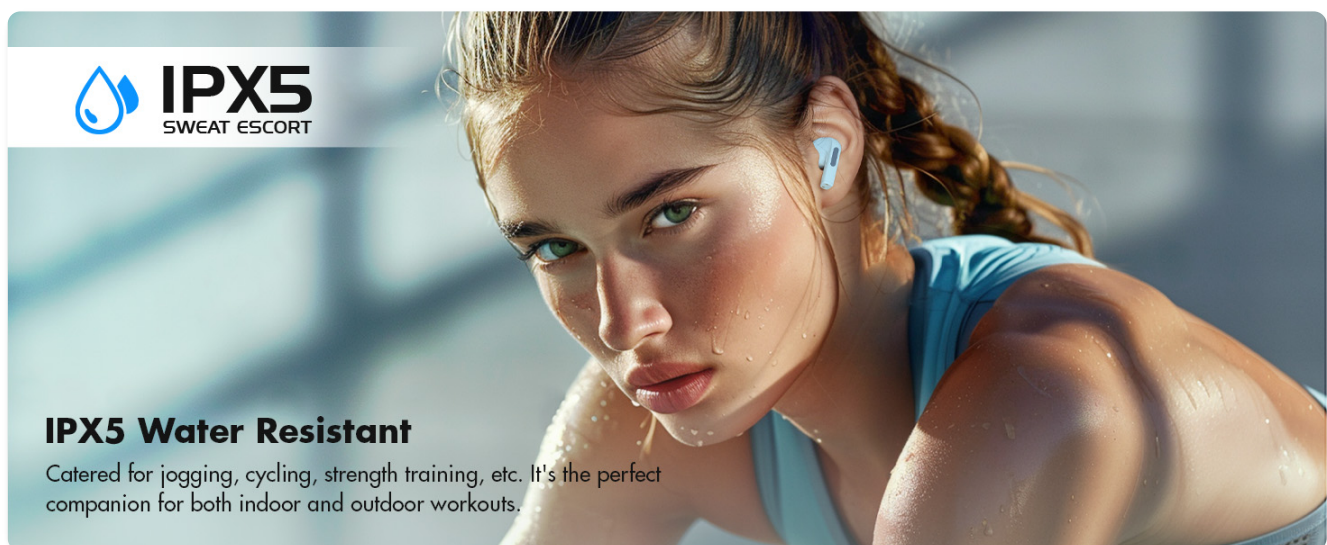


Image: A USB-C cable being plugged into the Earfree i5 charging case, illustrating the charging process.

4.2 Bluetooth Pairing

To connect your Earfree i5 earbuds to a device:

1. Ensure the earbuds are charged and inside the charging case.
2. Open the charging case. The earbuds will automatically enter pairing mode (LED indicator will flash).
3. On your device (smartphone, laptop, etc.), enable Bluetooth and search for new devices.
4. Select "Earfree i5" from the list of available devices.
5. Once connected, the LED indicator on the case will stop flashing or change color (refer to specific LED behavior in the full manual if available).

The Earfree i5 supports Bluetooth 5.3 for a stable connection up to 10 meters.

5. OPERATING INSTRUCTIONS

5.1 Touch Controls

The Earfree i5 earbuds feature touch-sensitive controls on each earbud. Specific functions can often be customized via the companion app.

- **Play/Pause:** Single tap on either earbud.
- **Next Track:** Double tap on the right earbud.
- **Previous Track:** Double tap on the left earbud.
- **Answer/End Call:** Single tap on either earbud.
- **Reject Call:** Press and hold on either earbud.
- **Activate Voice Assistant:** Triple tap on either earbud (customizable).
- **Switch ANC Modes:** Press and hold on either earbud (cycles through ANC On, Transparency Mode, ANC Off).

5.2 Active Noise Cancellation (ANC) and Transparency Mode

The Earfree i5 features Hybrid ANC technology, capable of reducing noise by up to 48dB across a 4000Hz width, providing an undisturbed listening experience. Transparency Mode allows you to hear your surroundings without removing the earbuds.



Image: Diagram illustrating the noise reduction capability of the Earfree i5 earbuds, showing a reduction of up to 98.9% with 48dB depth and 4000Hz width.

5.3 Game Mode

Activate Game Mode for ultra-low latency audio, reducing audio delay to 54ms. This is beneficial for gaming where audio synchronization is critical.

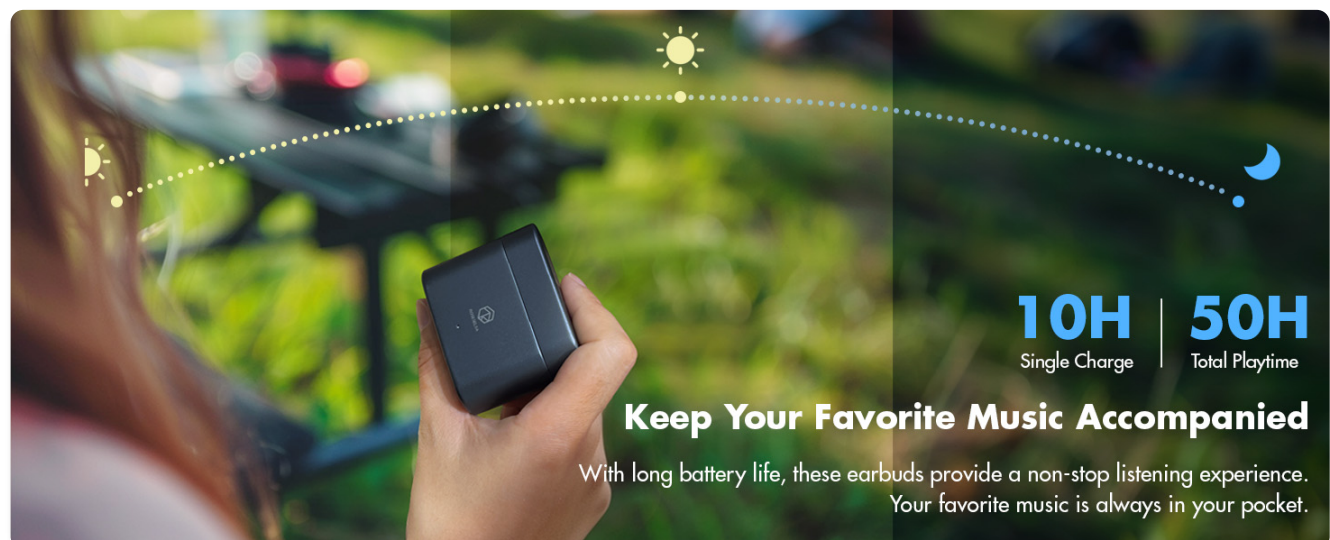


Image: Image depicting gamers with text '54ms Imperceptible Latency', illustrating the low-latency game mode feature.

5.4 Roselink App

Download the "Roselink" app for enhanced control and customization options, including:

- Customizable touch controls
- Equalizer (EQ) presets
- Firmware updates
- Battery status display
- Dual-device connectivity management

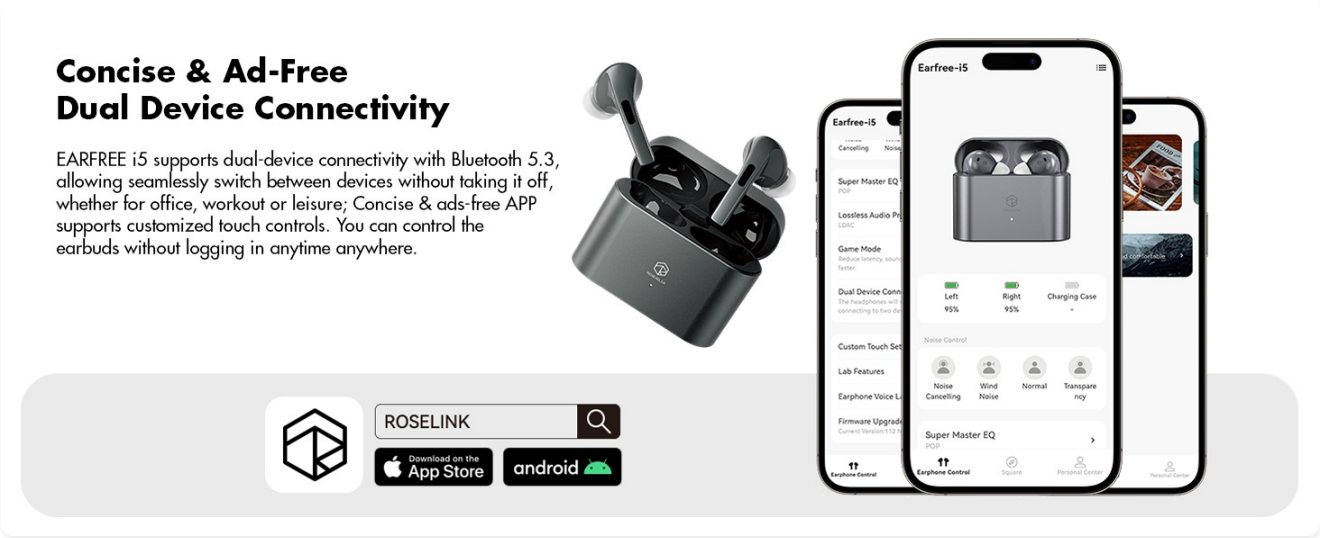


Image: Screenshot of the 'Roselink' app interface on a smartphone, showing various control and customization options for the Earfree i5 earbuds.

6. KEY FEATURES

6.1 High-Fidelity Audio Experience

The Earfree i5 is equipped with HiFi 5 DSP and new-generation decoder and amplifier modules. The HR2 Technology Planck Unit and Topology Diaphragm enhance unit efficiency and sound quality, supporting LDAC codec for a rich listening experience.

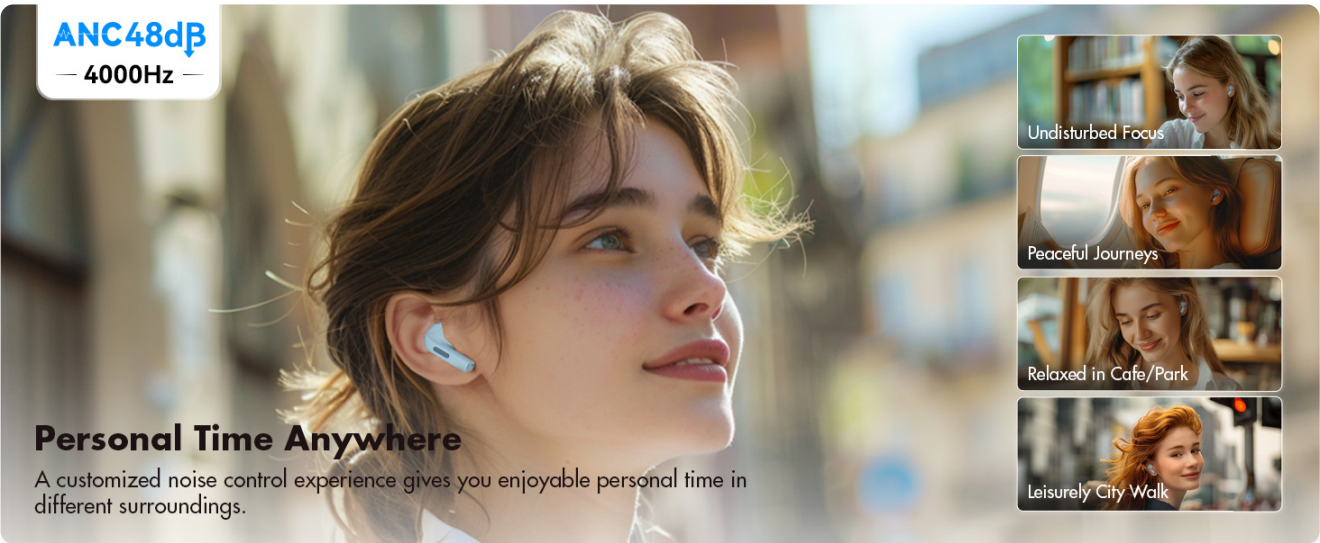


Image: Two Earfree i5 earbuds with sound waves, highlighting 'High Fidelity Audio Experience' and mentioning HR2 topologic diaphragm, HiFi 5 DSP, and LDAC codec support.

6.2 Superior Clear Call Quality

Featuring GoerTek Silicon Crystal 4 Microphones and a DNN deep neural network algorithm, the earbuds effectively reduce environmental noise, ensuring clear and natural voice clarity during calls.

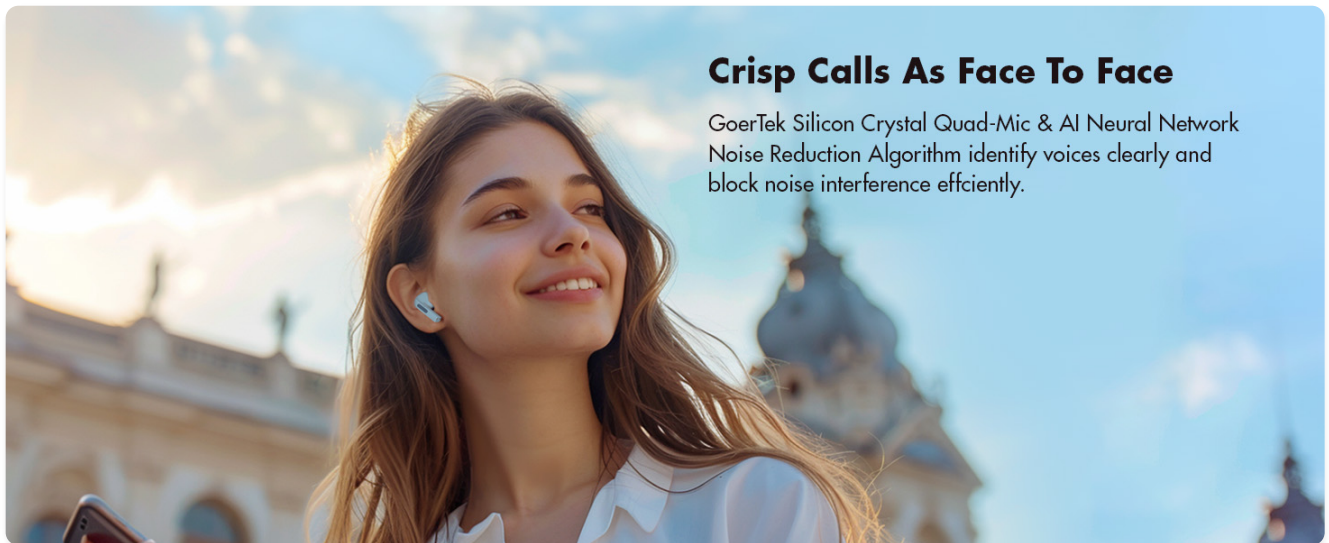


Image: A person smiling while wearing an Earfree i5 earbud, with text 'GoerTek HD Mics for Clear Calls', illustrating the advanced microphone technology for clear communication.

6.3 IPX5 Water Resistance

The Earfree i5 earbuds are IPX5 rated, making them resistant to sweat and light splashes. This makes them suitable for workouts and outdoor activities.



Stable Multipoint Connection

EARFREE i5 offers a stable and fast connection and supports you to switch in different scenarios, such as working, studying, commuting, playing games, etc.

Image: A woman exercising on a stationary bike while wearing Earfree i5 earbuds, demonstrating their IPX5 water resistance for workouts.

6.4 Ergonomic Design and Premium Build

Designed for comfort, each earbud weighs only 4.2g. The charging case is crafted from aviation-grade aluminum alloy, processed with precision CNC, polishing, sandblasting, and anodizing for durability and a premium feel.

7. MAINTENANCE

To ensure the longevity and optimal performance of your Earfree i5 earbuds:

- **Cleaning:** Regularly clean the earbuds, eartips, and charging contacts with a soft, dry, lint-free cloth. Do not

use harsh chemicals or abrasive materials.

- **Eartips:** Remove and clean eartips periodically. Ensure they are completely dry before reattaching.
- **Storage:** When not in use, store the earbuds in their charging case to protect them and keep them charged.
- **Avoid Extreme Conditions:** Do not expose the earbuds or case to extreme temperatures, humidity, or direct sunlight for extended periods.

8. TROUBLESHOOTING

If you encounter issues with your Earfree i5 earbuds, try the following solutions:

8.1 Earbuds Not Pairing/Connecting

- Ensure earbuds are charged and in pairing mode (open case).
- Turn off and on Bluetooth on your device.
- Forget "Earfree i5" from your device's Bluetooth list and try pairing again.
- Restart your device.

8.2 No Sound or Low Volume

- Check the volume level on both your device and the earbuds.
- Ensure earbuds are properly seated in your ears.
- Clean any debris from the earbud nozzles.
- Try a different audio source or application.

8.3 Charging Issues

- Ensure the charging cable is securely connected to both the case and the power source.
- Verify the power source is active.
- Clean the charging contacts on both the earbuds and the case.
- Try a different USB-C cable or power adapter.

8.4 ANC Not Working Effectively

- Ensure ANC mode is activated (press and hold touch control).
- Adjust the fit of the earbuds in your ears to ensure a proper seal. Try different eartip sizes.
- Ensure the microphones are not obstructed.

9. SPECIFICATIONS

Model Name	EI5
Connectivity Technology	Wireless (Bluetooth 5.3)
Noise Control	Hybrid Noise Cancellation (48 dB)
Audio Driver Type	Dynamic Driver (12 mm)
Frequency Range	20 Hz - 20,000 Hz
Impedance	32 Ohm

Battery Life (Earbuds)	Up to 10 Hours
Total Playtime (with Case)	Up to 50 Hours
Charging Case Capacity	500 mAh
Audio Latency (Game Mode)	54 Milliseconds
Water Resistance Level	IPX5 (Moisture Resistant)
Earbud Weight	4.2g (single earbud)
Charging Case Material	Metal (Aviation-grade aluminum alloy)
Control Type	Touch Control, App Control

10. SAFETY INFORMATION

- Do not disassemble or modify the product.
- Keep out of reach of children and pets.
- Avoid prolonged exposure to high volume levels to prevent hearing damage.
- Do not use the earbuds in situations where inability to hear surroundings could be dangerous (e.g., driving, cycling, walking in traffic).
- Dispose of the product and batteries responsibly according to local regulations.

11. WARRANTY AND SUPPORT

For warranty information, technical support, or customer service inquiries, please refer to the official ROSESELSA website or contact the retailer where you purchased the product. Keep your proof of purchase for warranty claims.

