

manuals.plus /

› [ROBOTIME](#) /

› [ROBOTIME Clear Acrylic Display Case DF03L Instruction Manual](#)

ROBOTIME DF03L

ROBOTIME Clear Acrylic Display Case

Model: DF03L

Brand: ROBOTIME

INTRODUCTION

This manual provides instructions for the assembly, use, and maintenance of your ROBOTIME Clear Acrylic Display Case, Model DF03L. This display case is designed to protect and showcase your valuable collectibles, miniature house kits, and other items from dust and damage.



Figure 1: ROBOTIME Clear Acrylic Display Case (DF03L) and its packaging.

IMPORTANT SAFETY INFORMATION

- **WARNING:** Not for children under 3 years due to small parts.
- Handle acrylic panels with care to prevent scratches.
- Ensure all panels are securely fitted during assembly to maintain structural integrity.

PACKAGE CONTENTS

Your ROBOTIME Clear Acrylic Display Case package includes the following components:

- Acrylic side panels (various sizes)
- Acrylic top panel
- White base panel
- Protective film on all acrylic panels (must be removed before assembly)

ASSEMBLY INSTRUCTIONS

The ROBOTIME Clear Acrylic Display Case features a seamless snap-fit design for quick and easy assembly, typically within 3 minutes. No tools are required.

Step 1: Prepare Panels

Carefully remove the double-sided protective film from all acrylic panels before beginning assembly. This ensures crystal-clear visibility.



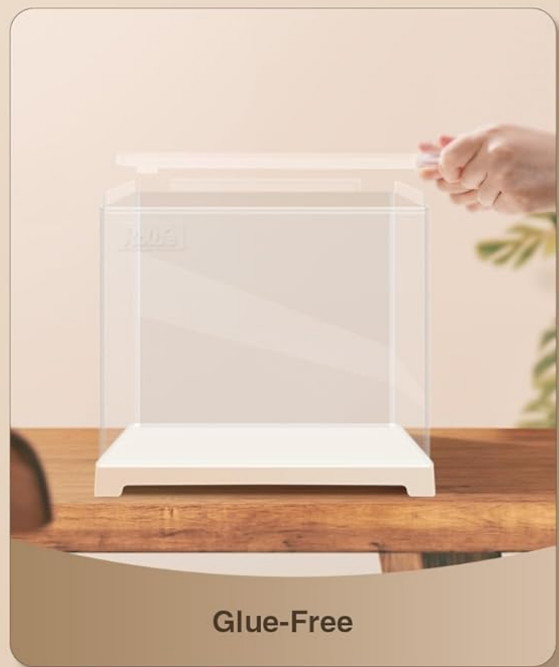
Double-sided Film Protection



Rounded Edge



Dustproof and Easy to Clean



Glue-Free

Figure 2: Protective film removal and panel features.

Step 2: Assemble Side Panels to Base

Place the white base panel flat. Insert the side acrylic panels into the grooves on the base, ensuring the grooves on the side panels face inwards. Secure them tightly by pressing down firmly.

Assembly Guidance

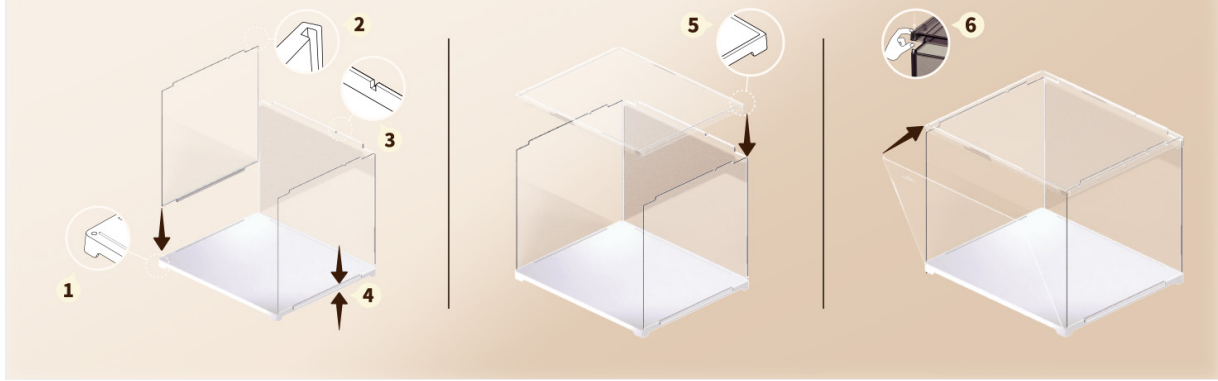


Figure 3: Visual guide for panel assembly.

Step 3: Attach Top Panel

Once all four side panels are in place, carefully align and place the top acrylic panel onto the assembled structure. Ensure it snaps securely into the grooves of the side panels.

3 Minute Assembly



Figure 4: Attaching the top panel.

Step 4: Front Door Installation

The display case features a front-facing door design. Tilt the front panel slightly to insert it into the top and bottom grooves, then gently push it into place. It should fit snugly.

Assembly Videos

For a visual guide on assembly, please refer to the following videos:

Video 1: Clear Acrylic Display Case Installation by Attelite. This video demonstrates the step-by-step process of assembling the acrylic panels and securing the front door.

Video 2: Detailed Installation Steps by 3cubic. A concise video illustrating the assembly of the display case panels.

Video 3: How to Install the Acrylic Display Case for Collectibles by XINISS. This video provides a clear demonstration of the assembly process for the display case.

Video 4: ROBOTIME Dustproof Display Box for Miniature House Kit DF03L. This video showcases the assembly and use of the specific DF03L model with a miniature house.

USAGE

The ROBOTIME Clear Acrylic Display Case is ideal for showcasing a variety of items while protecting them from dust.

- **Display Collectibles:** Perfect for miniature house kits (except Dora's Loft DG12), action figures, models, figurines, toys, and other memorabilia.
- **Dust Protection:** The enclosed design helps keep your items clean and free from dust accumulation.
- **Stackable Design:** Multiple display cases can be stacked securely to create a larger display unit, optimizing space and enhancing visual appeal. The classic dovetail structure supports up to 6KG.



Figure 5: Display case providing dust protection for a miniature house.



Figure 6: Stackable design with 6KG carrying capacity.



Figure 7: Front-facing door for easy access.

MAINTENANCE

To keep your display case in optimal condition:

- **Cleaning:** Wipe the acrylic surfaces with a soft, damp cloth. Avoid abrasive cleaners or harsh chemicals, as these can scratch or damage the acrylic.
- **Dusting:** Regularly dust the exterior with a microfiber cloth to maintain clarity.

SPECIFICATIONS

Feature	Detail
Brand	ROBOTIME
Model	DF03L
Product Dimensions	11.3"L x 9.3"W x 9.6"H (287 x 237 x 244 mm)
Internal Space	10.6"L x 8.7"W x 8.9"H (270 x 220 x 225 mm)
Material	Acrylic (Plastic)
Color	Transparent with White Base
Assembly Required	Yes
Approximate Assembly Time	3 Minutes
Item Weight	2.79 pounds
Carrying Capacity	Up to 6KG (when stacked)

TROUBLESHOOTING

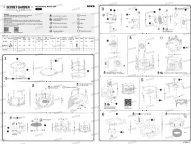
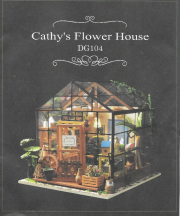


- **Panels not fitting:** Ensure the protective film has been completely removed from both sides of all panels. Verify that the grooves are correctly aligned and apply firm, even pressure during assembly.
- **Door not closing properly:** Check for any obstructions in the door's path or misalignment of the hinges. Ensure the top and bottom panels are fully seated.
- **Scratches on panels:** Minor scratches may occur if the protective film was not removed carefully or if

abrasive materials were used for cleaning. Always use a soft cloth for cleaning.

WARRANTY AND SUPPORT

For any questions, concerns, or support regarding your ROBOTIME Clear Acrylic Display Case, please contact ROBOTIME customer service through your retailer's support channels. Please retain your proof of purchase for warranty claims.

Related Documents - DF03L

	<p>ROKR AMK52 Secret Garden DIY Mechanical Music Box Assembly Instructions</p> <p>Comprehensive assembly instructions for the ROKR AMK52 Secret Garden DIY Mechanical Music Box by Robotime. This guide provides a detailed walkthrough of the assembly process, including a parts list, step-by-step instructions, and helpful tips for a successful build.</p>
	<p>Cathy's Flower House DG104: Miniature DIY Assembly Guide</p> <p>Comprehensive assembly instructions for the Cathy's Flower House DG104 miniature DIY craft kit by Robotime. This guide provides detailed steps, tips, and part lists to help you build your own charming flower house.</p>
	<p>Olivia's Kitchen Assembly Instructions - ROBOTIME WCF09</p> <p>Detailed assembly instructions for the ROBOTIME Olivia's Kitchen play set (Model WCF09). Includes parts list, step-by-step guidance, and safety warnings for building this wooden toy kitchen.</p>
	<p>Robotime EC Declaration of Conformity - Miniature House Kits</p> <p>Official EC Declaration of Conformity for Robotime Technology (Suzhou) Co., Ltd.'s range of DIY miniature house kits, including models like Mind-Find Bookstore, Holiday Party Time, and more, compliant with harmonized standards.</p>
	<p>ROKR Magic Cello Mechanical Music Box AMK63 - Assembly and Product Information</p> <p>Detailed information about the ROKR Magic Cello, a mechanical music box model AMK63. Includes product features, materials, manufacturer details, and assembly guidance.</p>