



Manuals.plus /

› WOSODA /

› WOSODA W300 Trail Camera User Manual

## WOSODA W300

# WOSODA W300 Trail Camera User Manual

Model: W300

## 1. INTRODUCTION

---

This manual provides detailed instructions for the setup, operation, and maintenance of your WOSODA W300 Trail Camera. Designed for outdoor use, this camera captures high-resolution photos and videos, making it ideal for wildlife monitoring, hunting, and security applications. Please read this manual thoroughly before using the camera to ensure optimal performance and longevity.

## 2. PACKAGE CONTENTS

---

Verify that all items listed below are included in your package. Note that this product is often sold as a 3-pack, so quantities may reflect that.



Figure 2.1: Included Accessories for the WOSODA W300 Trail Camera (3-pack shown).

- WOSODA W300 Trail Camera (3 units)
- 32GB SD Card (3 units)
- AA Batteries (24 units)
- Micro USB Cable (3 units)
- Mounting Belt (3 units)
- Wall Mount (3 units)
- Mounting Screws (set of 3)
- User Manual (1 unit)

### 3. CAMERA OVERVIEW

Familiarize yourself with the main components and features of your WOSODA W300 Trail Camera.

# Trail camera details

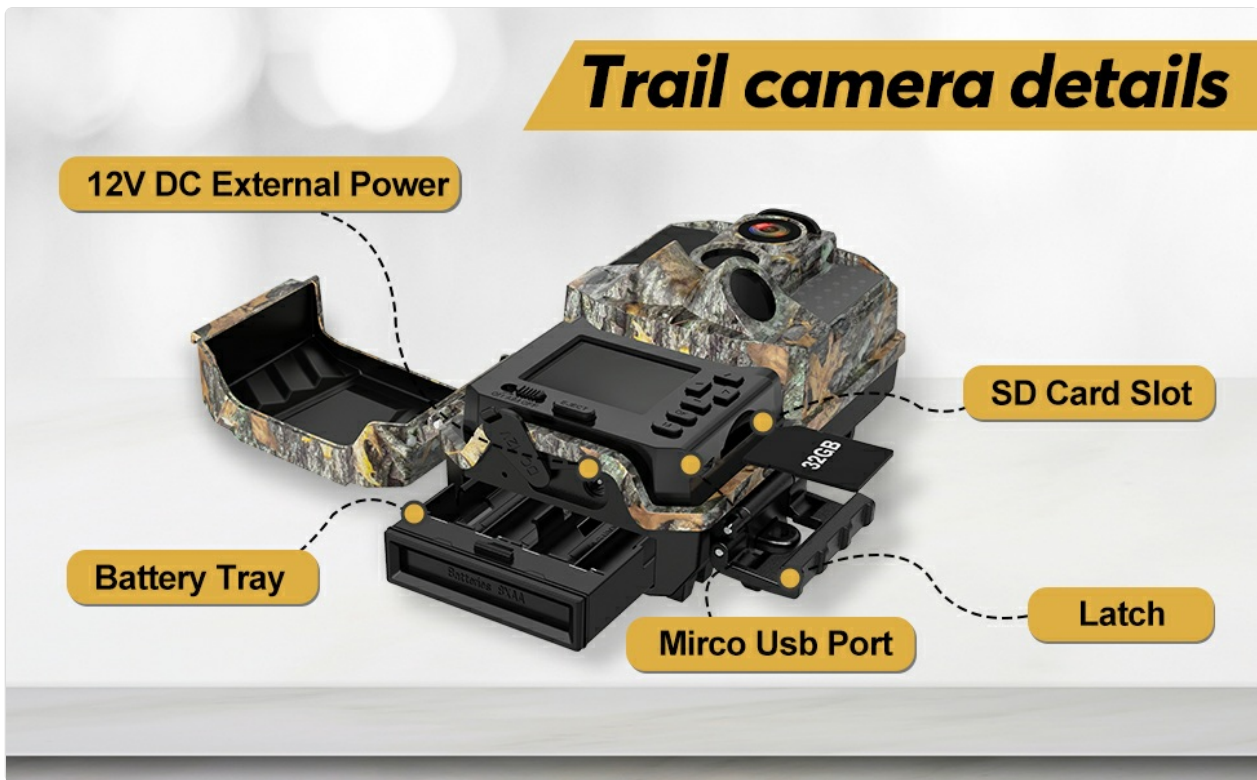


Figure 3.1: WOSODA W300 Trail Camera Components.

- **Lens:** Captures images and videos.
- **PIR Sensor:** Passive Infrared sensor detects motion.
- **Infrared LEDs:** Provide illumination for night vision without visible flash.
- **LCD Screen:** 2.0-inch color display for menu navigation and viewing media.
- **Control Buttons:** For navigating menus and settings.
- **SD Card Slot:** Insert your SD card here for storage.
- **Battery Tray:** Holds 8 AA batteries.
- **Micro USB Port:** For connecting to a computer to transfer data.
- **12V DC External Power Port:** For optional external power supply.
- **Latch:** Secures the camera housing.

## 4. SETUP

### 4.1 Battery Installation

1. Open the camera housing by releasing the side latches.
2. Locate the battery tray at the bottom of the camera.
3. Insert 8 AA batteries into the battery tray, ensuring correct polarity (+/-).
4. Slide the battery tray back into the camera until it clicks securely.

### 4.2 SD Card Installation

1. With the camera housing open, locate the SD card slot on the side.
2. Insert a 32GB SD card (Class 10 or higher recommended) into the slot with the metal contacts facing down, until it clicks into place.
3. To remove, push the SD card in slightly until it springs out.

### 4.3 Mounting the Camera

The WOSODA W300 Trail Camera can be mounted using the included mounting belt or wall mount.

1. **Tree Mount (using mounting belt):** Thread the mounting belt through the slots on the back of the camera. Secure the camera to a tree or pole at the desired height and angle.
2. **Wall Mount (using wall mount and screws):** Attach the wall mount to a flat surface using the provided screws. Then, attach the camera to the wall mount, adjusting the angle as needed.

Ensure the camera is securely fastened and positioned to capture the desired area, avoiding direct sunlight or heat sources that might trigger false detections.

## 5. OPERATING INSTRUCTIONS

---

### 5.1 Powering On/Off

- To power on, slide the power switch to the 'ON' position. The LCD screen will light up.
- To power off, slide the power switch to the 'OFF' position.

### 5.2 Menu Navigation

Use the control buttons (Up, Down, Left, Right, OK, Menu) to navigate through the camera's settings on the LCD screen.

### 5.3 Setting Date and Time

1. Power on the camera and press the 'Menu' button.
2. Navigate to the 'Date/Time' setting using the arrow buttons and press 'OK'.
3. Adjust the year, month, day, hour, and minute using the arrow buttons and confirm each selection with 'OK'.
4. Exit the menu by pressing 'Menu' again.

### 5.4 Photo/Video Mode Settings

Customize your camera's capture settings for optimal results.

- **Mode:** Select 'Photo', 'Video', or 'Photo+Video'.
- **Photo Resolution:** Choose from various resolutions up to 36MP for still images.
- **Video Resolution:** Select resolutions up to 1920P HD for video recording.
- **Trigger Speed:** The camera features a rapid 0.2-second trigger speed to capture fast-moving subjects.

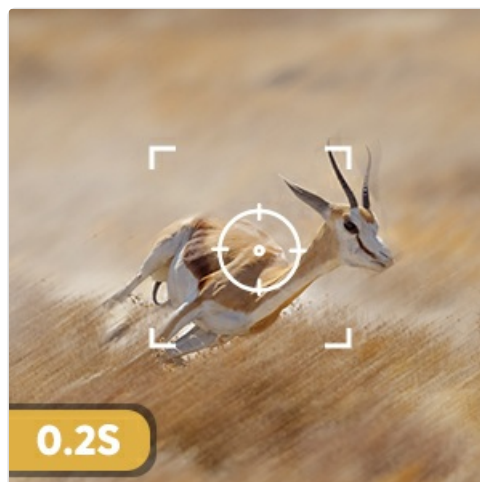


Figure 5.1: Fast 0.2-second Trigger Speed.

- **PIR Sensitivity:** Adjust the Passive Infrared sensor sensitivity (Low, Medium, High) based on environmental conditions to prevent false triggers.
- **Night Vision:** The camera utilizes 32 infrared LEDs for clear night vision up to 80 feet.

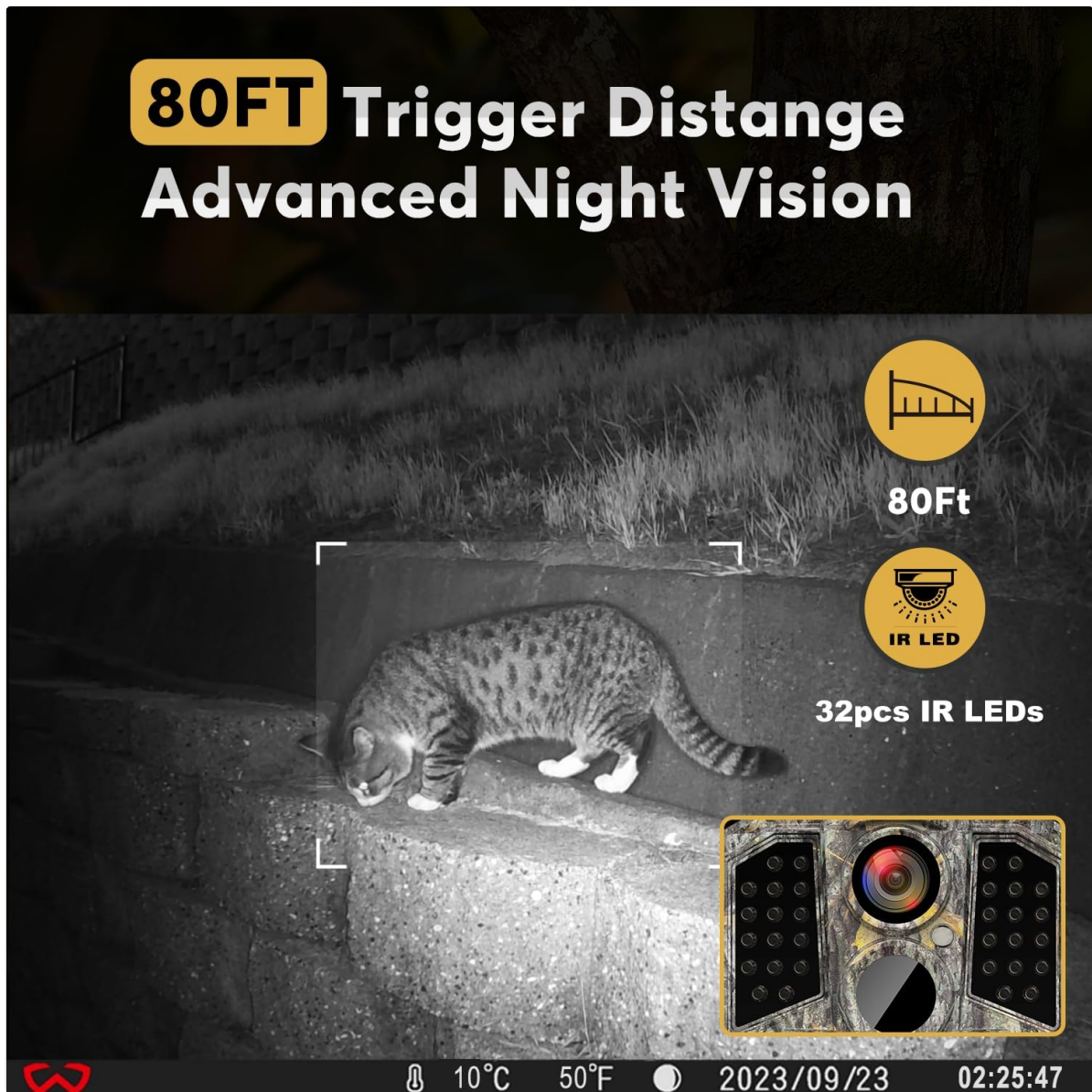


Figure 5.2: Advanced Night Vision with 80FT Range.

- **Wide Angle Lens:** The 120° wide-angle lens captures a broader field of view.

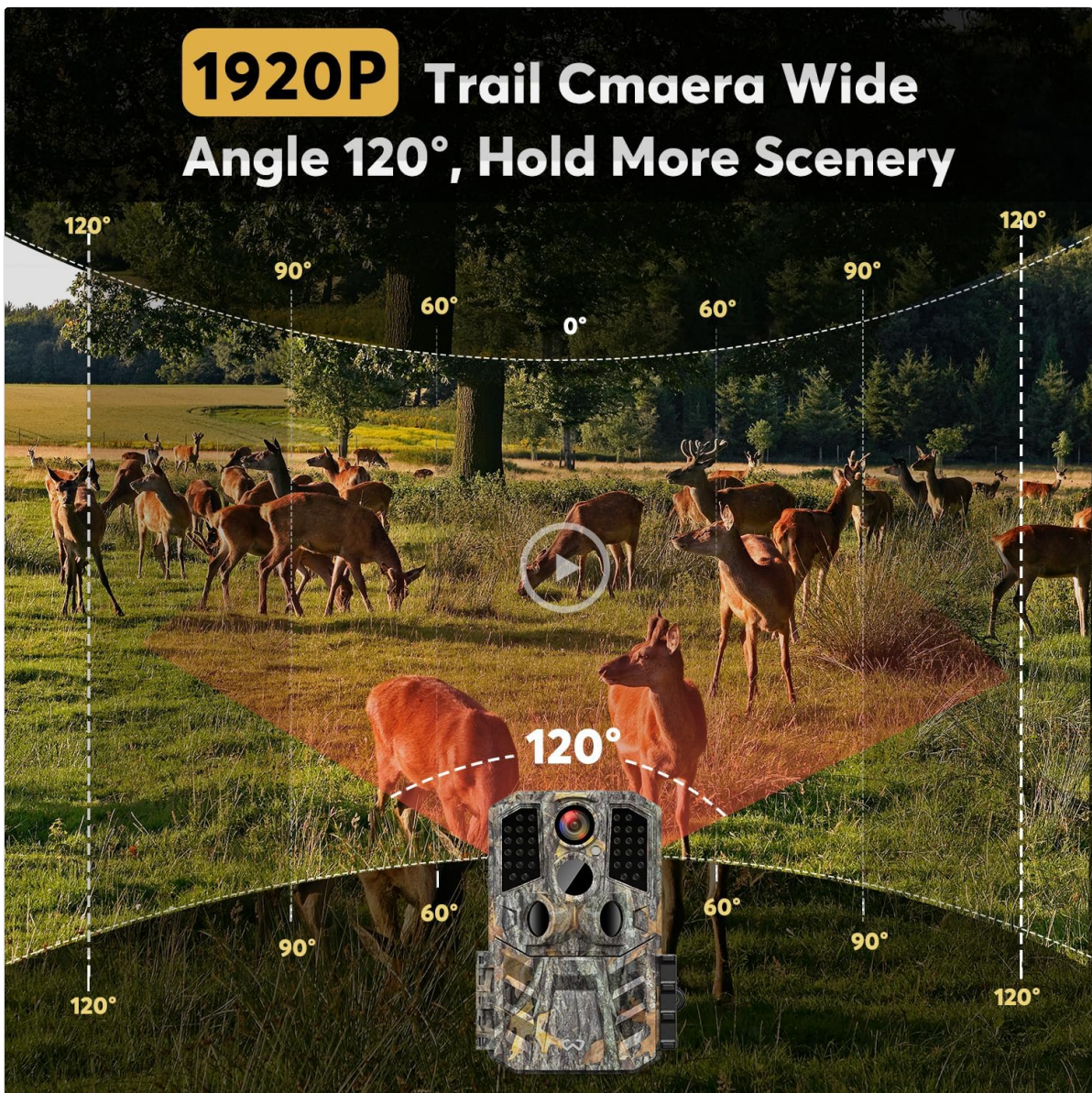


Figure 5.3: 120° Wide-Angle Detection.

## 5.5 Viewing Photos and Videos

You can view captured media directly on the camera's 2.0-inch LCD screen or by connecting the camera to a computer.

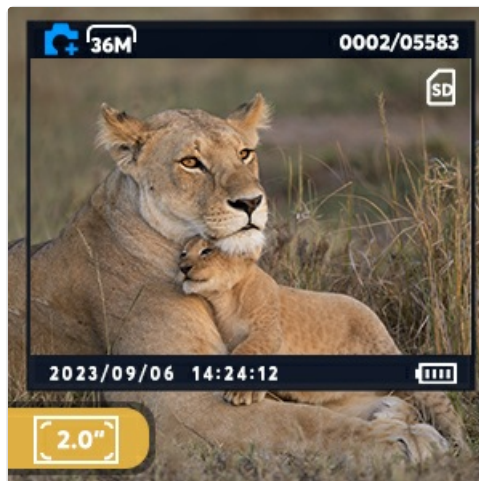


Figure 5.4: 36MP Photo Capture and On-Camera Viewing.

## 5.6 Connecting to a Computer

To transfer files, connect the camera to your computer using the provided Micro USB cable.



*Figure 5.5: Connecting the Camera to a Computer.*

1. Ensure the camera is powered off.
2. Connect one end of the Micro USB cable to the camera's USB port and the other end to your computer.
3. The camera will appear as a removable disk drive on your computer. You can then access and transfer photos and videos.

## 6. MAINTENANCE

---

### 6.1 Cleaning

- Wipe the camera's exterior with a soft, damp cloth.
- Use a lens cleaning cloth to gently clean the camera lens and PIR sensor window. Avoid abrasive materials.

### 6.2 Battery Care

- Replace all batteries simultaneously. Do not mix old and new batteries or different battery types.
- Remove batteries if the camera will not be used for an extended period to prevent leakage.

### 6.3 Storage

- Store the camera in a cool, dry place away from direct sunlight.
- Ensure the camera is clean and dry before storage.

## 7. TROUBLESHOOTING

---

If you encounter issues with your WOSODA W300 Trail Camera, refer to the following common problems and solutions.

Problem	Possible Cause	Solution
Camera not powering on	Low or dead batteries; incorrect battery polarity; power switch in 'OFF' position.	Replace batteries with fresh ones, ensuring correct polarity. Check power switch position.
No photos/videos captured	SD card full or not inserted correctly; incorrect camera mode; PIR sensor blocked or sensitivity too low.	Format or replace SD card. Ensure SD card is inserted correctly. Check camera mode settings. Adjust PIR sensitivity. Clear any obstructions from the PIR sensor.
Poor image/video quality	Dirty lens; low light conditions; incorrect resolution settings.	Clean the camera lens. Ensure sufficient lighting or adjust night vision settings. Select higher resolution settings.
False triggers	PIR sensitivity too high; camera facing heat sources (e.g., direct sun, moving branches).	Reduce PIR sensitivity. Reposition the camera to avoid heat sources or moving objects.
Water ingress/moisture inside	Housing not properly sealed; extreme weather conditions.	Ensure latches are fully closed. While the camera is IP66 rated, prolonged exposure to extreme conditions should be minimized. Contact support if issue persists.

## 8. SPECIFICATIONS

Technical specifications for the WOSODA W300 Trail Camera.

Feature	Specification
Model	W300
Still Image Resolution	Up to 36 MP
Video Resolution	1920P HD
Trigger Speed	0.2 seconds
PIR Detection Distance	Up to 80 feet
Night Vision	32 Infrared LEDs
Field of View	120° Wide Angle
Display Screen	2.0-inch Color LCD
Waterproof Rating	IP66
Power Source	8x AA Batteries (or 12V DC external power)
Storage	SD Card (up to 32GB recommended)
Connectivity	Micro USB
Operating Temperature	Not specified (typical range for outdoor electronics)
Dimensions (approx.)	4.33" x 5.79" x 3.19" (L x H x W, based on diagram)

## 9. WARRANTY AND SUPPORT

WOSODA provides customer support for its products. If you have any questions or require assistance, please do not hesitate to contact the WOSODA customer service team. They aim to answer all inquiries within 24 hours.

For support, please refer to the contact information provided with your purchase or visit the official WOSODA website.