

Manuals+

[Q & A](#) | [Deep Search](#) | [Upload](#)

manuals.plus /

- › [Ralbay](#) /
- › [Ralbay 59-inch Matte Black LED Vanity Light Instruction Manual \(Model 9822ralbay\)](#)

Ralbay 9822ralbay

Ralbay 59-inch Matte Black LED Vanity Light Instruction Manual

Model: 9822ralbay

1. INTRODUCTION

Thank you for choosing the Ralbay 59-inch Matte Black LED Vanity Light. This manual provides essential information for the safe installation, operation, and maintenance of your new lighting fixture. Please read these instructions thoroughly before beginning installation and retain them for future reference.

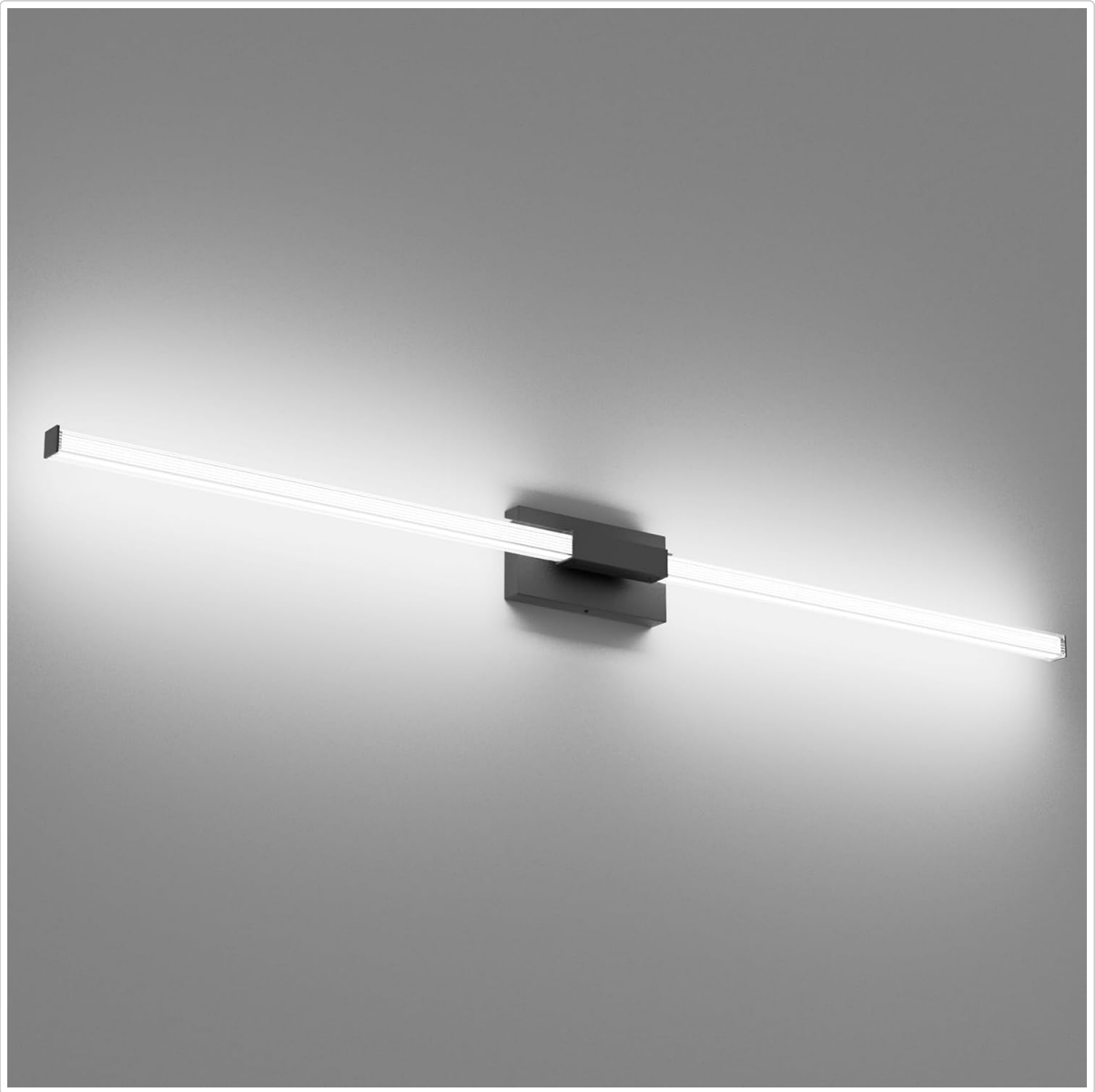


Image 1.1: The Ralbay 59-inch Matte Black LED Vanity Light, showcasing its sleek design and bright illumination.

2. SAFETY INFORMATION

WARNING: To reduce the risk of electric shock, ensure the electricity is turned off at the circuit breaker or fuse box before installation or servicing. Consult a qualified electrician if you are unsure about the installation process.

- Always disconnect power before installing, cleaning, or replacing the light fixture.
- This product is designed for indoor use only.
- Do not attempt to modify the fixture. Any modifications may void the warranty and create a safety hazard.
- Handle the fixture with care to prevent damage.
- Ensure all electrical connections are secure and comply with local codes and ordinances.

3. PACKAGE CONTENTS

Verify that all components are present and undamaged before proceeding with installation. If any parts are missing or damaged, contact customer support.

- Ralbay 59-inch LED Vanity Light Fixture
- Mounting Hardware (screws, wire nuts, USA standard installation back plate)
- Instruction Manual

4. SPECIFICATIONS

Feature	Specification
Brand	Ralbay
Model Number	9822ralbay
Color	Matte Black
Material	Metal (Base), Acrylic (Shade)
Style	Modern
Room Type	Bathroom
Product Dimensions (L x W x H)	59.05" x 3.23" x 8.66" (approximate, based on image)
Extension from Wall	3.23 inches (82mm)
Indoor/Outdoor Usage	Indoor
Power Source	AC
Installation Type	Surface Mount, Hardwired
Light Source Type	Integrated LED
Light Color	White Light (5500K Color Temperature)
Wattage	42 Watts
Brightness	2730 Lumens
Switch Type	No Switch (controlled by wall switch)
Water Resistance Level	Water Resistant

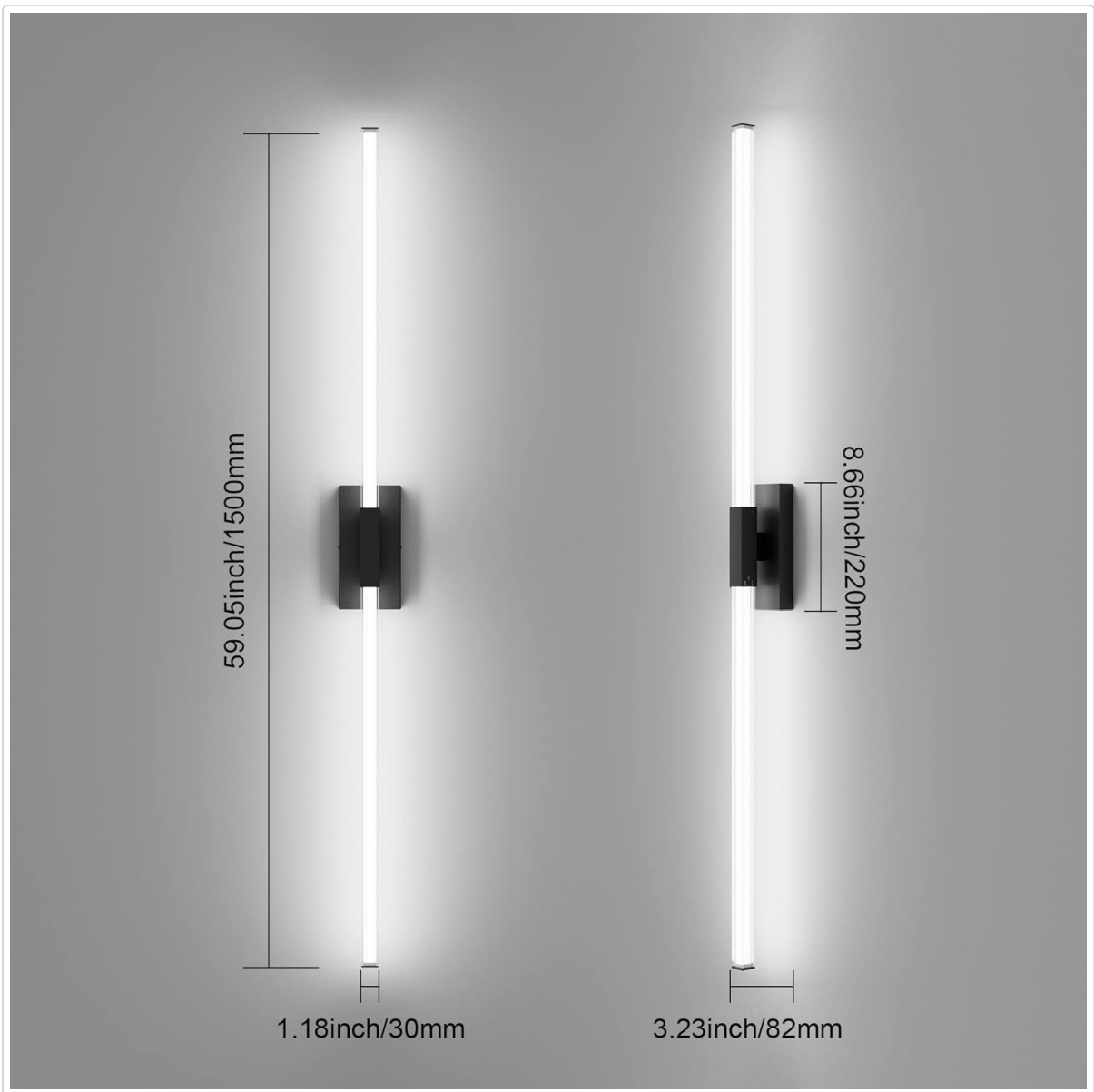


Image 4.1: Detailed dimensions of the Ralbay 59-inch LED Vanity Light.

5. SETUP AND INSTALLATION

This fixture is hardwired and designed for surface mounting to a standard electrical box. Some minor assembly of parts may be required.

5.1 Components Overview

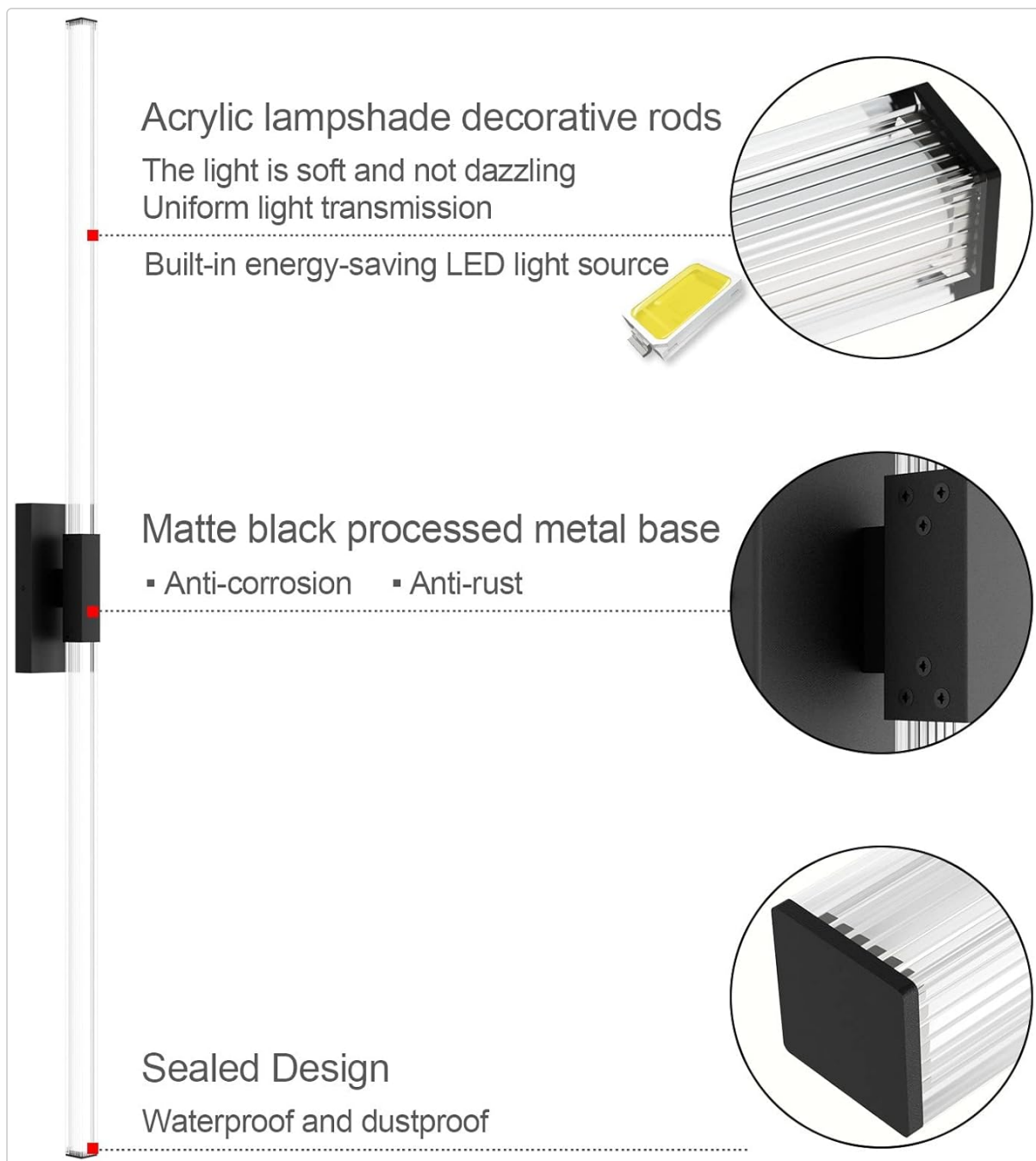


Image 5.1: Key components including the acrylic lampshade rods, matte black metal base, and sealed design for water and dust resistance.

5.2 Installation Steps

1. **Turn Off Power:** Locate the circuit breaker or fuse box and turn off the power to the electrical box where you will install the fixture.
2. **Prepare Mounting Surface:** Ensure the electrical box is securely mounted and the surface is clean and dry.
3. **Attach Mounting Plate:** Secure the USA standard installation back plate to the electrical box using the provided screws.
4. **Connect Wiring:** Carefully connect the fixture's wires to the reserved house wires. Connect the live (black) wire to the live wire, the neutral (white) wire to the neutral wire, and the ground (green or bare copper) wire to the ground wire. Use the provided wire nuts to secure connections.
5. **Mount Fixture:** Align the fixture with the mounting plate and secure it in place with the provided screws. Ensure the fixture is flush against the wall.
6. **Restore Power:** Once the fixture is securely installed, turn the power back on at the circuit breaker.

5.3 Installation Orientation Examples



Image 5.2: Example of horizontal installation above a mirror.



Image 5.3: Example of vertical installation beside mirrors.

6. OPERATING INSTRUCTIONS

The Ralbay LED Vanity Light is designed for simple operation. It does not feature an integrated switch or dimmer. Control the light using your standard wall switch connected to the fixture's electrical circuit.

- **To Turn On:** Flip the connected wall switch to the 'ON' position.
- **To Turn Off:** Flip the connected wall switch to the 'OFF' position.

7. MAINTENANCE

Regular maintenance helps ensure the longevity and optimal performance of your light fixture.

- **Cleaning:** Before cleaning, ensure the power is turned off. Use a soft, dry, or slightly damp cloth to wipe the fixture. Avoid abrasive cleaners, solvents, or polishes as they may damage the finish or

acrylic.

- **Bulb Replacement:** This fixture uses integrated LED lighting, meaning there are no bulbs to replace. The LED light source is designed for long-term use.
- **Inspection:** Periodically check for any loose connections or signs of wear. If any issues are found, disconnect power and consult a qualified electrician.

8. TROUBLESHOOTING

If you encounter issues with your Ralbay LED Vanity Light, refer to the following common troubleshooting steps:

- **Light Does Not Turn On:**
 - Check if the power is on at the circuit breaker.
 - Ensure the wall switch is in the 'ON' position.
 - Verify all wiring connections are secure. (*Consult a qualified electrician if unsure.*)
- **Light Flickers:**
 - Ensure all wiring connections are tight.
 - Confirm the fixture is not connected to a dimmer switch, as this fixture is not designed for dimming.
- **Insufficient Brightness:**
 - Verify the power supply voltage matches the fixture's requirements (110 Volts).
 - Ensure the acrylic lampshade is clean and free of obstructions.

If problems persist after following these steps, please contact Ralbay customer support.

9. WARRANTY AND SUPPORT

Ralbay is committed to providing high-quality products. While specific warranty duration is not detailed here, the Ralbay team guarantees product quality.

For any questions or support regarding your product, please contact Ralbay customer service. To do so, log in to your purchase account, locate your order ID, and use the 'Contact Seller' option. Our customer service team aims to resolve your inquiries within 24 hours.

We value your satisfaction and are dedicated to improving your shopping experience.