

[Manuals.plus](#) /

> [Toshiba](#) /

> Toshiba 25L 900W Microwave Oven User Manual MW3-AM25PFI

Toshiba MW3-AM25PFI

Toshiba 25L 900W Microwave Oven User Manual

Model: MW3-AM25PFI

INTRODUCTION

Thank you for purchasing the Toshiba 25L 900W Microwave Oven. This manual provides essential information for the safe and efficient operation of your appliance. Please read these instructions thoroughly before use and retain them for future reference. This microwave oven features Origin Inverter technology for precise cooking and Chef Defrost for efficient thawing.

IMPORTANT SAFETY INSTRUCTIONS

When using electrical appliances, basic safety precautions should be followed, including the following:

- Read all instructions before using the appliance.
- Do not attempt to operate this oven with the door open as this can result in harmful exposure to microwave energy.
- Do not heat liquids or other foods in sealed containers since they are liable to explode.
- Only allow children to use the oven without supervision when adequate instructions have been given so that the child is able to use the oven in a safe way and understands the hazards of improper use.
- Maintain the oven in a clean condition. A dirty oven may lead to deterioration of the surface that could adversely affect the life of the appliance and possibly result in a hazardous situation.
- Do not use corrosive chemicals or vapors in this appliance.
- Ensure the appliance is properly grounded.

SETUP AND INSTALLATION

Proper setup ensures optimal performance and safety of your microwave oven.

Unpacking

1. Carefully remove the microwave oven from its packaging.
2. Remove all packing materials, including the turntable, turntable ring, and any protective film from the oven surfaces.

3. Inspect the oven for any damage, such as a misaligned or bent door, damaged door seals and sealing surface, broken or loose door hinges and latches, or dents inside the cavity or on the door. If any damage is present, do not operate the oven and contact customer service.

Placement

Place the microwave oven on a flat, stable surface that can support its weight and the heaviest food item likely to be cooked in it. Ensure adequate ventilation around the unit.

POWERFUL MICROWAVE WITH 900W
900w provides faster and more convenient cooking.



Figure 1: Microwave Oven Dimensions. The oven measures approximately 46.9 cm (width) x 36.5 cm (depth) x 28 cm (height), with a 28.8 cm turntable.

Power Connection

Plug the power cord into a standard 240V AC electrical outlet. Do not use extension cords or adapters.

OPERATING INSTRUCTIONS

This section details the functions and operation of your Toshiba microwave oven.



Figure 2: Toshiba 25L 900W Microwave Oven.

Control Panel Overview

The control panel features a digital display, function buttons, and a rotary knob for setting time and weight.

ORIGIN INVERTER MICROWAVE WITH SLEEK MORANDI GREY



Inverter Tech.



10 Power Levels



Chef Defrost



Fit 10 inch pizza



Figure 3: Key Features of the Microwave Oven.

Setting Cooking Time and Power Level

- Place food in the microwave-safe container on the turntable.
- Close the door securely.
- Press the "Microwave" button to select the desired power level (10 levels available).
- Rotate the knob to set the cooking time.
- Press "Start/+30SEC" to begin cooking.

10 POWER LEVELS FOR A RANGE OF DISHES

Meeting your daily cooking requirements from defrost to reheat to boil.



Figure 4: Recommended Power Levels for Various Dishes.

Origin Inverter Technology

The Origin Inverter technology provides a linear power output with precise temperature control, ensuring even cooking and heating. This technology also contributes to reduced noise levels (57 dB) compared to traditional microwave ovens.

ORIGIN INVERTER TECHNOLOGY

Delivering a linear power output with precise temperature.

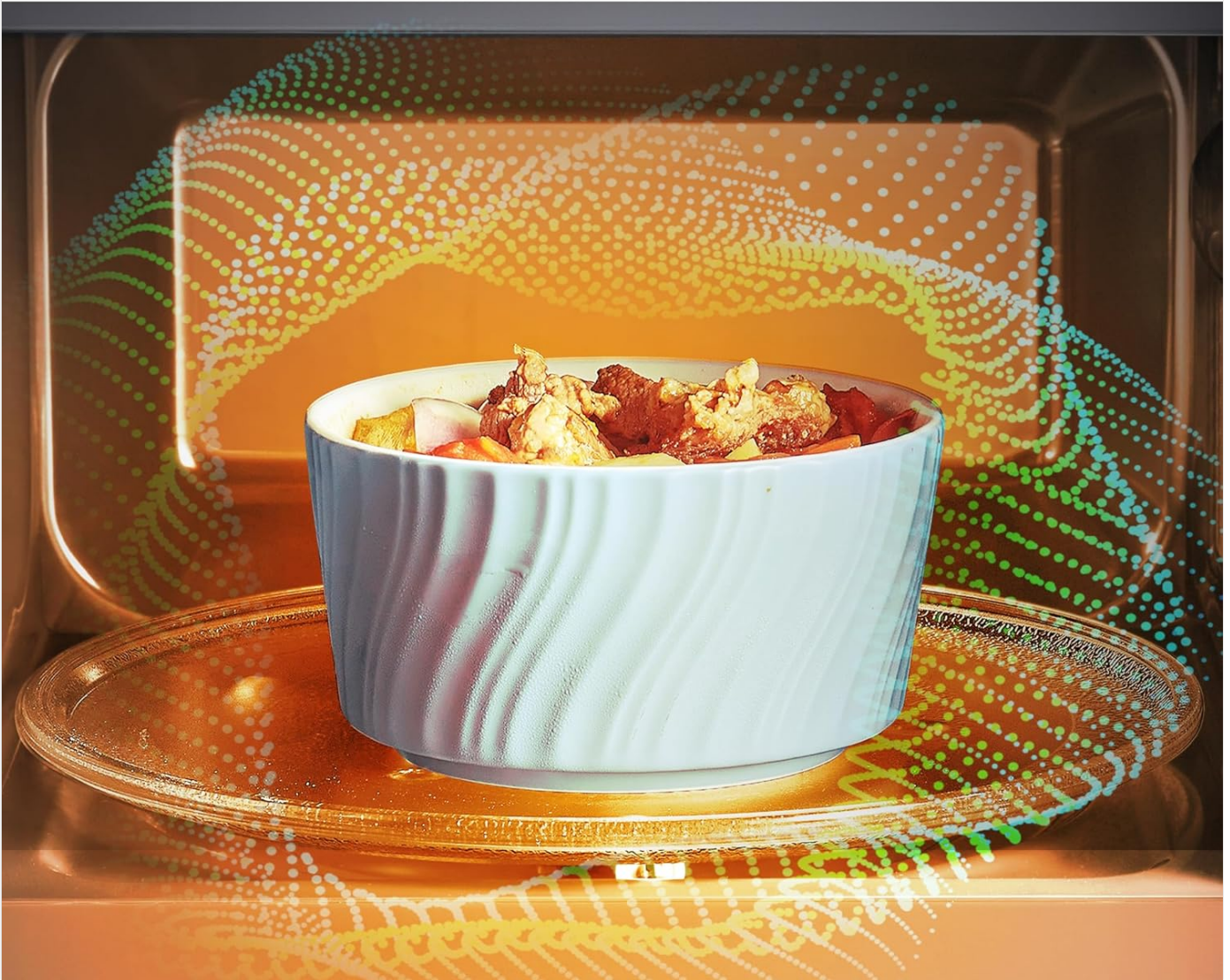


Figure 5: Origin Inverter Technology for Even Heating.

Chef Defrost Function

The Chef Defrost program intelligently adjusts power based on the variation of meat, preventing overheating on the outside while ensuring thorough thawing. This can shorten defrosting time by up to 40%.

- Press the "Chef Defrost" button.
- Rotate the knob to select the weight of the food.
- Press "Start/+30SEC" to begin defrosting.

FAST DEFROST BY CHEF DEFROST

Smartly adjust 4-stage power base on the variation of meat; Shorten time faster up to 40%

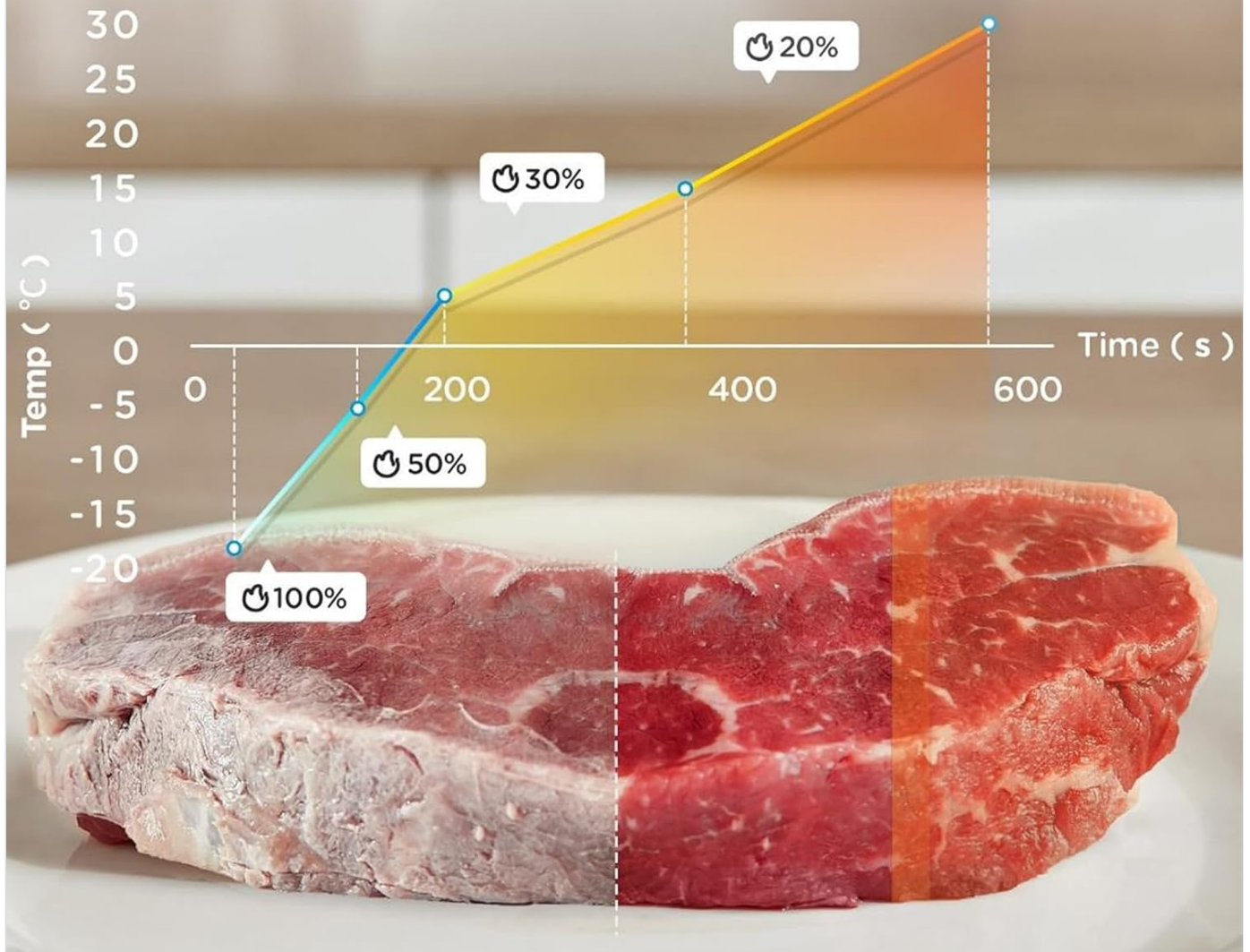


Figure 6: Chef Defrost Efficiency Graph.

Automatic Menus

The microwave includes 7 automatic menus for common food items, simplifying cooking. Refer to the specific menu guide in the appliance for details on each program.

900W Power Output

With a powerful 900W output, this microwave provides fast and convenient cooking for a variety of dishes.

■ 25L LARGE CAPACITY

25L capacity with a 288mm glass turntable.



Figure 7: 900W Power Output.

MAINTENANCE AND CLEANING

Regular cleaning and maintenance will prolong the life of your microwave oven and ensure safe operation.

Cleaning the Oven Interior

- Always unplug the oven before cleaning.
- Wipe the interior cavity with a damp cloth after each use to prevent food splatters from drying.
- For stubborn stains, place a bowl of water with lemon slices inside and microwave for 2-3 minutes. The steam will loosen the stains, making them easier to wipe away.
- Clean the turntable and turntable ring with warm, soapy water. They are typically dishwasher safe.

Cleaning the Exterior

- Wipe the exterior surfaces with a soft, damp cloth.
- Avoid using abrasive cleaners or scouring pads, as they can scratch the surface.
- Clean the door and door seals regularly to ensure proper closure and prevent microwave leakage.

TROUBLESHOOTING

Refer to this section for common issues and their solutions. If the problem persists, contact customer support.

Problem	Possible Cause	Solution
Oven will not start	Power cord not plugged in; Door not closed properly; Fuse blown or circuit breaker tripped.	Ensure plug is firmly in outlet; Close door securely; Check household fuse/circuit breaker.
Food not cooking evenly	Food not stirred or turned; Incorrect power level or cooking time.	Stir or turn food halfway through cooking; Adjust power level and time as needed.
Light inside is dim	This is a characteristic of the design.	No action required. This does not affect performance.
Clock loses time	Minor drift in internal clock.	Reset the clock periodically as needed.

SPECIFICATIONS

Feature	Detail
Brand	Toshiba
Model Number	AM9P02-PV0E00 (MW3-AM25PFI)
Color	Morandi Gray
Capacity	25 Liters
Power Output	900 Watts
Voltage	240 Volts
Dimensions (L x W x H)	36.5 x 46.9 x 28 cm
Product Weight	8.6 kg
Material	Metal
Special Features	Origin Inverter, Chef Defrost, 10 Power Levels, 7 Automatic Menus, Child Safety Lock, Turntable

WARRANTY AND SUPPORT

For warranty information and customer support, please refer to the warranty card included with your product or visit the official

Toshiba website. Keep your purchase receipt as proof of purchase.

For further assistance, you may visit the [Toshiba Brand Store on Amazon](#).



© 2025 Toshiba. All rights reserved.