

HTC HS01-HTC

HTC Neckband Headphones Bluetooth User Manual

Model: HS01-HTC

1. INTRODUCTION

Thank you for choosing the HTC Neckband Headphones. This manual provides essential information for setting up, operating, maintaining, and troubleshooting your device. Please read it carefully to ensure optimal performance and longevity of your headphones.



Image: Front view of the HTC Neckband Headphones, showcasing the neckband design and earbuds.

Key Features:

- **Hall Magnetic Sensor:** Automatically pauses music when earbuds are connected, saving power.

- **10mm Drivers:** Delivers well-balanced audio with rich bass and enhanced clarity.
- **Game Mode (40ms Ultra-Low Latency):** Provides a smooth and responsive audio experience for gaming.
- **Bluetooth 5.3:** Ensures instant pairing and stable, efficient wireless connection up to 32.8 feet.
- **IPX5 Waterproof:** Designed to resist sweat and splashes, suitable for workouts and outdoor activities.
- **16 Hours Playtime:** Extended battery life for prolonged use.
- **Ergonomic Design:** Lightweight silicone neckband and comfortable earbuds with multiple eartip sizes.

2. SETUP

2.1 What's in the Box

Before you begin, please ensure all components are present:

- 1 x HTC Wireless Neckband Earphone
- 1 x USB-C cable
- 2 Pairs x Rubber eartips (S/L)

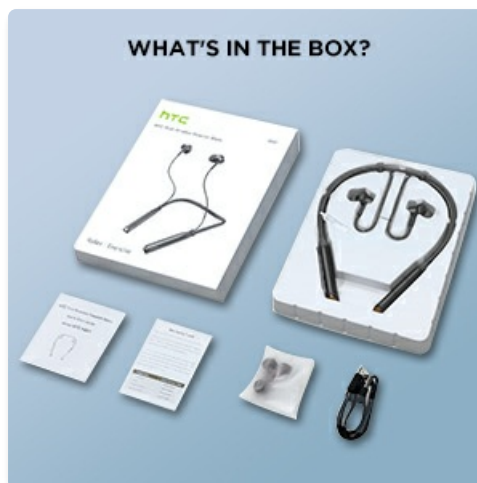


Image: The contents of the product packaging, including the headphones, USB-C cable, and extra eartips.

2.2 Charging the Headphones

Before first use, fully charge your headphones. A full charge takes approximately 1.5 hours.

1. Locate the USB-C charging port on the neckband.
2. Connect the provided USB-C cable to the charging port.
3. Connect the other end of the USB-C cable to a compatible USB power source (e.g., wall adapter, computer USB port).
4. The indicator light will show charging status (refer to LED indicator section in Operating for details).

2.3 Bluetooth Pairing

To connect your headphones to a device:

1. Ensure the headphones are charged and powered off.
2. Press and hold the Power button for approximately 3 seconds until the LED indicator flashes blue and red, indicating pairing mode.
3. On your device (smartphone, tablet, computer), enable Bluetooth and search for available devices.

4. Select "HTC Neckband" from the list of found devices.
5. Once connected, the LED indicator will turn solid blue or flash blue slowly.

2.4 Wearing the Headphones

For optimal sound and comfort, choose the correct size eartips and position the neckband comfortably around your neck.

Perfect Comfy & Secure Fit

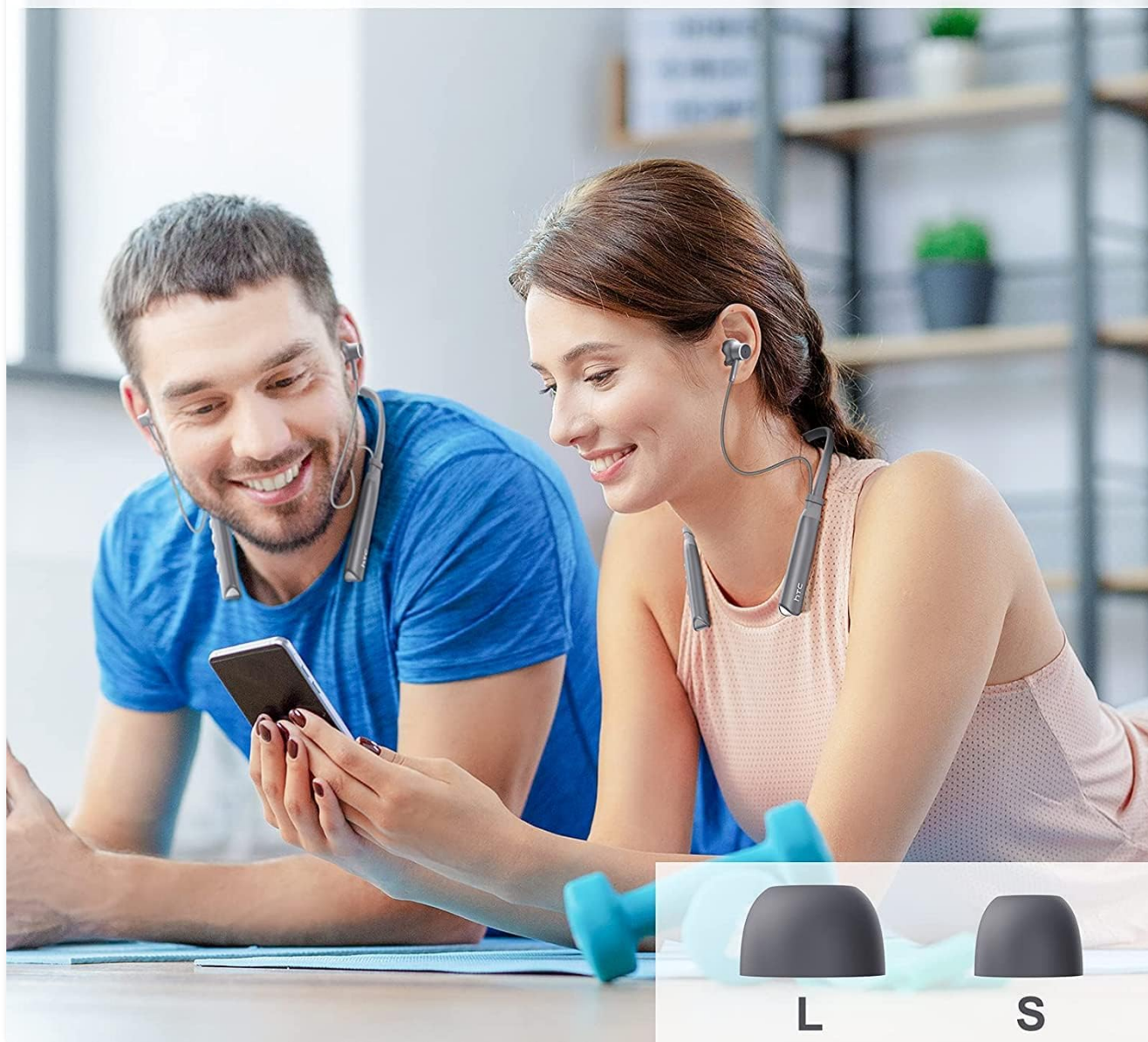


Image: A man and a woman wearing the neckband headphones, demonstrating a comfortable and secure fit. Insets show different eartip sizes (L and S).

The headphones come with three different sizes of eartips (S/M/L). Experiment to find the size that provides a snug fit and good seal in your ear canal.

3. OPERATING INSTRUCTIONS

3.1 Button Functions

The control buttons are located on the right side of the neckband. Familiarize yourself with their functions:



Image: A detailed diagram illustrating the functions of each button on the neckband, including power, volume, and mode controls.

- **Power Button (Middle):**

- Press and hold for 3 seconds: Power On/Off
- Press once: Play/Pause music, Answer/End call
- Press and hold for 3 seconds during incoming call: Reject call

- **Volume Up (+) Button:**

- Press once: Increase volume
- Press and hold for 2 seconds: Next song

- **Volume Down (-) Button:**

- Press once: Decrease volume
- Press and hold for 2 seconds: Previous song

- **Game Mode Button (Leftmost):**

- Press and hold for 2 seconds: Toggle Game Mode On/Off (40ms ultra-low latency)

- **Voice Assistant (Rightmost):**

- Press twice: Activate voice assistant (Siri, Google Assistant, etc.)

3.2 Magnetic Hall Function

The earbuds feature a magnetic sensor for convenient control and power saving:

- When the two earplugs are magnetically attached together, music will automatically pause to conserve battery.

- Separate the earplugs and press the Play button to resume music playback.

MAGNETIC SUCTION CONVENIENT TO USE



Image: Illustration showing the magnetic suction feature of the earbuds, demonstrating how they merge and separate.

3.3 IPX5 Water Resistance

The headphones are rated IPX5 waterproof, meaning they are resistant to splashes and sweat. They are suitable for light rain and intense workouts but should not be submerged in water.

IPX5 Waterproof Design

Easily deal with bad weather Sweatproof



Image: A man exercising outdoors while wearing the headphones, with an IPX5 waterproof icon indicating its resistance to sweat and splashes.

4. MAINTENANCE

4.1 Cleaning

Regular cleaning helps maintain the headphones' performance and hygiene:

- Use a soft, dry, lint-free cloth to wipe the neckband and earbud surfaces.
- For eartips, remove them from the earbuds and clean with a mild soap solution if necessary. Rinse thoroughly and allow to air dry completely before reattaching.
- Do not use abrasive cleaners, alcohol, or chemical solvents.

4.2 Storage

When not in use, store your headphones in a cool, dry place away from direct sunlight and extreme temperatures. Avoid tangling the cables.

5. TROUBLESHOOTING

If you encounter issues with your HTC Neckband Headphones, try the following solutions:

Problem	Possible Cause	Solution
Headphones do not power on	Low battery	Charge the headphones fully.
Cannot pair with device	Headphones not in pairing mode; Bluetooth off on device; device too far	Ensure headphones are in pairing mode (flashing blue/red). Turn on Bluetooth on your device. Move device closer to headphones (within 32.8 ft).
No sound or low volume	Volume too low; headphones not connected; incorrect audio output selected	Increase volume on both headphones and connected device. Re-pair headphones. Check audio output settings on your device.
Audio cuts out or distorts	Interference; device too far; low battery; Bluetooth absolute volume setting	Move away from sources of interference (Wi-Fi routers, other Bluetooth devices). Move closer to your device. Charge headphones. If experiencing issues with audio cutting out, especially with bassy sounds, try enabling 'Bluetooth absolute volume' on your device settings if it was previously disabled.
Magnetic function not working	Earbuds not properly aligned	Ensure the magnetic surfaces of both earbuds are clean and fully touching.

If the problem persists after trying these steps, please contact customer support.

6. SPECIFICATIONS

Feature	Detail
Model Name	HS01-HTC
Connectivity Technology	Wireless (Bluetooth)

Feature	Detail
Bluetooth Version	5.3
Bluetooth Range	Up to 32.8 Feet
Audio Driver Type	Dynamic Driver (10mm)
Frequency Range	20 Hz - 20,000 Hz
Battery Life	Up to 16 Hours Playtime
Charging Time	Approx. 1.5 Hours (0% to 100%)
Water Resistance Level	IPX5 (Water Resistant)
Control Type	Media Control, Touch
Ear Placement	In Ear
Item Weight	8.4 ounces
Manufacturer	HTC
UPC	768649985927

7. WARRANTY AND SUPPORT

7.1 Warranty Information

Your HTC Neckband Headphones come with a 360 Days Warranty Extension. Please retain your proof of purchase for warranty claims.

7.2 Customer Support

For any questions, technical assistance, or warranty inquiries, please contact HTC customer support. We provide 7*24 Live Chat Support to assist you.

You can also visit the official HTC Store for more information and product updates[HTC Store on Amazon](#)