

Yottamaster DM1

Yottamaster DM1 1-Bay 2.5-inch NAS Enclosure User Manual

Model: DM1

1. INTRODUCTION

This manual provides detailed instructions for the setup, operation, and maintenance of your Yottamaster DM1 1-Bay 2.5-inch NAS Enclosure. Please read this manual thoroughly before using the device to ensure proper functionality and data security.

2. WHAT'S IN THE BOX

Verify that all items listed below are included in your product packaging:

Packing Include



Image: Contents of the Yottamaster DM1 NAS Enclosure package, including the enclosure, USB cable, power adapter, Ethernet cable, and user manual.

- Yottamaster DM1 NAS Enclosure
- USB Cable
- Power Adapter
- Ethernet Cable
- User Manual

3. SPECIFICATIONS

Feature	Description
Brand	Yottamaster
Model	DM1
Color	Black
Material	Acrylonitrile Butadiene Styrene (ABS), Aluminum
Compatible Devices	Server (supports 2.5-inch SATA hard drives up to 8TB)
Mounting Type	Surface Mount, Tabletop

Supports 8TB 2.5 inch Hard Drive

Equivalent to the memory capacity of about 60 smartphones



Image: The Yottamaster DM1 NAS Enclosure highlighting its support for 8TB 2.5-inch hard drives, suitable for storing various file types like films, videos, photos, and documents.

4. SETUP GUIDE

Follow these steps to set up your Yottamaster DM1 NAS Enclosure:



Image: The Yottamaster DM1 NAS Enclosure with its top cover removed, revealing the internal bay for a 2.5-inch hard drive. A hard drive is shown partially inserted.

1. **Install the Hard Drive:** Open the enclosure and carefully insert your 2.5-inch SATA HDD/SSD into the designated slot. The enclosure features a tool-free, magnetic suction structure for easy installation.
2. **Connect Power and Network:** Connect the power adapter to the DC 12V port and plug the Ethernet cable into the LAN port on the back of the device. Ensure the device is powered on.
3. **Download the Weline App:** Scan the QR code located on the lid of the enclosure or on the bottom of the device to download the Weline APP. The Weline APP is available for Windows, macOS, Android, and iOS.
4. **Register an Account:** Open the Weline APP and follow the prompts to register a personal account.
5. **Bind the Device:** Scan the QR code on the back of the device using the Weline APP to bind your NAS Enclosure to your account.
6. **Format the Hard Drive:** Upon successful connection, the app will prompt you to format the hard drive. Confirm the formatting process. **Note:** Formatting will erase all data on the hard drive. Please back up any important data in advance.

Easy to Use



Image: A visual guide showing the four main steps for setting up the Yottamaster DM1 NAS: installing the HDD/SSD, connecting the Ethernet cable, scanning a QR code to download the app and register, scanning a QR code to connect the device, and formatting the hard drive.

Setup Videos:

Your browser does not support the video tag.

Video: Overview of the Yottamaster 1 Bay NAS Storage for 2.5" SATA Hard Drives DM1, demonstrating its features and basic functionality.

Your browser does not support the video tag.

Video: Instructions for installing the Weline App on iOS devices for the DM1 NAS.

Your browser does not support the video tag.

Video: Instructions for installing the Weline App on Android devices for the DM Series NAS.

5. OPERATING INSTRUCTIONS

5.1. Data Management and Access

The Yottamaster DM1 NAS allows for efficient data management and flexible access:

- **Automatic Backup:** Configure the Weline APP to automatically back up photos, videos, documents, and music from your mobile devices, freeing up local storage.
- **Global Access:** Access your stored files anytime, anywhere, through the Weline APP, eliminating distance restrictions.
- **Dual Mode Functionality:** Switch between NAS (Network Attached Storage) mode for network access and DAS (Direct Attached Storage) mode for direct connection as needed.
- **File Sharing:** Share your pictures and videos with friends and family through various social platforms supported by the Weline APP.
- **Multi-Device Connectivity:** Connect and access your NAS from multiple devices including tablets, mobile phones, PCs, and TVs.



Image: A smartphone screen displaying the Weline app, with images and videos being uploaded to the Yottamaster NAS, illustrating the 'Record Happy Moments at Any Time' feature.

No Distance Restrictions

View Your Happy Moments Anywhere



Home Party



Baby's Growing



Family Photos



Working Cloud Files

Image: A world map with lines connecting various points to the Yottamaster NAS, indicating 'No Distance Restrictions' for viewing content anywhere. Below are scenarios like home parties, baby's growth, family photos, and working cloud files.

Dual Mode NAS Hard Drive Enclosure

Switch between NAS mode (Network Attached Storage) and DAS mode (Direct Attached Storage) as desired



Image: Two panels illustrating the 'Dual Mode NAS Hard Drive Enclosure'. The top panel shows 'External Mode' (DAS) with the device connected directly to a computer. The bottom panel shows 'Network Mode' (NAS) with a smartphone accessing the device over a network.

Auto Backup

Our products automatically back up
no more worries about data loss



Image: A smartphone displaying family photos, with an arrow indicating automatic backup to the Yottamaster NAS Enclosure, emphasizing the 'Auto Backup' feature to prevent data loss.



Image: A diagram illustrating 'Intranet Transmission' speeds for the Yottamaster NAS, showing a Gigabit Ethernet port rate of MAX 120MB/s and a Wifi rate of MAX 60MB/s, with external network access at 4-7MB/s.



Image: A graphic demonstrating the storage capacity of the Yottamaster NAS, stating that 8TB is equivalent to approximately 760,000 photos, 760,000 music files, 10,000 hours of 4K UHD video, or 2,280,000 files.

5.2. Weline App Features

The Weline APP is a dedicated PC/Mobile Application Software for Yottamaster NAS (YNAS) devices. It enhances the user interface and interaction, introducing new features such as phone backup, photo management, personal folder, team folder, coffer, administrator, etc., to facilitate remote access, mobile office, and remote management of YNAS devices.

VPN Connection: VPN enables remote access from client to server through encryption and address translation. In the Weline application, SDVN technology establishes an encrypted communication tunnel and calls the mobile VPN service to transmit encrypted network data packets to ensure safe transmission. When you install Weline App for the first time, please agree to the VPN permissions, and there is no need to worry about the VPN connecting to other places or data being stolen.

Essential Software Installation for Yottamaster NAS

What is Weline APP?

Weline APP is a dedicated PC/Mobile Application Software for Yottamaster NAS (YNAS) devices. Weline APP enhances user interface and transforms user interaction, while introducing new features such as phone backup, photo management, personal folder, team folder, coffee, administrator, etc., to facilitate remote access, mobile office, and remote management of YNAS devices.

Why do you need to connect to a VPN?

VPN enables remote access from client to server through encryption and address translation. In the Weline application, SDVN technology establishes an encrypted communication tunnel and calls the mobile VPN service to transmit encrypted network data packets to ensure safe transmission. When you install Weline App for the first time, please agree to the VPN permissions, and there is no need to worry about the VPN connecting to other places or data being stolen.

Weline APP supports the following platforms:



Image: Information about the Weline APP, its features, the importance of VPN for secure remote access, and supported platforms (Windows, macOS, Android, iOS).

5.3. SAMBA Operation (Windows)

Follow these steps to set up SAMBA access on Windows:

SAMBA Operation Steps (Windows)

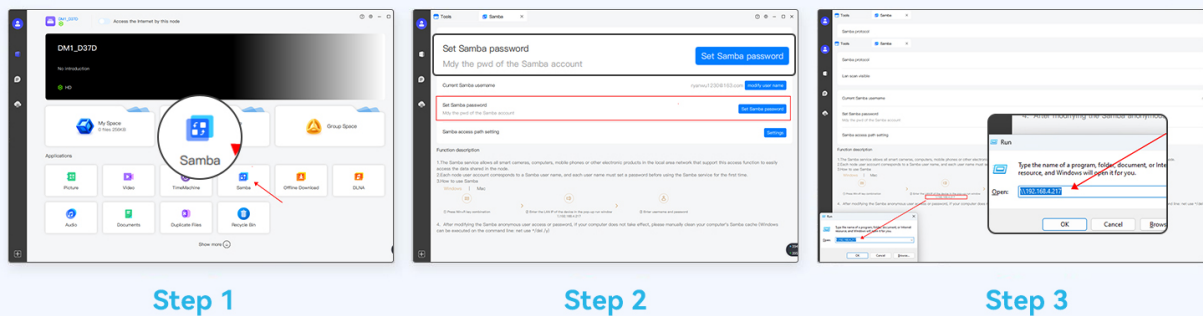


Image: Steps 1-3 for SAMBA operation on Windows, showing how to access the Samba settings in the Weline app, set a Samba password, and open the Run dialog to enter the NAS network path.

SAMBA Operation Steps (Windows)

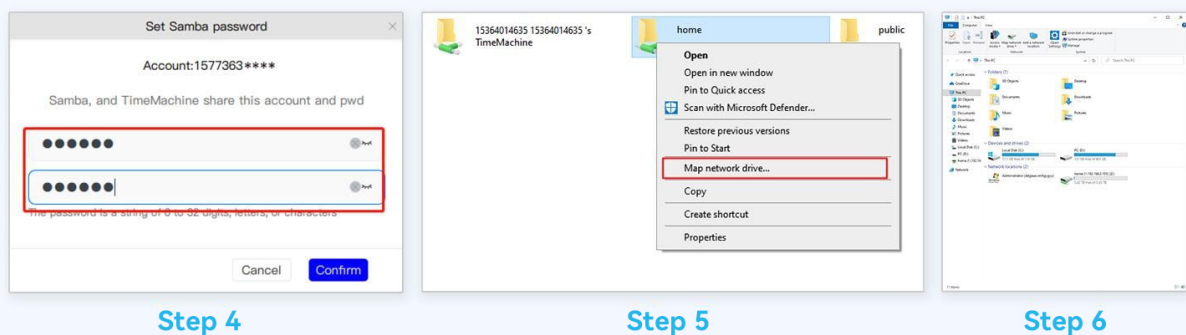


Image: Steps 4-6 for SAMBA operation on Windows, detailing how to confirm the Samba password, right-click on the network location to map a network drive, and complete the mapping process.

5.4. SAMBA Operation (macOS)

Follow these steps to set up SAMBA access on macOS:

SAMBA Operation Steps (macOS)

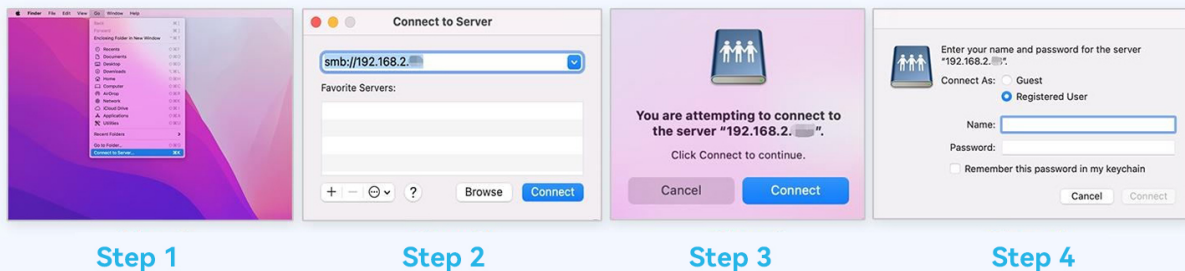


Image: Steps 1-4 for SAMBA operation on macOS, showing how to connect to a server via Finder, enter the server address, and authenticate as a registered user.

SAMBA Operation Steps (macOS)

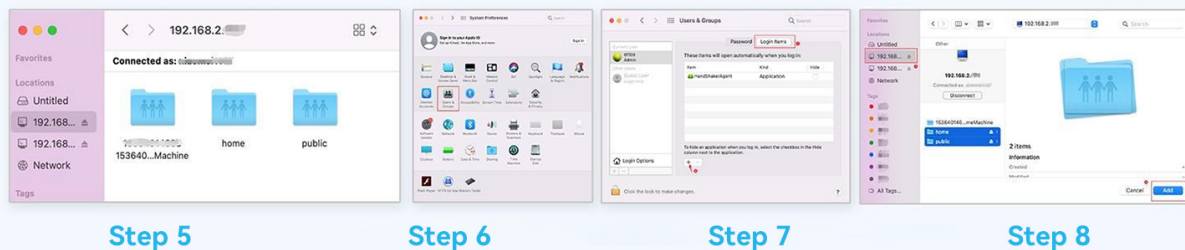


Image: Steps 5-8 for SAMBA operation on macOS, demonstrating how to access shared folders, configure login items, and add the NAS to Finder's sidebar for quick access.

5.5. DLNA Function for TV

The DM1 NAS supports DLNA, allowing you to stream media directly to your TV:

1. Click "DLNA" in the Weline APP to open the setting interface.
2. Turn on the DLNA protocol and click to set the access path for your media.
3. You can then see the NAS in your TV's "Program Source" or media server list and access your content.

DLNA Function for TV

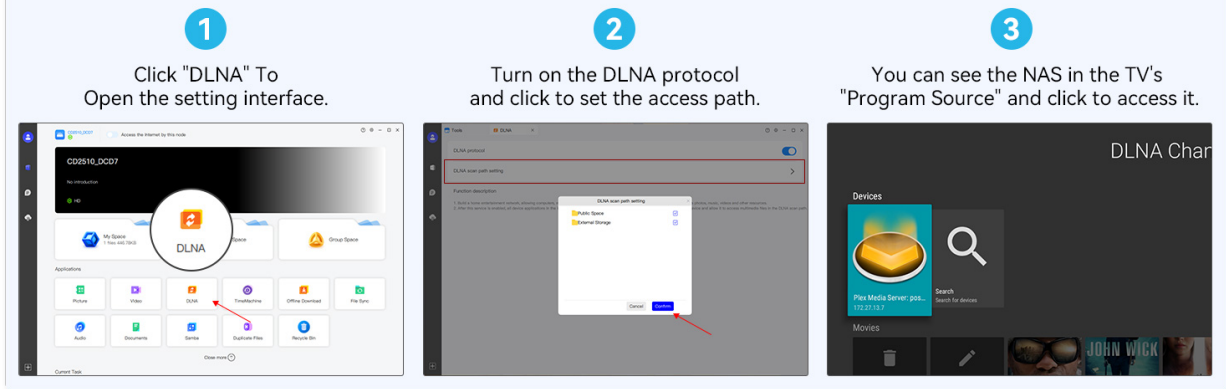




Image: Three steps illustrating how to enable and use the DLNA function for TV with the Yottamaster NAS, including opening DLNA settings, configuring the access path, and accessing the NAS from a TV's program source.





6. MAINTENANCE

To ensure the longevity and optimal performance of your Yottamaster DM1 NAS Enclosure, consider the following maintenance tips:

- **Regular Data Backup:** While the NAS provides data storage, it is always recommended to maintain an additional backup of critical data on a separate device or cloud service.
- **Firmware Updates:** Periodically check for and install any available firmware updates for the NAS and the Weline APP to ensure security and access to the latest features.
- **Environmental Conditions:** Place the NAS in a well-ventilated area, away from direct sunlight, excessive heat, and moisture to prevent overheating and damage.
- **Cleaning:** Use a soft, dry cloth to clean the exterior of the enclosure. Avoid using liquid cleaners or abrasive materials.

Related Documents - DM1

 <p>Yottamaster Quick Installation Guide Yottamaster Y-Pioneer Series</p>	Yottamaster Y-Pioneer Series Quick Installation Guide <p>This guide provides instructions for installing and configuring Yottamaster Y-Pioneer Series multi-bay hard drive enclosures. It covers hardware installation, connection, RAID setup, drive management, and initialization/formatting on Windows and macOS.</p>
 <p>Yottamaster Multi-bay Hard Drive Enclosure RAID Array Configuration Tutorial</p>	Yottamaster Multi-bay Hard Drive Enclosure RAID Array Configuration Tutorial <p>A comprehensive guide to configuring RAID arrays on Yottamaster multi-bay hard drive enclosures using the RAID management software. Learn how to download, install, and set up RAID modes for optimal data storage and protection.</p>

	<p>Yottamaster DM NAS</p> <p>Yottamaster DM NAS Samba DLNA 2.5/3.5 SATA HDD/SSD</p>
	<p>Yottamaster Y-Pioneer Series Quick Installation Guide</p> <p>A comprehensive quick installation guide for the Yottamaster Y-Pioneer Series external hard drive enclosures, covering appearance, hard drive installation, connection, formatting, RAID setup, drive management, and initialization for Windows and macOS.</p>
	<p>Yottamaster HDD Enclosure Sleep Mode Adjustment Guide</p> <p>Instructions and firmware download guide for adjusting or canceling the auto-sleep mode on Yottamaster multi-bay HDD enclosures, including support models and download links.</p>
	<p>Yottamaster T7400 PCIe Gen4 NVMe M.2 SSD Enclosure User Manual</p> <p>Comprehensive user manual for the Yottamaster T7400 M.2 NVMe SSD enclosure, detailing installation, usage, features, troubleshooting, and specifications for PCIe Gen4 performance.</p>