

Manuals+

[Q & A](#) | [Deep Search](#) | [Upload](#)

[manuals.plus](#) /

› [OBDSTAR](#) /

› [OBDSTAR P50 OBD2 Scanner User Manual](#)

OBDSTAR P50

OBDSTAR P50 Airbag Reset Tool User Manual

Model: P50

1. INTRODUCTION

The OBDSTAR P50 is a state-of-the-art intelligent airbag reset equipment designed for automotive diagnostics. It offers comprehensive functions including one-click airbag reset, SAS reset, and battery reset. This tool is engineered to provide efficient and accurate diagnostic solutions for a wide range of vehicle brands and ECU part numbers.



Figure 1: OBDSTAR P50 Main Unit

This image displays the OBDSTAR P50 diagnostic tool, highlighting its robust design and user-friendly interface with various function icons.

2. PRODUCT FEATURES

- **One-Click Airbag Reset:** Simplifies the airbag system reset process.
- **Wide Vehicle Coverage:** Supports 86 brands and over 11600+ ECU part numbers, including various MCUs.
- **Advanced Diagnostic Functions:** Includes ECU Information, Read/Erase Diagnostic Trouble Codes (DTC), Read/Write EEPROM, Read/Write FLASH, Erase Crash data, and Write Vehicle Identification Number (VIN).
- **P004 Adapter:** Designed for ECU programming, reading, and writing data in bench mode. Supports 6&14 and 3&11 CANBUS protocols, GM Single CAN, and K-line protocol.
- **User-Friendly Interface:** Equipped with a 5.0-inch capacitive touch screen and intuitive menu guidance.
- **Connectivity:** Features Wi-Fi for online service support and software upgrades.
- **Remote Assistance:** One-click remote help function for technical support.



Figure 2: Advanced Functions Overview

This image illustrates the various advanced functions of the OBDSTAR P50, such as ECU Info, Read/Erase DTC, Read/Write EEPROM, Read/Write FLASH, Erase Crash, and Write VIN.

3. PACKAGE CONTENTS

Verify that all items listed below are included in your package:

- OBDSTAR P50 Main Unit
- Main Cable
- P004 Adapter
- P004 Jumper
- 12V2A Charger
- User Manual (this document)

Packaging List



Figure 3: Packaging List

This image displays the OBDSTAR P50 device and its included accessories, such as the P004 adapter, P004 jumper, main cable, charger, and manual, along with their descriptions.

4. SETUP

4.1 Initial Charging

Before first use, ensure the OBDSTAR P50 is fully charged. Connect the provided 12V2A charger to the device and a power outlet. The charging indicator will show the charging status.

4.2 Powering On/Off

- **Power On:** Press and hold the power button until the screen illuminates.
- **Power Off:** Press and hold the power button until a shutdown prompt appears, then confirm.

4.3 Connecting to Vehicle

Locate the OBD-II port in your vehicle (typically under the dashboard). Connect the main cable from the OBDSTAR P50 to the vehicle's OBD-II port. Ensure a secure connection.

5. OPERATING INSTRUCTIONS

5.1 Navigating the Interface

The P50 features a touch-screen interface. Tap icons to select functions and use the on-screen navigation buttons (back, home) to move between menus.

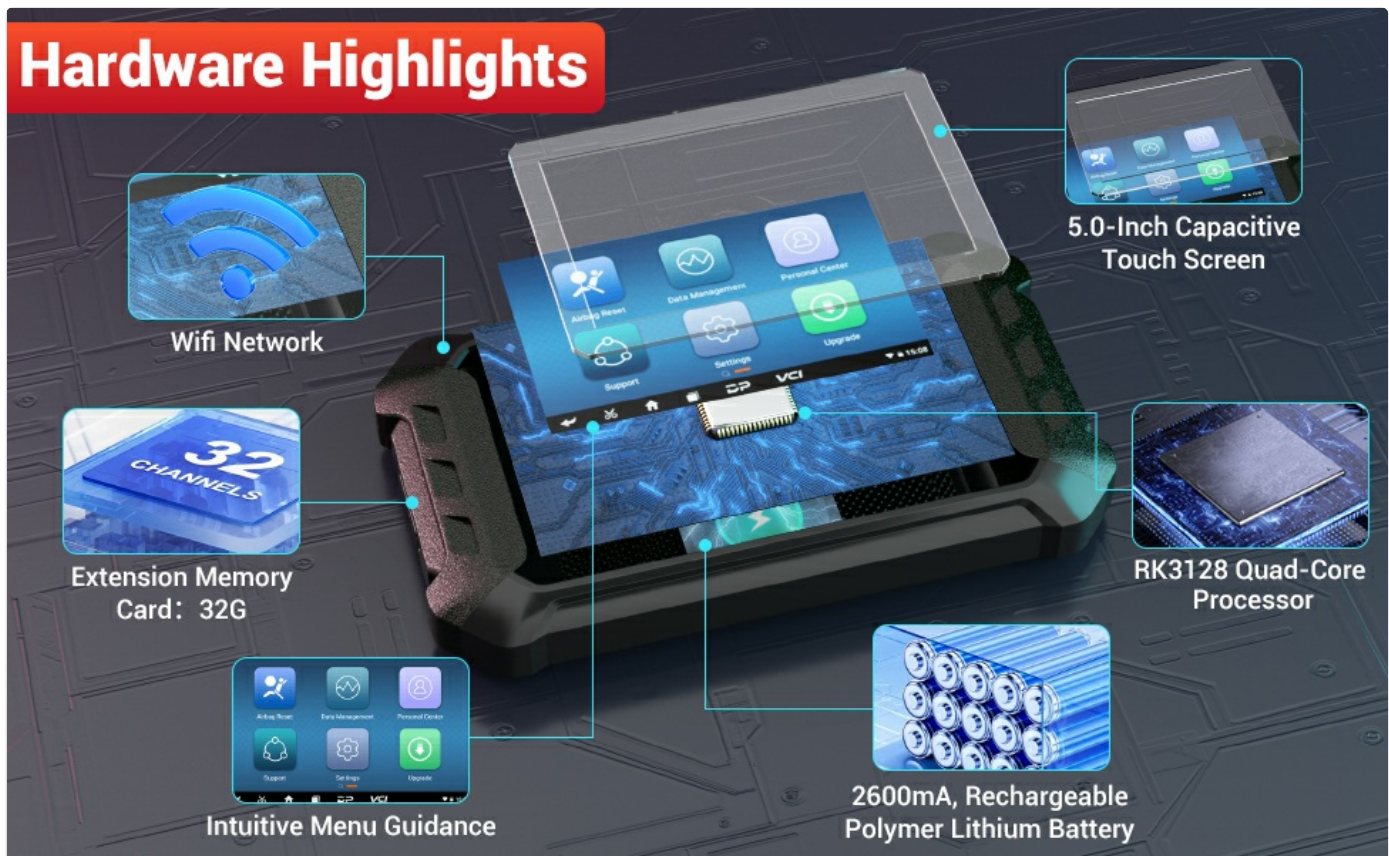


Figure 4: Hardware Highlights

This image details the internal components and features of the OBDSTAR P50, including its Wi-Fi network capability, 5.0-inch capacitive touch screen, 32G extension memory card slot, RK3128 quad-core processor, and 2600mAh rechargeable polymer lithium battery.

5.2 One-Click Reset Functions

The P50 offers convenient one-click reset options for critical vehicle systems:

- **Airbag Reset:** Resets the airbag control module after a crash event or repair.
- **SAS Reset (Steering Angle Sensor):** Calibrates the steering angle sensor.
- **Battery Reset (MVBM):** Resets the battery management system after battery replacement.

3 Hot Reset Services

New Generation of Intelligent One-Click Reset Equipment



Figure 5: One-Click Reset Services

This image highlights the three primary one-click reset functions available on the OBDSTAR P50: SAS Reset, Airbag Reset, and Battery Reset.

5.3 Advanced Diagnostic Functions

Access these functions from the main menu to perform in-depth diagnostics:

- **ECU Info:** Reads detailed information about the Electronic Control Unit.
- **Read/Eraser DTC:** Reads and clears Diagnostic Trouble Codes from various vehicle systems.
- **Read/Write EEPROM:** Allows reading and writing data to the EEPROM.
- **Read/Write FLASH:** Enables reading and writing data to the FLASH memory.
- **Erase Crash:** Clears crash data from the airbag module.
- **Write VIN:** Modifies or writes the Vehicle Identification Number.

5.4 Using the P004 Adapter

The P004 adapter is crucial for bench mode operations. Refer to the clear BENCH mode wiring diagram provided within the device software for specific connections. The P004 adapter supports simultaneous 6&14 and 3&11 CANBUS protocols, GM Single CAN, and K-line protocol. The P004 jumper allows for clearer and easier wiring with multiple connections.

5.5 Vehicle Coverage

The OBDSTAR P50 supports a wide range of vehicle brands. For a detailed and up-to-date list, please refer to the device's software or the official OBDSTAR website. The tool supports fuzzy search for ECU part numbers to assist in identification.

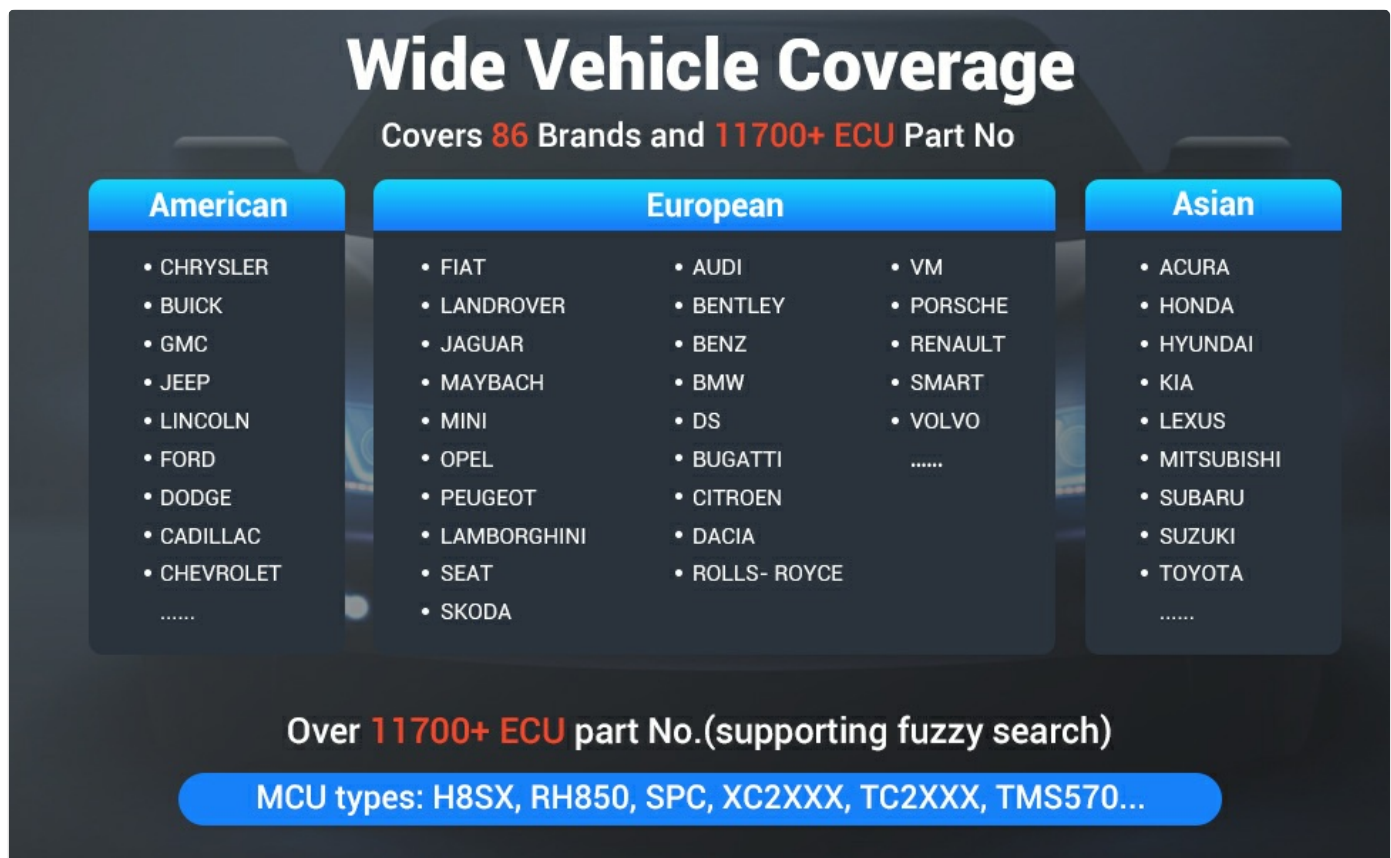


Figure 6: Example Vehicle Coverage

This image provides an example of the extensive vehicle coverage of the OBDSTAR P50, categorized by American, European, and Asian brands, and highlights support for over 11700+ ECU part numbers.

6. MAINTENANCE

- **Cleaning:** Use a soft, dry cloth to clean the device. Avoid abrasive cleaners or solvents.
- **Storage:** Store the device in a cool, dry place away from direct sunlight and extreme temperatures.
- **Software Updates:** Regularly connect the device to Wi-Fi and perform one-click software upgrades to ensure optimal performance and access to the latest features and vehicle coverage.
- **Battery Care:** To prolong battery life, avoid fully discharging the device frequently. Charge it regularly.

7. TROUBLESHOOTING

7.1 Fault Code Persistence

Issue: You clear a fault code, but it reappears immediately or shortly after.

Solution: Clearing a fault code only removes the code from the system's memory; it does not fix the underlying problem. If a fault code persists, it indicates that the hardware fault still exists in the vehicle. It is crucial to diagnose and repair the vehicle's physical issue first before attempting to clear the fault code again. Consult a qualified mechanic if you are unsure about the repair process.

7.2 Device Not Powering On

Solution: Ensure the device is fully charged. Connect the charger and wait for a few minutes before attempting to power it on again. If the issue persists, contact customer support.

7.3 Connection Issues

Solution: Verify that the main cable is securely connected to both the P50 device and the vehicle's OBD-II port. Check for any damage to the cable or connectors. Ensure the vehicle's ignition is on (or in the accessory position, depending on the vehicle).

8. SPECIFICATIONS

Feature	Detail
Model	P50
Operating System	Android 11.0
Processor	RK3128 Quad-Core
Display	5.0-inch Capacitive Touch Screen
Battery	2600mAh Rechargeable Polymer Lithium Battery
Connectivity	Wi-Fi
Item Weight	2.44 pounds
Package Dimensions	14.76 x 10.75 x 2.95 inches
Country of Origin	China

9. WARRANTY

OBDSTAR products typically come with a limited manufacturer's warranty. Please refer to the warranty card included with your product or visit the official OBDSTAR website for detailed warranty terms and conditions. Keep your purchase receipt as proof of purchase for warranty claims.

10. SUPPORT

For technical assistance, product inquiries, or remote help, please contact OBDSTAR customer support:

Email: xc360@yahoo.com

Online Support: Utilize the one-click remote help function available on your device for direct assistance from OBDSTAR technical staff.

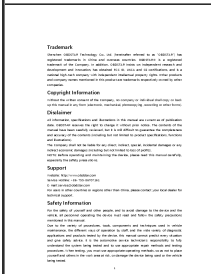
Service Hours: 24/7 customer service is available via email.





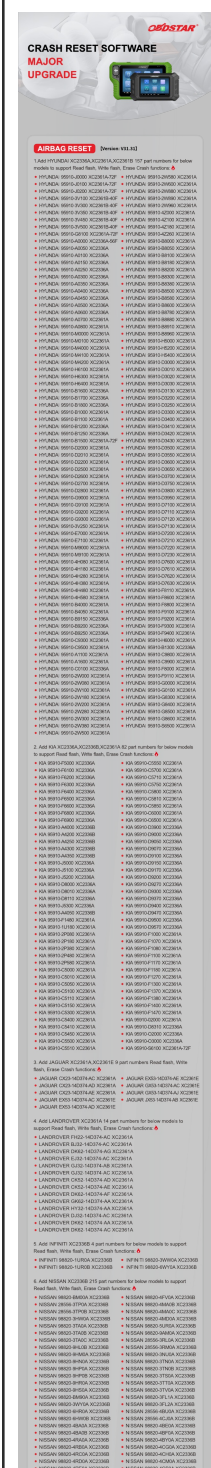
OBDSTAR P50 Airbag Reset Tool - Professional Diagnostic Device

Explore the OBDSTAR P50, a professional automotive diagnostic tool for airbag reset, MVBM reset, SAS reset, and advanced ECU programming. Learn about its specifications, functions, and the P004 adapter for bench mode operations.



OBDSTAR Intelligent Diagnostic Scanner User Manual

Comprehensive user manual for the OBDSTAR Intelligent Diagnostic Scanner, detailing setup, operation, features, safety precautions, and troubleshooting for automotive diagnostics.



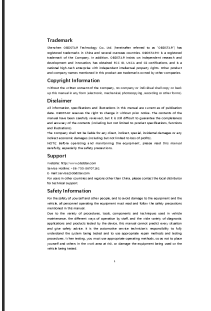
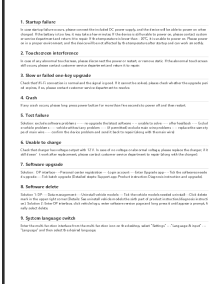
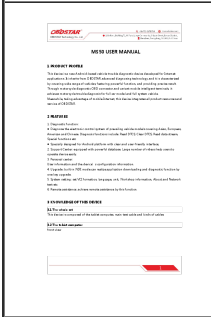
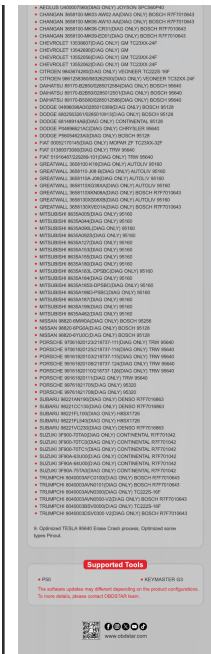
Add 177 part numbers for the below models to support airbag reset function. ▲

Comprehensive guide for the OBDSTAR 0529 Airbag Reset Tool, covering its features, operation, and specifications for automotive technicians.

- BARR 65.77-595055-01 BOGCH 95128
- BARR 65.77-6257213-01/0266011138 BOGCH 95128
- BARR 65.77-6224274-01 9512XETS12

Add 77 part numbers for the below models to support Readiness DTC function:

- AEDLUS 98029 2G50A(DAG ONLY) BOSCH R37F7010643
- AEDLUS 5X5 5824010B(DAG ONLY) BOSCH R37F7010643
- AEDLUS 5X18-5824115(DAG ONLY) BOSCH R37F7010643
- AEDLUS T5-5824345(DAG ONLY) BOSCH R37F7010643
- AEDLUS L504350 L20113(DAG ONLY) J250526 5205502643



[OBDSTAR MS50 User Manual: Advanced Motorcycle & Vehicle Diagnostic Tool](#)

Comprehensive user manual for the OBDSTAR MS50, an Android-based diagnostic device for motorcycles and vehicles. Covers product features, technical specifications, operation, troubleshooting, and safety guidelines from OBDSTAR Technology Co., Ltd.

[OBDSTAR P50 User Manual: Comprehensive Vehicle Diagnostic Tool Guide](#)

This user manual provides detailed information on the OBDSTAR P50, an advanced Android-based vehicle diagnostic tool. Learn about its features, technical specifications, operation, troubleshooting, safety precautions, and maintenance for professional automotive diagnostics.

[OBDSTAR X300 G3 Intelligent Diagnostic Scanner User Manual](#)

This user manual provides detailed instructions for operating the OBDSTAR X300 G3 intelligent diagnostic scanner, covering product features, safety guidelines, diagnostic procedures, settings, and support information for automotive professionals and enthusiasts.