



[Manuals.plus](#) /

> [AODK](#) /

> AODK 79-Inch L-Shaped Desk with 7 Drawers and Power Outlets User Manual

## AODK 7905

# AODK 79-Inch L-Shaped Desk with 7 Drawers and Power Outlets User Manual

Model: 7905

## INTRODUCTION

---

This manual provides comprehensive instructions for the assembly, operation, and maintenance of your AODK 79-inch L-Shaped Desk. Please read all instructions carefully before beginning assembly and retain this manual for future reference. This desk is designed to provide a functional workspace with integrated storage and power solutions.

## SAFETY INFORMATION

---

Please observe the following safety guidelines to ensure safe use and prevent damage to the product or injury.

- Always assemble the desk according to the provided instructions.
- Ensure the desk is properly anchored to the wall or floor to prevent tipping, especially when using the top shelves or when the desk is fully loaded.
- Be cautious when using the built-in power outlets and follow all electrical safety guidelines. Do not overload the outlets.
- Do not overload the desk with excessive weight, as this could compromise its stability. Refer to the specifications section for weight limits.
- Keep small parts and assembly tools away from children during assembly.

## SETUP AND ASSEMBLY

---

The AODK L-Shaped Desk features a reversible design, allowing you to configure it for either a left or right corner setup. Assembly requires two people for optimal safety and ease. Please note that while some tools may be included, it is recommended to have a standard set of household tools available.

### Assembly Steps Overview:

1. Unpack all components and verify against the parts list (refer to the separate assembly guide for detailed list).
2. Identify the main frame components and begin assembling the desk frame using the provided hardware.

3. Attach the desk panels, ensuring all connections are secure.
4. Install the monitor stand and the integrated power outlets.
5. Assemble and insert the file drawers and fabric storage drawers.
6. Attach the adjustable foot pads to ensure stability on uneven floors.



Figure 1: Reversible L-Shaped Desk Configuration. This image demonstrates the flexibility of the desk's design, allowing it to be assembled with the longer section on either the left or right side to fit your space.

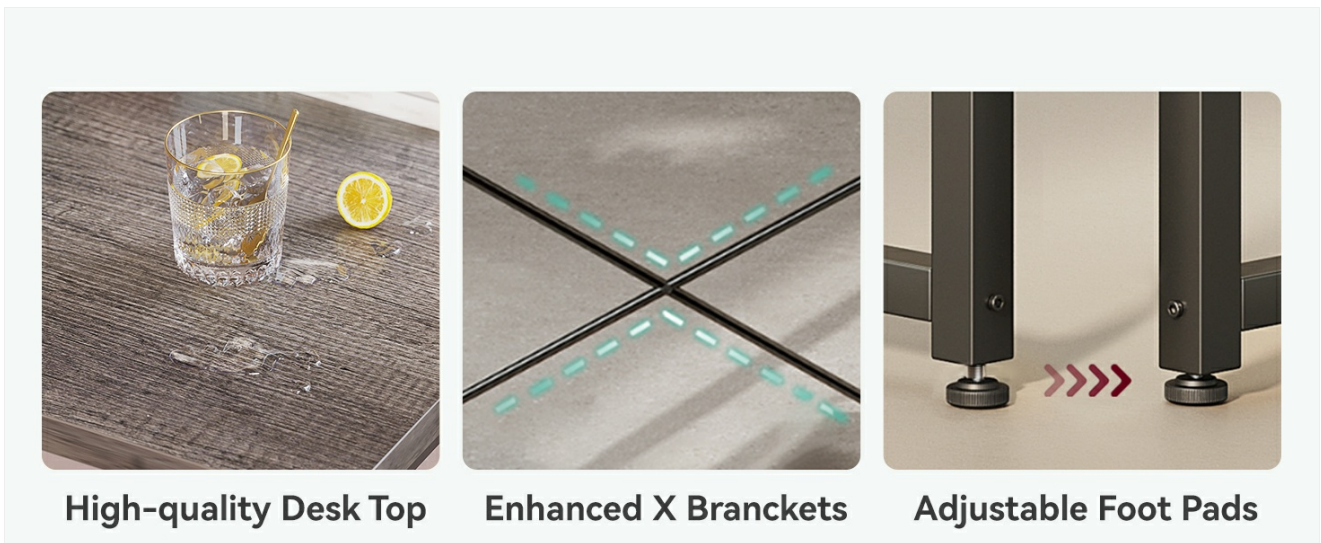


Figure 2: Desk Construction Details. This image highlights key structural features including the durable desk surface, reinforced X-shaped brackets for enhanced stability, and adjustable foot pads for leveling the desk on uneven floors.

For detailed step-by-step instructions, please refer to the separate assembly guide included in your product packaging.

## OPERATING INSTRUCTIONS

---

### Integrated Power Outlets

Your desk is equipped with two built-in power outlets, each featuring 3 AC outlets (125V/12A) and 2 USB ports (5V/2A). These are designed for convenient charging and powering of your electronic devices.

- Connect the desk's main power cord (6.6-foot length) to a standard wall outlet.
- Plug your devices into the available AC outlets or USB ports.
- Do not exceed the maximum electrical load specified for the outlets.



Figure 3: Built-in Power Outlets. This image displays the two integrated power strips, each offering 3 AC outlets and 2 USB ports, providing convenient access to power for your electronic devices directly on the desk surface.

## LED Lighting System

The desk includes an LED lighting system with 10 color variations and 10 lighting modes. This system allows for adjustable brightness and color settings to suit your preference.

- Connect the LED light strip to a USB power source (e.g., one of the desk's USB ports or a separate adapter).
- Use the inline controller to cycle through the 10 color options and 10 lighting modes.
- Adjust the brightness as desired to create a comfortable working or gaming ambiance.



Figure 4: RGB LED Lights. This image illustrates the LED light strip and its controller, highlighting the 10 available lighting modes and 10 color variations for customizable ambient lighting.

## Monitor Stand

The integrated monitor stand elevates your display, promoting a proper sitting posture and reducing neck strain. It can accommodate multiple monitors or other desktop accessories.

## Long Monitor Stand

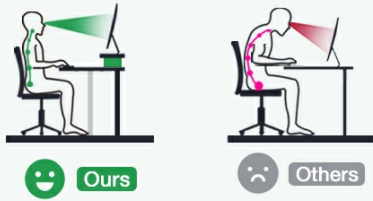


Figure 5: Ergonomic Monitor Stand. This image demonstrates how the elevated monitor stand helps maintain proper sitting posture, contrasting it with poor posture when a monitor is placed directly on the desk. It also shows the spacious design of the monitor stand.

## Storage Drawers and Shelves

The desk includes 7 storage drawers: 3 traditional drawers located beneath the desktop and 4 tiers of fabric storage drawers. Additionally, there are 2 tiers of open shelves on both sides and a dedicated CPU stand.

- Utilize the drawers for organizing documents, office supplies, and personal items.
- The open shelves are suitable for printers, books, decorative items, or other accessories.
- Place your computer tower on the CPU stand to protect it from dust and moisture.

## MAINTENANCE

---

Regular maintenance will help prolong the life and appearance of your AODK desk.

- **Cleaning:** Wipe surfaces with a soft, damp cloth. Avoid harsh chemicals or abrasive cleaners that may damage the engineered wood finish.
- **Spills:** Immediately wipe up any spills to prevent water damage or staining.
- **Hardware:** Periodically check all screws and fasteners to ensure they are tight. Retighten if necessary.
- **Electrical Components:** Ensure the power cord and outlets are free from damage. Do not attempt to repair electrical components yourself.
- **Fabric Drawers:** Clean fabric drawers with a mild detergent and damp cloth, allowing them to air dry completely.

## TROUBLESHOOTING

---

If you encounter issues with your desk, refer to the following common troubleshooting tips:

- **Desk is unstable/wobbly:** Ensure all assembly screws are tightened. Adjust the leveling foot pads on the bottom of the legs to compensate for uneven floors.
- **Power outlets not working:** Check if the desk's main power cord is securely plugged into a functional wall outlet. Verify that the wall outlet itself is receiving power. Do not overload the outlets.
- **LED lights not turning on:** Ensure the LED strip is properly connected to a USB power source. Check the inline controller for power and mode settings.
- **Drawers are stiff or not closing properly:** Check for any obstructions in the drawer slides. Ensure the drawer slides are correctly installed and aligned.

If problems persist after attempting these solutions, please contact customer support.

## SPECIFICATIONS

---

Feature	Detail
Brand	AODK
Model Name	7905
Model Number	B02022101005UUPNSUQPN3166
Shape	L-Shape
Product Dimensions (D x W x H)	57.3" x 78.5" x 35.7"
Color	Grey Oak
Top Material Type	Engineered Wood
Base Material	Alloy Steel
Number of Drawers	7 (3 file drawers, 4 fabric storage drawers)
Number of Open Shelves	4 (2 tiers on each side)
Special Feature	Reversible Design, Built-in Power Outlets, LED Lighting, Monitor Stand
Power Outlets	2 units, each with 3 AC outlets (125V/12A) & 2 USB ports (5V/2A)
Power Cord Length	6.6 feet
LED Lighting	10 colors, 10 lighting modes, adjustable brightness
Item Weight	82.9 Pounds
Assembly Required	Yes
Recommended Assembly Persons	2
UPC	850064516098
ASIN	B0D4V8RW82

## WARRANTY AND SUPPORT

---

AODK stands behind the quality of its products. For specific warranty information, please refer to the warranty card included with your purchase or visit the official AODK website.

If you require assistance with assembly, have questions about product features, or need to report a damaged or missing part, please contact AODK Customer Support through the retailer where you purchased the product or via the contact information provided on the AODK brand store page.

**Online Support:** [AODK Store on Amazon](#)

