

TECKNET 2 Receiver+1 Button

TECKNET Wireless Doorbell System User Manual

MODEL: 2 RECEIVER+1 BUTTON

Brand: TECKNET

1. INTRODUCTION

This manual provides instructions for the installation, operation, and maintenance of your TECKNET Wireless Doorbell System. This system includes one wireless transmitter (doorbell button) and two plug-in receivers (chimes). It features a 400-meter wireless range, IP66 waterproof rating for the transmitter, 60 selectable chimes, 5 adjustable volume levels, and an RGB light indicator.



Image: The TECKNET Wireless Doorbell System showing one transmitter and two receivers.

2. PACKAGE CONTENTS

Verify that all items are present in your package:

- 1 × Transmitter (Doorbell Button)
- 2 × Plug-in Receivers (Chimes)
- 1 × Installation Toolkit (screws, anchors, adhesive tape)
- 1 × User Manual (this document)

3. PRODUCT FEATURES

- **Plug & Play Receivers:** The receivers plug directly into a standard electrical outlet, requiring no batteries for operation.
- **IP66 Waterproof Transmitter:** The doorbell button is designed to withstand various weather conditions, operating reliably in temperatures from -20°C to 60°C.



Image: The IP66 waterproof transmitter shown with water droplets, indicating its weather resistance.

- **Extended Wireless Range:** Enjoy a wireless range of up to 400 meters (1300 feet) in open areas, ensuring reliable signal transmission throughout your home or property.

400M/1300Ft

2 x Receivers, wider range of use



Image: Illustration of the doorbell system covering a large house and yard, demonstrating the 400-meter wireless range.

- **60 Chimes and 5 Volume Levels:** Choose from 60 distinct melodies and adjust the volume to one of 5 levels, ranging from 0dB to 110dB.



Image: A child and adult singing next to a plug-in receiver, highlighting the 5 adjustable volume levels and 60 chimes.

- **RGB Light Indicator:** The receiver features an RGB light that flashes when the doorbell is pressed, providing a visual alert.
- **Silent Mode:** Activate silent mode to receive visual alerts (RGB light flash) without an audible chime, ideal for quiet environments or when a baby is sleeping.



Silent Mode

Specialized for baby
sleeping and nap



Image: A sleeping baby next to a plug-in receiver, illustrating the silent mode feature with only the RGB light flashing.

- **Memory Function:** The system automatically restores your last selected volume and chime settings after a power outage.

Memory Function

Automatically restore volume and ringtone settings



Image: A plug-in receiver in a bedroom, showing a graphic representation of the memory function for volume and ringtone settings.

4. SETUP AND INSTALLATION

4.1 Transmitter (Doorbell Button) Installation

The transmitter can be installed using either adhesive tape or screws.

1. **Adhesive Installation:** Clean the mounting surface thoroughly. Peel off one side of the double-sided adhesive tape and attach it to the back of the transmitter. Peel off the other side and firmly press the transmitter onto the desired location (e.g., door frame, wall).
2. **Screw Installation:** Open the back cover of the transmitter. Mark the positions for drilling holes. Drill two holes, insert the provided anchors, and then secure the transmitter's back plate with the screws. Snap the transmitter onto the secured back plate.

Simple Installation

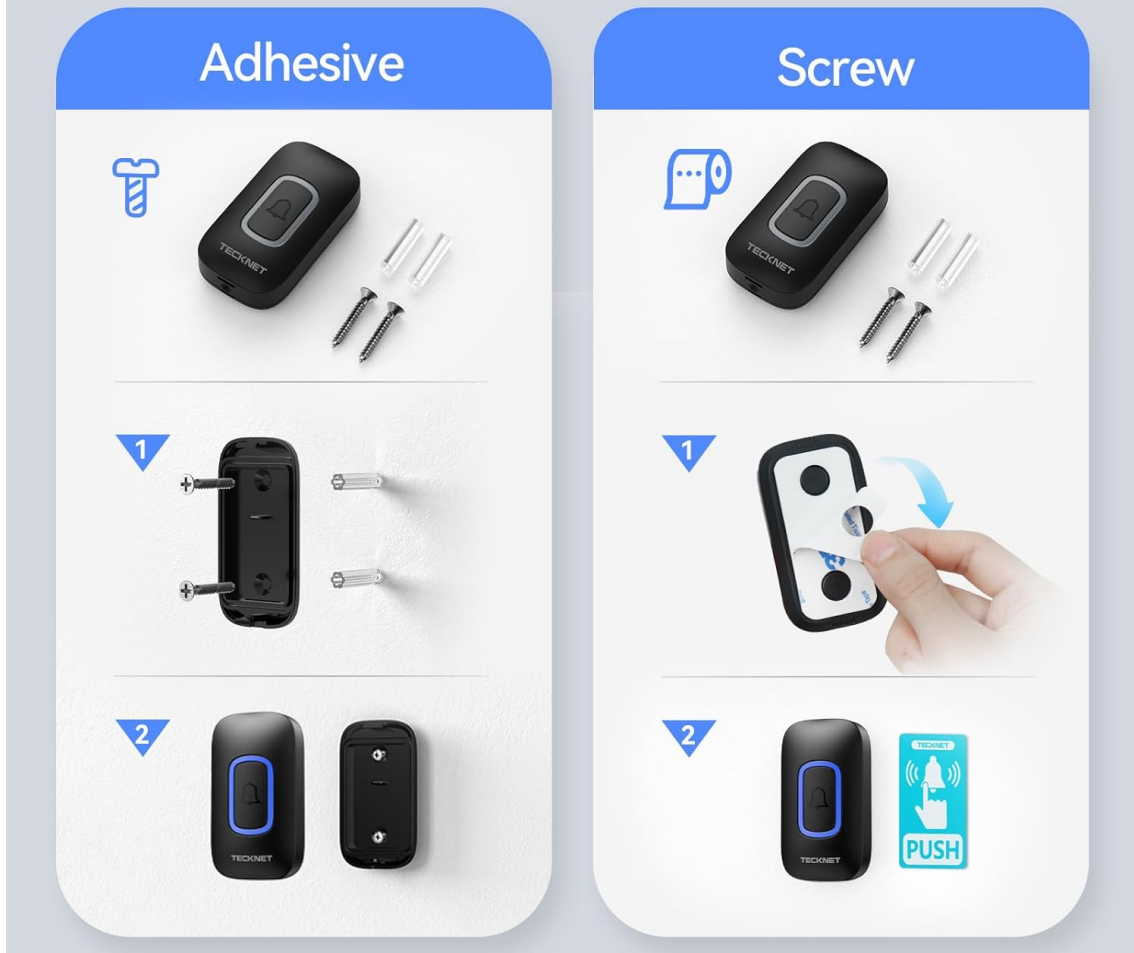


Image: A diagram illustrating both adhesive and screw installation methods for the doorbell transmitter.

4.2 Receiver Setup

Plug the receiver(s) into any standard electrical outlet within the wireless range of the transmitter. Ensure the outlet is easily accessible and not obstructed.

5. OPERATING INSTRUCTIONS

5.1 Changing Chime

To select a chime:

1. Press the "Chime Selection" button on the receiver to cycle through the available 60 melodies.
2. Once you hear your desired chime, stop pressing the button. The chime will be saved automatically due to the memory function.

5.2 Adjusting Volume

To adjust the volume:

1. Press the "Volume" button on the receiver to cycle through the 5 volume levels.
2. The volume levels range from silent (0dB) to maximum (110dB).

5.3 Silent Mode

To activate silent mode, press the "Volume" button until the volume reaches 0dB. In this mode, the receiver will only flash its RGB light when the doorbell button is pressed, providing a visual notification without sound.

5.4 Pairing Transmitter with Receiver(s)

The transmitter and receivers are pre-paired at the factory. If re-pairing is needed or if you add additional transmitters/receivers:

1. Plug in the receiver.
2. Press and hold the "Volume" button on the receiver for approximately 5 seconds until the RGB light flashes rapidly. This indicates pairing mode.
3. Immediately press the transmitter button once. The receiver will chime or flash its light to confirm successful pairing.
4. If pairing multiple transmitters or receivers, repeat the process for each unit.

6. MAINTENANCE

6.1 Cleaning

Wipe the doorbell transmitter and receivers with a soft, dry cloth. Do not use abrasive cleaners or solvents.

6.2 Transmitter Battery Replacement

The transmitter uses a CR2032 lithium-ion button cell battery. When the doorbell button stops working or its range decreases significantly, the battery may need replacement.

1. Carefully open the back cover of the transmitter using a small screwdriver or coin.
2. Remove the old CR2032 battery.
3. Insert a new CR2032 battery with the positive (+) side facing up.
4. Close the back cover securely.
5. Test the doorbell to ensure it functions correctly. If not, re-pair the transmitter with the receiver(s) as described in Section 5.4.

7. TROUBLESHOOTING

- **Doorbell not ringing:**

- Ensure the receiver is properly plugged into a working electrical outlet.
- Check if the receiver is in silent mode (volume set to 0dB). Adjust the volume if necessary.
- Replace the battery in the transmitter if it has been in use for an extended period (refer to Section 6.2).
- Re-pair the transmitter with the receiver(s) (refer to Section 5.4).

- **Short wireless range:**

- Ensure there are no significant metal objects, thick walls, or other electronic devices directly between the transmitter and receiver that could interfere with the signal.
- Relocate the receiver to a more central position or closer to the transmitter.
- Replace the transmitter battery.

- **Receiver RGB light not flashing:**

- Ensure the receiver is powered on and functioning.
- If the doorbell rings but the light does not flash, contact customer support.

8. SPECIFICATIONS

Feature	Detail
Model	2 Receiver+1 Button
Wireless Range	Up to 400m (1300ft) in open areas
Transmitter Waterproof Rating	IP66
Operating Temperature	-20°C to 60°C
Chimes	60 selectable melodies
Volume Levels	5 levels (0dB to 110dB)
Receiver Power	Plug-in (AC powered)
Transmitter Battery	CR2032 Lithium-Ion (included)
Item Weight	8.1 ounces
Package Dimensions	6.61 x 3.46 x 2.44 inches

9. WARRANTY AND SUPPORT

TECKNET products are designed for reliability and performance. This product comes with a standard warranty. Customers who register for membership may receive an extended warranty of up to 36 months.

For technical support, warranty claims, or further assistance, please contact TECKNET customer service through the official website or your purchase platform. Please have your model number and purchase date available when contacting support.

TECKNET: Technology Enhances Life