



[Manuals.plus](#) /

› [BIKECOMM](#) /

› BIKECOMM SALUT Motorcycle Bluetooth Intercom Headset User Manual

BIKECOMM Salut_AMZ

BIKECOMM SALUT Motorcycle Bluetooth Intercom Headset User Manual

Model: Salut_AMZ

[Introduction](#)

[Components](#)

[Setup](#)

[Operation](#)

[Maintenance](#)

[Troubleshooting](#)

[Specifications](#)

[Warranty & Support](#)

1. INTRODUCTION

This manual provides instructions for the installation, operation, and maintenance of your BIKECOMM SALUT Motorcycle Bluetooth Intercom Headset. Please read this manual thoroughly before use to ensure proper functionality and safety.



Image: The BIKECOMM SALUT intercom unit, a compact black device with three control buttons and a glowing blue indicator light.

2. PACKAGE CONTENTS

Verify that all items listed below are included in your package:

- Intercom Headset
- Mini USB speaker & microphone cable
- USB to Mini USB charging cable
- Half-face helmet boom microphone
- Full-face helmet boom microphone
- SALUT Fixture
- Cable Protection Cover & Adhesive Pad
- Alcohol cleaning pad
- 3M adhesive pad for fixture

- Speaker Velcro Adjustment EVA Pad
- Speaker Velcro pad
- Velcro for Half-Face Helmet Boom Microphone
- Velcro for Full-Face Helmet Wired Microphone
- User Manual
- Thank You Card



Image: A flat lay of all components included in the BIKECOMM SALUT package, including the intercom unit, various microphones, speakers, mounting hardware, and cables.

3. SETUP AND INSTALLATION

3.1. Charging the Device

Before initial use, fully charge the SALUT intercom unit. Connect the provided USB charging cable to the unit and a standard 5V USB power adapter (not included). A full charge typically takes approximately 1.5 hours. Avoid using fast chargers as they may damage the battery.

3.2. Mounting the Intercom Unit

The SALUT unit can be mounted to your helmet using the provided fixture and 3M adhesive pad. Clean the helmet surface thoroughly with the alcohol cleaning pad before applying the adhesive. Ensure the mounting location allows for easy access to controls and proper cable routing.

Installation Instructions

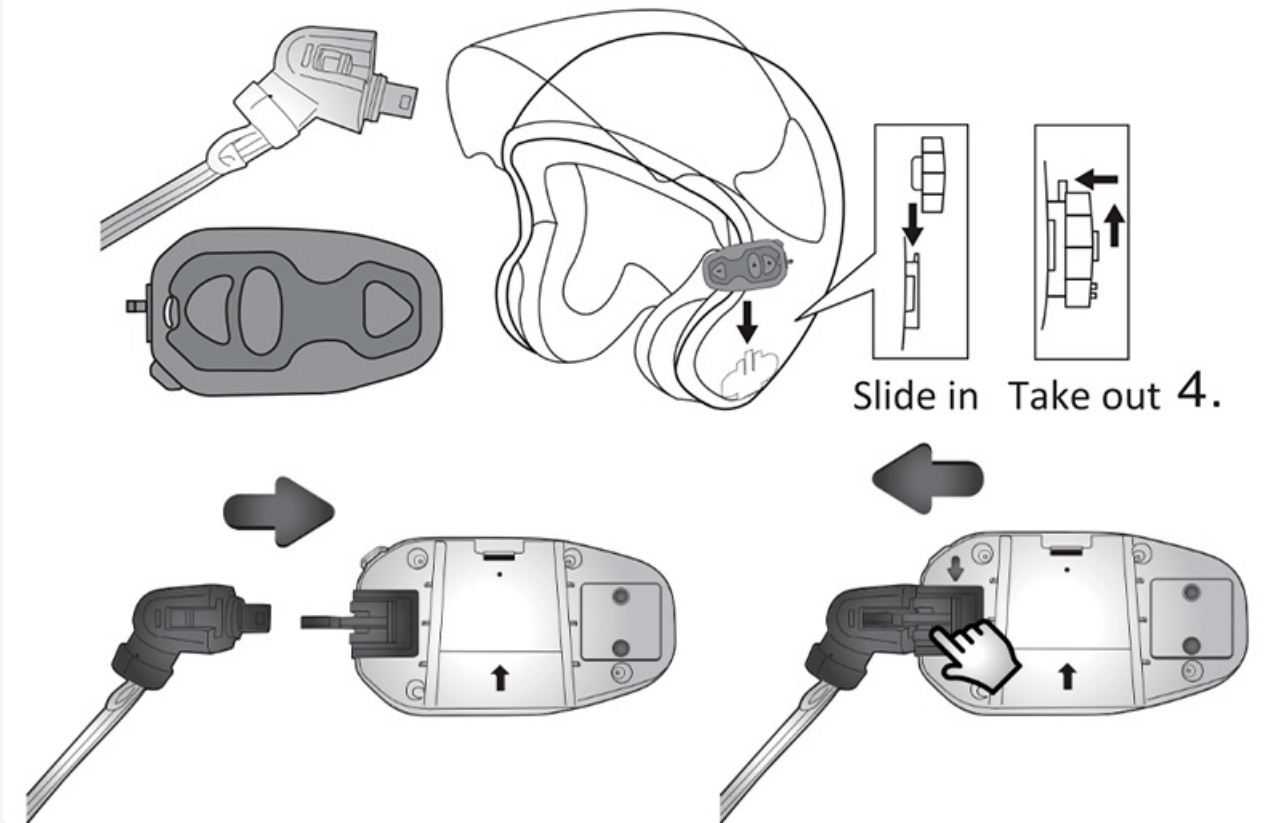


Image: A diagram illustrating the steps for installing the intercom unit onto a helmet, showing how to slide the unit into its fixture and connect the speaker/microphone cable.

3.3. Speaker and Microphone Installation

Select the appropriate microphone for your helmet type:

- **Full-face helmets:** Use the wired button microphone.
- **Open-face or flip-face (convertible) helmets:** Use the boom microphone.

Install the speakers into the helmet's ear pockets using the Velcro pads. If needed, use the EVA pads for adjustment to ensure a comfortable fit and optimal sound. Route all cables neatly within the helmet lining to prevent interference or discomfort. Connect the speaker and microphone cable to the intercom unit.

Two Wearing Options

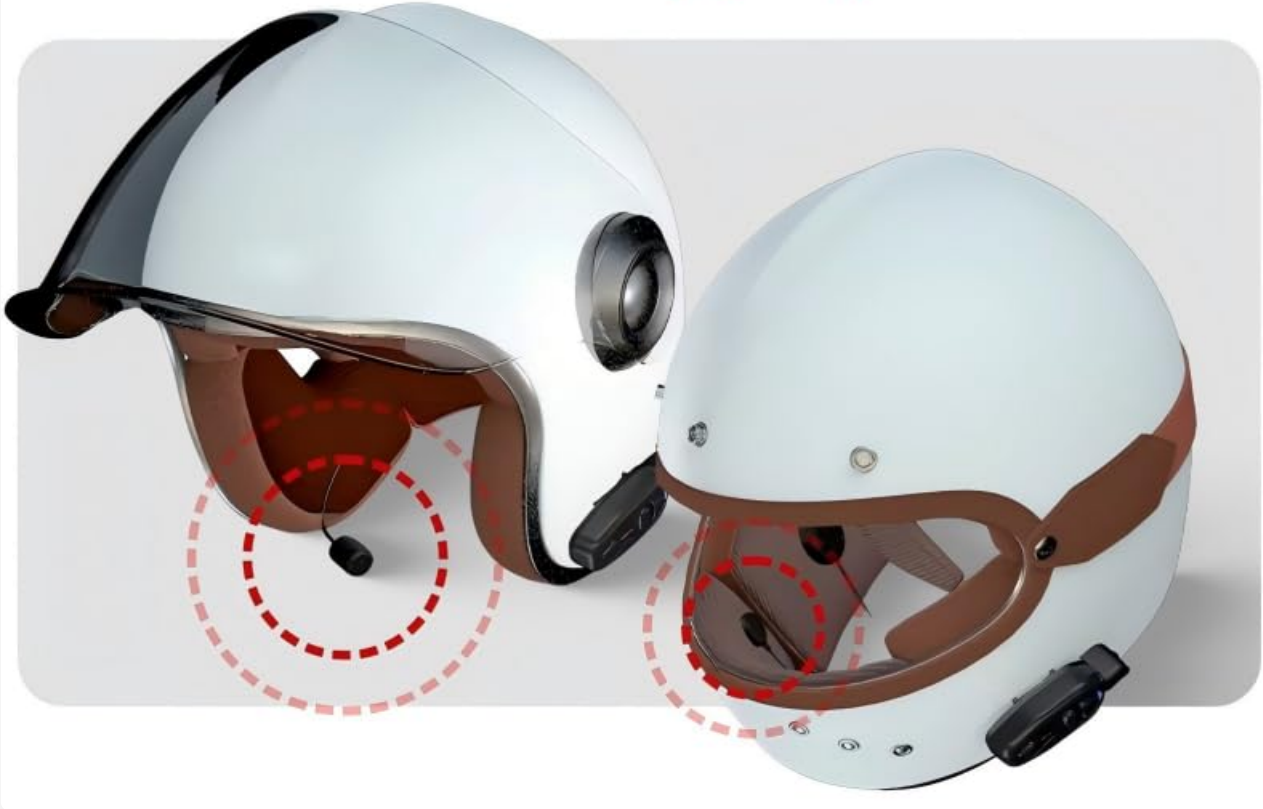


Image: Two helmets demonstrating the different microphone installation options: a boom microphone for an open-face helmet and a wired microphone for a full-face helmet.

3.4. Initial Bluetooth Pairing

To pair your SALUT unit with a mobile device:

1. Ensure the SALUT unit is powered off.
2. Press and hold the power button until the LED indicator flashes red and blue, indicating pairing mode.
3. On your mobile device, enable Bluetooth and search for available devices.
4. Select "BIKECOMM SALUT" from the list.
5. Once connected, the LED indicator will show a steady blue light.

For intercom pairing with another SALUT unit, refer to the specific instructions in the 'Operating Instructions' section.

Upgraded Bluetooth & 40mm Speakers Bring Ultra-high Quality Sound



Image: Two motorcycle helmets, one pink and one black, each equipped with a BIKECOMM SALUT intercom unit, illustrating the universal pairing capability for various helmet types and brands.

4. OPERATING INSTRUCTIONS

4.1. Basic Controls

The SALUT unit features three primary buttons for control:

- **Volume Up/Down:** The front button extends out and can be pressed up or down to adjust volume.
- **Multi-function Button (A):** Used for various functions depending on context (e.g., answering calls, playing/pausing music).
- **Power/Intercom Button:** Used to power on/off and initiate/end intercom calls.

4.2. Intercom Communication

The SALUT supports intercom communication with other SALUT units and compatible third-party brands up to a range of 1000 meters (0.62 miles). To initiate an intercom call, ensure both units are paired and within range, then press the designated intercom button.



BIKECOMM SALUT

Motorcycle Helmet Bluetooth Headset

Ride freely, stay connected.

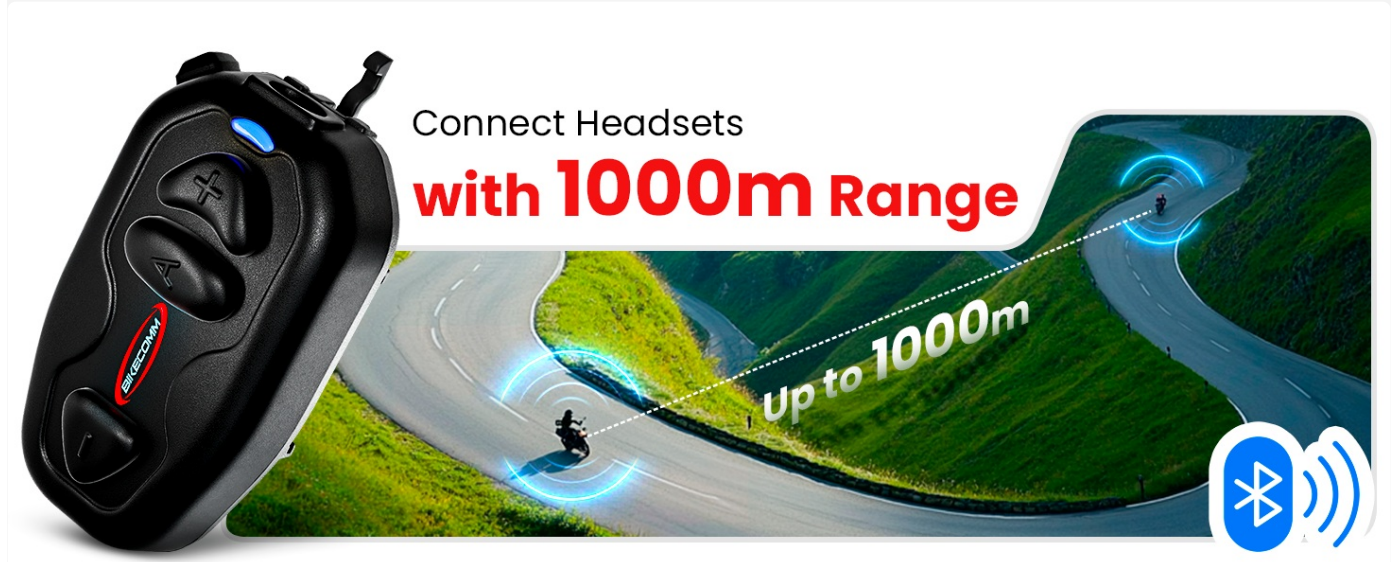
- 1000m Connection
- Bluetooth 5.0
- Noise Cancellation
- IP67 Waterproof
- Audio Mixer
- 40mm HI-FI Speaker

The image shows a person wearing a silver motorcycle helmet with a blue glowing intercom system. The background is a scenic mountain landscape. Below the main text are six red icons representing the product's features: a distance icon for 1000m connection, a Bluetooth symbol, a noise cancellation waveform, a water drop for IP67 waterproofing, a speaker icon for audio mixer, and a speaker icon for 40mm HI-FI speaker.

Image: A graphic depicting two motorcycles on a winding road, with a curved line indicating a 1000-meter communication range between their intercom units.

4.3. Music Sharing

The SALUT allows you to share music with a paired riding partner. Once connected via intercom, activate the music sharing feature (refer to specific button combinations in the full manual) to stream audio to both headsets.



Connect Headsets with 1000m Range

Up to 1000m

The image features a large black intercom unit on the left with a blue light. The background is a scenic view of a winding road through green hills. A dashed white line with a blue glow indicates a 1000m range between two motorcycles on the road. A smartphone in the center displays a music player interface. In the bottom right corner, there are Bluetooth and intercom icons.

Image: Two couples on motorcycles, with a smartphone displaying a music player interface in the center, illustrating the music sharing capability between riders.

4.4. Audio Multitasking

The SALUT features seamless audio mixing technology, allowing you to listen to music, receive GPS navigation instructions, make/answer phone calls, and use voice prompts while simultaneously engaging in intercom conversations. The system automatically adjusts volume levels to ensure important audio cues are not missed.

Wide range of applications

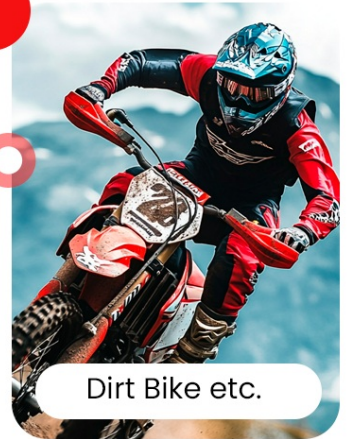
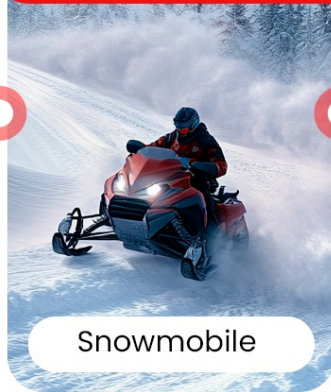


Image: A graphic showing three icons representing 'Talk + Navigation', 'Talk + Music', and 'Music Sharing', illustrating the seamless integration of multiple audio functions while riding.

4.5. Voice Assistant

Access your smartphone's voice assistant (e.g., Siri) directly through the SALUT unit. Refer to the full manual for specific button presses to activate this feature.



Image: A motorcycle rider with an intercom unit, accompanied by a microphone icon, indicating the built-in voice assistant feature.

4.6. Noise Cancellation

The SALUT employs CVC & DSP smart chip technology and a windproof microphone to effectively reduce wind, engine, and other background noise. This allows for clear communication even at speeds up to 100 miles per hour.

Seamless Integration

Simultaneous Music, Answer or Voice Dialing, GPS Navigation Instructions, Voice Prompts, Bluetooth Hands-free and Wireless Streaming Music (A2DP)



Image: A graphic showing the BIKECOMM SALUT unit with sound waves emanating from it, illustrating the advanced noise cancellation technology that reduces wind noise at high speeds.

4.7. Waterproof Design

The SALUT unit is designed with IP67 waterproof technology, ensuring reliable performance in various weather conditions, including rain.



Image: A motorcycle helmet with the intercom unit attached, partially submerged in water, highlighting its IP67 waterproof rating.

5. MAINTENANCE

To ensure the longevity and optimal performance of your BIKECOMM SALUT headset, follow these maintenance guidelines:

- **Cleaning:** Wipe the unit with a soft, damp cloth. Avoid using harsh chemicals or abrasive cleaners.
- **Storage:** When not in use for extended periods, store the unit in a cool, dry place. Ensure the battery is partially charged (around 50%) before storage to prevent deep discharge.
- **Battery Care:** Recharge the battery regularly, even if the unit is not frequently used, to maintain battery health. Avoid leaving the unit fully discharged for long durations.
- **Cable Inspection:** Periodically check all cables and connections for signs of wear or damage. Ensure wires are not pinched during helmet installation.

6. TROUBLESHOOTING

If you encounter issues with your BIKECOMM SALUT headset, refer to the following common problems and solutions:

- **Device not powering on:**
Ensure the battery is charged. Connect the unit to a power source and attempt to power on after a few minutes.
- **Unable to pair with phone/intercom:**
Ensure the unit is in pairing mode (flashing red and blue LED). Check that Bluetooth is enabled on your phone. For intercom pairing, ensure both units are in pairing mode and within range. Try resetting both devices and attempting pairing again.
- **Static or poor audio quality:**
Check all cable connections, especially the speaker and microphone cables, to ensure they are securely plugged in and not damaged or pinched. Ensure speakers are positioned correctly over your ears. Reduce distance between intercom units if experiencing static during group communication.
- **Short battery life:**
Ensure the unit is fully charged before use. Battery performance can be affected by extreme temperatures. Avoid using fast chargers, as they can degrade battery health over time.
- **Voice assistant not responding:**
Ensure your phone is connected and the voice assistant feature is enabled on your device. Speak clearly into the microphone.

If the problem persists, contact BIKECOMM customer support for further assistance.

7. SPECIFICATIONS

Feature	Detail
Model Name	Salut_AMZ(Single)
Brand	BIKECOMM
Connectivity Technology	Wireless (Bluetooth 5.0)
Wireless Communication Technology	Bluetooth
Noise Control	Active Noise Cancellation (CVC & DSP)
Water Resistance Level	Waterproof (IP67)
Audio Driver Size	40 Millimeters
Audio Driver Type	Dynamic Driver
Frequency Range	20 Hz - 20,000 Hz
Impedance	12 Ohm
Charging Time	1.5 Hours
Intercom Talk Time	Up to 18 hours
Music Playing Time	Up to 25 hours

Standby Time	Over a week
Battery	1 Lithium Ion battery (included)
Control Type	Button Control
Special Features	Built-In Voice Assistant, Microphone Included, Noise Isolation, Rechargeable Battery, Touch Control
Item Weight	10.7 ounces

8. WARRANTY AND SUPPORT

8.1. Warranty Information

Please refer to the product packaging or the official BIKECOMM website for detailed warranty information regarding your SALUT Motorcycle Bluetooth Intercom Headset. Keep your purchase receipt as proof of purchase for any warranty claims.

8.2. Customer Support

For technical assistance, troubleshooting not covered in this manual, or warranty inquiries, please contact BIKECOMM customer support through their official website or the contact information provided with your product.