

[Manuals.plus](#) /

> [Gobricks](#) /

> Gobricks GDS-820-052 Hinge Plate 1x2 Locking with 1 Finger Instruction Manual

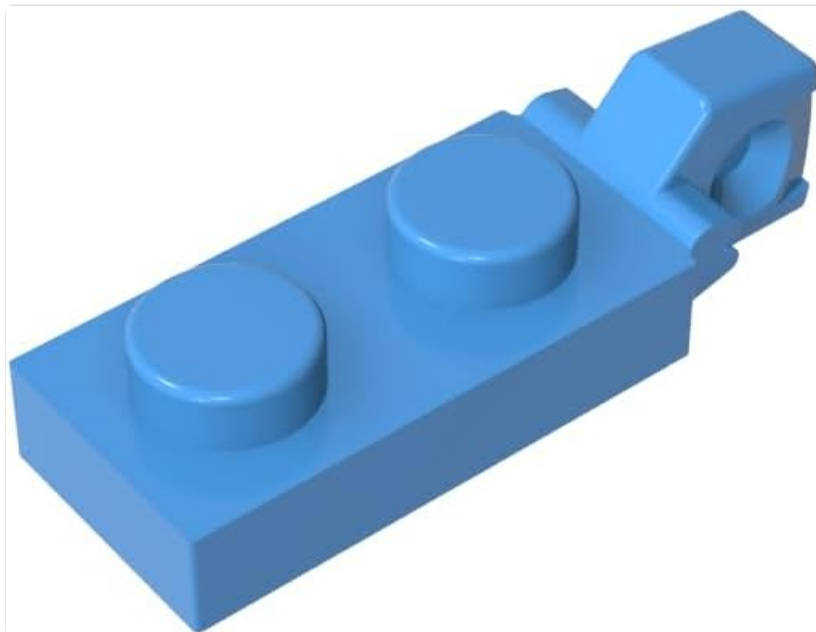
## Gobricks GDS-820-052

# Gobricks GDS-820-052 Hinge Plate 1x2 Locking with 1 Finger Instruction Manual

Model: GDS-820-052

## 1. PRODUCT OVERVIEW

The Gobricks GDS-820-052 Hinge Plate 1x2 Locking with 1 Finger is a specialized building block component designed for intricate constructions. This plastic element features a 1x2 plate with two studs and a locking hinge finger on one end, allowing for rotational connections without a groove. It is engineered for compatibility with major brick brands, facilitating diverse and stable building projects.



**Image 1.1:** A single Gobricks GDS-820-052 Hinge Plate 1x2 Locking with 1 Finger, shown in medium blue. The image highlights the two studs on the plate and the distinct locking finger mechanism at one end, designed for secure rotational connections.

## 2. SPECIFICATIONS

<b>Model Number</b>	GDS-820-052
<b>Part Name</b>	Hinge Plate 1 x 2 Locking with 1 Finger On End, without Groove
<b>Material</b>	Plastic
<b>Dimensions</b>	1x2 stud equivalent (standard brick dimensions)
<b>Recommended Age</b>	18 years and up
<b>Color (Current Variant)</b>	Medium Blue (052)

### 3. USAGE INSTRUCTIONS

---

#### 3.1. Connecting the Hinge Plate

- 1. Identify Connection Points:** Locate a compatible hinge brick or element with a bar or pin connection point. The hinge plate features a single finger designed to interlock with such elements.
- 2. Align Components:** Position the hinge plate's finger over the receiving bar or pin of the other brick.
- 3. Secure Connection:** Gently press the hinge plate onto the receiving element until a secure connection is felt. The locking mechanism ensures stability.
- 4. Test Rotation:** Once connected, test the rotational movement of the hinge. The design allows for smooth articulation.

#### 3.2. Integrating into Builds

- Use the two studs on the plate to attach it securely to other standard building blocks.
- The hinge mechanism is ideal for creating movable parts such as doors, wings, or adjustable structures in your models.
- Ensure that the connected elements do not obstruct the hinge's movement range.

### 4. COMPATIBILITY

---

The Gobricks GDS-820-052 Hinge Plate is designed for broad compatibility with various building block systems. It is specifically comparable to and compatible with original part numbers:

- 44301
- 44301a
- 44301b

This hinge plate integrates seamlessly with Technic, Liftarm, Modified, and standard Plate brick types from major building block brands, allowing for versatile construction possibilities.

### 5. MAINTENANCE

---

To ensure the longevity and optimal performance of your Gobricks Hinge Plates, follow these simple maintenance guidelines:

- **Cleaning:** Clean the blocks with a soft cloth dampened with mild soap and water. Avoid harsh

chemicals or abrasive materials, as these can damage the plastic.

- **Drying:** Allow the blocks to air dry completely before storage or reassembly.
- **Storage:** Store blocks in a cool, dry place away from direct sunlight to prevent discoloration or material degradation.
- **Handling:** Avoid excessive force when connecting or disconnecting blocks to prevent stress on the plastic and hinge mechanism.

## 6. TROUBLESHOOTING

---

If you encounter issues while using the Gobricks GDS-820-052 Hinge Plate, consider the following:

- **Loose Connection:** Ensure that the hinge finger is fully engaged with the receiving bar or pin. Check both components for any debris or damage that might prevent a secure fit.
- **Stiff Movement:** If the hinge feels stiff, ensure no other bricks are obstructing its movement. A small amount of silicone-based lubricant (specifically designed for plastics) can be applied sparingly, but generally, these parts should move freely.
- **Incompatibility:** Verify that the components you are trying to connect are indeed compatible. While Gobricks are designed for broad compatibility, some non-standard or heavily worn parts may not fit perfectly.
- **Damaged Part:** Inspect the hinge plate and connecting parts for any cracks, bends, or broken elements. Damaged parts should be replaced.

## 7. WARRANTY AND SUPPORT

---

For specific warranty information or product support, please refer to the retailer or manufacturer's official channels. As a building block component, individual warranty terms may vary. General support for Gobricks products can often be found through their official website or authorized distributors.

For further assistance, you may contact the seller, Eske Kouri, through the platform where the product was purchased.