

amazon basics AB-SB20D

amazon basics SB20D 20W Bluetooth Soundbar User Manual

Model: AB-SB20D

1. INTRODUCTION

This manual provides essential instructions for the safe and efficient operation of your amazon basics SB20D 20W Bluetooth Soundbar. Please read this manual thoroughly before using the product and retain it for future reference.

The amazon basics SB20D is a wireless 20W Bluetooth soundbar speaker designed to deliver an immersive audio experience with powerful 2X bass. It features Bluetooth 5.3 connectivity for stable streaming, and offers versatile compatibility with AUX, Micro SD, and USB connections. Its portable design and long-lasting battery make it suitable for various entertainment setups.

amazon basics

Immerse Yourself in Powerful Sound, Anywhere.



Easy
Connectivity



Powerful
Bass



Long Playback
Time



Superior
Sound Quality



2400mAh Li-ion
rechargeable battery

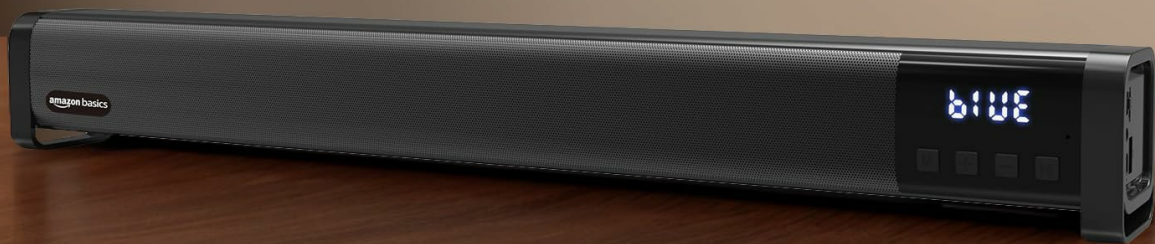


Figure 1: amazon basics SB20D Soundbar highlighting key features.

2. PACKAGE CONTENTS

Verify that all items are present in the package:

- amazon basics SB20D Bluetooth Soundbar
- AUX cable
- USB Cable (for charging)
- User Manual (this document)

3. PRODUCT OVERVIEW

The soundbar features dual 52mm full-range speakers for clear and dynamic audio. Control buttons are located on the unit for easy management of media playback and volume levels.

Seamless Bluetooth Connectivity

— Advanced Bluetooth 5.3 Technology —



Superior Sound
Quality



Powerful
Bass



Long Playback
Time



Easy
Connectivity



2400mAh Li-ion
rechargeable
battery



Figure 2: Front view of the soundbar with controls and display.

Controls and Ports:

- **Power Button:** Turns the soundbar on/off.
- **Mode Button (M):** Switches between Bluetooth, AUX, USB, and Micro SD modes.
- **Volume Down (-):** Decreases volume. Press and hold for previous track.
- **Volume Up (+):** Increases volume. Press and hold for next track.
- **Play/Pause Button (▶):** Plays or pauses audio.
- **USB Port:** For USB flash drive playback.
- **Micro SD Card Slot:** For Micro SD card playback.
- **AUX Input:** For wired connection via 3.5mm audio cable.
- **Charging Port:** For connecting the USB charging cable.

4. SETUP

4.1 Charging the Soundbar

Before first use, fully charge the soundbar. Connect the provided USB cable to the soundbar's charging port and the other end to a USB power adapter (not included) or a computer's USB port. The charging indicator will show the charging status. A full charge takes approximately 4.16 hours and provides up to 10 hours of playback at 70% volume.



Figure 3: Soundbar showcasing its long-lasting battery.

4.2 Powering On/Off

Press and hold the **Power Button** to turn the soundbar on or off.

5. OPERATING INSTRUCTIONS

5.1 Bluetooth Pairing

1. Turn on the soundbar. It will automatically enter Bluetooth pairing mode, indicated by a flashing 'BLUE' on the display.
2. Enable Bluetooth on your device (smartphone, tablet, laptop).
3. Search for available Bluetooth devices and select "amazon basics SB20D".
4. Once paired, the 'BLUE' indicator will stop flashing and remain solid. You can now play audio from your

device through the soundbar.

The soundbar supports Bluetooth 5.3 for faster pairing and a stable connection up to 10 meters.

Connect Effortlessly with Bluetooth 5.3

Wide Compatibility for Your Devices

 Bluetooth Connectivity

 Dual Speakers

 52mm Full-Range

 Increased Depth and Clarity



Figure 4: Soundbar connected to a television for enhanced audio.

5.2 AUX Mode

Connect one end of the 3.5mm AUX cable to the soundbar's AUX input and the other end to the audio output of your device. Press the **Mode Button (M)** until 'AUX' is displayed. The soundbar will play audio from the connected device.

5.3 USB / Micro SD Mode

Insert a USB flash drive or a Micro SD card into the respective port. The soundbar will automatically switch to USB or Micro SD mode and begin playing audio files. If it does not switch automatically, press the **Mode Button (M)** to select the correct input.

5.4 Media Playback

- Press the **Play/Pause Button (▶)** to play or pause the current track.
- Press and hold the **Volume Down (-)** button for the previous track.

- Press and hold the **Volume Up (+)** button for the next track.
- Short press the **Volume Down (-)** or **Volume Up (+)** buttons to adjust the volume.



Figure 5: The soundbar enhances various entertainment experiences.

6. MAINTENANCE

To ensure the longevity and optimal performance of your soundbar, follow these maintenance guidelines:

- **Cleaning:** Use a soft, dry cloth to clean the surface of the soundbar. Do not use liquid cleaners or abrasive materials.
- **Storage:** When not in use for extended periods, store the soundbar in a cool, dry place away from direct sunlight and extreme temperatures.
- **Avoid Water:** This product is not waterproof. Keep it away from water and high humidity environments.
- **Handle with Care:** Avoid dropping or subjecting the soundbar to strong impacts.

7. TROUBLESHOOTING

If you encounter issues with your soundbar, refer to the following common problems and solutions:

- **No Power:**

- Ensure the soundbar is charged. Connect it to a power source using the USB cable.
- Press and hold the Power Button for a few seconds to turn it on.

- **No Sound:**

- Check the volume level on both the soundbar and your connected device.
- Ensure the correct input mode (Bluetooth, AUX, USB, Micro SD) is selected. Press the **Mode Button (M)** to cycle through modes.
- For Bluetooth, ensure the soundbar is properly paired with your device.
- For AUX, ensure the cable is securely connected to both devices.

- **Bluetooth Disconnection:**

- Ensure your device is within the 10-meter Bluetooth range.
- Check for interference from other wireless devices.
- Try unpairing and re-pairing the soundbar with your device.

- **Poor Sound Quality:**

- Ensure the audio source is of good quality.
- Adjust the volume to avoid distortion.
- For Bluetooth, ensure there are no obstacles between the soundbar and your device.

8. SPECIFICATIONS

Feature	Specification
Brand	amazon basics
Model Number	AB-SB20D
Speaker Maximum Output Power	21.9 Watts
Connectivity Technology	Auxiliary, Bluetooth, USB
Audio Output Mode	Stereo
Mounting Type	Tabletop Mount
Speaker Type	Soundbar
Product Features	Lightweight, Portable
Colour	Black
Is Waterproof	False
Maximum Range	10 metres
Control Method	Push Button
Speaker Size	50.8 Millimetres

Feature	Specification
Bluetooth Range	10 Metres
Specific Uses For Product	Travel
Audio Encoding	Stereo
MP3 player	Yes
Battery Average Life	10 Hours
Controller Type	Button
Item Dimensions D x W x H	9.5D x 43W x 7.2H Centimeters
Item Weight	880 Grams
Compatible Devices	Laptop, Smartphone, Tablet
Power Source	Battery Powered
Number of Batteries	1 Lithium Ion (included)
Audio Driver Type	Dynamic Driver
Audio Driver Size	50.8 Millimetres
Number of Audio Channels	2.0
Impedance	4 Ohms
Battery Charge Time	4.16 Hours
Battery Capacity	2400 mAh

9. WARRANTY AND SUPPORT

Your amazon basics SB20D Bluetooth Soundbar comes with a **1-year limited warranty** from the date of purchase. This warranty covers manufacturing defects in the product itself, but not accessories.



Figure 6: The soundbar is covered by a 1-year brand warranty.

For Warranty Related Queries:

- **Contact Number:** 1800-419-2373
- **Email:** clicktech@blubirch.com
- **Working Hours:** 10am to 6pm, Monday-Saturday (except National Holidays)

Manufacturer Contact Information:

Brandworks Technologies Pvt. Ltd., PLOT NO 4 GROUND FLOOR, RAJ DARSHAN BUILDING, VASAI VIRAR, GIRIRAJ COMPLEX, SATIVALI ROAD, VASAI PALGHAR, MAHARASHTRA, 401208