

Manuals+

[Q & A](#) | [Deep Search](#) | [Upload](#)

manuals.plus /

› [SAKAWA](#) /

› [SAKAWA 1G72 7.5 HP Tiller with Wheel Kit, Handles, Furrower, and Plow - Instruction Manual](#)

SAKAWA 1G72

SAKAWA 1G72 7.5 HP Tiller Instruction Manual

Model: 1G72

1. INTRODUCTION

Thank you for choosing the SAKAWA 1G72 7.5 HP Tiller. This manual provides essential information for the safe and efficient operation, assembly, and maintenance of your new tiller. Please read this manual thoroughly before operating the machine to ensure proper use and to prevent injury or damage. Keep this manual in a safe place for future reference.

2. SAFETY INSTRUCTIONS

Your safety and the safety of others are paramount. Always follow these safety guidelines when operating the SAKAWA 1G72 Tiller.

- **Read the Manual:** Familiarize yourself with all controls and safety features before starting the engine.
- **Personal Protective Equipment (PPE):** Always wear appropriate safety gear, including sturdy footwear, eye protection, gloves, and hearing protection.
- **Clear Work Area:** Ensure the work area is free of stones, debris, and other obstacles that could be thrown by the blades. Keep bystanders, children, and pets at a safe distance.
- **Fuel Handling:** Refuel in a well-ventilated area with the engine off and cool. Do not smoke or use open flames near fuel.
- **Engine Off:** Always turn off the engine before performing any adjustments, maintenance, or clearing blockages.
- **Low Oil Sensor:** The tiller is equipped with a low oil sensor that prevents operation if the oil level is incorrect. Do not attempt to bypass this safety feature.
- **Safety Clutch Lever:** The clutch lever includes a safety system for comfortable and secure operation. Ensure it functions correctly before use.
- **Slope Operation:** Exercise extreme caution when operating on slopes. Avoid steep inclines and operate across the face of slopes, not up and down.

3. PACKAGE CONTENTS

Upon unpacking, verify that all components are present and undamaged. If any parts are missing or damaged, contact your dealer immediately.

- SAKAWA 1G72 Tiller Unit (Engine, Chassis, Blades)
- Set of Metallic Wheels (400 x 8)
- Standard Handlebar Set
- Adjustable Furrower
- Plow
- User Manual



Image 3.1: SAKAWA 1G72 Tiller with all included accessories, including the main unit, metallic wheels, furrower, and plow.

4. ASSEMBLY

Follow these steps to assemble your SAKAWA 1G72 Tiller.

1. **Handlebar Assembly:** Attach the handlebar to the main unit. The handlebar is multi-position adjustable for height and lateral movement. Secure it firmly.
2. **Blade Installation:** The detachable blade set can be adjusted to a working width of 60 to 85 cm. Ensure

blades are correctly oriented and securely fastened.

3. **Front Wheel Attachment:** Install the front transport wheel. This wheel is designed for easy use without spring pins, facilitating transport.
4. **Accessory Attachment:** The tiller includes a rear hitch for connecting accessories. Attach the metallic wheels, adjustable furrower, or plow as needed for your specific task. The machine also features a new support for wheels or rotovator at the front of the chassis.



Image 4.1: The SAKAWA 1G72 Tiller with its front transport wheel and tilling blades installed.



Image 4.2: Close-up of the metallic wheels (400 x 8) included with the tiller.



Image 4.3: The adjustable furrower attachment for creating furrows in soil.

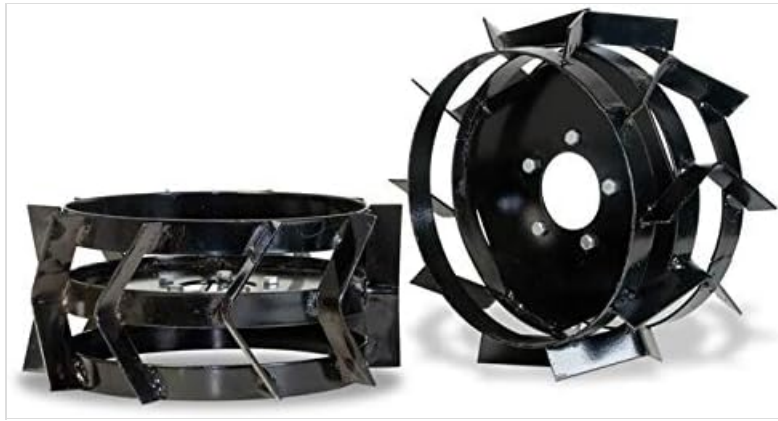


Image 4.4: The plow attachment, designed for turning over soil.

5. OPERATION

Before each use, perform the following checks and procedures.

1. Pre-Operation Checks:

- **Engine Oil:** Check the engine oil level. The low oil sensor will prevent starting if the level is insufficient.
- **Fuel:** Ensure the fuel tank is filled with fresh, clean gasoline.
- **Air Filter:** Inspect the oil bath air filter for cleanliness.
- **Fasteners:** Verify all nuts, bolts, and screws are tight.

2. **Starting the Engine:** Engage the choke (if cold), set the throttle, and use the reversible pull starter to start the 4-stroke OHV engine.

3. **Clutch Engagement:** The tiller features a double belt clutch. Use the safety clutch lever on the handlebar to engage and disengage the drive. This lever is designed for comfortable and safe operation.



Image 5.1: The safety clutch lever, designed for secure and comfortable operation.

4. **Gear Selection:** The gearbox offers 2 forward speeds and 1 reverse speed. Select the appropriate gear for your task using the gear lever.



Image 5.2: The gear selection lever, allowing for 2 forward and 1 reverse speed.

5. **Working Width and Depth:** The working width is adjustable from 50 to 85 cm, and the tilling depth ranges from 17 to 35 cm. Adjust these settings according to your soil conditions and cultivation needs.
6. **Using Accessories:** Attach the metallic wheels for transport or specific tasks. The adjustable furrower and plow can be connected to the rear hitch for specialized soil preparation.

6. MAINTENANCE

Regular maintenance ensures the longevity and optimal performance of your SAKAWA 1G72 Tiller.

- **Engine Oil:** Check the oil level before each use. Change the engine oil according to the schedule in the engine manual (typically after the first 5 hours, then every 25-50 hours).
- **Air Filter:** Clean the oil bath air filter regularly, especially when working in dusty conditions. Replace the oil in the filter bowl as needed.
- **Spark Plug:** Inspect and clean the spark plug periodically. Replace it if it is fouled or damaged.
- **Blades:** Inspect the tilling blades for wear or damage. Clean soil and debris from the blades after each use. Replace worn blades to maintain tilling efficiency.
- **Belt Cover:** The new belt cover design allows for easy mounting and dismounting with a single screw, simplifying belt inspection and replacement.
- **Gearbox Protection:** The steel plate on the gearbox strengthens and protects the seals and gearbox. Periodically check for any signs of leakage or damage.
- **General Cleaning:** Clean the tiller thoroughly after each use, removing all soil, grass, and debris. This prevents corrosion and ensures proper function.
- **Storage:** Store the tiller in a clean, dry, and well-ventilated area. If storing for an extended period, follow the long-term storage instructions in the engine manual (e.g., fuel stabilizer, spark plug removal).

7. TROUBLESHOOTING

This section provides solutions to common issues you might encounter.

- **Engine Does Not Start:**
 - Check fuel level.
 - Verify engine oil level (low oil sensor will prevent starting).
 - Ensure spark plug is clean and properly gapped.
 - Check choke position.
- **Loss of Power During Operation:**
 - Check air filter for clogging.
 - Ensure fuel is fresh and not contaminated.
 - Inspect spark plug.
- **Unusual Noises or Vibrations:**
 - Stop the engine immediately.
 - Check for loose fasteners.
 - Inspect blades for damage or foreign objects.
 - If the issue persists, contact a qualified service technician.

8. SPECIFICATIONS

Feature	Specification
Engine Type	4-stroke OHV
Engine Displacement	208 cc
Engine Power	7.5 HP (Real)
Starter	Reversible Pull Starter
Air Filter	Oil Bath
Transmission	Reinforced Gear Cascade
Clutch	Double Belt
Gears	2 Forward, 1 Reverse
Adjustable Working Width	50 - 85 cm
Tilling Depth	17 - 35 cm
Chassis	Reinforced Steel
Weight	76 kg
Safety Features	Low Oil Sensor, Safety Clutch Lever

9. WARRANTY AND SUPPORT

For warranty information, technical support, or spare parts, please contact your authorized SAKAWA dealer or the seller (ZonaGarden) directly. Ensure you have your product model number (1G72) and purchase details available when contacting support.

This product is from a small business brand. Your support is appreciated.