

A39

Wireless Bluetooth Speaker Instruction Manual

Model: A39 | Brand: Generic

1. INTRODUCTION

Thank you for purchasing the Generic Wireless Bluetooth Speaker. This speaker features dual acoustic units, vibrating film technology for deep bass, Bluetooth 5.3 connectivity, synchronized LED streamer lights, and support for TF card and FM radio. This manual provides detailed instructions for setup, operation, and maintenance to ensure optimal performance and longevity of your device.



Image: The Wireless Bluetooth Speaker (Black model) with its transparent casing and illuminated internal components.

2. SAFETY INFORMATION

- Do not expose the speaker to extreme temperatures, humidity, or direct sunlight.
- Avoid dropping or subjecting the speaker to strong impacts.
- Do not disassemble, repair, or modify the device yourself. Refer to qualified service personnel.
- Keep the speaker away from water and other liquids as it is not waterproof.
- Use only the provided USB cable for charging.

- Clean the speaker with a soft, dry cloth. Do not use abrasive cleaners or solvents.

3. PACKAGE CONTENTS

Please check the box for the following items:

- Wireless Bluetooth Speaker
- USB Charging Cable
- User Manual (this document)

4. PRODUCT OVERVIEW

The Generic Wireless Bluetooth Speaker is designed for portable audio enjoyment with dynamic lighting effects. Familiarize yourself with its components and controls:

Components and Controls

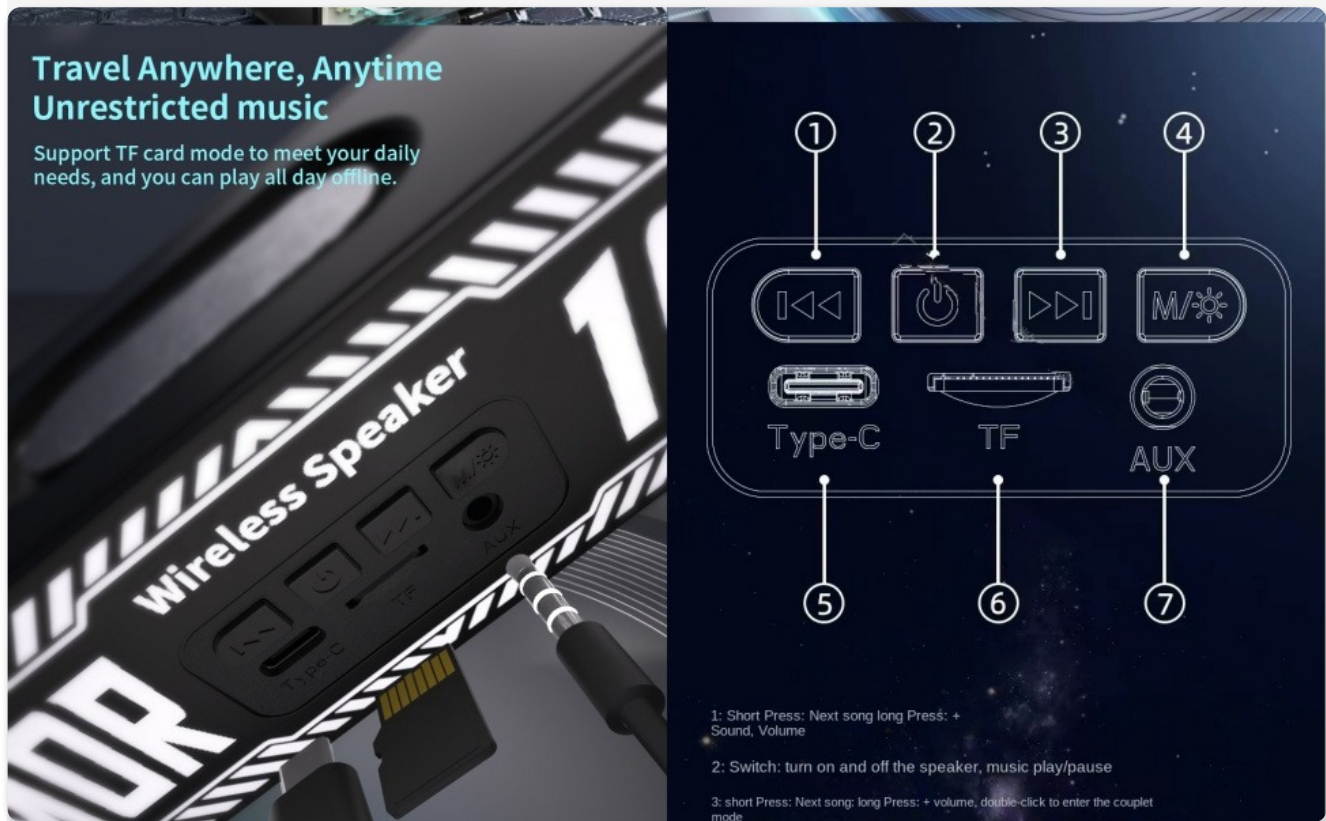


Image: Detailed view of the speaker's top panel showing buttons and ports.

No.	Control/Port	Function
1	Previous Track / Volume Down	Short press: Previous song. Long press: Decrease volume.
2	Power / Play/Pause	Long press: Power On/Off. Short press: Play/Pause.
3	Next Track / Volume Up	Short press: Next song. Long press: Increase volume. Double-click: Enter TWS pairing mode.

No.	Control/Port	Function
4	Mode / Light Switch	Short press: Switch playback mode (Bluetooth/TF/FM). Long press: Switch light modes.
5	Type-C Charging Port	Connect USB charging cable for power.
6	TF Card Slot	Insert TF (MicroSD) card for local music playback.
7	AUX Input	Connect external audio devices via 3.5mm audio cable.

5. SETUP

Charging the Speaker

Before first use, fully charge the speaker. Connect the provided USB charging cable to the Type-C port on the speaker and the other end to a USB power adapter (not included) or a computer USB port. The charging indicator light will show charging status and turn off when fully charged.

Initial Bluetooth Pairing

1. Long press the Power button (2) to turn on the speaker. A voice prompt will indicate it's in Bluetooth pairing mode.
2. On your mobile device (smartphone, tablet, etc.), enable Bluetooth and search for available devices.
3. Select "A39" or the corresponding device name from the list.
4. Once connected, a voice prompt will confirm successful pairing.

True Wireless Stereo (TWS) Pairing

To achieve 360° surround sound, you can pair two A39 speakers together:

1. Ensure both speakers are powered on and not connected to any other Bluetooth device.
2. On one of the speakers, double-click the Next Track / Volume Up button (3). The speaker will enter TWS pairing mode.
3. The two speakers will automatically search for and connect to each other. A voice prompt will confirm successful TWS pairing.
4. Once TWS paired, connect your mobile device to one of the speakers via Bluetooth as described in "Initial Bluetooth Pairing". Both speakers will now play audio simultaneously.

TWS interconnection technology

Support TWS series, True 2.1 stereo

Easily connect two speakers to form a music phalanx, and open the home theater at any time.

TWS



Image: Two speakers connected via TWS for a stereo audio experience.

Your browser does not support the video tag.

Video: Demonstration of the Wireless Bluetooth Speaker's features, including TWS pairing and light effects. This video shows the speaker's transparent design and how the lights react to music.

6. OPERATING INSTRUCTIONS

Bluetooth Mode

After successful pairing, the speaker will automatically connect to the last paired device when powered on. If not, manually select the speaker from your device's Bluetooth settings. Play audio from your device, and it will stream through the speaker.

TF Card Mode

Insert a TF (MicroSD) card with MP3 audio files into the TF Card Slot (6). The speaker will automatically switch to TF card mode and begin playing music. Use the Previous/Next Track buttons (1, 3) to navigate songs.

FM Radio Mode

Short press the Mode button (4) to switch to FM radio mode. The speaker will automatically scan and save available radio stations. Use the Previous/Next Track buttons (1, 3) to switch between saved stations.

AUX Mode

Connect an external audio device (e.g., MP3 player, computer) to the AUX Input (7) using a 3.5mm audio cable. The speaker will automatically switch to AUX mode. Audio will be played from the connected device.

Controlling Playback and Volume

- **Play/Pause:** Short press the Power button (2).
- **Next Track:** Short press the Next Track button (3).
- **Previous Track:** Short press the Previous Track button (1).
- **Volume Up:** Long press the Next Track button (3).
- **Volume Down:** Long press the Previous Track button (1).

Lighting Effects

The speaker features synchronized LED streamer lights. Long press the Mode / Light Switch button (4) to cycle through different light modes or to turn the lights off.

7. MAINTENANCE

Proper care will extend the life of your speaker:

- **Cleaning:** Wipe the speaker's surface with a soft, dry, lint-free cloth. Do not use liquid cleaners, aerosols, or solvents.
- **Storage:** Store the speaker in a cool, dry place away from direct sunlight and extreme temperatures.
- **Battery Care:** If the speaker will not be used for an extended period, charge it fully at least once every three months to maintain battery health.

8. TROUBLESHOOTING

If you encounter issues with your speaker, please refer to the following common problems and solutions:

Problem	Possible Cause	Solution
Speaker does not turn on.	Low battery.	Charge the speaker fully.
Cannot pair via Bluetooth.	Speaker is not in pairing mode or too far from device.	Ensure speaker is in pairing mode. Move speaker closer to your device (within 10 meters). Turn off and on Bluetooth on your device.
No sound from speaker.	Volume too low, incorrect mode, or device not playing.	Increase speaker and device volume. Ensure correct mode (Bluetooth, TF, FM, AUX). Check if audio is playing on your connected device.

Problem	Possible Cause	Solution
TWS pairing fails.	Speakers are already connected to other devices or too far apart.	Ensure both speakers are disconnected from other devices. Place them close to each other. Repeat TWS pairing steps.
FM radio reception is poor.	Weak signal or interference.	Move the speaker to a location with better reception.

9. SPECIFICATIONS

Detailed technical specifications for the Wireless Bluetooth Speaker:

Feature	Detail
Model Name	Transparent Bluetooth speaker (A39)
Connectivity Technology	Bluetooth 5.3, USB, AUX
Speaker Type	Subwoofer (Dual Drivers)
Speaker Maximum Output Power	10 Watts (5W*2)
Frequency Response	20 KHz
Audio Output Mode	Stereo
Battery Capacity	1200mAh
Battery Life	Up to 6 Hours
Transmission Distance	10 meters (approx. 33 feet)
Product Dimensions (L x W x H)	7.2" x 2" x 2.6" (183mm x 51mm x 67mm)
Item Weight	15.8 ounces (446.6 Grams)
Special Features	LED Light, Built-in Microphone, USB Port, TF Card Slot, FM Radio



4: short Press: switch light mode long Press: switch FM radio function
5: charger access port. 6:TF card, memory card mode interface 7:AUX mode interface

Model: A39	Shell color: ● Black ● White	Bluetooth: V5.3
Battery capacity: 1200mAH	Transmission distance: 10 m	Horn size: Medium 40mm * 2
Input current: DC 5V	Horn power: 5W*2	Snr: ≥80dB
Product Weight: Net weight: 459.2g Gross weight: 5 38.6g	Packing weight: Net weight: 21Kg Gross weight: 21.8Kg	Case pack: 40PCS
Product Size: Product: 183X51X67mm Packing: 210 × 80 × 93mm	Packing size: 46.5 X 42.5 X 39.5cm	

Image: Speaker dimensions and key technical specifications.

10. WARRANTY AND SUPPORT

This product comes with a standard manufacturer's warranty. For specific warranty terms and conditions, please refer to the documentation provided at the time of purchase or contact your retailer.

For technical support, troubleshooting assistance, or inquiries about replacement parts, please contact the seller or retailer from whom you purchased the product. Please have your product model number (A39) and purchase details ready when contacting support.