

[Manuals.plus](#) /

› [Himimi](#) /

› Himimi Double Rod Garment Rack Instruction Manual

Himimi 2971 W2 M

Himimi Double Rod Garment Rack Instruction Manual

Model: 2971 W2 M

INTRODUCTION

This manual provides detailed instructions for the assembly, operation, and maintenance of your Himimi Double Rod Garment Rack. Designed for efficient storage, this heavy-duty clothes rail offers ample space with its double hanging rods, three-tier shelf, and two side hooks. Its robust construction ensures secure support for your clothing collection, while the integrated wheels provide convenient mobility.



Figure 1: Fully assembled Himimi Double Rod Garment Rack.

SAFETY INFORMATION

Please read all safety warnings before assembly and use to prevent injury or damage to the product.

- **Do Not Overload:** Ensure the garment rack is not overloaded beyond its capacity to maintain stability and prevent collapse. Distribute weight evenly.
- Keep small parts away from children during assembly.
- Ensure all connections are securely fastened before use.

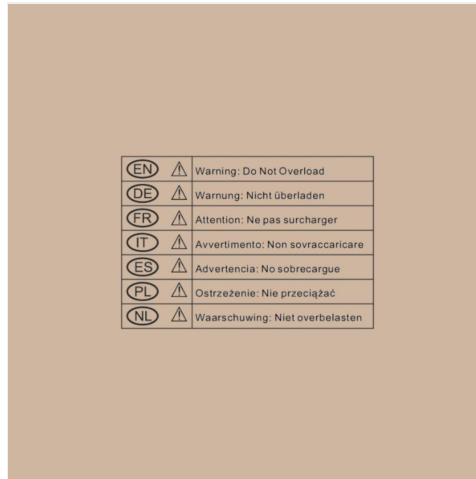


Figure 2: Important safety warning regarding overloading.

PACKAGE CONTENTS

Verify that all components listed below are present before beginning assembly. If any parts are missing or damaged, please contact customer support.

- 2 × Side Hooks
- 4 × Wheels
- 2 × Hanging Rods
- 3 × Wire Storage Shelves
- Vertical support poles and connecting pieces

SETUP AND ASSEMBLY

Assembly of the Himimi Garment Rack is designed to be straightforward. Follow these steps carefully:

1. **Unpack Components:** Lay out all parts on a clean, flat surface. Identify each component using the provided parts list.
2. **Attach Wheels:** Securely attach the four wheels to the base of the vertical support poles. Ensure two of the wheels are the lockable type and are positioned for easy access.
3. **Assemble Vertical Poles:** Connect the vertical pole segments. The poles are typically designed to fit together with a secure locking mechanism.
4. **Install Shelves:** The middle hanging rods and shelves utilize a slip-lock system. Install the clips onto the vertical poles at your desired height. Then, slide the wire storage shelves downward slowly until all four sleeves snugly fit onto the rods. *Note: Gaps between the clips are normal and essential for ensuring a secure and sturdy fit; this is not a quality defect.*

5. **Attach Hanging Rods:** Insert the two hanging rods into their designated slots on the frame.
6. **Add Side Hooks:** Attach the two side hooks to the outer vertical poles as desired for additional storage.
7. **Final Check:** Before loading, gently shake the assembled rack to ensure all connections are stable and secure.

Adjustable Storage Shelves



Figure 3: Adjustable storage shelves allow for customized organization.

Helping you organize and store items more effectively



Extra Space on the Top



Double Side Hooks



Double Hanging Rods



Sturdy Shoe Racks

Figure 4: Key features including top shelf, side hooks, and double hanging rods.

OPERATING INSTRUCTIONS

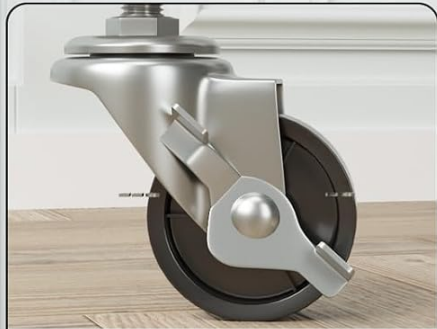
Your Himimi Garment Rack is designed for versatile and convenient use.

- **Hanging Clothes:** Utilize the two hanging rods for shirts, dresses, trousers, and other garments. Distribute weight evenly across the rods to maintain balance.
- **Shelf Storage:** The three-tier shelves provide space for folded clothes, shoes, storage boxes, or accessories. Adjust the shelf height as needed during assembly to accommodate different items.
- **Side Hooks:** Use the two side hooks for hanging bags, hats, scarves, or other small items.
- **Mobility and Stability:** The garment rack features four wheels for easy movement. Two of these wheels are lockable. To move the rack, unlock the wheels. To secure it in place, engage the locks on the two lockable wheels.

Effortlessly move the Clothes Rail to the desired location



Wheels for mobility



Lockable for standing



Figure 5: Wheels provide mobility, with lockable options for stability.



Figure 6: The garment rack seamlessly integrates into a bedroom environment.



Figure 7: The garment rack is also suitable for laundry rooms.

MAINTENANCE

To ensure the longevity and optimal performance of your Himimi Garment Rack, follow these simple maintenance guidelines:

- **Cleaning:** Wipe down the metal surfaces with a soft, damp cloth. Avoid abrasive cleaners or harsh chemicals that could damage the finish.
- **Regular Checks:** Periodically inspect all connections and fasteners to ensure they remain tight. Re-tighten if necessary.
- **Weight Distribution:** Always distribute the weight of your garments and items evenly across the rods and shelves to prevent strain on the frame.
- **Rust Prevention:** While the rack is designed to be rust-proof, avoid prolonged exposure to excessive moisture to maintain its appearance and integrity.

TROUBLESHOOTING

If you encounter any issues with your garment rack, refer to the following common problems and solutions:

Problem	Possible Cause	Solution
Rack feels unstable or wobbly.	Loose connections; uneven weight distribution.	Ensure all pole connections and shelf clips are securely fastened. Redistribute items evenly.
Wheels do not roll smoothly.	Wheels are locked; debris in wheels; unsuitable flooring.	Unlock the wheels. Clean any debris from the wheel casters. Note that the rack may not roll smoothly on very plush or thick carpets due to the brake lever design. Consider using on hard flooring or low-pile carpets for optimal mobility.
Shelves slide down after assembly.	Clips not properly installed or overloaded.	Ensure the slip-lock clips are correctly oriented and fully engaged on the poles. Reduce the weight on the shelf.

SPECIFICATIONS

Detailed specifications for the Himimi Double Rod Garment Rack:

Feature	Detail
Model Number	2971 W2 M
Product Dimensions	90 cm (W) x 42 cm (D) x 205 cm (H)
Item Weight	10 kg
Material	Metal
Colour	White
Style	Industrial
Finish	Uncoated, Stainless Steel
Installation Method	Free Standing
Special Features	Lockable Wheel, Space Saver, With Adjustable Shelves, Rust-Proof, Heavy Duty
Recommended Uses	Coats, Long Dress, Hats, Shoes, Trousers

Large Capacity Heavy Duty Clothes Rack



Figure 8: Product dimensions overview.

WARRANTY AND SUPPORT

Himimi is committed to providing high-quality products and customer satisfaction. We offer:

- **Lifetime Technical Assistance:** Our service team is available to provide technical support for the lifetime of your product.
- **24-Hour Problem Resolution:** Any product problems you encounter will be addressed and resolved within 24 hours by our dedicated support team.

For assistance, please visit the [Himimi Store on Amazon](#) or contact customer service through your purchase platform.

