

Fromann JLDQ-19

Fromann JLDQ-19 Recliner Actuator Motor Instruction Manual

Model: JLDQ-19 (JLDQ.19.394.212Z01)

1. INTRODUCTION

This manual provides essential information for the safe and effective installation, operation, and maintenance of your Fromann JLDQ-19 Recliner Actuator Motor, model JLDQ.19.394.212Z01. This product is designed as a replacement motor for electric sofas, massage chairs, and similar applications. Please read this manual thoroughly before proceeding with installation or use.

2. SAFETY INFORMATION

- Always disconnect power to the recliner or furniture before attempting any installation, removal, or maintenance.
- Ensure the replacement motor's specifications (voltage, stroke, mounting dimensions) match your original motor to prevent damage or malfunction.
- Installation should be performed by individuals familiar with electrical and mechanical components to ensure proper and safe operation.
- Keep hands and loose clothing clear of moving parts during operation.
- Do not attempt to open or repair the motor housing. Refer to qualified service personnel for repairs.

3. PRODUCT OVERVIEW

The Fromann JLDQ-19 is a DC motor designed for power recliner applications. It features a compact design for easy installation and provides reliable linear actuation for adjusting furniture positions.

3.1 What's in the Box

- 1 x Fromann JLDQ-19 Recliner Actuator Motor

3.2 Key Features

- Model: JLDQ-19 (JLDQ.19.394.212Z01)
- Stroke: 8.34 inches (212 mm)
- Minimum Installation Dimension (Retracted): 15.5 inches (394 mm)
- Maximum Installation Dimension (Extended): 23.84 inches (606 mm)
- DC Motor for power recliner applications



Figure 1: Fromann JLDQ-19 Recliner Actuator Motor. This image shows the complete actuator motor with its attached cables and connectors.

4. SETUP AND INSTALLATION

Before installation, verify that the JLDQ-19 motor is compatible with your recliner's existing system. Check the label on your old motor and compare it with the specifications provided in this manual.



Figure 2: Close-up view of the JLDQ-19 motor's specification label. This label provides critical information such as model number, voltage, wattage, stroke, load capacity, speed, and duty cycle.

4.1 Pre-Installation Checks

1. **Verify Compatibility:** Confirm the model number (JLDQ-19, JLDQ.19.394.212Z01), stroke length, and mounting dimensions match your original actuator.
2. **Power Supply:** Ensure your recliner's power supply unit (PSU) and hand control/switch are functioning correctly. A faulty PSU or switch can mimic a motor failure.
3. **Safety First:** Disconnect the recliner from the main power outlet before starting any work.

4.2 Installation Steps

1. **Remove Old Actuator:** Carefully detach the old actuator from its mounting points on the recliner frame and the moving mechanism. Note how the old actuator was connected.
2. **Disconnect Wiring:** Unplug the electrical connectors from the old motor. Pay attention to the type and number of connectors.
3. **Mount New Actuator:** Position the new JLDQ-19 motor in the same location as the old one. Secure it to the recliner frame and the moving mechanism using the appropriate pins or bolts. Ensure the motor is securely fastened but can still articulate freely.
4. **Connect Wiring:** Plug the electrical connectors from the recliner's power supply and hand control into

the corresponding ports on the new motor. The JLDQ-19 typically uses standard connectors for power and control.



Figure 3: Electrical connectors of the JLDQ-19 motor. These connectors are used to link the motor to the recliner's power supply and control switch.

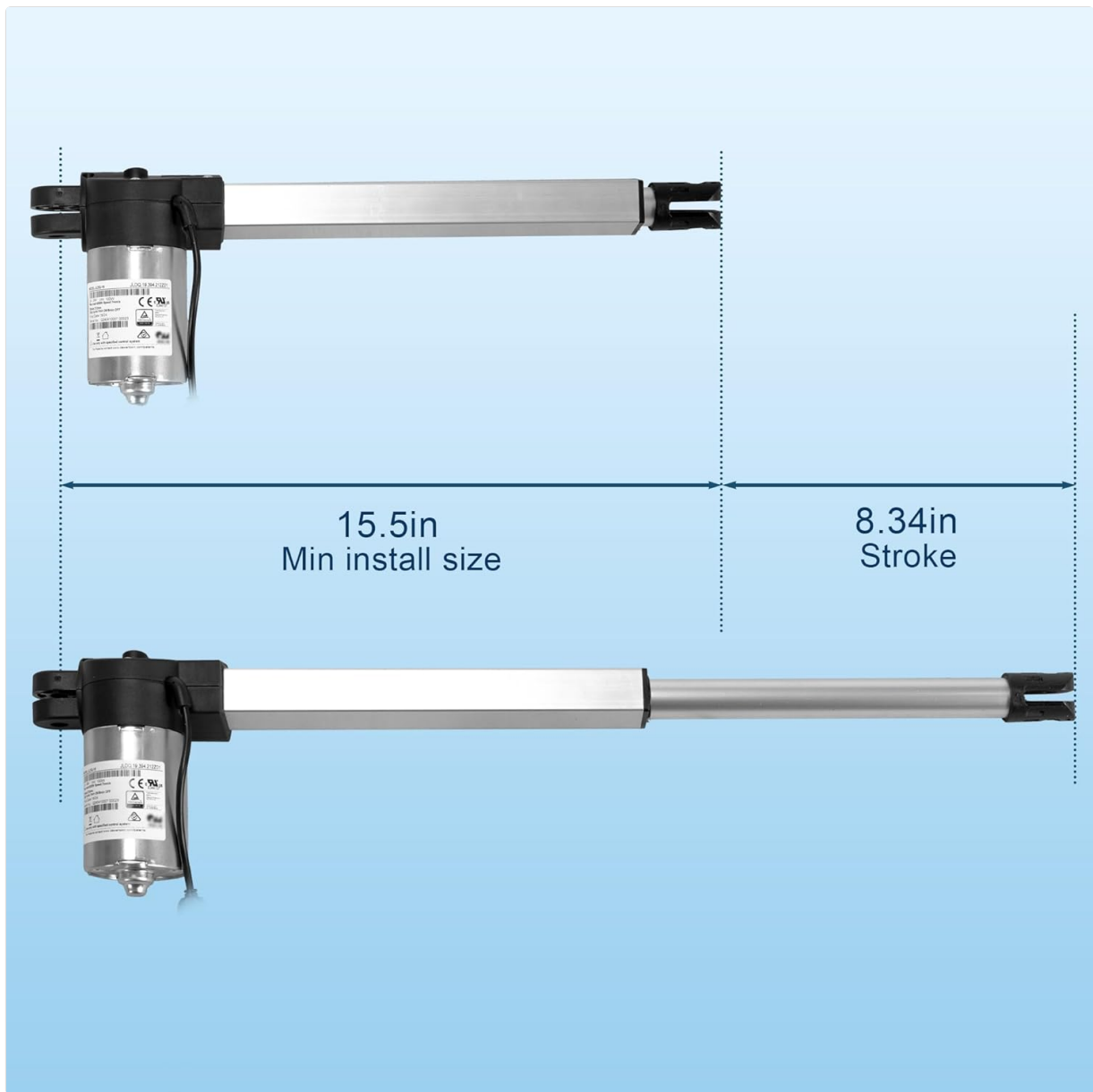


Figure 4: JLDQ-19 motor showing minimum installation size (15.5 inches) and stroke length (8.34 inches). This visual aid helps in verifying the physical fit within the recliner mechanism.

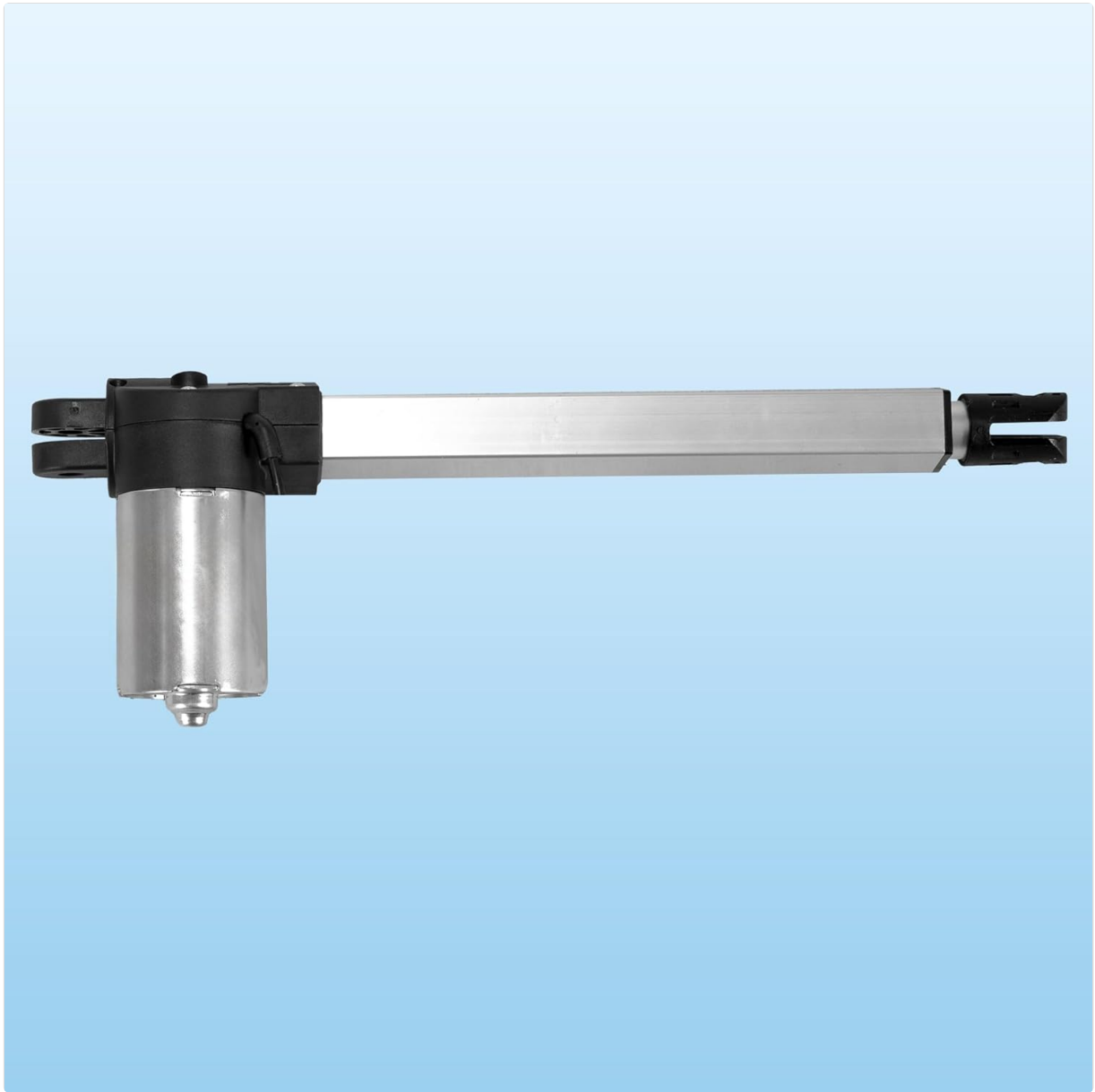


Figure 5: Side view of the JLDQ-19 motor in its fully retracted position, illustrating the minimum installation dimension.

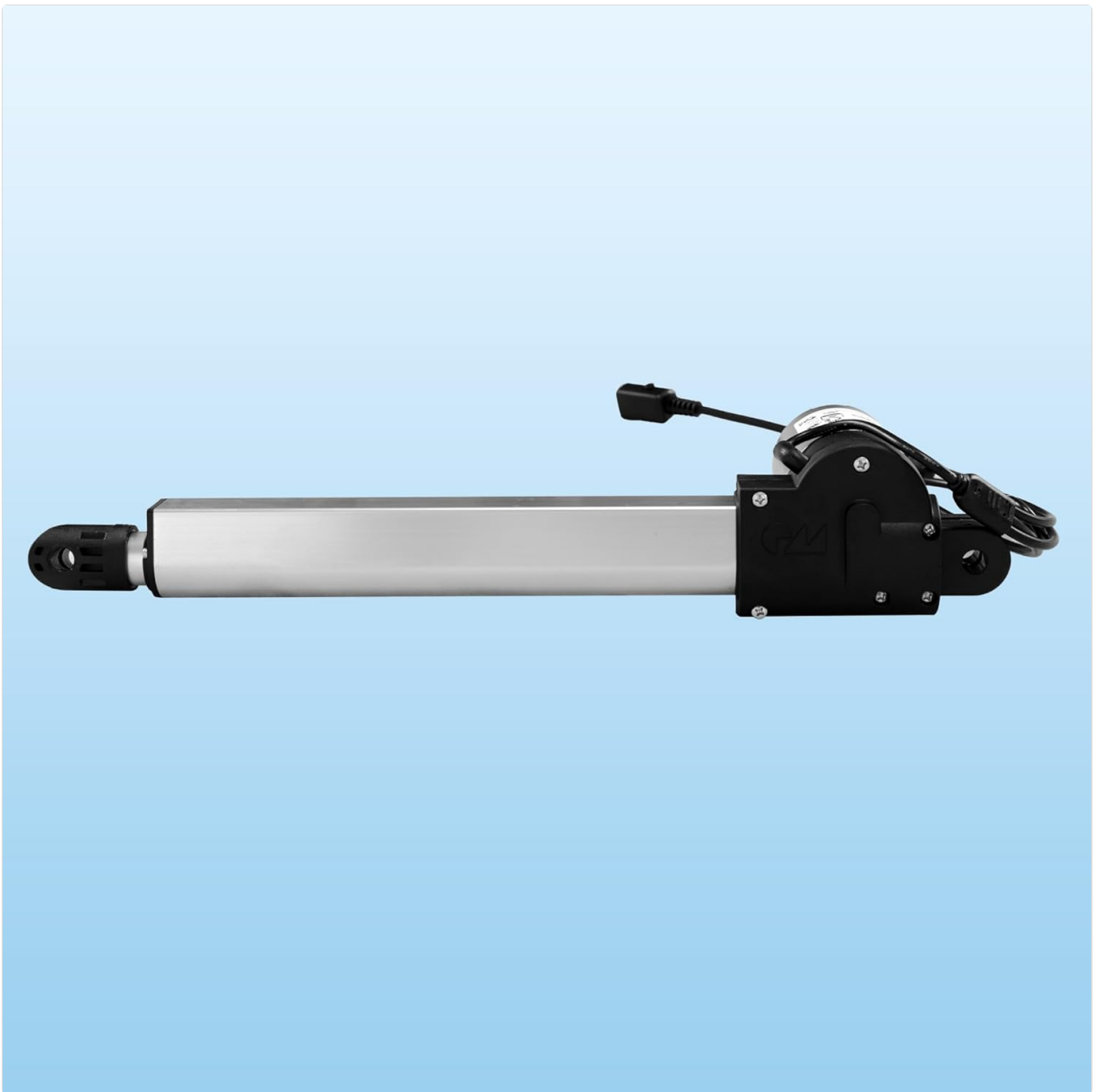


Figure 6: Side view of the JLDQ-19 motor in its fully extended position, illustrating the maximum installation dimension.

5. **Test Operation:** Reconnect the recliner to the power outlet. Carefully test the recliner's functions using the hand control to ensure the motor operates smoothly and correctly through its full range of motion.

5. OPERATING INSTRUCTIONS

The Fromann JLDQ-19 motor functions as a direct replacement for your recliner's original actuator. Operation is controlled entirely by your recliner's existing hand control or integrated switches. There are no separate controls on the motor itself.

- Press and hold the appropriate button on your recliner's hand control to extend or retract the footrest and/or recline the backrest.
- Release the button to stop the movement at the desired position.
- The motor has a duty cycle of 1 minute ON / 8 minutes OFF. Avoid continuous operation for extended periods to prevent overheating and ensure longevity.

6. MAINTENANCE

The JLDQ-19 recliner actuator motor is designed for minimal maintenance. Regular inspection can help ensure its longevity and proper function.

- **Cleaning:** Keep the motor and surrounding areas free from dust and debris. Use a dry cloth for cleaning. Do not use liquid cleaners directly on the motor.
- **Inspection:** Periodically check all mounting points and electrical connections to ensure they are secure and free from damage.
- **Lubrication:** The motor is pre-lubricated and does not require additional lubrication.
- **No User Serviceable Parts:** The motor housing should not be opened. Attempting to repair internal components will void any potential warranty and may cause further damage.

7. TROUBLESHOOTING

If your recliner is not operating correctly after motor replacement, consider the following troubleshooting steps:

- **No Movement:**
 - Ensure the recliner is securely plugged into a working power outlet.
 - Check all electrical connections between the motor, power supply, and hand control. Ensure they are fully seated.
 - Test the power supply unit (PSU) and hand control/switch. If possible, test with a known working PSU or control.
 - Inspect the motor's wiring for any visible damage or pinched cables.
- **Partial Movement or Stuttering:**
 - Check for any obstructions preventing the recliner mechanism from moving freely.
 - Ensure the motor is securely mounted and not binding.
 - Verify the power supply is providing adequate voltage.
- **Unusual Noises:**
 - Disconnect power and inspect the motor and mechanism for any loose parts or foreign objects.
 - If the noise persists and is severe, discontinue use and contact support.

If these steps do not resolve the issue, it may indicate a more complex problem with the motor or the recliner's electrical system. Contact the seller or a qualified technician for further assistance.

8. SPECIFICATIONS

Specification	Detail
Model Number	JLDQ-19 (JLDQ.19.394.212Z01)
Brand	Fromann
Voltage	24-29V DC
Power	100W
Stroke Length	8.34 inches (212 mm)

Min. Install Dimension (Retracted)	15.5 inches (394 mm)
Max. Install Dimension (Extended)	23.84 inches (606 mm)
Max. Load	4000N
Speed	7mm/s
Duty Cycle	1 minute ON / 8 minutes OFF
Material	Metal
Product Dimensions (Motor Body)	5.5 x 5.5 x 3.1 inches
Item Weight	4.23 Pounds

9. WARRANTY AND SUPPORT

For warranty information and customer support, please refer to the documentation provided with your purchase or contact the seller directly. Ensure you have your purchase details and the product model number (JLDQ-19, JLDQ.19.394.212Z01) available when contacting support. You can also visit the [Fromann Store on Amazon](#) for more product information.