



[Manuals.plus](#) /

› [HBEZON](#) /

› [HBEZON 20x28 LED Medicine Cabinet User Manual](#)

HBEZON 2028R

HBEZON 20x28 LED Medicine Cabinet User Manual

Model: 2028R / AURA

Safety Information	Product Overview	Installation	Operation	Maintenance	Troubleshooting
	Specifications		Warranty & Support		

1. SAFETY INFORMATION

Please read all instructions carefully before installation and use. Retain this manual for future reference.

- **Electrical Safety:** Installation must be performed by a qualified electrician in accordance with all local electrical codes. Ensure power is disconnected at the circuit breaker before any electrical work.
- **Glass Handling:** The mirror is made of glass. Handle with care to prevent breakage and injury.
- **Weight Capacity:** Do not exceed the maximum weight capacity of the shelves (60 pounds total).
- **Moisture:** While designed for bathroom environments, avoid direct water spray on electrical components.
- **Ventilation:** Ensure adequate ventilation during and after installation.

2. PRODUCT OVERVIEW

The HBEZON LED Medicine Cabinet combines modern design with practical functionality, offering illuminated mirror features, ample storage, and convenient power options for your bathroom.

2.1 Key Features

- **3 Color Lighting Modes & Adjustable Brightness:** High-brightness 6500K LED light strip with warm, natural, and cold white modes. Brightness is adjustable from 10% to 100%. ETL certified.
- **Memory Function & Anti-fog Function:** Smart touch buttons control lighting and anti-fog. Memory function retains last light setting. Built-in anti-fog keeps the mirror clear.
- **Electrical Outlet, USB Port & Soft-Close DTC Hinges:** Integrated electrical outlets and USB ports for device charging. Rustproof soft-close DTC hinges ensure smooth, quiet door operation.
- **Space-Saving Design:** Features 2 fully adjustable & removable tempered glass shelves for maximized

storage. Enclosed design keeps items organized and dust-free.

- **Recessed or Surface Wall-Mounted:** Durable aluminum frame allows for versatile installation options.



Figure 2.1: Front view of the HBEZON LED medicine cabinet, showcasing its illuminated mirror and sleek design.

2.2 Package Contents

- LED Medicine Cabinet Mirror
- Mounting Hardware
- Tempered Glass Shelves (x2)

2.3 Product Dimensions



Figure 2.2: A diagram illustrating the overall dimensions of the medicine cabinet and the cutout dimensions for recessed mounting.

Table 2.1: Key Dimensions

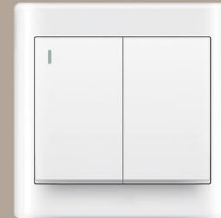
Measurement	Value
Overall Dimensions (W x H x D)	5"D x 20"W x 28"H
Recessed Cutout Dimensions (W x H x D)	19 1/4" x 23 5/16" x 4 3/16"

3. INSTALLATION INSTRUCTIONS

This medicine cabinet supports both recessed and surface wall-mounted installations. Choose the method that best suits your bathroom design.

3.1 Mounting Options

Super Safe & Energy-saving



Hardwired Connection(Wall switch)

Note: Wall Switch NOT Included.

ETL Listed & Energy-saving



ETL Listed



Environment-Friendly

Figure 3.1: The medicine cabinet can be installed as a recessed mount or a surface wall mount.

3.2 Pre-Installation Checklist

- Verify all package contents are present and undamaged.
- Ensure the installation location is suitable for the chosen mounting type (recessed or surface).
- Confirm electrical wiring is accessible and meets local codes.
- Gather necessary tools: measuring tape, level, drill, screwdriver, wire strippers, safety glasses.

3.3 Recessed Mounting

1. Carefully remove the side panels from the cabinet for recessed installation.
2. Create a wall cutout according to the specified recessed dimensions (refer to Figure 2.2).
3. Insert the cabinet into the wall opening.
4. Secure the cabinet using the provided mounting hardware.

3.4 Surface Wall Mounting

1. Mark the desired mounting location on the wall.

2. Drill pilot holes and install mounting brackets (if applicable) or anchors.
3. Hang the cabinet securely on the wall using the provided hardware.

3.5 Electrical Connection

The cabinet is designed for hardwired connection. It requires a dedicated electrical circuit.

- Ensure power is OFF at the circuit breaker.
- Connect the cabinet's electrical wires to the household wiring (Live, Neutral, Ground) according to local electrical codes.
- Secure all connections with wire nuts and ensure proper insulation.
- Restore power and test functionality.

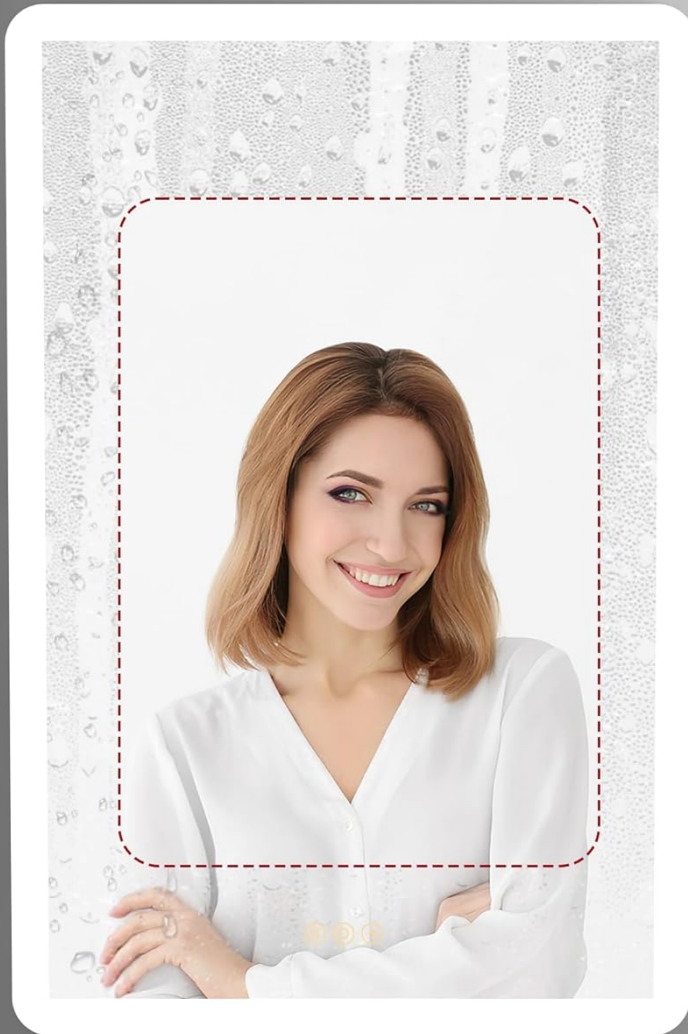


Figure 3.2: Illustration of the hardwired connection. A wall switch is not included and must be installed separately if desired.

4. OPERATING INSTRUCTIONS

The HBEZON LED Medicine Cabinet features intuitive touch controls for its various functions.

4.1 Touch Controls



Anti-Fog Function

Enjoy clear reflections instantly with built-in defogger, ensuring a fog-free mirror even in steamy conditions.

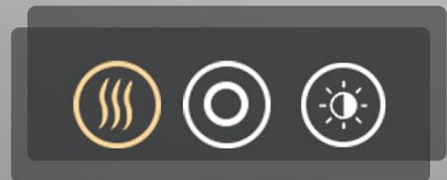


Figure 4.1: The touch panel on the mirror controls lighting and anti-fog functions. Internal features include electrical outlets and USB ports.

4.2 Lighting Modes & Brightness

The mirror offers three distinct color temperatures and adjustable brightness.

Video 4.1: Official product video demonstrating the HBEZON LED Medicine Cabinet's features, including lighting modes, storage, and anti-fog capabilities.

- **Power On/Off:** Tap the power icon on the mirror to turn the lights on or off.
- **Change Color Temperature:** Tap the color temperature icon to cycle through Warm Light (2700K), Neutral Light (4000K), and Cold Light (6500K). The mirror has a memory function that recalls your last setting.

Adjustable Brightness

Long press to adjust brightness from 10% to 100%

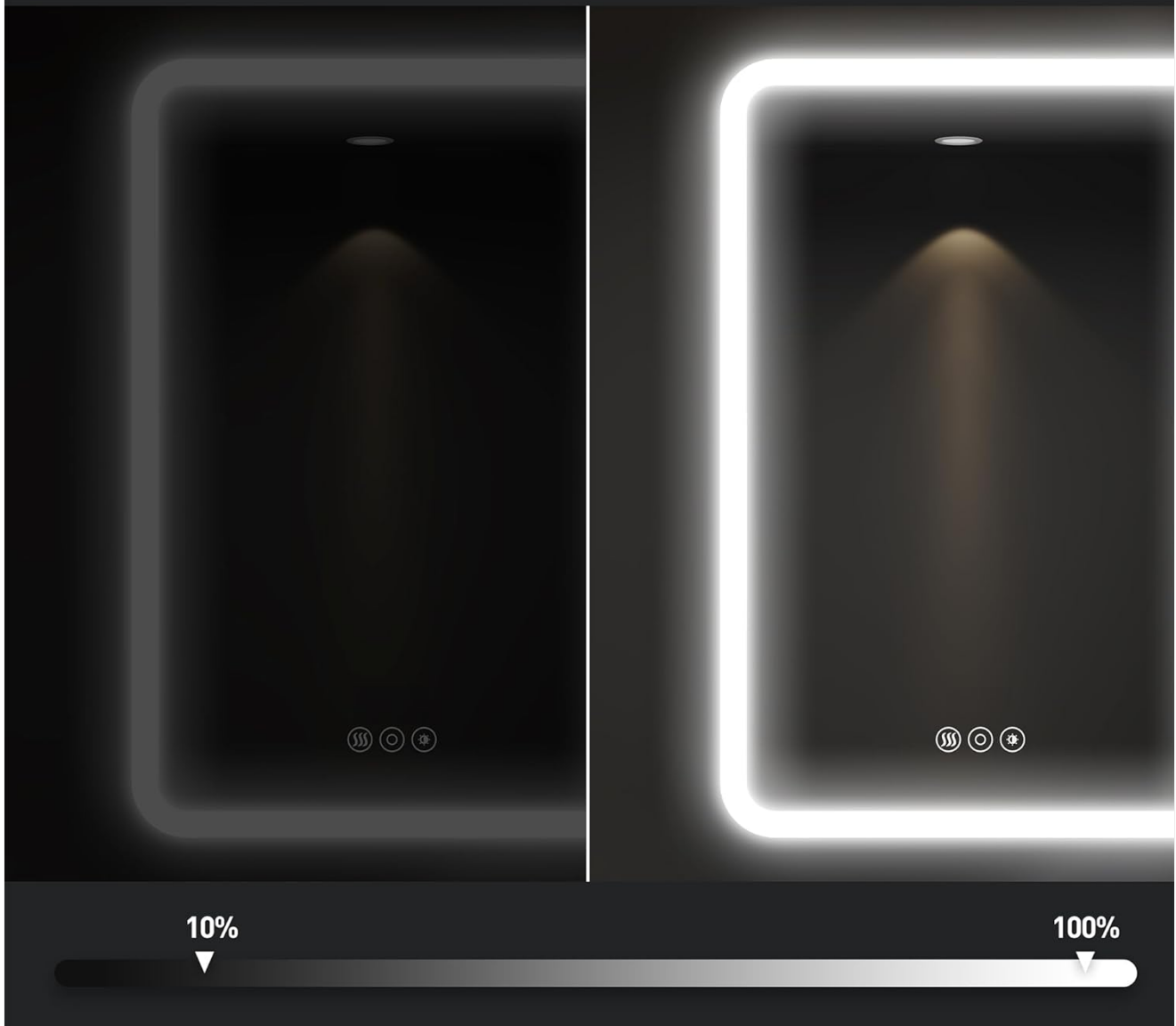


Figure 4.2: Visual representation of the three available color temperatures for the LED lighting.

- **Adjust Brightness:** Long-press the brightness icon to adjust the light intensity from 10% (dimpest) to 100% (brightest). Release when the desired brightness is reached.

Combining safety with practicality



Figure 4.3: Demonstration of the dimmable function, showing the range from 10% to 100% brightness.

4.3 Anti-Fog Function

Activate the anti-fog feature to maintain a clear reflection, especially after hot showers.

- **Activate/Deactivate:** Tap the anti-fog icon on the mirror to turn the defogger on or off. For energy efficiency, turn off the anti-fog function when not needed.



Figure 4.4: The anti-fog feature ensures a clear mirror surface even in humid conditions.

4.4 Internal Power Outlets & USB Ports

The cabinet includes internal electrical outlets and USB ports for convenient charging of small appliances and devices.

- Locate the outlets and USB ports inside the cabinet.
- Plug in your devices as needed. Ensure the cabinet door is closed gently to avoid damaging cords.

5. MAINTENANCE

Regular maintenance ensures the longevity and optimal performance of your medicine cabinet.

5.1 Cleaning the Mirror

- Use a soft, damp cloth with a mild glass cleaner.
- Avoid abrasive cleaners or harsh chemicals that may damage the mirror surface or LED components.
- Do not spray cleaner directly onto the mirror; apply it to the cloth first.

5.2 Cleaning the Cabinet Interior

- Wipe down interior surfaces with a soft, damp cloth.
- For stubborn stains, use a mild, non-abrasive household cleaner.
- Ensure all surfaces are dry before closing the cabinet.

5.3 Shelf Adjustment

The tempered glass shelves are adjustable and removable to accommodate items of various heights.

- To adjust, carefully lift the shelf and reposition it into the desired slots.
- Ensure shelves are securely seated before placing items on them.

6. TROUBLESHOOTING

Refer to the table below for common issues and their solutions.

Table 6.1: Troubleshooting Guide

Problem	Possible Cause	Solution
LED lights do not turn on.	No power supply; loose electrical connection; faulty LED driver.	Check circuit breaker. Verify electrical connections. Contact a qualified electrician if issues persist.
Anti-fog function not working.	Anti-fog function is off; electrical issue.	Tap the anti-fog icon to activate. Check power supply.
Touch controls are unresponsive.	Temporary software glitch; power interruption.	Turn off power at the circuit breaker for 1 minute, then restore. Ensure hands are clean and dry when using touch controls.
Internal outlets/USB ports not working.	No power to the cabinet; internal switch off.	Check cabinet power. Ensure any internal switches for outlets are in the ON position.

7. PRODUCT SPECIFICATIONS

Table 7.1: Technical Specifications

Feature	Detail
Brand	HBEZON
Model Number	2028R
Model Name	AURA
Product Dimensions (D x W x H)	5"D x 20"W x 28"H
Material	Aluminum, Mirror, Tempered glass
Color	Silver (Frame), Brown/Bronze (Hardware)

Feature	Detail
Lighting Modes	Warm (2700K), Natural (4000K), Cold White (6500K)
Brightness	Dimmable (10% to 100%)
Special Features	Smart Touch Control, Lighting Memory Function, Defogger, Soft-close Hinges, Electrical Outlet & USB Port, Adjustable Shelves
Number of Shelves	2 (Adjustable & Removable)
Mounting Type	Wall Mount and Recessed Mount
Weight Capacity	60 Pounds
Certifications	ETL Listed
Power Source	Hardwired

8. WARRANTY AND SUPPORT

HBEZON products are manufactured to high-quality standards. For specific warranty details, please refer to the warranty card included with your purchase or contact HBEZON customer support.

8.1 Customer Support

If you have any questions, require technical assistance, or need to report a problem, please contact HBEZON customer support through the retailer where the product was purchased or visit the official HBEZON website for contact information.

Please have your model number (2028R) and purchase date available when contacting support.