

ecomoment GT801

ecomoment GT801 Dash Cam Front and Rear User Manual

Model: GT801

1. INTRODUCTION

Thank you for choosing the ecomoment GT801 Dash Cam. This device is designed to record your driving journey in high definition, providing crucial evidence in unexpected situations and enhancing your overall driving safety. This manual provides detailed instructions for installation, operation, maintenance, and troubleshooting to ensure optimal performance of your dash cam.

2. SAFETY INFORMATION

- Ensure the dash cam is installed in a location that does not obstruct the driver's view or interfere with vehicle safety features.
- Use only the provided power cable and accessories to prevent damage to the device or vehicle.
- Do not attempt to disassemble or modify the dash cam. Unauthorized modifications will void the warranty.
- Avoid exposing the device to extreme temperatures, direct sunlight for prolonged periods, or excessive moisture.
- Regularly check that the dash cam is securely mounted and functioning correctly.

3. PACKAGE CONTENTS

Please verify that all items listed below are present in your package:

- Dash camera ×1
- Rear camera (6M/20ft) ×1
- Electrostatic films ×4
- Car Charging Cable (5V/1.5A) ×1
- Storage card ×1 (64GB MicroSD card)
- Cable clips ×5
- Pry tool ×1
- User manual ×1

In The Box



Note: Check the box for each of the following items before installing the dash cam.



Dash camera ×1



Rear camera (6m/20ft) ×1



Car Charging Cable(5V/1.5A) ×1



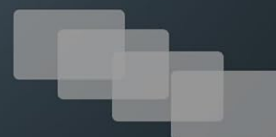
**Cable clips ×5
Pry tool ×1**



Storage card ×1



User manual ×1



Electrostatic films ×4

Figure 3.1: All components included in the ecomoment GT801 Dash Cam package, including the main dash camera, rear camera, charging cable, MicroSD card, electrostatic films, cable clips, pry tool, and user manual.

4. PRODUCT OVERVIEW

The ecomoment GT801 is a dual dash camera system featuring a front camera with 4K resolution and a rear camera with 1080P resolution. It includes advanced features such as built-in Wi-Fi, GPS functionality, G-sensor, loop recording, night vision, and parking monitoring.



Figure 4.1: An overview of the ecomoment GT801 Dash Cam, showing the main front camera unit, rear camera, car charger, and included 64GB MicroSD card.

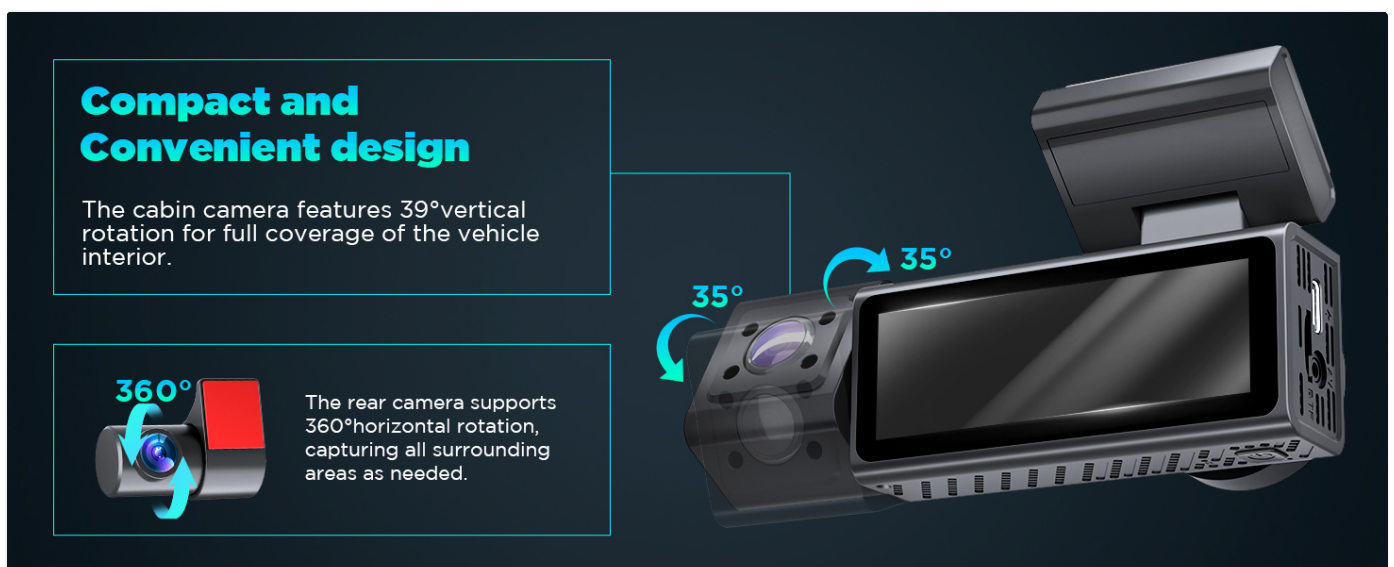


Figure 4.2: The compact design of the dash cam, highlighting the 39° vertical rotation for the cabin camera and 360° horizontal rotation for the rear camera, allowing comprehensive coverage.

5. SETUP AND INSTALLATION

5.1 MicroSD Card Installation

Insert the provided MicroSD card into the designated slot on the dash cam. Ensure the card is inserted correctly until it clicks into place. A 64GB MicroSD card is included, and the device supports up to 128GB.



24HR Parking Monitoring

Parking Monitoring Modes

Collision Detection
Records 1-minute locked emergency video after collision.

Time-lapse Recording
Continuous 1fps recording after parking.

Built-in G-sensor
The system instantly activates upon collision detection and automatically locks critical video evidence to ensure security.

Note: ① Parking Monitoring mode requires Hardwire kit(hardwired kit connection to the vehicle battery).
② Hardwire kit is not included.

Figure 5.1: Illustration of how to insert the MicroSD card into the dash camera's slot. The image also shows the USB-C and AV ports.

5.2 Dash Cam Mounting

Follow these steps for proper installation:

1. **Front Cam Mounting:** Position the main dash cam unit on your windshield using the provided electrostatic sticker. Choose a location that does not obstruct your driving view.

2. **Rear Cam Placement:** Attach the rear camera to the rear window using its electrostatic sticker. Ensure a clear view of the road behind.
3. **Cable Routing:** Carefully tuck the power cable and rear camera cable under the vehicle's weatherstrip and trim using the included pry tool. This keeps the cables neat and out of the way.
4. **Power Up:** Plug the car charging cable into your vehicle's cigarette lighter outlet to activate the dash cam.



Figure 5.2: Visual guide for installing the dash cam, showing front camera mounting, rear camera placement, cable routing, and connecting to the car's power outlet.

6. OPERATING INSTRUCTIONS

6.1 Basic Operation

- **Power On/Off:** The dash cam will automatically power on and begin recording when your vehicle starts. It will power off automatically when the vehicle is turned off.
- **Recording:** The dash cam continuously records video from the front and rear cameras. The front camera records in 4K, and the rear camera records in 1080P.

Three channel real-time synchronized HD recording

Porcelain touching, accidents, scratching the body, and disputes in the car can be recorded to restore the real scene.



Figure 6.1: Display showing simultaneous recording from the front (4K), cabin (1K), and rear (1K) cameras, illustrating the wide-angle coverage.

6.2 Loop Recording

The dash cam utilizes loop recording. When the MicroSD card is full, the oldest unlocked video files will be overwritten by new recordings. This ensures continuous recording without manual intervention.

6.3 G-Sensor and Emergency Lock

The built-in G-sensor detects sudden impacts or collisions. When an event is detected, the current video segment is automatically locked and saved to a protected folder, preventing it from being overwritten by loop recording. This feature ensures critical footage is preserved.



Figure 6.2: The Emergency Lock function, which automatically saves critical footage upon collision detection or via voice command, ensuring important video evidence is secured.

6.4 Parking Monitoring

The GT801 offers 24-hour parking monitoring with two modes:

- **Collision Detection:** Records a 1-minute locked emergency video after a collision is detected while parked.
- **Time-lapse Recording:** Provides continuous 1fps recording after parking, condensing long recordings into accelerated clips.

Note: Parking Monitoring requires a hardwire kit (not included) for continuous power connection to the vehicle battery.



Figure 6.3: Illustration of the 24-hour parking monitoring feature, detailing collision detection and time-lapse recording, both activated by the built-in G-sensor.

6.5 Advanced GPS Functionality

The integrated GPS functionality allows for accurate tracking and playback of your driving routes. You can monitor speed, location, and route history on compatible computers and mobile phones, providing additional context for recorded footage.

6.6 Superior Night Vision

The GT801 dash cam features a starlight night vision sensor and a 170° ultra-wide angle 6-layer glass lens. This technology ensures clear and detailed footage even in low-light conditions, enhancing visibility during nighttime driving.

Free MicroSD Card & OTA

Receive
a free 64GB
microSD card

OTA (Over-the-Air) update support



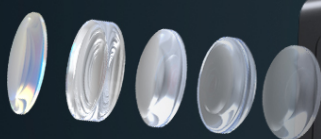
Save the downloaded firmware file (it must be the correct version provided by the official) directly to the microSD card, and upgrade it after the device is powered on.



Figure 6.4: The dash cam's display showing clear night vision footage, highlighting its ability to capture details in low-light environments.

Night Vision

The GC4635 imaging sensor integrated with the SA230 SoC delivers 26Mbps bitrate at 30fps frame rate, combining high-definition imaging with advanced H.264 encoding. This architecture ensures 24/7 operational stability while achieving superior low-light performance.



6-layer glass lens



Figure 6.5: A close-up of the dash cam's lens assembly, emphasizing the 6-layer glass lens and starlight night vision sensor for enhanced low-light performance.

6.7 Wi-Fi and Smart App Control

Connect the GT801 dash cam to your smartphone via Wi-Fi using the "VeeCar" app (available on App Store and Google Play). The app allows you to:

- View live footage.
- Playback recorded videos.
- Manage dash cam settings.
- Download and edit videos.
- Share content directly from the app.

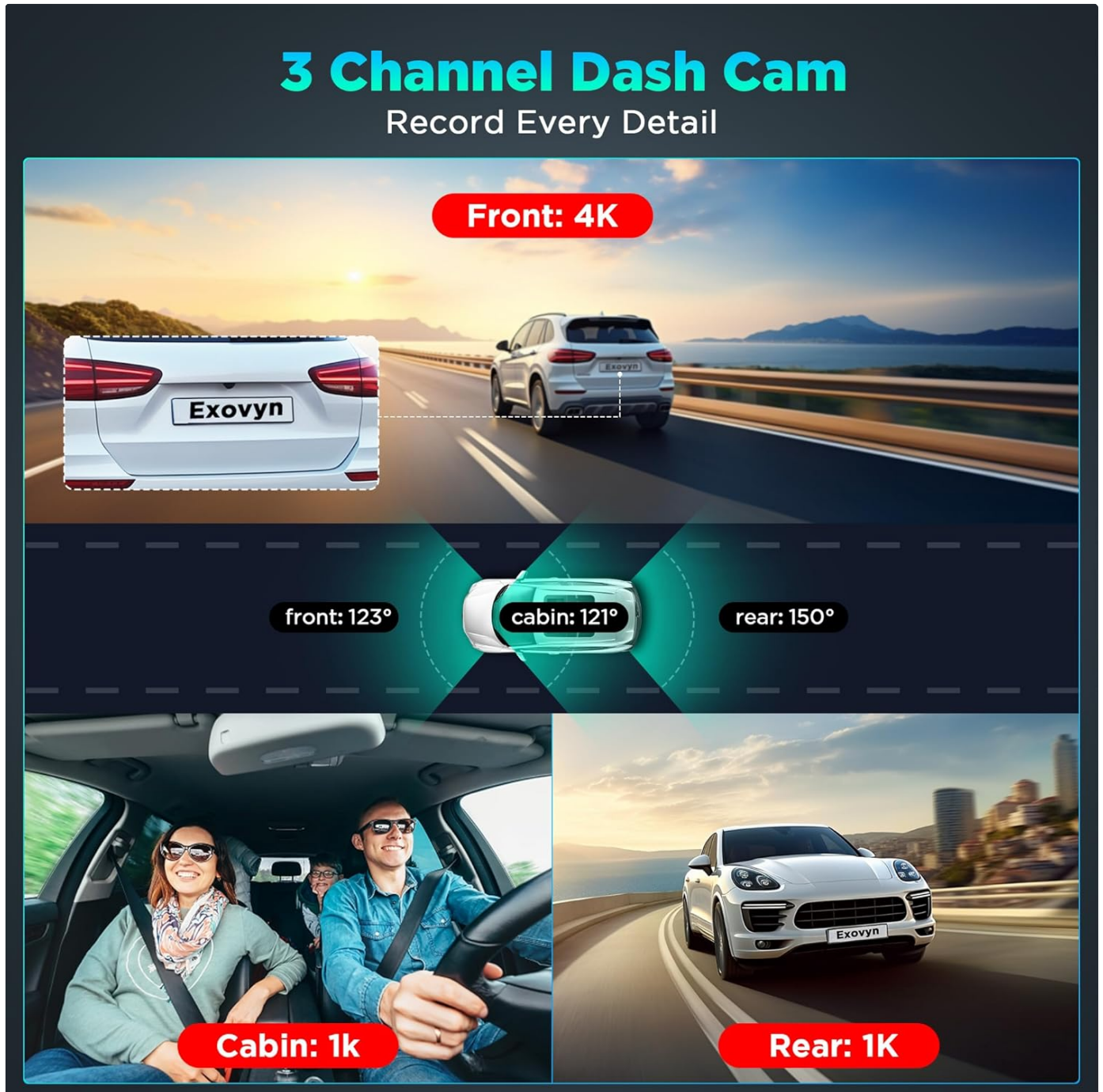


Figure 6.6: A smartphone displaying the "Kacam APP" interface, demonstrating how to wirelessly access real-time footage, download clips, and adjust settings via Wi-Fi.

6.8 Voice Control

The dash cam supports voice commands for hands-free operation. Commands include:

- "Emergency recording" to lock current video.
- "Show rear camera"
- "Show front camera"
- "Look the video"
- "Take photo"
- "Turn on audio"
- "Turn on screen"



Figure 6.7: A driver interacting with the dash cam using voice commands, illustrating the hands-free control for various functions.

7. MAINTENANCE

7.1 Cleaning

Gently wipe the camera lenses and screen with a soft, dry cloth. Avoid using abrasive cleaners or solvents that could damage the device.

7.2 MicroSD Card Management

It is recommended to format the MicroSD card periodically (e.g., once a month) to maintain optimal recording performance and prevent data corruption. This can usually be done through the dash cam's settings menu or the mobile app.

7.3 Firmware Updates (OTA)

The dash cam supports Over-the-Air (OTA) firmware updates. To update, save the official firmware file (provided by ecomoment) directly to the MicroSD card. The device will automatically initiate the upgrade process upon power-up.

8. TROUBLESHOOTING

- **Dash cam does not power on:**
Ensure the car charger is securely plugged into both the dash cam and the vehicle's power outlet. Check the vehicle's power outlet for functionality.
- **Recording stops or footage is corrupted:**
Format the MicroSD card. Ensure you are using a high-speed (Class 10 or U3 recommended) MicroSD card. Replace the MicroSD card if the issue persists.

- **Wi-Fi connection issues:**

Ensure Bluetooth is turned off on your smartphone as it may interfere with the Wi-Fi connection. Make sure you are within 10 feet of the dash cam. Restart both the dash cam and your smartphone.

- **Parking monitoring not working:**

Verify that a hardwire kit is correctly installed and connected to your vehicle's battery. Ensure parking monitoring is enabled in the dash cam settings.

- **GPS signal not found:**

Ensure the dash cam has a clear view of the sky. Move the dash cam away from any metallic objects or electronic devices that might interfere with the GPS signal.

- **Poor video quality:**

Clean the camera lenses. Ensure the protective film has been removed from the lenses. Check the video resolution settings in the app or on the device.

9. SPECIFICATIONS

Model Name	GT801
Product Dimensions	1.6 x 2.2 x 4 inches
Item Weight	3.52 ounces
Video Capture Resolution	Front: 4K, Rear: 1080P
Field Of View	135 Degrees (Front), 170° (Lens)
Connectivity Technology	USB, Wi-Fi
Special Features	Loop Recording, Built-In WiFi, Night Vision, G-Sensor, Emergency Lock, Parking Monitor, App Control, Voice Control, Built-In Supercapacitor, Built-In Microphone, Compact Design, Built-In Display
Mounting Type	Windshield Mount
Color	Vivid Black
Manufacturer	ecomoment

10. WARRANTY AND SUPPORT

ecomoment provides a **10-year free warranty** for the GT801 Dash Cam. Additionally, lifetime professional technical support is available to assist you with any questions or issues you may encounter. For support, please refer to the contact information provided with your product or visit the official ecomoment website.

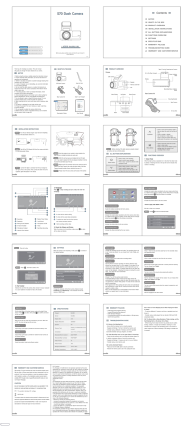


Related Documents - GT801



[Ecomoment GT802 Dual Dash Camera User Manual](#)

User manual for the Ecomoment GT802 4K+1080P dual dash camera for cars, featuring built-in WiFi, GPS, a 2.4" IPS screen, 170° wide-angle view, night vision, WDR, G-sensor, and includes a 32GB SD card.



[Ecomoment S70 Dash Cam User Manual](#)

User manual for the Ecomoment S70 dual dash camera system, featuring 2.5K front and 1080P rear recording, a 3.16-inch IPS screen, 170° wide angle, night vision, G-sensor, and 24-hour parking monitoring.



[GOODIX Guitar Capacitive Touch Screen Controller IC Datasheet](#)

Datasheet for the GOODIX Guitar series (GT800, GT801, GT801*2+ARM) multi-point capacitive touch screen controller ICs, detailing features, specifications, electrical characteristics, and application circuits.



[Ambiano 9-in-1 Programmable Pressure Cooker User Manual](#)

User manual for the Ambiano 9-in-1 Programmable Pressure Cooker (Model GT801-M091). Contains instructions for setup, operation, safety, cleaning, and troubleshooting.