

## Manuals+

[Q & A](#) | [Deep Search](#) | [Upload](#)

manuals.plus /

- › [SOLITY](#) /
- › [Solity GT10BK Smart Digital Door Lock User Manual](#)

## SOLITY GT10

# Solity GT10BK Smart Digital Door Lock User Manual

Model: GT10 | Brand: SOLITY

## 1. INTRODUCTION

This manual provides detailed instructions for the installation, setup, operation, and maintenance of your Solity GT10BK Smart Digital Door Lock. Please read this manual thoroughly before installation and use to ensure proper function and safety. The Solity GT10BK offers multiple access methods including fingerprint, PIN codes, app control, one-time codes, and traditional keys, designed for convenient and secure entry.



Figure 1: Solity GT10BK Smart Digital Door Lock with its exterior, interior, and mobile application interface.

## 2. SAFETY INFORMATION

- Read all instructions before installing and using the product.
- Do not attempt to disassemble or modify the lock. This may cause damage and void the warranty.
- Use only specified batteries (Alkaline AA). Do not mix old and new batteries or different types of batteries.
- Keep traditional keys in a safe, accessible location outside the property for emergency backup.
- Change the default administrator PIN code immediately after installation.
- Ensure proper cable routing during installation to prevent pinching or damage.

## 3. PRODUCT OVERVIEW

---

### 3.1. Components

The Solity GT10BK Smart Digital Door Lock package includes the following components:

- Exterior Body (with touchscreen keypad and fingerprint sensor)
- Interior Body (with thumbturn and battery compartment)
- Mounting Plate
- Deadbolt
- Strike Plate
- Dust Box
- Screws (various sizes for installation)
- AA Batteries (not included, 4 required)
- Traditional Keys (2 provided)
- Reset Pin
- Drilling Template
- Paper Manual
- Magnet Bracket Sensor (for auto-lock feature)

### 3.2. Key Features

- **5-in-1 Keyless Entry:** Fingerprint, PIN codes, app control, one-time codes, and traditional keys.
- **Fast Fingerprint Recognition:** Grants access in approximately 0.3 seconds.
- **Auto-Lock Security:** Adjustable auto-lock feature from 5 to 180 seconds.
- **Seamless Smart Home Integration:** Compatible with Amazon Alexa and SmartThings, no additional hub required.
- **Remote App Management:** Control and monitor your lock remotely via the dedicated app.
- **Durable Design:** IP54 certified for dust and water resistance, tested for extreme temperatures and force.
- **Multilingual Voice Assistance:** Supports English, Spanish, and French.

## 4. INSTALLATION

---

The Solity GT10BK is designed for easy installation on standard American doors, suitable for both left and right-handed orientations. Refer to the installation video and the provided drilling template for precise measurements.

### 4.1. Compatibility Check

Before starting installation, ensure your door meets the following specifications:

- **Door Thickness:** 1-3/8" to 2" (35-50mm)
- **Door Hole (Diameter):** 2-1/8" (54mm)
- **Backset:** 2-3/8" or 2-3/4" (60mm or 70mm)

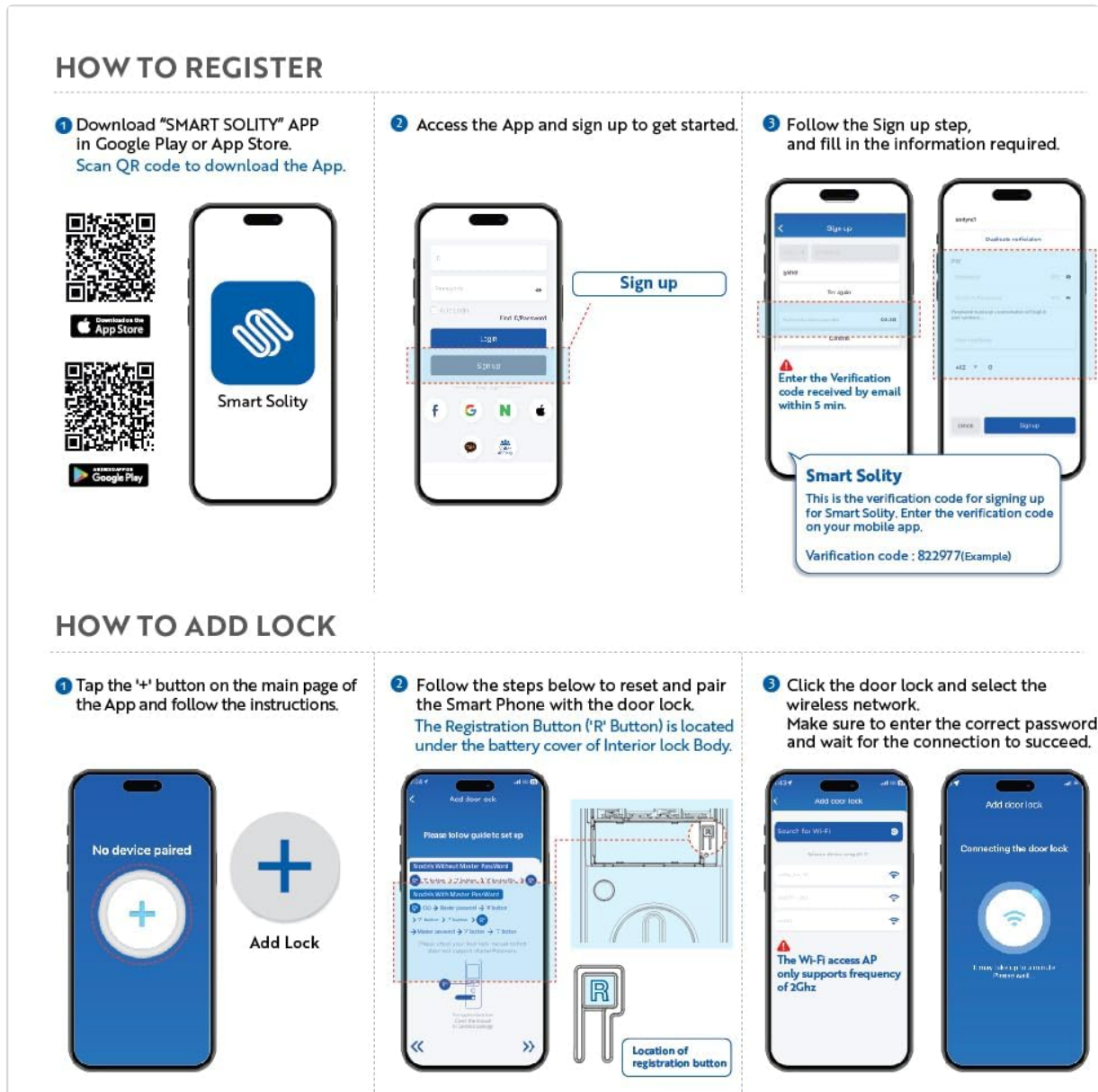


Figure 2: Door compatibility and dimension requirements for installation.

## 4.2. Installation Steps

For a visual guide, please watch the official installation video:

*Video 1: Solity GT10BK/GT10K Installation Guide. This video demonstrates the step-by-step process for installing the smart door lock.*

1. **Prepare the Door:** Use the provided drilling template to mark and drill holes if necessary. Ensure the existing deadbolt is removed.
2. **Install Deadbolt:** Insert the deadbolt into the door edge. Ensure the 'TOP' marking on the deadbolt is facing upwards. Adjust the backset if needed (70mm by twisting the neck while holding the body).
3. **Install Exterior Body:** Keep the key tail in the unlocked position. If the door hole is less than 2-1/8" (54mm), remove the adapter ring by unscrewing the two screws on either side. Lay the cable under the deadbolt, ensuring it is not twisted or pinched.

4. **Install Mounting Plate:** Secure the mounting plate to the door using the appropriate screws. Ensure the cable passes through the plate without obstruction.
5. **Install Interior Body:** Connect the cable from the exterior body to the interior body. Check that the knob points in the same direction as the key tail. Secure the interior body to the mounting plate using the provided screws.
6. **Test Key and Thumbturn:** Insert a traditional key and turn it to ensure smooth operation of the deadbolt. Test the thumbturn on the interior body. If the deadbolt does not lock or unlock smoothly, recheck the tailpiece insertion.
7. **Insert Batteries and Attach Cover:** Insert 4 AA alkaline batteries into the interior body. Attach the battery cover. The keypad should light up.
8. **Install Door Sensor:** Attach the magnet bracket sensor to the door frame within 1" x 2" of the lock. Ensure the sensor is operational and secure with screws. (Note: Installation is not recommended on iron doors).

## 5. SETUP AND PROGRAMMING

---

After physical installation, proceed with programming your lock for secure and convenient access. The default administrator PIN code is **123456**. It is highly recommended to change this immediately.

### 5.1. App Download and Connection

To utilize the smart features, download the 'SMART SOLITY' app from Google Play or the App Store.



Figure 3: Steps to download the Smart Solity app and add your lock. [Download on the App Store](#)  
For a visual guide on app connection, please watch the official video:

*Video 2: How to download the app and connect to the Solity GT10BK device.*

## 5.2. Programming Guide

For a visual guide on programming, please watch the official programming video:

*Video 3: Solity GT10BK/GT10K Programming Guide. This video covers changing administrator PIN, adding user PINs, one-time PINs, and fingerprints.*

- **Change Administrator PIN Code:**

Press **R** > Enter **Administrator PIN code** > # > 0 > Enter **New Administrator PIN code (6-12 digits)** > #

- **Add User PIN Code:**

Press **R** > Enter **Administrator PIN code** > # > 1 > Enter **New User PIN code (4-12 digits)** > #  
(Note: Enter additional user PIN codes before keypad light turns off. Press an address code 1-4 before entering new user PIN code and deleting PIN code stored in this location individually later.)

- **Add One-Time PIN Code:**

Press **R** > Enter **Administrator PIN code** > # > 4 > Enter **One-time PIN code (6 digits)** > #



(Note: One-time PIN code will go invalid after using it to open the door once.)

- **Add Fingerprints (GT10BK only):**

Press **R** > Enter **Administrator PIN code** > **#** > **3** > Place **New Fingerprint** on the sensor 3 times.

(Note: Enter additional fingerprints before keypad light turns off. Press an address code 1-100 before entering new user fingerprint and deleting fingerprint stored in this location individually later.)

- **Delete User PIN Code:**

Press **R (3 SEC)** > Enter **Administrator PIN code** > **#** > **1** > Press **address code 1-4** to delete individual user PIN code > \*

OR Press **#** > **3** > **SEC** to delete all user PIN codes.

- **Delete One-Time PIN Code:**

Press **R (3 SEC)** > Enter **Administrator PIN code** > **#** > **4** > \*

- **Delete User Fingerprint:**

Press **R (3 SEC)** > Enter **Administrator PIN code** > **#** > **3** > Press **address code 1-100** to delete individual user fingerprint > \*

OR Press **#** > **3** > **SEC** to delete all user fingerprints.

## 6. OPERATING INSTRUCTIONS

### 6.1. Access Methods



Figure 4: Various access methods including fingerprint, PIN code, and traditional key.

- **Fingerprint:** Place your registered finger on the sensor. The lock will unlock in approximately 0.3 seconds.
- **PIN Code:** Enter your registered PIN code on the touchscreen keypad, followed by '#'.
- **App Control:** Use the 'SMART SOLITY' app to remotely lock or unlock your door.
- **Traditional Key:** Insert the physical key into the keyhole and turn to unlock.

## 6.2. Auto-Lock Features



Figure 5: Auto-lock features including timed auto-lock, door sensor, and silent mode.

- **Timed Auto-Lock:** The lock can be set to automatically lock after a period of 5-180 seconds. To enable/disable or set the time, refer to the programming video.
- **Door Sensor Detection:** With the magnetic door sensor installed, the lock detects when the door is closed and instantly locks.
- **Silent Mode:** Activate silent mode for noise-free operation during quiet entry and exit.

## 6.3. Multilingual Voice Assistance



*Figure 6: Multilingual voice assistance supporting English, Spanish, and French.*

The lock provides premium voice assistance in English, Spanish, and French for operational guidance and alerts. Refer to the programming video for changing the voice guide language.

#### **6.4. Remote App Management**



# Remote App Management

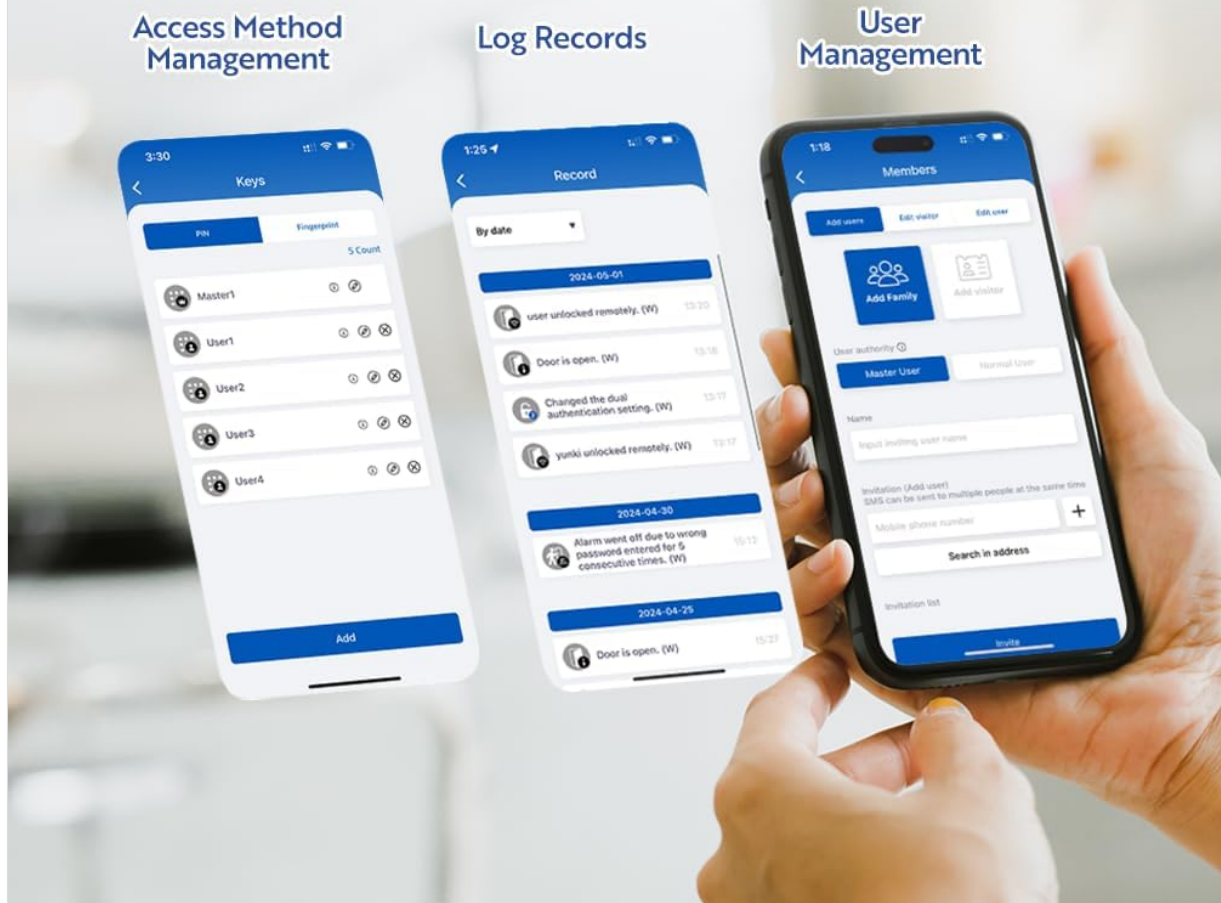


Figure 7: Screenshots of the mobile app for access management, log records, and user management. The 'SMART SOLITY' app allows you to:

- Manage access methods (fingerprints, PINs).
- View log records of all entries and exits.
- Manage users, including adding/deleting users and setting temporary access.
- Receive real-time activity alerts and low battery notifications.

*Video 4: Solity No-Hub Smart Digital Door Lock Wi-Fi Remote Control features, demonstrating app functionality and remote access.*

## 7. MAINTENANCE

### 7.1. Battery Replacement

The Solity GT10BK requires 4 AA alkaline batteries. When the battery level is low, you will receive a notification via the app and the lock will provide an audible alert. To replace batteries:

1. Remove the battery cover on the interior body.
2. Remove the old batteries.
3. Insert 4 new AA alkaline batteries, ensuring correct polarity.

4. Replace the battery cover.

7.2. Cleaning

To clean the lock, use a soft, dry cloth. Do not use abrasive cleaners, solvents, or harsh chemicals, as these can damage the finish and electronic components.

8. TROUBLESHOOTING

- **Lock not responding:** Check battery levels and replace if necessary. Ensure the lock is properly installed and all cables are connected.
- **PIN code not working:** Verify the PIN code is correct. Ensure the lock is not in silent mode if expecting audible feedback. Re-register the PIN code if issues persist.
- **Fingerprint not recognized:** Ensure your finger is clean and dry. Try re-registering your fingerprint.
- **App connectivity issues:** Ensure your home Wi-Fi is stable and the lock is within range. Restart the app and try reconnecting.
- **Auto-lock not functioning:** Verify the door sensor is correctly installed and aligned. Check auto-lock settings in the app or via programming.

9. SPECIFICATIONS

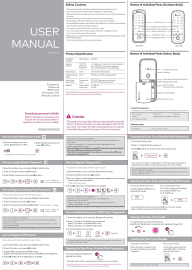
Feature	Detail
Brand	SOLITY
Model Name	GT10
Lock Type	Biometric, Combination Lock, Deadbolt, Keypad
Special Features	Anti-Peeping Password, Back-Lit Keypad, Battery Indicator, Fingerprint, Weather Resistant
Material	Zinc
Item Dimensions (L x W x H)	11.1 x 5.51 x 4.84 inches
Item Weight	4.73 pounds (2.15 Kilograms)
Connectivity Protocol	Wi-Fi
Controller Type	Amazon Alexa, iOS, Android
Power Source	Batteries (4 x AA Alkaline, not included)
IP Rating	IP54 (Dust and Water Resistant)
Recommended Uses	Residential doors (indoor and outdoor)

10. WARRANTY AND SUPPORT

Solity stands behind its products with dedicated customer service available around the clock. For any inquiries or assistance, please contact our support team. We are committed to ensuring you have the

support you need, whenever you need it.

## Related Documents - GT10

	<p><a href="#">Solity Smart Lock PTMPB400ONTA User Manual</a></p> <p>Comprehensive user manual for the Solity Smart Lock PTMPB400ONTA, covering operation, password management, safety precautions, and troubleshooting.</p>
	<p><a href="#">Solity GD-60B/GD-65B Smart Door Lock User Manual</a></p> <p>Comprehensive user manual for Solity GD-60B and GD-65B smart door locks, covering safety precautions, product specifications, part identification, operational instructions for registration, access methods, security features, troubleshooting, and emergency battery usage.</p>
	<p><a href="#">Solity GP-6000BAK/GP-6000BK Smart Lock User Manual</a></p> <p>Comprehensive user manual for the Solity GP-6000BAK and GP-6000BK push/pull smart door locks, covering installation, operation, registration, and troubleshooting.</p>
	<p><a href="#">Solity PTMP7680ONTA Push/Pull Smart Lock User Manual</a></p> <p>Comprehensive user manual for the Solity PTMP7680ONTA Push/Pull Smart Lock, covering safety, specifications, part identification, registration, operation, locking, alarms, and troubleshooting.</p>
	<p><a href="#">GO DIGITALLOCK GR-50BK Digital Door Lock User Manual</a></p> <p>Comprehensive user manual for the GO DIGITALLOCK GR-50BK digital door lock, detailing features, operation, security settings, and troubleshooting for keyless entry.</p>