

WRVVR YW100A

WRVVR Magnetic Wireless Charger User Manual

Model: YW100A

Brand: WRVVR

1. INTRODUCTION

Thank you for choosing the WRVVR Magnetic Wireless Charger. This manual provides essential information for the safe and efficient use of your new device. Please read it thoroughly before use and retain it for future reference.

2. PACKAGE CONTENTS

- 2 x Magnetic Wireless Chargers
- 1 x User Manual

Note: USB power adapter and plug are not included.

3. SPECIFICATIONS

Feature	Detail
Model Number	YW100A
Product Dimensions	2.2 x 2.2 x 0.22 inches

Item Weight	4.2 ounces
Connector Type	USB Type C
Input Voltage	9 Volts
Wattage	15 watts
Special Features	Ultra Thin and Light, Strong Magnetic Alignment, Metal Design

4. COMPATIBILITY

This magnetic wireless charger is designed for optimal compatibility with:

- iPhone 17/17 Pro/17 Pro Max/Air
- iPhone 16/16 Plus/16 Pro/16 Pro Max
- iPhone 15/15 Plus/15 Pro/15 Pro Max
- iPhone 14/14 Plus/14 Pro/14 Pro Max
- iPhone 13/13 Pro/13 Pro Max/13 mini
- iPhone 12/12 Pro/12 Pro Max/12 Mini
- AirPods 4/3/2/Pro (with wireless charging case)

Important Note:

For proper magnetic attachment and charging, your iPhone must either be used without a case or with a Mag-Safe compatible case. A standard phone case may weaken the magnetic connection and prevent proper charging.

High Quality Metal Alloy



Metal Durable



Heat Dissipation



Stain-resistant



Sleeker



This diagram illustrates the universal compatibility of the charger with various iPhone series and AirPods, emphasizing the need for magnetic cases for optimal performance.

5. SETUP

1. **Choose a Power Adapter:** For optimal fast charging, use an 18W/20W or higher power adapter (USB adapter and plug not included). The charger connects via USB Type-C. An included adapter allows conversion to a standard USB-A port if needed.
2. **Connect the Charger:** Plug the USB Type-C end of the magnetic wireless charger into your chosen power adapter.

3. **Prepare Your Device:** Ensure your iPhone is either without a case or is using a Mag-Safe compatible case.
4. **Attach the Charger:** Place the magnetic charging pad onto the back of your compatible iPhone or AirPods case. The charger features auto-alignment and strong magnets to ensure a secure connection.

Choose the Right Adapter

Please use 18W/20W or higher power adapter

Not included



This image demonstrates connecting the magnetic charger to a USB-C power adapter, highlighting the need for a separate adapter.

Your browser does not support the video tag.

This video provides an overview of the WRVVR Magnetic Wireless Charger, including its unboxing and initial setup, demonstrating how to connect the charger and its magnetic attachment.

6. OPERATING INSTRUCTIONS

6.1 Magnetic Attachment

The charger features auto-alignment technology and robust magnetic hold, ensuring your iPhone or AirPods stay securely in place during charging. This prevents accidental disconnections, allowing you to use your device while it charges.



This image highlights the auto-alignment and strong magnetic force that keeps the device securely attached to the charger.

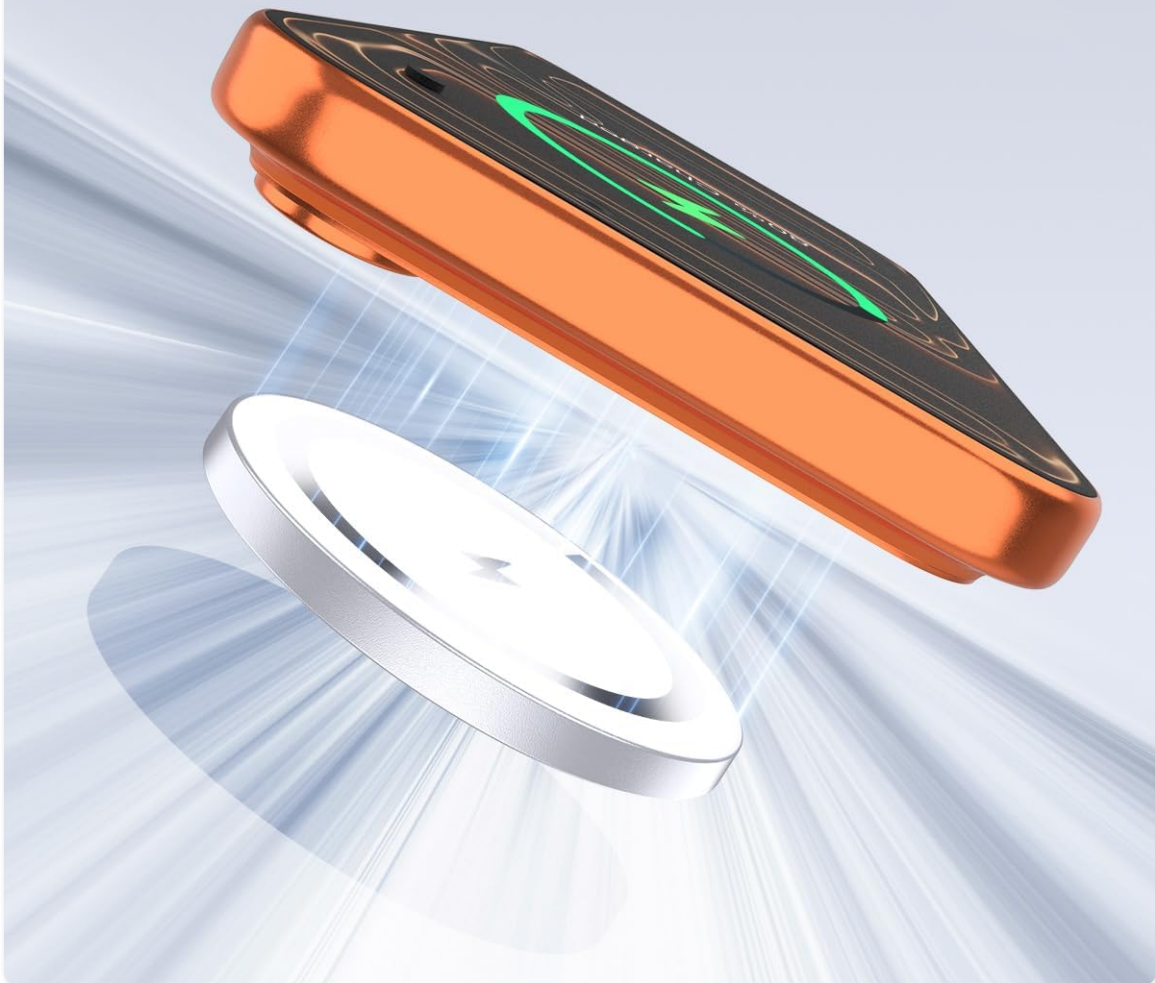
Your browser does not support the video tag.

This short video demonstrates the strong magnetic hold of the charger, showing how it securely attaches to a compatible iPhone.

6.2 Charging Performance

The WRVVR Magnetic Wireless Charger can quickly charge your iPhone up to 50% in approximately 30 minutes, and from 0% to 100% in about 2-2.5 hours, provided an 18W/20W or higher power adapter is used. This is significantly faster than standard 5W chargers.

Mag-Safe Charger



This image visually represents the fast charging capabilities of the magnetic wireless charger compared to other charging methods.

Your browser does not support the video tag.

This video demonstrates the charging speed of the magnetic wireless charger, highlighting its ability to achieve a 50% charge in 30 minutes.

6.3 Portability

With its ultra-thin and light design, this charger is easy to carry, making it suitable for use at home, in the office, during business trips, or while traveling.

Ultra Thin and Light



This image emphasizes the slim and lightweight design of the charger, making it convenient for portability.

Universal Compatibility



✓ iPhone Air/ 17/ 17 Pro Max/ 17 Pro / 17



✓ iPhone 16/ 15/ 14/ 13/ 12 Series



✓ Magnetic Cases



✓ Air Pods Pro 4/ 3/ 2, Air Pods 3/ 2
(With Wireless Charging Case)



This image illustrates the versatility of the charger, showing its use in different environments like an office desk or a bedside table.

7. SAFETY AND MAINTENANCE

7.1 Intelligent Safety Protection

The WRVVR Magnetic Wireless Charger is FCC, RoHS, and CE certified. It incorporates a built-in smart chip that provides comprehensive protection against:

- Over-current
- Over-voltage

- Short circuit
- Over-temperature

These protections safeguard your phone's battery from potential damage and ensure a safe charging experience.



This image highlights the intelligent safety features of the charger, including protection against overheating, overcharge, overcurrent, and short circuits.

7.2 Heat Dissipation

The charger features a high-quality aluminum alloy shell, which aids in better heat dissipation, contributing to lower operating temperatures during charging.

7.3 General Maintenance

- Keep the charger clean and free from dust and debris.

- Avoid exposing the charger to extreme temperatures or humidity.
- Do not attempt to disassemble or repair the charger yourself.

8. TROUBLESHOOTING

- **Device not charging:**

- Ensure the charger is properly connected to a functioning power adapter (18W/20W or higher recommended).
- Verify that your phone is compatible and is either without a case or using a Mag-Safe compatible case.
- Check for any obstructions between the charger and your device.

- **Slow charging speed:**

- Confirm you are using an 18W/20W or higher power adapter. Lower wattage adapters will result in slower charging.
- Ensure your phone case is Mag-Safe compatible; non-magnetic cases can hinder charging efficiency.

- **Charger or device overheating:**

- While the charger has over-temperature protection, excessive heat can occur in extreme conditions. Disconnect the charger and allow it to cool down.
- Ensure the charger is not covered or placed in an area with poor ventilation.

9. WARRANTY AND SUPPORT

For warranty information or technical support, please refer to the product packaging or contact WRVVR customer service through the retailer where the product was purchased. Keep your proof of purchase for any warranty claims.

© 2025 WRVVR. All rights reserved.
Made in China