

[Manuals.plus](#) /

› [Yaheetech](#) /

› Yaheetech Egg Rattan Chair User Manual

Yaheetech 614519

Yaheetech Egg Rattan Chair User Manual

Model: 614519

Brand: Yaheetech

PRODUCT OVERVIEW

The Yaheetech Egg Rattan Chair is an oversized, egg-shaped lounger designed for both indoor and outdoor use. It features a durable PE rattan basket, a sturdy metal frame stand, and four comfortable cushions. This chair is ideal for relaxation in various settings, including patios, balconies, backyards, and living rooms.



Image: Front view of the Yaheetech Egg Rattan Chair with black cushions, showcasing its unique egg shape and sturdy design.

SAFETY INFORMATION

Please read and understand all safety warnings before assembling and using the chair. Failure to follow these instructions may result in injury or damage to the product.

- Do not exceed the maximum weight capacity of 330 lbs (150 kg).
- Ensure the product is assembled correctly and all fasteners are tightened securely for safe use.
- Keep the chair away from direct heat sources to prevent damage to the PE rattan and polyester cushions.
- Be cautious of the chair's egg shape, which may cause tipping if not used properly.
- Adjust the foot pads to ensure stability on uneven ground.

PACKAGE CONTENTS

Before beginning assembly, verify that all parts listed below are present and undamaged. If any parts are missing or damaged, please contact customer support.

- Egg-shaped PE Rattan Basket (1)
- Metal Frame Stand Components (various)
- Seat Cushion (1)
- Back Cushion (1)
- Small Cushions (2)
- Assembly Hardware (bolts, washers, nuts, wrench)

ASSEMBLY INSTRUCTIONS

Follow these steps carefully to assemble your Yaheetech Egg Rattan Chair. It is recommended to have two people for assembly.

1. **Unpack Components:** Carefully remove all parts from the packaging and lay them out on a clean, soft surface to prevent scratching.
2. **Assemble the Base:** Connect the metal frame stand components according to the diagrams provided in the separate assembly sheet. Ensure all bolts are finger-tightened initially.
3. **Attach the Basket:** Carefully lift the egg-shaped rattan basket and align it with the pre-drilled holes on the assembled metal stand. Secure the basket to the stand using the provided hardware.
4. **Tighten All Fasteners:** Once the basket is securely attached to the stand, fully tighten all bolts and nuts using the provided wrench. Do not overtighten.
5. **Place Cushions:** Arrange the seat cushion, back cushion, and two small cushions inside the rattan basket for comfort.
6. **Adjust Foot Pads:** Adjust the height of the protective foot pads on the base to ensure the chair is stable and level on your chosen surface.



Image: Visual guide illustrating the user-friendly assembly process of the Yaheetech Egg Rattan Chair, from individual components to the fully assembled unit.

USAGE GUIDELINES

The Yaheetech Egg Rattan Chair is designed for comfortable lounging and relaxation. Its versatile design allows for use in various indoor and outdoor environments.

- Use the chair on a flat, stable surface to prevent wobbling or tipping.
- Ideal for reading, relaxing, or enjoying outdoor views.
- Suitable for placement on balconies, decks, gardens, courtyards, or within living rooms and bedrooms.

Outdoor Rattan Chair



Balcony



Deck



Garden



Courtyard



Image: The egg chair positioned in an outdoor garden, demonstrating its suitability for various outdoor living spaces.



Image: A woman comfortably seated in the egg chair inside a room, highlighting its versatility for indoor use.

CARE AND MAINTENANCE

Proper care will extend the life and appearance of your egg rattan chair.

- **Cushion Care:** The polyester cushion covers are detachable and can be removed for independent cleaning. They are resistant to wear and tear and can be machine washed. Allow to air dry completely before reattaching.
- **Rattan and Frame Care:** Wipe the PE rattan and metal frame with a damp cloth and mild soap. Rinse thoroughly and dry completely. Avoid harsh chemicals or abrasive cleaners.
- **Weather Protection:** While the PE rattan is all-weather resistant, it is recommended to bring cushions indoors during prolonged periods of rain or extreme weather to maintain their quality.
- **Storage:** If storing the chair for extended periods, especially during off-season, cover it with a protective furniture cover or store it in a dry, sheltered area.

Cozy Cushions

1 semicircle seat cushion, 2 small cushions and 1 back cushion



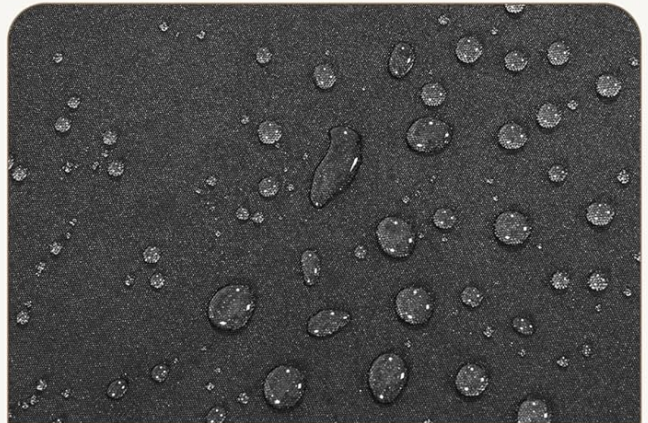
High-density Fillings



3.5" Thick Back Cushion



Zippers for Easy Maintenance



Water-resistant

Image: Detailed view of the cushions, highlighting their high-density fillings, 3.5-inch thickness, zippers for easy maintenance, and water-resistant properties.

Hand-woven PE Rattan

- Elegant and Appealing
- Well-crafted
- Built-to-Last
- Water-resistant



Image: Close-up of the hand-woven PE rattan, emphasizing its elegant, well-crafted, built-to-last, and water-resistant qualities.

TROUBLESHOOTING

If you encounter any issues with your Yaheetech Egg Rattan Chair, refer to the common problems and solutions below.

Problem	Possible Cause	Solution
Chair feels wobbly or unstable.	Uneven ground; loose assembly bolts.	Adjust the foot pads to level the chair. Check and tighten all assembly bolts.
Cushions appear flat or uncomfortable.	Normal compression over time; need for fluffing.	Fluff cushions regularly. Ensure covers are properly fitted after cleaning.
Rattan appears dull or dirty.	Accumulation of dust or outdoor debris.	Clean with a damp cloth and mild soap as per care instructions.

If the problem persists, please contact Yaheetech customer support for further assistance.

SPECIFICATIONS

Key specifications for the Yaheetech Egg Rattan Chair:

Brand: Yaheetech

Model Number: 614519

Color: Light Brown/Black

Product Dimensions: 32.5"D x 37"W x 57.5"H

Maximum Weight Recommendation: 330 Pounds (150 kg)

Item Weight: 39 pounds

Material: PE Rattan, Metal Frame, Polyester Cushions

Indoor/Outdoor Usage: Outdoor (with removable cushions for indoor storage)

Special Features: Arm Rest, Cushion Availability, Adjustable Foot Pads



Image: A visual representation of the chair's dimensions and its maximum weight capacity of 330 lbs.

WARRANTY AND SUPPORT

For warranty information or technical support, please contact Yaheetech customer service directly. Keep your purchase receipt and model number handy for faster service.

You can typically find support contact details on the manufacturer's official website or through your point of purchase.

Online Resources: For additional information, FAQs, and product registration, visit the official Yaheetech website:

[Yaheetech Store on Amazon](#)