

XIAOVV XIAOVV 2K Ultra HD 3MP Security Camera

XIAOVV 2K Ultra HD 3MP Security Camera User Manual

Model: XIAOVV 2K Ultra HD 3MP Security Camera

1. INTRODUCTION

This manual provides detailed instructions for the installation, operation, and maintenance of your XIAOVV 2K Ultra HD 3MP Security Camera. This camera is designed to provide comprehensive surveillance with high-resolution video, advanced detection capabilities, and two-way audio communication. Please read this manual thoroughly before using the product to ensure proper setup and optimal performance.



Figure 1.1: Front view of the XIAOVV 2K Ultra HD 3MP Security Camera.

2. PRODUCT OVERVIEW

2.1 Key Features

- **2K Ultra HD (3MP) Resolution:** Provides crystal-clear video for detailed monitoring.
- **Wide-Angle Lens & Pan/Tilt:** Features a 110° wide-angle lens and 355° rotation capability for extensive coverage.
- **Enhanced Night Vision:** Ensures clear imagery in low-light conditions for 24-hour surveillance.
- **AI Humanoid Detection:** Advanced artificial intelligence reduces false alarms by specifically identifying human shapes.
- **Motion Tracking:** Automatically tracks detected movement within its field of view.
- **Two-Way Audio:** Built-in microphone and speaker allow for real-time communication.
- **Multiple Installation Methods:** Supports upside-down, wall mount, and ceiling mount options.
- **Local & Cloud Storage:** Supports Micro SD card (up to 128GB, not included) and optional cloud storage for recorded video.

2.2 Package Contents

Please verify that all components are present in the package:

- XIAOVV 2K Ultra HD 3MP Security Camera
- Power Adapter
- Mounting Screws and Anchors
- User Manual (this document)

3. SETUP

3.1 Choosing an Installation Location

Select a location that provides the desired viewing angle and is within range of your Wi-Fi network. The camera is designed for indoor use and can be mounted on a wall, ceiling, or placed on a flat surface. Ensure the power outlet is easily accessible.



Figure 3.1: The camera offers a 110° wide-angle view, suitable for various indoor placements.

Suitable for use in multiple scenarios.

Widely used in various commercial settings such as hotels, offices, convenience stores, and warehouses, making it visible everywhere you look.

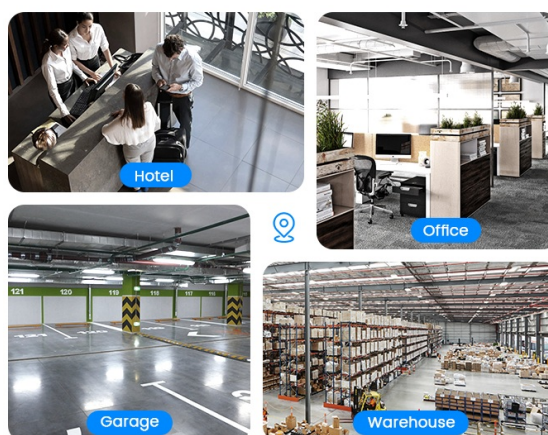


Figure 3.2: The camera is suitable for various indoor scenarios such as offices, hotels, and warehouses.

3.2 Mounting the Camera

1. Wall/Ceiling Mount:

- Mark the desired drilling points using the mounting template (if provided) or the camera base.

- Drill holes and insert wall anchors if mounting on drywall or masonry.
- Secure the camera base to the wall/ceiling using the provided screws.
- Attach the camera body to the secured base.

2. **Tabletop Placement:** Simply place the camera on a stable, flat surface.



Figure 3.3: The camera can be ceiling-mounted for optimal room coverage.

3.3 Powering On

Connect the power adapter to the camera's power input port and then plug it into a standard electrical outlet. The camera will power on and initiate its startup sequence.

3.4 App Installation and Pairing

1. Download the "XIAOVV APP" from your mobile device's app store (iOS App Store or Google Play Store).
2. Open the app and create a new account or log in if you already have one.
3. Follow the in-app instructions to add your new camera. This typically involves scanning a QR code on the camera or connecting to the camera's temporary Wi-Fi hotspot.
4. Connect the camera to your home Wi-Fi network when prompted by the app.
5. Once successfully paired, you will be able to view the live feed and access camera settings.

4. OPERATING INSTRUCTIONS

4.1 Live View and Pan/Tilt Control

After pairing, open the XIAOVV APP to access the live video feed from your camera. Use the on-screen controls to pan (horizontal rotation up to 355°) and tilt (vertical adjustment) the camera lens to adjust the viewing area.



Figure 4.1: The camera supports 355° horizontal rotation for comprehensive coverage.

4.2 Two-Way Audio

The camera features a built-in microphone and speaker for two-way audio communication. In the live view interface of the app, tap the microphone icon to speak through the camera and the speaker icon to listen to audio from the camera's location. This feature can be used to communicate with family members or deter unwanted visitors.

Two-way Audio

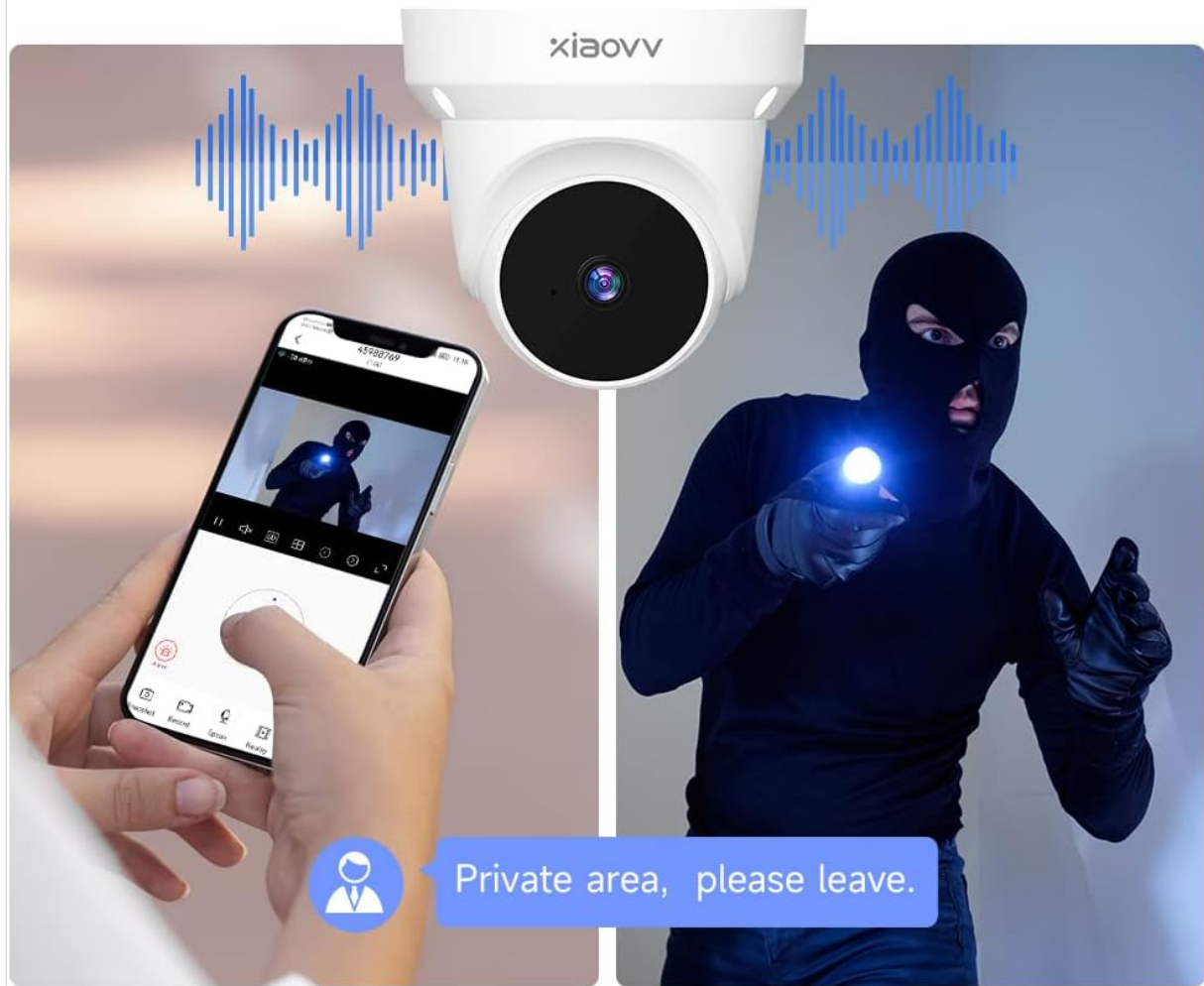


Figure 4.2: Two-way audio allows for real-time communication through the camera.



Figure 4.3: Use two-way audio to communicate with visitors or delivery personnel.

4.3 Motion Detection and AI Humanoid Detection




The camera is equipped with motion detection and advanced AI humanoid detection. When motion or a human shape is detected, the camera will record video and send an alarm message to your mobile app. You can adjust the sensitivity and detection zones within the app settings.




Figure 4.4: AI Human Detection helps reduce false alarms by focusing on human shapes.

PIR/AI Motion Detection & Real Time Alarm Notification

Advanced Technology to monitor activity in real time, support siren to drive away stranger



The image shows a woman and a child standing in front of a light blue door. A notification overlay is present in the top left corner of the image, reading "XVV Ostium NOW Motion detection alarm Motion detection alarm". The notification has a blue border and a white background. The woman is wearing an orange sweater and blue jeans, and the child is wearing a white sweater and a pink backpack. The door is light blue and has a silver handle. There is a small potted plant to the left of the door. The background shows a green lawn and some trees.

Figure 4.5: Real-time alarm notifications are sent to your mobile device upon detection.

4.4 Night Vision

The camera automatically switches to night vision mode in low-light conditions, providing clear black and white or full-color (if supported by specific model features) video footage even in complete darkness. This ensures continuous surveillance around the clock.



Figure 4.6: The camera provides clear night vision for 24/7 monitoring.

4.5 Smart Playback

Access recorded footage through the app's playback feature. The smart playback function allows you to filter motion recordings and quickly find specific events or timeframes.

Smart Playback

With smart playback, filter all motion recordings and find the clip you want to see as quickly and easily as possible.

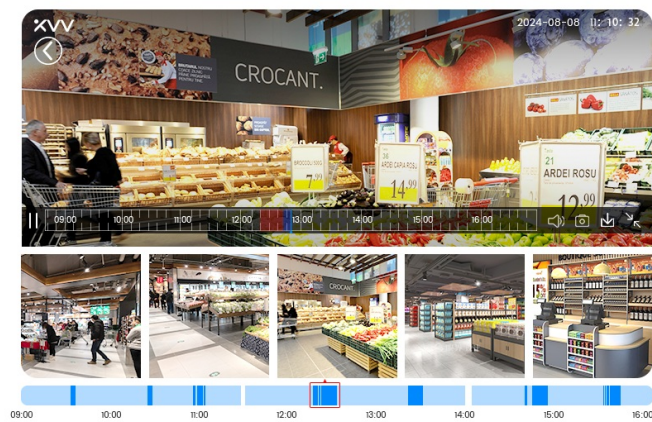


Figure 4.7: Smart Playback allows for easy review of recorded events.

4.6 Multi-User Sharing

You can share live streaming access and alerts with family members or trusted individuals through the XIAOVV APP. This allows multiple users to monitor the camera feed and receive notifications simultaneously.

Multi User Sharing

You can share live streaming with your family members, get the alerts and talk with your family/visitor in real-time even if you are in another country.



Figure 4.8: Share camera access with multiple family members.

5. MAINTENANCE

5.1 Cleaning the Camera

To maintain optimal image quality, regularly clean the camera lens with a soft, dry, lint-free cloth. Do not use harsh chemicals or abrasive cleaners.

5.2 Storage Options

The camera supports two primary storage methods for recorded video:

- **Micro SD Card:** Insert a Micro SD card (up to 128GB, not included) into the camera's designated slot for local storage. The camera supports 24-hour video recording with automatic cycle coverage.
- **Cloud Storage:** Optional cloud storage is available for alarm videos, providing an additional layer of data security and accessibility. Refer to the XIAOVV APP for details on cloud storage plans.



Figure 5.1: The camera features a built-in Micro SD card slot for local storage.

Support micro-sd card

(maximum support of 128G SD card is not included in the product) local storage, loop recording

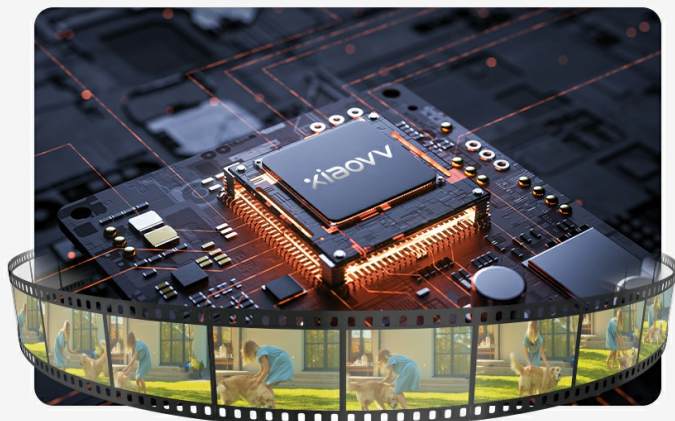


Figure 5.2: Both Micro SD card and cloud storage options are available for video recordings.

6. TROUBLESHOOTING

6.1 Common Issues and Solutions

Problem	Possible Cause	Solution
Camera offline in app	No power; Wi-Fi disconnected; Router issue	Check power connection; Verify Wi-Fi signal strength; Restart router and camera.
No motion detection alerts	Detection sensitivity too low; Detection zone not set; App notifications disabled	Adjust sensitivity in app; Configure detection zones; Enable app notifications.
Poor image quality	Dirty lens; Insufficient lighting; Network bandwidth issues	Clean the lens; Ensure adequate lighting or check night vision settings; Check network speed.
SD card not recording	SD card full or corrupted; Incorrect formatting; SD card not inserted properly	Format SD card via app; Replace SD card if corrupted; Reinsert SD card.

If you encounter issues not listed here, please refer to the in-app help section or contact customer support.

7. SPECIFICATIONS

Feature	Detail
Model	XIAOVV 2K Ultra HD 3MP Security Camera
Video Capture Resolution	2K, 3 MP
Connectivity Protocol	Wi-Fi
Wireless Communication Technology	Wi-Fi
Power Source	Corded Electric
Compatible Devices	XIAOVV APP
Mounting Type	Wall Mount, Ceiling Mount, Tabletop
Indoor/Outdoor Usage	Indoor
Storage	Micro SD card (up to 128GB), Cloud Storage
Alert Type	Motion Only (with AI Humanoid Detection)
Item Weight	1 pounds (approx.)

Feature	Detail
Package Dimensions	6 x 5 x 4.5 inches (approx.)

8. WARRANTY AND SUPPORT

8.1 Warranty Information

Please refer to the product packaging or the official XIAOVV website for specific warranty terms and conditions. Typically, products come with a limited warranty covering manufacturing defects.

8.2 Customer Support

For technical assistance, troubleshooting, or warranty claims, please contact XIAOVV customer support through the following channels:

- **XIAOVV APP:** Access the "Help" or "Support" section within the application.
- **Manufacturer Website:** Visit the official XIAOVV website for contact information and FAQs.

Please have your product model and purchase information ready when contacting support.