

Hikvision AE-DC4015-F5

Hikvision F5 Perfume DashCam User Manual

Model: AE-DC4015-F5

1. INTRODUCTION

Welcome to the user manual for your Hikvision F5 Perfume DashCam. This document provides essential information for the proper installation, operation, and maintenance of your device. Please read this manual thoroughly before using the dash camera to ensure optimal performance and safety.

2. PRODUCT OVERVIEW

2.1 Key Features

- 2K (1440p) resolution for clear video recording.
- Integrated perfume cube functionality.
- Hik-DashCam APP connectivity via Wi-Fi for remote control and viewing.
- G-Sensor for automatic incident detection and recording.
- Automatic recording upon vehicle startup.
- F1.8 Super Aperture for enhanced low-light performance.
- 123° Field of View (FOV).

2.2 Package Contents

- Hikvision F5 Perfume DashCam Unit
- Mounting Bracket
- Power Cable (Car Charger)
- Perfume Cube (pre-installed or separate)
- User Manual

2.3 Device Layout

The image below illustrates the main components of the Hikvision F5 Perfume DashCam.



Image Description: A white Hikvision F5 Perfume DashCam with a rose gold accent is shown next to a smartphone displaying the Hik-DashCam app interface. The app shows options for 'Photos' and 'Playback'. A separate black mounting bracket is also visible above the dashcam. The dashcam itself has a lens on the front and a 2560x1440P resolution label.

3. SETUP

3.1 Installation

1. **Choose Location:** Select a suitable location on your car's windshield, typically behind the rearview mirror, to ensure an unobstructed view of the road and minimal driver distraction.
2. **Clean Surface:** Clean the chosen area on the windshield thoroughly to ensure proper adhesion of the mounting bracket.
3. **Attach Bracket:** Secure the mounting bracket to the windshield. Ensure it is firmly attached.
4. **Mount DashCam:** Attach the Hikvision F5 DashCam to the mounting bracket. Adjust the camera angle to capture the desired view.

3.2 Power Connection

Connect the provided power cable to the dash camera and plug the other end into your vehicle's 12V power outlet (cigarette lighter socket). Route the cable neatly to avoid interference with driving controls.

3.3 Memory Card Installation

Insert a compatible MicroSD card (Class 10 or higher, up to 256GB) into the designated slot on the dash camera. Ensure the card is inserted correctly until it clicks into place. The device will prompt you to format the card upon first use or if a new card is detected.

3.4 App Connection: Hik-DashCam

To access advanced features, live view, and playback, connect your dash camera to the Hik-DashCam app on your smartphone.



Image Description: A Hikvision F5 Perfume DashCam is shown next to a smartphone displaying the Hik-DashCam app. The app shows a live view of a road and options for 'Photos' and 'Playback'. The phone's status bar indicates a Wi-Fi connection to 'HIKVISION-F5'.

1. **Download App:** Download the Hik-DashCam app from your smartphone's app store or by scanning the QR code provided in the product packaging. You can also visit <http://hikvisionauto.com/web/insideAppDownload.jsp>.
2. **Power On DashCam:** Ensure the dash camera is powered on.
3. **Connect via Wi-Fi:** On your smartphone, go to Wi-Fi settings and connect to the dash camera's Wi-Fi network (e.g., "HIKVISION-F5"). The default password can usually be found in the camera settings or product documentation.

4. **Open App:** Launch the Hik-DashCam app. The app should automatically detect and connect to your dash camera.
5. **Format SD Card:** If prompted, format the MicroSD card through the app settings to ensure compatibility and optimal performance.

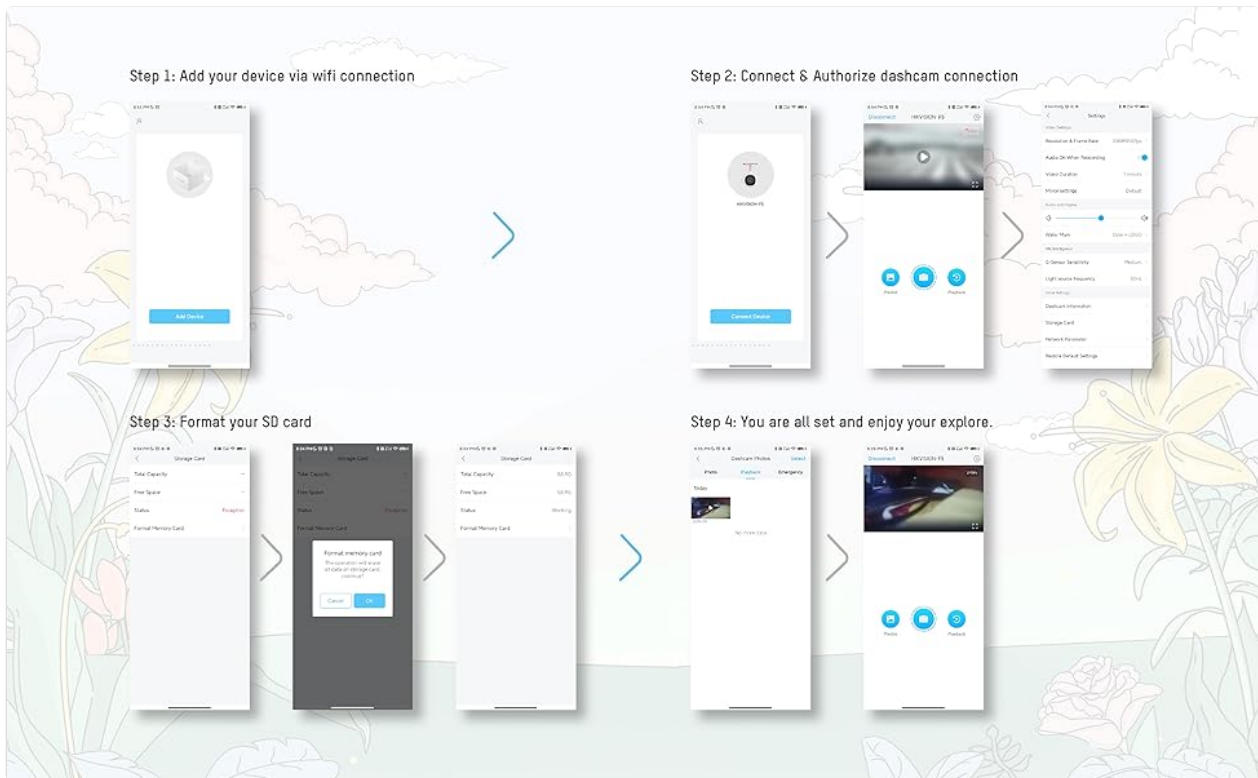


Image Description: A four-panel graphic illustrating the setup process for the Hik-DashCam app. Step 1 shows 'Add your device via wifi connection'. Step 2 shows 'Connect & Authorize dashcam connection'. Step 3 shows 'Format your SD card' with a pop-up confirmation. Step 4 shows 'You are all set and enjoy your explore' with the app's main interface.

4. OPERATING INSTRUCTIONS

4.1 Automatic Recording

The dash camera automatically begins recording when your vehicle's ignition is turned on and stops when the ignition is turned off. This ensures that all your drives are captured without manual intervention.

4.2 Loop Recording

The F5 DashCam utilizes loop recording. When the memory card is full, the camera automatically overwrites the oldest unlocked video files to make space for new recordings. This ensures continuous recording without the need for manual memory card management.



Image Description: A circular diagram illustrating the loop recording process. It shows 'Recording' leading to 'Card Full', which then leads to 'Overwrite Oldest Files', and finally 'Keep Recording' which loops back to 'Recording'.

4.3 G-Sensor Function

The built-in G-Sensor detects sudden impacts or collisions. In the event of an accident, the current video segment is automatically locked and saved to a protected folder, preventing it from being overwritten by loop recording. This ensures critical evidence is preserved.

4.4 Parking Monitoring

With parking monitoring enabled, the dash camera can continue to monitor your vehicle for impacts even when parked. If an impact is detected, the camera will automatically record a short video clip. This feature provides 24-hour surveillance for your parked vehicle.

APP Connection: Hik-DashCam

In app access and real-time instant sharing
via Wi Fi without data cost



LIVE VIEW

Preview, playback
and editing parameters

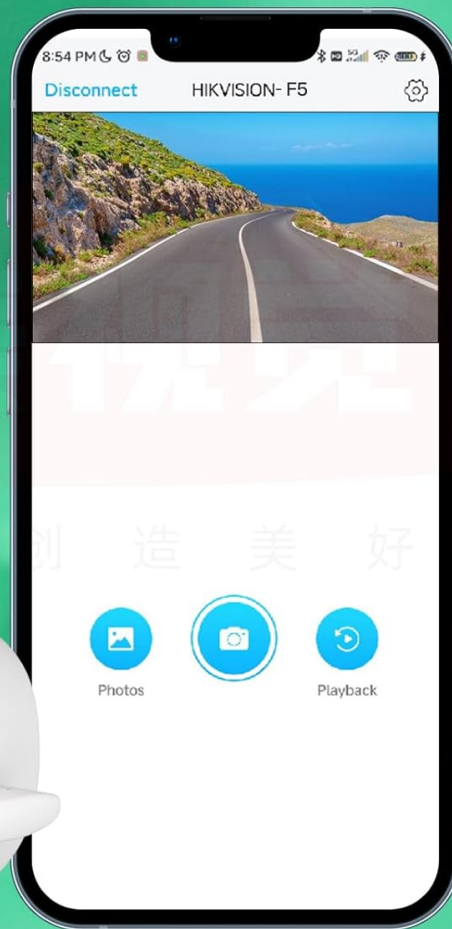


Image Description: A Hikvision F5 Perfume DashCam is depicted above a green SUV parked outdoors, with a circular graphic indicating '24 HOURS' and radiating waves, symbolizing continuous parking monitoring.

4.5 Using the Hik-DashCam App

The Hik-DashCam app provides comprehensive control over your dash camera:

- **Live View:** Stream real-time video from the dash camera to your smartphone.
- **Playback:** Review recorded videos and photos directly on your phone.
- **Settings:** Adjust camera settings such as resolution, G-Sensor sensitivity, loop recording duration, and Wi-Fi password.
- **Download/Share:** Download important video clips or photos to your phone and share them as needed.

5. MAINTENANCE

5.1 Cleaning the Device

To maintain optimal video quality, regularly clean the camera lens with a soft, lint-free cloth. For the device body, use a dry or slightly damp cloth. Avoid using harsh chemicals or abrasive materials that could damage the camera.

5.2 Perfume Cube Replacement

The Hikvision F5 DashCam is designed to work with a perfume cube. When the fragrance diminishes, replace the cube by gently opening the designated compartment on the device and inserting a new compatible perfume cube. Refer to the product packaging for specific instructions on accessing the perfume cube compartment.

6. TROUBLESHOOTING

If you encounter issues with your Hikvision F5 Perfume DashCam, please refer to the table below for common problems and their solutions.

Problem	Possible Cause	Solution
Camera not powering on	No power supply; Faulty cable; Vehicle power outlet issue.	Check power cable connection; Try a different power outlet; Ensure vehicle ignition is on.
Recording stops unexpectedly	Memory card full; Memory card error; Power interruption.	Format the memory card; Replace the memory card; Check power connection stability.
Poor video quality	Dirty lens; Incorrect resolution settings; Low light conditions.	Clean the camera lens; Adjust resolution settings in the app; Ensure sufficient lighting.
Cannot connect to App via Wi-Fi	Incorrect Wi-Fi password; DashCam Wi-Fi not active; App issue.	Verify Wi-Fi password; Restart dash camera and phone; Reinstall the app.
G-Sensor not working	G-Sensor sensitivity too low; Feature disabled.	Adjust G-Sensor sensitivity in the app settings; Ensure the feature is enabled.







7. SPECIFICATIONS

Feature	Detail
Model Number	AE-DC4015-F5
Video Capture Resolution	1440p (2K)
Connectivity Technology	Wi-Fi
Special Features	App Control, G-Sensor, Auto-recording, Perfume Cube Functionality
Aperture	F1.8
Field of View (FOV)	123°
Mounting Type	Ceiling Mount (Adhesive)
Control Method	App
Product Dimensions	7.2 x 6.1 x 8.1 cm
Item Weight	0.23 Kilograms (230 g)
Manufacturer	Hikvision

8. WARRANTY AND SUPPORT

Hikvision products are designed for reliability and performance. For warranty information, please refer to the warranty card included with your product or visit the official Hikvision website. For technical support or further assistance, please contact Hikvision customer service through their official channels.

Related Documents - AE-DC4015-F5

	<p>Hikvision Dashcam F6 AE-DC5013-F6 User Manual and Installation Guide</p> <p>Comprehensive user manual for the Hikvision Dashcam F6 (Model AE-DC5013-F6), covering packing list, installation, mobile connection, function description, troubleshooting, safety, and regulatory information.</p>
	<p>Hikvision G40 Economical Dashcam Quick Start Guide</p> <p>This guide provides essential information for setting up and using the Hikvision G40 Economical Dashcam. It covers package contents, product features, installation steps, and frequently asked questions for vehicle video and audio monitoring.</p>
	<p>Hikvision Dashcam D1 User Manual</p> <p>User manual for the Hikvision Dashcam D1, covering packing list, parts introduction, installation, mobile phone connection, basic description, specifications, cautions, troubleshooting, and regulatory information.</p>
	<p>HikDashcam C8 Pro User Manual - Installation, Features, and Troubleshooting</p> <p>Comprehensive user manual for the HikDashcam C8 Pro, covering installation, basic operation, mobile connection, specifications, and troubleshooting for this advanced automotive dashcam.</p>
	<p>Hikvision HikDashcam G2 Pro User Manual and Specifications</p> <p>Comprehensive user manual for the Hikvision HikDashcam G2 Pro (AE-DC8322-G2PRO), covering installation, operation, features, specifications, and troubleshooting.</p>
	<p>Hikvision Dashcam K2 AE-DC2018-K2 User Manual</p> <p>Official user manual for the Hikvision Dashcam K2 (Model AE-DC2018-K2), providing detailed instructions on installation, setup, operation, features, safety precautions, and troubleshooting for this vehicle dash camera.</p>