

- › [maXpeedingrods](#) /
- › [maXpeedingrods 48V 500A Golf Cart Speed Controller User Manual \(Models 1205M-5601, 1205M-5603, P125M-5603\)](#)

maXpeedingrods 1205M-5601, 1205M-5603, P125M-5603

maXpeedingrods 48V 500A Golf Cart Speed Controller User Manual

Models: 1205M-5601, 1205M-5603, P125M-5603

1. OVERVIEW

This manual provides essential information for the proper installation, operation, and maintenance of your maXpeedingrods 48V 500A Golf Cart Speed Controller. This controller is designed for use with golf carts requiring 48V and 500A, and is compatible with models such as Curtis 1205M-5601, 1205M-5603, and P125M-5603.

The controller utilizes advanced pulse width modulation (PWM) technology to ensure efficient electricity usage, minimizing energy consumption and optimizing torque conversion. Its robust operating system facilitates simultaneous control of vehicle functions, motor performance, and user-defined programs.



Figure 1: maXpeedingrods 48V 500A Golf Cart Speed Controller.

2. SAFETY INFORMATION

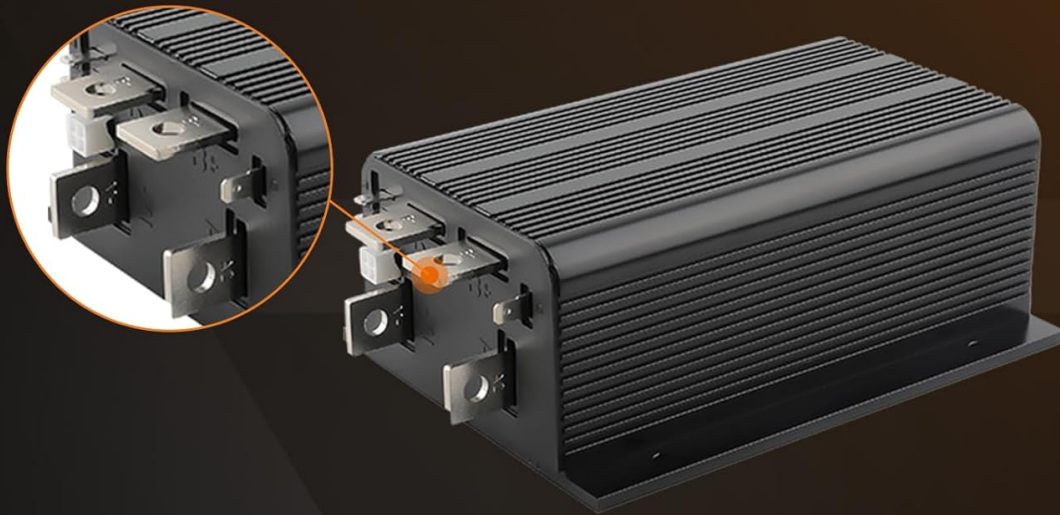
Always prioritize safety when working with electrical components. Failure to follow safety guidelines can result in serious injury or damage to the product and vehicle.

- Disconnect all power sources from the golf cart before attempting any installation or maintenance.
- Wear appropriate personal protective equipment (PPE), including safety glasses and insulated gloves.
- Ensure the installation area is dry and well-ventilated.
- Avoid touching electrical terminals with bare hands when power is connected.
- Consult a qualified technician if you are unsure about any installation or troubleshooting steps.

3. SPECIFICATIONS

The following table details the technical specifications of the maXpeedingrods 48V 500A Golf Cart Speed Controller:

Specification	Value
Voltage	48V
Current Rating	500A
Throttle Type	0-5kΩ
Item Weight	5.48 pounds
Product Dimensions	10.24 x 7.09 x 4.72 inches
Manufacturer Part Number	NJ29BL



Voltage	36V - 48V
Current Rating	500A
Throttle type	0-5k Ω
Number of Plug Bars	4 Big plug bars

MAX SPEEDING RODS
Since 2006



Figure 2: Visual representation of key specifications.

Product Size

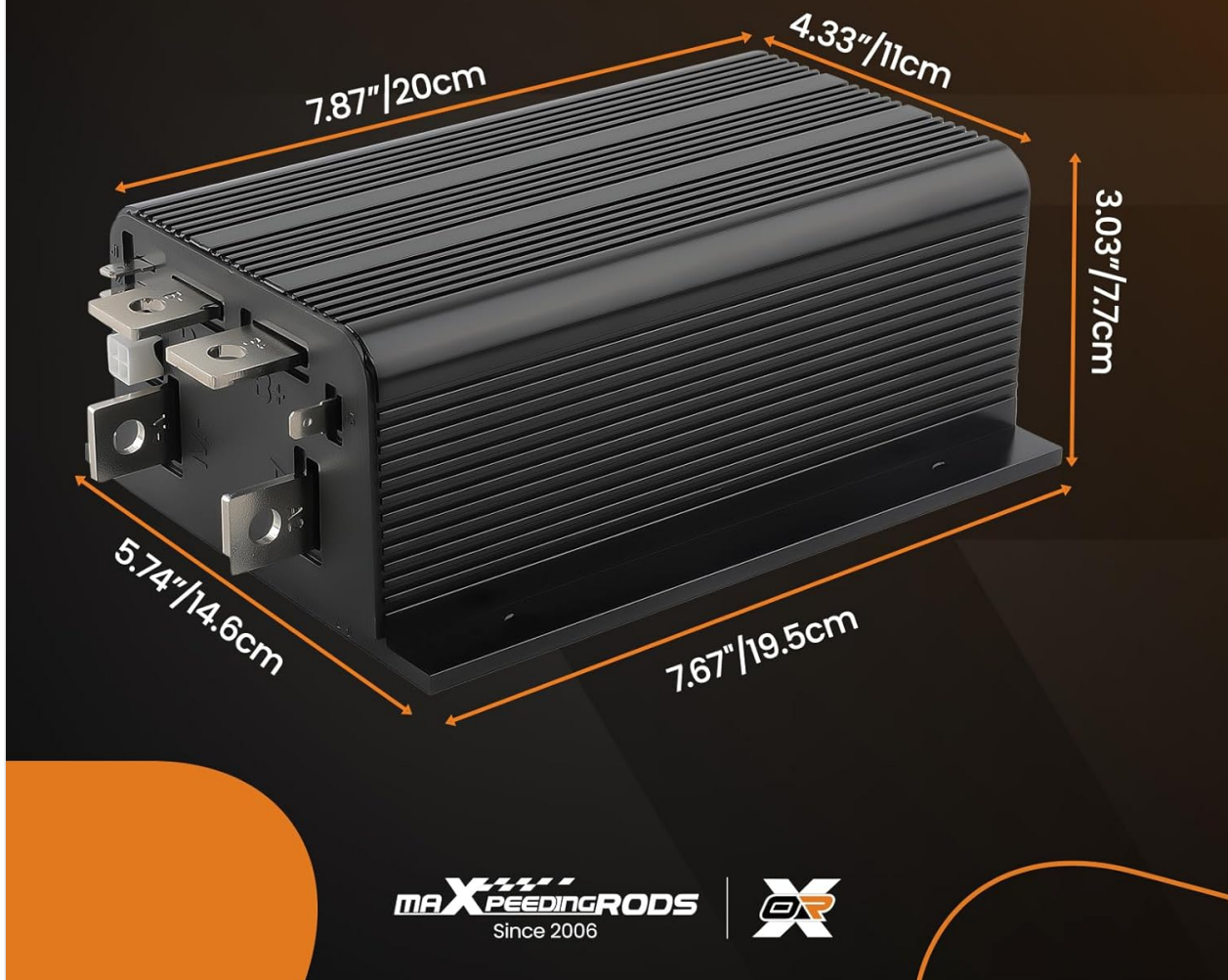


Figure 3: Product dimensions for installation planning.

4. SETUP AND INSTALLATION

The maXpeedingrods 48V 500A Speed Controller is designed for direct replacement and ease of installation. However, professional installation is recommended to ensure correct wiring and optimal performance.

4.1 Compatibility

This controller is compatible with various golf cart systems, including those that use Curtis 1205M-5601, 1205M-5603, and P125M-5603 controllers. Verify your golf cart's existing controller model before proceeding with installation.

Replace Part Number



Fit for Curtis 1205M-5601
1205M-5603 P125M-5603



MAX SPEEDING RODS
Since 2006



Figure 4: Controller compatibility with golf cart models.

4.2 Connection Points

The controller features clearly labeled connection points for power input, motor output, and throttle signals. Refer to the detailed images below for identification of terminals.

Product Details

The product is a black, rectangular D.C. Motor Controller with a heat sink design. It features a rear panel with terminal blocks for power, ground, and signal. The top surface has several mounting holes. The front panel has a terminal block with labels for V+, GND, and signal lines. A label on the side provides technical specifications and a barcode.

MAXPEEDINGRODS
Since 2006

MAX

Figure 5: Detailed views of the controller's terminals and connectors.



Figure 6: Main power and motor terminals.



Figure 7: Additional terminal views.

4.3 Installation Steps (General)

1. **Preparation:** Ensure the golf cart is turned off and the battery pack is disconnected.
2. **Removal:** Carefully remove the old speed controller, noting all existing connections. Take photos for reference if necessary.
3. **Mounting:** Mount the new maXpeedingrods controller securely in the designated location.
4. **Wiring:** Connect the power, motor, and throttle wires to the corresponding terminals on the new controller. Double-check all connections for tightness and correct polarity.
5. **Reconnection:** Reconnect the battery pack and power on the golf cart.
6. **Testing:** Perform initial functional tests at low speed in a safe, open area.

4.4 Installation Videos

The following videos provide visual guidance on the product and its installation process:

Video: 500A 48V DC Motor Controller 1205M-5601

Your browser does not support the video tag.

This video demonstrates the 500A 48V DC Motor Controller, model 1205M-5601, showcasing its physical attributes and potential applications.

Video: 48V 500A 1205M-5603 Golf Cart Controller for Club Car DS

Your browser does not support the video tag.

A video presentation of the 48V 500A Golf Cart Controller, model 1205M-5603, specifically for Club Car DS models, highlighting its features and fitment.

Video: 500A 48V 0-5K Controller Replace Curtis 1205 Controller

Your browser does not support the video tag.

This video illustrates the 500A 48V 0-5K controller as a replacement for Curtis 1205 series controllers, demonstrating its form and function.

5. OPERATION

Once correctly installed, the maXpeedingrods speed controller will manage the power delivery to your golf cart's motor based on throttle input. The advanced PWM technology ensures smooth acceleration and efficient power utilization, contributing to reduced energy loss and optimized torque.

The controller's powerful operating system is designed to seamlessly integrate vehicle control, motor management, and any user-side programming, providing a responsive and consistent driving experience.

6. MAINTENANCE

Regular inspection and proper maintenance can extend the lifespan and ensure the reliable operation of your speed controller.

- **Visual Inspection:** Periodically check the controller for any signs of physical damage, corrosion, or loose connections.
- **Cleanliness:** Keep the controller free from dirt, dust, and moisture. Use a dry, soft cloth for cleaning. Do not use harsh chemicals or solvents.
- **Ventilation:** Ensure that the area around the controller allows for adequate airflow to prevent overheating.
- **Wiring:** Verify that all wiring connections remain secure and free from fraying or damage.

7. TROUBLESHOOTING

If you encounter issues with your golf cart's speed control after installing the maXpeedingrods controller, consider the following general troubleshooting steps:

- **No Power:** Check battery connections and ensure the main power switch is on. Verify battery voltage.
- **No Movement/Erratic Movement:** Inspect all wiring connections to the controller and motor. Ensure the throttle mechanism is functioning correctly.
- **Overheating:** Check for proper ventilation around the controller. Ensure the motor is not overloaded.
- **Diagnostic Tools:** If available, use a compatible diagnostic tool to read error codes from the controller.

For complex issues or if the problem persists, it is highly recommended to consult a qualified golf cart technician or contact maXpeedingrods customer support.

8. WARRANTY AND SUPPORT

maXpeedingrods stands behind the quality of its products. This speed controller is covered by a **1-year warranty** from the date of purchase, protecting against manufacturing defects in materials and workmanship. For any technical assistance, installation queries, or warranty claims, maXpeedingrods provides unlimited technical support and customer service. Please refer to the contact information provided with your product.

packaging or visit the official maXpeedingrods website for support details.

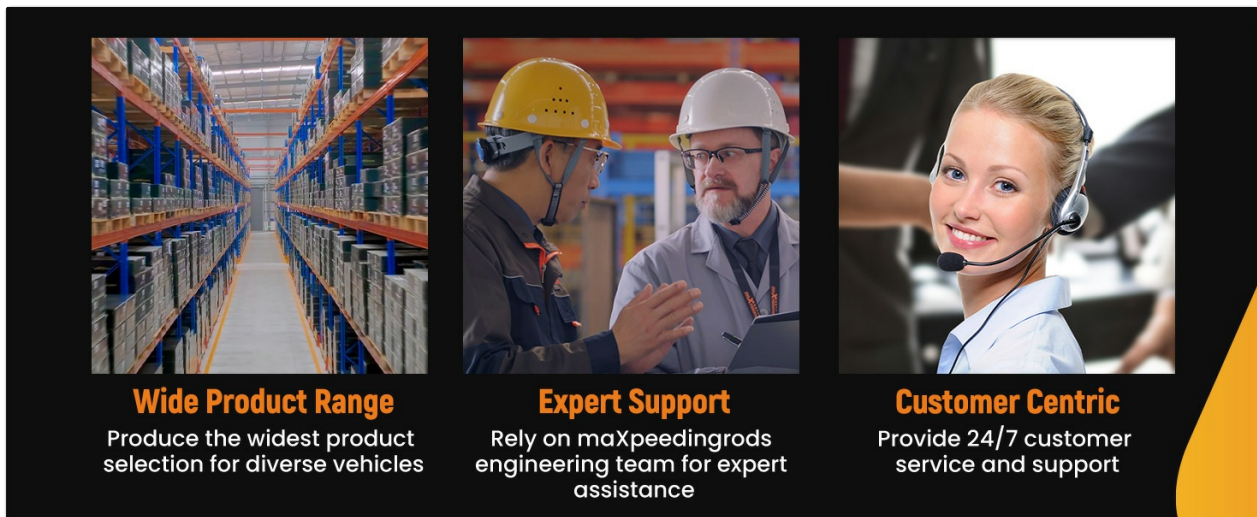


Figure 8: maXpeedingrods offers expert support and customer service.

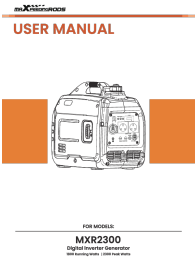
Related Documents - 1205M-5601, 1205M-5603, P125M-5603

	<p>maXpeedingrods Trash Can Transporter Hitch Instructions & Installation Guide</p> <p>Detailed installation instructions and product information for the maXpeedingrods Trash Can Transporter Hitch (model THR-2IN5IN-LC). Learn how to easily attach and use this hitch for trucks, cars, ATVs, and more.</p>
	<p>Maxpeedingrods Q92 Audio/Video Receiver User Manual - Installation, Features, and Troubleshooting</p> <p>Comprehensive user manual for the Maxpeedingrods Q92 Audio/Video Receiver. Learn about installation, product operation, settings, troubleshooting, and specifications for your car stereo.</p>
	<p>MAXPEEDINGRODS MXR1500 Digital Inverter Generator User Manual</p> <p>User manual for the MAXPEEDINGRODS MXR1500 Digital Inverter Generator, providing specifications, safety guidelines, operation instructions, maintenance procedures, and troubleshooting tips for this 1000 running watts / 1200 peak watts portable generator.</p>
	<p>MAXPEEDINGRODS MXR2350 Inverter Generator Owner's Manual</p> <p>Comprehensive owner's manual for the MAXPEEDINGRODS MXR2350 Inverter Generator, covering safety, operation, maintenance, troubleshooting, and specifications. Learn how to safely operate and maintain your generator.</p>



[MAXpeedingRODS Dual Steering Stabilizer Installation Guide for Jeep XJ, MJ, TJ](#)

Comprehensive installation instructions for the MAXpeedingRODS Dual Steering Stabilizer kit, designed for Jeep Cherokee XJ, Comanche MJ, and Wrangler TJ models. Includes fitment, kit contents, step-by-step assembly, and maintenance tips.



[MAXPEEDINGRODS MXR2300 Digital Inverter Generator User Manual](#)

Comprehensive user manual for the MAXPEEDINGRODS MXR2300 Digital Inverter Generator, covering technical specifications, safety guidelines, operation, maintenance, and troubleshooting.