



Manuals.plus /

› fishkeeper /

› fishkeeper 4W-2600mAh Battery Powered Aquarium Air Pump Instruction Manual

fishkeeper SUS-FK061-4W (4W-2600mAh)

fishkeeper 4W-2600mAh Battery Powered Aquarium Air Pump Instruction Manual

Model: SUS-FK061-4W

1. INTRODUCTION

Thank you for choosing the fishkeeper Battery Powered Aquarium Air Pump. This device is designed to provide essential aeration for your aquarium, especially during power outages, or for use in outdoor fishing and transportation. It features a USB rechargeable battery, adjustable airflow, and multi-level noise reduction for a quiet and efficient operation. Please read this manual thoroughly before use to ensure proper setup and optimal performance.



Image 1.1: fishkeeper Battery Powered Aquarium Air Pump in use.

2. PACKAGE CONTENTS

Verify that all items are present in the package:

- 1x fishkeeper Aquarium Air Pump
- 1x USB Charging Cable
- 2x Air Stones
- 2x Air Tubes
- 2x Transparent Suction Cups
- 1x User Manual

PACKAGE INCLUDES



Battery Capacity: **6000mAh**

Power: **6W**

Flow: **110GPH**

Pressure: **0.025Mpa**

Noise: **<35dB**

Size: **6.1*3.35*2.04 inch**

Image 2.1: Contents included in the package.

3. PRODUCT FEATURES

- **Superior Performance:** Maximum airflow rate of 80 GPH, pressure of 0.02 Mpa, and power of 4W. IP64 waterproof rating. Suitable for 5-125 gallon aquariums.
- **AC/DC Automatic Switching:** Functions as a regular air pump when connected to AC power and automatically switches to DC power from the built-in lithium battery during power outages.
- **Multi-Level Noise Reduction:** Incorporates magnetic levitation silent technology, a high-precision copper motor, ABS shell material for sound insulation, and anti-slip damping foot pads to minimize operating noise (below 35 dB).
- **Large Capacity Lithium Battery:** Equipped with a 2600mAh battery, offering 16-30 hours in continuous mode and 31-58 hours in intermittent mode. USB charging cable included.
- **Adjustable Flow:** Four adjustable flow levels controlled by an intelligent button to meet specific air volume requirements.
- **Versatile Applications:** Ideal for aquariums, outdoor fishing, and emergency situations.

4. SETUP INSTRUCTIONS

4.1 Component Identification



Image 4.1: Overview of the air pump components and controls.

4.2 Connecting Air Tubes and Air Stones

1. Cut the air tube to the desired length.
2. Connect one end of the air tube to an air outlet on the pump.
3. Connect the other end of the air tube to an air stone.
4. Place the air stones in your aquarium.

4.3 Installing Check Valves (Recommended)

If the air pump is placed below the water level of your aquarium, it is crucial to install check valves to prevent water from siphoning back into the pump during a power outage, which can cause damage. The package includes two check valves.

1. Cut the air tube from the middle or any suitable position between the pump and the air stone.
2. Insert the check valve into the cut section of the air tube. Ensure the arrow on the check valve points towards the air stone (away from the pump), indicating the direction of airflow.
3. Connect the air tubes to the air pump and check valve respectively.
4. Connect the other end of the air tube to the air stone.

INSTALLATION STEPS WITH CHECK VALVE

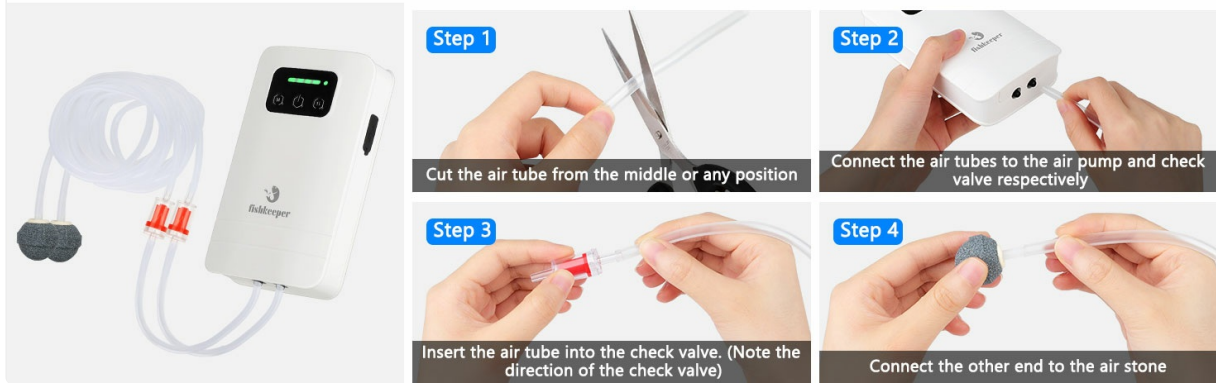


Image 4.2: Step-by-step guide for check valve installation.

4.4 Charging the Air Pump

The air pump is equipped with a rechargeable lithium battery. Before first use, fully charge the pump. Use the provided USB charging cable to connect the pump to a USB power source such as a USB charger, power bank, car USB charger, or computer USB port.

RECHARGEABLE LITHIUM BATTERY

Multiple USB Charging Methods

2600mAh



Image 4.3: Multiple USB charging methods for the air pump.

5. OPERATING INSTRUCTIONS

5.1 Power ON/OFF

Press the ON/OFF switch (refer to Image 4.1) to turn the pump on or off.

5.2 Working Modes and Airflow Adjustment

The pump offers two working modes and four adjustable airflow levels:

- **Continuous Mode:** Provides constant airflow. Press the 'M' button (Working Mode Indication Key) to select this mode.
- **Intermittent Mode:** Provides airflow in intervals, conserving battery life. Press the 'M' button to cycle to this mode. A blinking light indicates intermittent mode, while a constant light indicates normal (continuous) mode.

To adjust the airflow level, press the 'Flow Adjustable Button' (up/down arrows). There are four levels, typically indicated by a flashing light on the battery indicator. A constant light on the indicator shows the power level.



Image 5.1: Adjustable flow design with four levels.

5.3 Battery Indicator

The indicator lights on the pump serve a dual purpose:

- When adjusting airflow, a flashing indication shows the air flow rate level.
- When not adjusting airflow, a constant light indicates the current battery power level.

5.4 Runtime

The 4W-2600mAh model offers the following approximate runtimes on a full charge:

- Maximum Continuous Mode: 16 hours
- Minimum Continuous Mode: 30 hours
- Maximum Intermittent Mode: 31 hours
- Minimum Intermittent Mode: 58 hours



Image 5.2: Approximate runtimes for various operating modes.

6. MAINTENANCE

6.1 Cleaning Air Stones

Over time, air stones can become clogged with algae or debris, reducing airflow. Clean them regularly by soaking them in a diluted bleach solution (e.g., 1 part bleach to 9 parts water) for a few hours, then rinse thoroughly and soak in dechlorinated water before reintroducing to the tank.

6.2 Checking Air Tubes

Inspect air tubes periodically for kinks, cracks, or blockages. Replace damaged tubes to ensure optimal airflow.

6.3 Battery Care

To prolong battery life, avoid fully discharging the pump frequently. Recharge the pump when the battery indicator shows low power. If storing the pump for an extended period, charge it to approximately 50% and recharge every 3-6 months.

7. TROUBLESHOOTING

Problem	Possible Cause	Solution
No air output	Pump is off; Battery is depleted; Air tube kinked/blocked; Air stone clogged; Check valve installed incorrectly.	Turn on pump; Recharge battery; Straighten/replace air tube; Clean/replace air stone; Verify check valve direction.
Low air output	Airflow setting too low; Air stone partially clogged; Air tube partially blocked; Low battery.	Increase airflow setting; Clean air stone; Check air tube for partial blockages; Recharge battery.
Excessive noise	Pump not on a stable surface; Vibrations; Internal issue.	Ensure pump is on a flat, stable surface; Check rubber feet for damage; Contact support if noise persists.
Pump does not charge	USB cable faulty; Power source faulty; Charging port damaged.	Try a different USB cable; Try a different USB power source; Contact support.

8. SPECIFICATIONS

Feature	Specification
Brand	fishkeeper
Model Number	SUS-FK061-4W
Power	4W
Maximum Airflow Rate	80 GPH (Gallons Per Hour)
Maximum Pressure	0.02 Mpa (0.29 PSI)
Battery Capacity	2600mAh Lithium Ion
Continuous Mode Runtime	16-30 hours
Intermittent Mode Runtime	31-58 hours
Waterproof Rating	IP64
Noise Level	< 35 dB
Material	Acrylonitrile Butadiene Styrene (ABS)
Product Dimensions (LxWxH)	6.18" x 3.94" x 3.35"
Item Weight	1.08 pounds (0.49 kg)

9. WARRANTY AND SUPPORT

fishkeeper products are manufactured with quality and reliability in mind. For any questions, concerns, or technical support regarding your air pump, please refer to the contact information provided with your purchase or visit the official fishkeeper website. Please retain your proof of purchase for warranty claims.