



Manuals.plus /

› BTHFST /

› BTHFST DT005 TV Stand Instruction Manual

## BTHFST DT005

# BTHFST DT005 TV Stand Instruction Manual

Model: DT005 | Brand: BTHFST

### PRODUCT OVERVIEW

The BTHFST DT005 TV Stand is a versatile entertainment center designed for televisions up to 60 inches. It features a customizable design allowing for straight or L-shaped corner configurations, integrated smart RGB LED lighting, and a convenient charging station. This unit also provides ample storage with six fabric drawers and three open shelves.



Image: The BTHFST DT005 TV Stand shown in two configurations: a corner installation (top) and a parallel installation (bottom). Dimensions are indicated for both setups, highlighting its adaptable design.

## SETUP AND ASSEMBLY

Assembly of the BTHFST DT005 TV Stand is designed to be straightforward. The packaging includes detailed instructions and all necessary components are labeled for easy identification. It is recommended to follow the instructions carefully to ensure proper and stable construction.

### Configuration Options

This TV stand offers a changeable design, allowing it to be configured in up to four styles. The open shelf unit can be positioned on either the left or right side to create a straight or L-shaped corner TV stand, adapting to your room layout and space-saving needs.

### Assembly Video Guide

Your browser does not support the video tag.

Video: This video provides step-by-step assembly instructions for a similar dresser TV stand, demonstrating the process of putting together the frame, shelves, and drawers. It highlights the ease of assembly with labeled parts.

## OPERATING INSTRUCTIONS

### Smart LED Lighting

The entertainment center includes smart RGB LED lights. These lights can be controlled via a dedicated mobile application or a physical key control. Users can select from over 60,000 DIY colors, dynamic modes, voice control, music mode, and a timing function to customize the lighting ambiance.

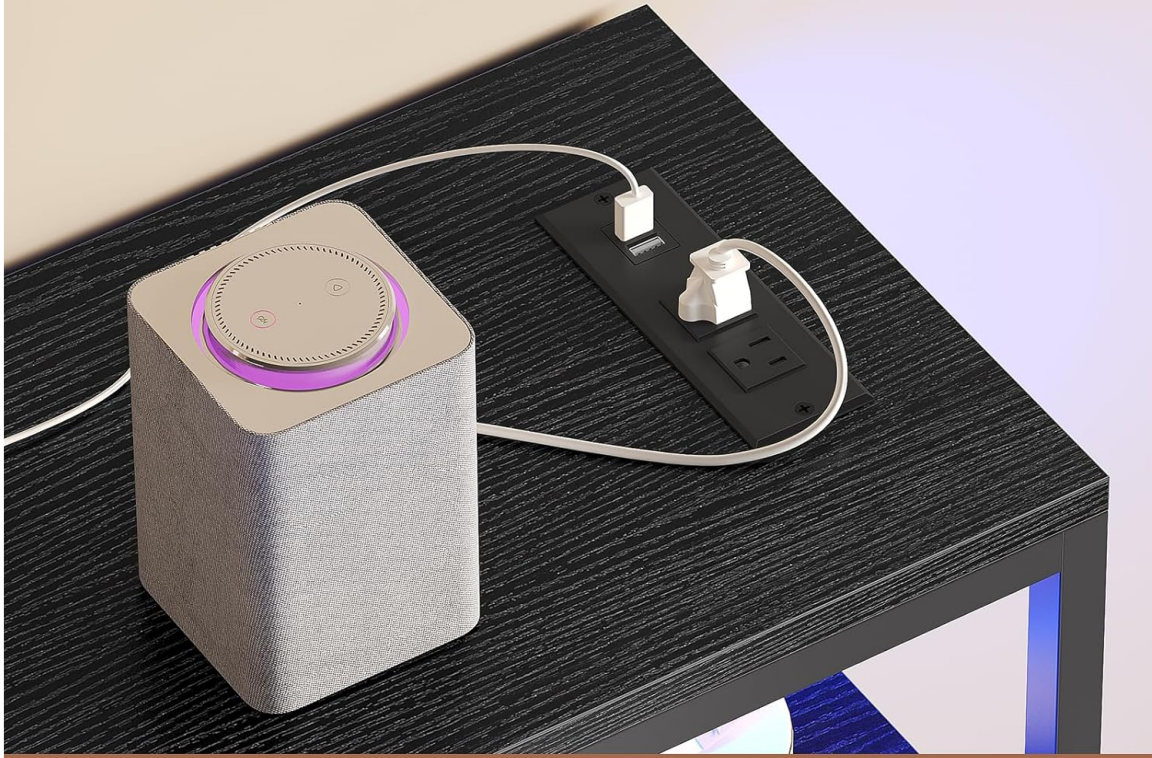


Image: The BTHFST DT005 TV Stand showcasing its RGB LED lights in a living room setting. The image illustrates the various color options and control methods (APP Control, Key Control, Dynamic Modes, Music Mode, Timing Function).

### Integrated Charging Station

A handy charging station is built into the TV stand, featuring 2 USB ports and 2 AC outlets. This provides convenient access for charging various electronic devices such as TVs, gaming gear, phones, and other electrical appliances.

# Handy Charging Station



**125V / 12A**  
[2AC Outlets]



**5V / 2A**  
[2 USB Ports]



**5.0-Foot**  
[Power Cords]

Image: A detailed view of the integrated charging station on the BTHFST DT005 TV Stand, showing two AC outlets and two USB ports, with a phone and smart speaker connected for charging.

## LED and Charging Station Video

Your browser does not support the video tag.

Video: This video demonstrates the LED lighting features and the functionality of the charging station on the TV stand, showing how devices can be powered and charged directly from the unit.

## MAINTENANCE

To maintain the appearance and functionality of your BTHFST DT005 TV Stand, regularly wipe surfaces with a soft, dry cloth. Avoid using harsh chemicals or abrasive cleaners, which can damage the finish. Ensure all connections for the charging station and LED lights are secure. Periodically check and tighten any loose screws to maintain structural integrity.

### Drawer Care

The PU fabric drawers can be spot cleaned with a damp cloth and mild soap if necessary. Allow them to air dry completely before reinserting into the frame. Avoid overloading drawers to prevent stretching or damage to the fabric.

## TROUBLESHOOTING

### LED Lights Not Working

- Check if the power adapter is securely plugged into a working outlet.
- Ensure all connections between the LED strip and the control unit are firm.
- Verify that the mobile app or key control is functioning correctly and within range.

### Charging Station Issues

- Confirm the main power cord for the charging station is plugged into a live wall outlet.
- Test the outlets and USB ports with different devices to isolate the issue.
- Ensure devices are properly connected to the USB ports or AC outlets.

### Stability Concerns

- Check all screws and bolts for tightness. Retighten if necessary.
- Ensure the unit is placed on a flat, level surface. Adjust the feet if your floor is uneven.
- Verify that the anti-tip kits are correctly installed and secured to the wall.

## SPECIFICATIONS

Feature	Detail
Brand	BTHFST
Model Name	DT005
Color	Black
Product Dimensions	53.5"D x 11.8"W x 34.5"H
Material	Engineered Wood, Fabric, Metal
Recommended TV Size	Up to 60 inches
Number of Drawers	6 (PU Fabric)
Number of Open Shelves	3
Charging Station	2 USB ports, 2 AC outlets
Special Features	Customizable, Scratch Resistant, LED Lights, Anti-tip Kits
Assembly Required	Yes



Image: The BTHFST DT005 TV Stand with a television placed on top, demonstrating its capacity to hold TVs up to 60 inches.

## SAFETY INFORMATION

Always follow the assembly instructions carefully. Keep the open shelves and drawers clear of heavy or sharp objects to prevent accidents. Do not overload the shelves or drawers to maintain stability. Always unplug the charging station when not in use to prevent electrical hazards. Utilize the included anti-tip kits to secure the TV stand to the wall, especially in households with children or pets, to prevent tipping accidents.



Image: A visual representation of the anti-tip design, showing how the TV stand should be secured to the wall to

prevent accidental tipping.

## **WARRANTY AND SUPPORT**

For any questions, concerns, or assistance with your BTHFST DT005 TV Stand, please contact our professional Online Customer Services directly. We are committed to resolving any issues you may encounter.

Specific warranty details are typically provided with your purchase documentation. Please refer to the included warranty card or contact customer service for information regarding warranty coverage and claims.