

7MAGIC 7MAGIC Flat Iron

7MAGIC Ceramic Hair Straightener User Manual

Model: 7MAGIC Flat Iron

1. IMPORTANT SAFETY INFORMATION

Please read all safety warnings before use to prevent injury or damage.

- **Burn Hazard:** Surfaces become extremely hot during use. Avoid direct contact with skin, especially the scalp, ears, and neck.
- **Electric Shock Risk:** Keep the appliance away from water. Do not use it near bathtubs, sinks, showers, or other water sources. Never immerse the appliance in water or other liquids.
- **Fire Risk:** Unplug the appliance immediately after use and when not in use. Do not leave it unattended when plugged in. Ensure the appliance is placed on a heat-resistant surface when hot.
- **Children:** Keep out of reach of children. This appliance is not intended for use by persons with reduced physical, sensory, or mental capabilities, or lack of experience and knowledge, unless they have been given supervision or instruction concerning use of the appliance by a person responsible for their safety.
- **Damage:** Do not operate the appliance with a damaged cord or plug, or if it has been dropped or damaged in any manner. Contact customer service for repair.
- **Storage:** Allow the appliance to cool completely before storing. Do not wrap the cord around the appliance.

2. PRODUCT OVERVIEW

The 7MAGIC Ceramic Hair Straightener is a professional 2-in-1 styling tool designed for both straightening and curling hair. It features advanced ceramic plates, rapid heating technology, and ionic conditioning for smooth, shiny results.



Image 2.1: The 7MAGIC Ceramic Hair Straightener in Midnight Blue, showcasing its sleek design and LCD display.

Key Features:

- **2-in-1 Styling:** Functions as both a hair straightener and a curler.
- **Versatile Temperature Control:** 11 precise settings from 270°F to 450°F, suitable for all hair types.
- **LCD Display:** For easy temperature monitoring and adjustment.
- **Rapid PTC Heating:** Heats up in approximately 30 seconds.
- **Ionic Technology:** Emits 20 million negative ions to reduce frizz, static, and enhance shine.
- **3D Floating Plates:** Ceramic-coated plates conform to hair contours, reducing tugging and ensuring a smooth glide.
- **60-Minute Auto Shut-off:** For safety and energy efficiency.

3. SETUP AND FIRST USE

1. **Unpack:** Carefully remove the hair straightener and all accessories from the packaging.
2. **Inspect:** Check the appliance for any visible damage. Do not use if damaged.
3. **Plug In:** Insert the power plug into a standard electrical outlet. Ensure your hands are dry.
4. **Initial Heat-up:** For the first use, allow the straightener to heat up to its maximum temperature and then cool down. This helps to cure the plates.

4. OPERATING INSTRUCTIONS

4.1 Power On/Off and Temperature Adjustment

1. **Power On:** Press and hold the power button () for a few seconds until the LCD display illuminates.
2. **Adjust Temperature:** Use the '+' and '-' buttons to select your desired temperature. The LCD display will show the current temperature as it heats up.
3. **Power Off:** Press and hold the power button () again until the display turns off.

LCD display & 11 Temperature

Meet different hair needs



450°F - 430°F

For coarse and thick hair types.



410°F - 375°F

For fine and soft hair types.



355°F - 320°F

For creating curls and waves.



300°F - 265°F

Creates soft bends and gentle curls.



Image 4.1: The LCD display and temperature controls, illustrating recommended settings for different hair types.

4.2 Recommended Temperature Settings

Temperature Range	Hair Type/Style
265°F - 300°F	For creating soft bends and gentle curls.
320°F - 355°F	For creating curls and waves.
375°F - 410°F	For fine and soft hair types.
430°F - 450°F	For coarse and thick hair types.

Note: Always start with a lower temperature and increase as needed to avoid heat damage. Use a heat protectant spray.

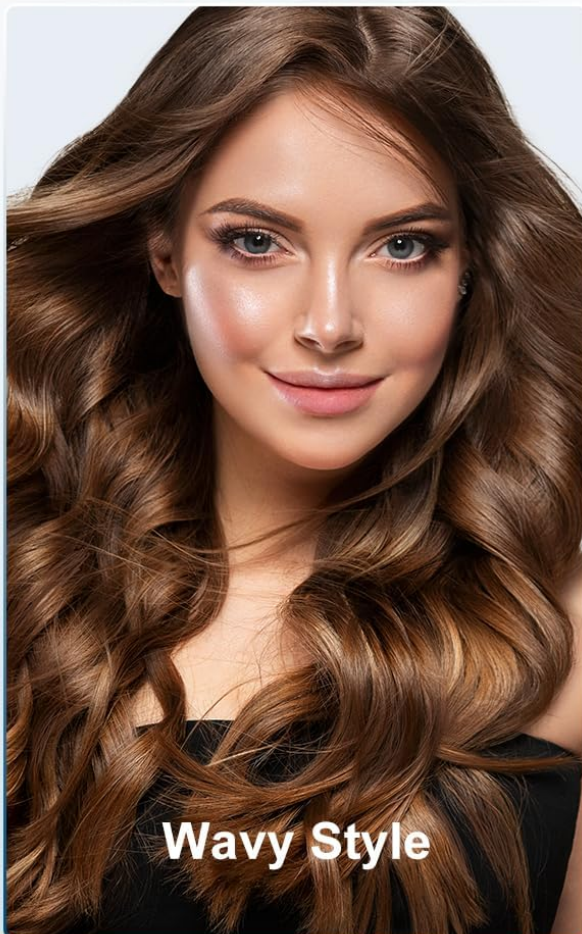
4.3 Straightening Hair

1. Ensure hair is clean, dry, and detangled. Apply a heat protectant.
2. Divide hair into small, manageable sections (approximately 1-2 inches wide).
3. Take one section and place it between the heating plates, close to the roots.
4. Gently close the plates and glide the straightener slowly and steadily down the hair section, from root to tip. Avoid stopping in one place to prevent heat damage.
5. Repeat on all sections until desired straightness is achieved.

Before Styling:
Natural Look



7 MAGIC Versatile 2-In-1 Styler:



Wavy Style



Smooth Finish

Image 4.2: Demonstrating the 2-in-1 versatility for both smooth, straight hair and wavy styles.

4.4 Curling Hair

1. Prepare hair as for straightening.
2. Take a small section of hair. Clamp the straightener around the hair section where you want the curl to begin.
3. Rotate the straightener 180 degrees away from your face, then slowly pull it down through the hair section to the ends.
4. Release the hair and allow the curl to cool and set. Repeat for all sections.



Image 4.3: Visual guide for creating perfectly straight hair and effortless beach waves.

4.5 Ionic Technology for Enhanced Shine

The integrated ion generator releases 20 million negative ions during use. These ions help to neutralize static, reduce frizz, and seal the hair cuticle, resulting in smoother, shinier, and healthier-looking hair.



Image 4.4: Illustration of negative ions combating frizz and static for smooth, shiny hair.

4.6 Safety Features

- **60-Minute Auto Shut-off:** The appliance will automatically turn off after 60 minutes of inactivity for safety and energy saving.
- **Safety Lock Function:** Use the lock switch to keep the plates closed for compact storage and to prevent accidental opening.

Portable & Versatile

Perfect gift, perfect companion!



Image 4.5: Overview of safety and user-friendly features including auto shut-off and safety lock.

5. CARE AND MAINTENANCE

- Cleaning:** Ensure the appliance is unplugged and completely cool before cleaning. Wipe the plates and exterior with a soft, damp cloth. Do not use abrasive cleaners or harsh chemicals.
- Storage:** Once cool, engage the safety lock to keep the plates closed. Store the straightener in a dry, safe place, away from moisture and extreme temperatures. Do not wrap the power cord tightly around the appliance, as this can damage the cord.

6. TROUBLESHOOTING

Problem	Possible Cause	Solution
Appliance does not turn on.	Not plugged in correctly, power outlet issue, or internal fault.	Ensure the plug is fully inserted. Test the outlet with another device. If still not working, contact customer support.
Appliance is not heating up.	Power issue, or internal heating element fault.	Verify power connection. Ensure the temperature is set above the minimum. If the issue persists, contact customer support.
Hair is tugging or snagging.	Hair not properly detangled, or plates are dirty.	Ensure hair is thoroughly detangled before styling. Clean the plates as per maintenance instructions.
Appliance turns off unexpectedly.	60-minute auto shut-off activated.	This is a safety feature. Simply turn the appliance back on if you wish to continue styling.

7. PRODUCT SPECIFICATIONS

- **Model:** 7MAGIC Flat Iron
- **Brand:** 7MAGIC
- **Material:** Ceramic plates
- **Product Dimensions:** 11 x 1.2 x 1.2 inches

- **Weight:** 1 Pound
- **Temperature Range:** 270°F - 450°F (11 settings)
- **Heating Technology:** PTC Rapid Heating
- **Special Features:** Ionic Technology, 3D Floating Plates, 60-min Auto Shut-off, Safety Lock Function

8. WARRANTY AND SUPPORT

For warranty information and customer support, please refer to the warranty card included with your product or contact 7MAGIC customer service directly. Keep your purchase receipt as proof of purchase.

Manufacturer: 7MAGIC

9. PRODUCT VIDEOS

No relevant official product videos from the seller were found in the provided data to embed in this manual.