

[Manuals.plus](#) /

> [IRIS OHYAMA](#) /

> IRIS OHYAMA DKC85A1-W Drum Washing Machine User Manual

IRIS OHYAMA DKC85A1-W

IRIS OHYAMA DKC85A1-W Drum Washing Machine User Manual

Model: DKC85A1-W | Brand: IRIS OHYAMA

[Safety Information](#)

[Setup](#)

[Operation](#)

[Maintenance
& Support](#)

[Troubleshooting](#)

[Specifications](#)

[Warranty](#)

INTRODUCTION

This manual provides essential information for the safe and efficient use of your IRIS OHYAMA DKC85A1-W drum washing machine. Please read it thoroughly before operating the appliance and keep it for future reference.



Image: IRIS OHYAMA DKC85A1-W Drum Washing Machine, left-opening model with 8kg wash and 5kg dry capacity.

SAFETY INFORMATION

Always adhere to the following safety guidelines to prevent injury or damage to the appliance:

- Do not install the washing machine in areas with excessive moisture, such as bathrooms or near water sources.

- Avoid installing the appliance in locations exposed to wind and rain, such as balconies or gardens.
- Ensure the appliance is used for general household purposes only. Use in commercial settings may void the warranty.
- Keep children away from the appliance during operation. The child lock feature should be activated to prevent accidental opening of the door.
- Before any maintenance or cleaning, always unplug the appliance from the power outlet.

必ずお読みください

**一般家庭用以外でご使用にならないでください。
無償保証の対象外になることがあります。**

■設置に関する注意事項

- 水回り、浴室など湿気のある場所には絶対に据え付けない
- ベランダ・庭など風雨にさらされる場所に据え付けない

■購入前に必ず確認

- 防水パンの有無・大きさ
- 設置箇所の水栓形状
- 排水口の位置
- 扉が開くスペースがあるか



Image: Important notes regarding installation location and usage restrictions for the washing machine.

SETUP

Installation Requirements

Proper installation is crucial for the performance and longevity of your washing machine. Consider the following:

- **Space:** Ensure at least 10cm width clearance for the product dimensions. A minimum of 45cm space above the unit is required due to product specifications.
- **Water Supply:** Connect the water supply hose securely.

- **Drainage:** Connect the drain hose. Ensure the drain hose connection side has at least 9cm clearance.
- **Leveling:** Use the adjustable feet and included spanner to ensure the machine is perfectly level.
- **Power:** Connect to a standard AC100V power outlet.

商品寸法+10cmの幅が必要です。

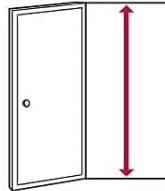
《搬入における確認項目》

《商品の寸法》



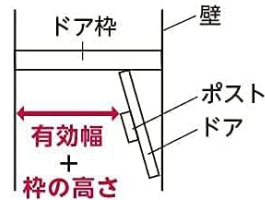
《玄関の高さ》

商品寸法+10cm



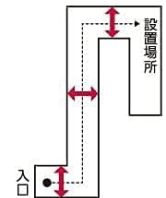
《玄関の幅》

商品寸法+10cm



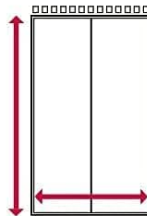
《廊下の幅》

商品寸法+10cm



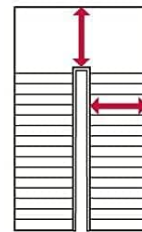
《エレベータの幅》

商品寸法+10cm



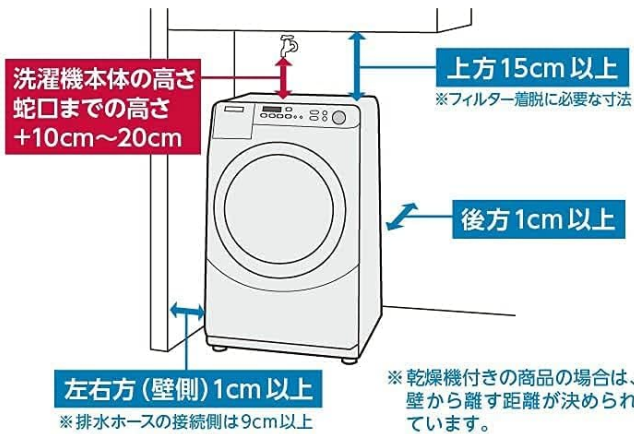
《階段の幅》

商品寸法+10cm



※階段の形状、天井の高さにご注意ください。
※手すりの幅を注意してください。

《設置における確認項目》



防水パンの有無と内側サイズをチェック



※排水エルボ・足台の有無と排水口位置によって、追加費用がかかることがあります。

Image: Detailed diagram showing required clearances for installation, including height, width, and depth, as well as considerations for doorways and stairs.

Initial Setup

1. Remove all transport bolts and packaging materials. Transport bolts are installed at the factory and must be removed before use.
2. Connect the water supply hose to the water tap and the machine.
3. Connect the drain hose to a suitable drain.
4. Plug the power cord into a grounded electrical outlet.
5. Perform a test wash cycle without laundry to check for leaks and proper operation.

家電・家具 設置回収サービス

※Amazon.co.jpが販売、発送する商品のみ

STEP 1

カートに入れてレジに進み、お届け日時選択ページで配送オプションと配達日時を選択してください。

※購入前に搬入・設置における確認項目もよくご確認ください。
※ご注文確定後は、サービスの追加や変更ができません。

STEP 2

配達前日または当日朝までに配送会社から確認の電話をします。

STEP 3

リサイクル家電を回収します。

※旧品回収を含むサービスを選択された場合。
※家電リサイクル料金は当日現金で別途お支払いが必要です。

STEP 4

設置・接続を行います。

※設置を含むサービスを選択された場合。

STEP 5

梱包材を回収します。

洗濯機

開梱・電源、アース線、上排水管の取り付け・給排水テスト
水漏れ確認(上水管)・排水確認・梱包材の回収

Image: Steps for installation and connection, including water supply, drainage, and power, along with packaging removal.

OPERATING INSTRUCTIONS

Control Panel Overview

The control panel allows you to select various wash and dry cycles, adjust settings, and manage the machine's functions. Familiarize yourself with the buttons and display.

操作パネル

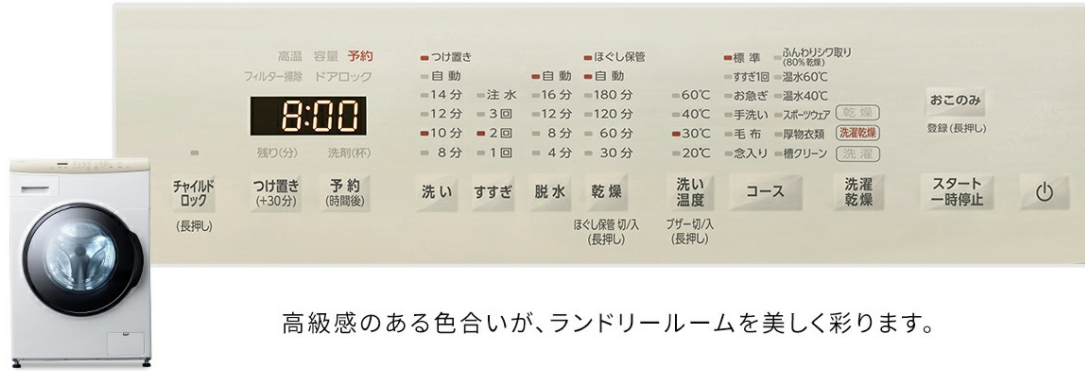


Image: The control panel of the IRIS OHYAMA DKG85A1-W washing machine, showing various program selections and settings.

Washing Modes

The machine offers various washing courses to suit different fabric types and cleaning needs:

- **Warm Water Wash:** Effectively removes odors and yellowing. Note: Not all yellowing or odor-causing bacteria can be removed.
- **60°C Course:** Ideal for underwear and white items, providing thorough sterilization and odor removal.
- **40°C Course:** Suitable for daily wear and delicate items, targeting sebum stains and odors.
- **40°C Course + 30-minute Soak:** For stubborn yellowing, restoring original whiteness.
- **20°C Course:** Optimized for washing in colder temperatures, such as during winter, to maintain cleaning performance.
- **Standard Course:** For everyday washing.
- **Hand Wash Course:** For delicate items like wool and lace.
- **Blanket Course:** For large items like comforters and blankets.
- **Sportswear Course:** For light sportswear, with quick wash and dry.
- **Thick Clothes Course:** For items like sweatshirts and hoodies that are difficult to dry.



Image: Comparison of baby bibs before and after washing with a standard course versus a 60°C warm water course, showing improved stain removal.

普段着やおしゃれ着に

温水40°Cコース

いつもの洗濯では落としきれない
繊維の奥に潜んだ**皮脂汚れ**を落とし、
ニオイの原因菌を減らす。

皮脂汚れ試験※



※ 衣類の汚れは人工皮脂によるものです。人工皮脂が付着したカットソーシャツを「標準コース」と「温水40°Cコース」で比較。(アイリスオーヤマ調べ)

Image: Comparison of shirt collars showing sebum stain removal with a standard course versus a 40°C warm water course.

温水40°Cコース+つけ置き約30分で黄ばみもすっきり!

黄ばみ試験※



※ 衣類の汚れは人工皮脂によるものです。人工皮脂が付着したカットソーシャツを「標準コース」と「温水40°Cコース」+「つけ置き約30分」で比較 (アイリスオーヤマ調べ)

Image: Comparison of shirt sleeves showing yellowing removal with a standard course versus a 40°C warm water course with a 30-minute soak.

冬の洗濯に!

温水20°Cコース

温水洗浄で、冬場でも汚れ落ちをキープ!
ボタンを押して、洗い温度を変更するだけ!

冬場の水温との洗浄比較



Image: Comparison of stain removal effectiveness in cold water (approx. 5°C) versus a 20°C course, demonstrating improved cleaning in winter.

Drying Modes

The machine features a 5kg drying capacity and various drying options:

- **Wrinkle Care Course:** Reduces wrinkles by performing a lighter drying cycle after spin-drying, minimizing ironing time.
- **Shortest 30-minute Drying:** Convenient for finishing drying or when you need items slightly dry.
- **Warm Water Wash + Dry:** Combines powerful warm water washing with drying for thorough cleaning and drying.
- **Five Sensing Technology:** Utilizes five sensors (warm air temperature, drum temperature, intake air temperature, laundry amount, and operation time) to ensure clothes are dried gently and thoroughly.

ふんわり乾燥
水平ドラムで衣類が絡みにくく、シワを抑えてふんわり仕上げる。



※アイリスオーヤマ社実験:衣類の量・素材・一緒に乾燥するものや使用環境によって効果は異なります。※写真はイメージです。



※画像の商品は「FLK852-WJ」です。

Image: Illustration of the wrinkle care drying feature, showing how clothes are less wrinkled compared to standard drying.



※画像はイメージです。

Image: Diagram illustrating the Five Sensing drying technology, which uses multiple sensors to optimize drying for different laundry loads.

Special Features

- **Reservation Timer:** Set the machine to finish washing or washing and drying after a specified number of hours (Wash: approx. 3-19 hours; Wash & Dry: approx. 7-19 hours). This allows you to align laundry completion with your schedule, such as waking up or returning home.
- **Child Lock:** Press and hold for 3 seconds or more to lock the door, preventing children from accidentally opening it during operation.
- **Custom Course Registration:** Register frequently used courses or original combinations as "My Favorite" for

convenient one-button access.

予約タイマー

何時間後に洗濯を終了させたいか、タイマー予約可能。
決めた時間に洗濯が終わるから、時間を有効に活用！

洗濯	約3~19時間後
洗濯乾燥	約7~19時間後



Image: Illustration of the reservation timer feature, showing how to set the machine to finish at a desired time, such as upon waking or returning home.

Video Demonstration

Watch this video for a visual guide on the IRIS OHYAMA drum washing machine's features, including warm water wash, odor and yellowing removal, sebum stain removal, and winter washing.

Your browser does not support the video tag.

Video: Overview of IRIS OHYAMA Drum Washing Machine features (Warm Water Wash, Odor/Yellowing Removal, Sebum Stain Removal, Winter Washing).

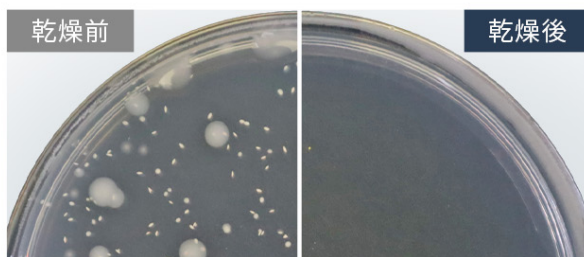
MAINTENANCE

Regular maintenance ensures optimal performance and extends the lifespan of your washing machine.

- **Detergent Dispenser Case:** The detergent dispenser case can be easily removed and washed completely.
- **Drying Filter:** Simply remove lint and debris from the mesh part of the drying filter.
- **Drum Clean Course:** Use the "Drum Clean Course" with approximately 60°C warm water to keep the drum clean. Regular use helps prevent bacteria and black mold growth. When using chlorine-based bleach or washing machine cleaner, set the wash temperature to 30°C or below.

ニオイ菌を抑える

温風を直接衣類に当て素早く乾燥。菌の繁殖も抑える。



※〈除菌の試験内容〉 〔試験機関〕日本微生物クリニック株式会社 〔試験成績書発行年月日〕2023年8月29日 〔試験成績書発行番号〕IRS220726EK02
〔除菌方法〕「標準コース」洗濯乾燥による〔試験方法〕菌液付着試験布の生菌数測定〔除菌の対象〕衣類に付着した菌〔試験結果〕菌の減少率99%以上(自社換算値)全ての菌に効果があるわけではありません。
※画像はイメージです。

Image: Comparison showing the suppression of odor-causing bacteria after drying with warm air.

TROUBLESHOOTING

If you encounter any issues with your washing machine, refer to the following common solutions. For persistent problems, contact customer support.

- **Machine not starting:** Ensure the power cord is securely plugged in and the door is properly closed. Check if the child lock is activated.
- **Water leakage:** Verify that the water supply and drain hoses are correctly connected and tightened.
- **Unusual noise/vibration:** Ensure the machine is level and that all transport bolts have been removed. Check for any foreign objects in the drum.
- **Clothes not drying properly:** Clean the drying filter. Ensure the load size is appropriate for the drying capacity (max 5kg).
- **Error codes:** Consult the full product manual for specific error code meanings and solutions.

SPECIFICATIONS

Feature	Detail
Rated Voltage	AC100V
Rated Frequency	50/60Hz
Rated Input	1000W
Motor Power Consumption	200W
Heater Power Consumption (Warm Water)	800W
Heater Power Consumption (Warm Air)	800W
Standard Washing Capacity	8kg
Standard Spin-Dry Capacity	8kg
Standard Drying Capacity	5kg
Standard Water Usage	80L
Standard Water Level	30L
Protection Class	IPX4

Feature	Detail
External Dimensions (W x D x H)	Approx. 59.5cm x 65.2cm x 90.8cm (main unit only)
Weight	Approx. 72kg
Country of Origin	China
Included Accessories	Water supply hose, Drain hose, Hose clip, Transport bolt hole caps x4, Transport bolts x4 (pre-installed), Spanner (for transport bolts & adjustable feet), Connection port cap (pre-installed)

定格電圧	AC100V
定格周波数	50/60Hz
定格入力	1000W
電動機消費電力	200W
温水用電熱装置消費電力	800W
温風用電熱装置消費電力	800W
標準洗濯容量	8.0kg
標準脱水容量	8.0kg
標準使用水量	80L
標準乾燥容量	5kg
標準水量	30L
保護等級	IPX4

Image: Table summarizing the technical specifications of the IRIS OHYAMA DKC85A1-W washing machine.



Image: Diagram showing the dimensions of the IRIS OHYAMA DKC85A1-W washing machine and a list of included accessories.

WARRANTY & SUPPORT

Your IRIS OHYAMA DKC85A1-W drum washing machine comes with **one-year manufacturer's warranty** from the date of purchase. This warranty covers defects in materials and workmanship, excluding consumables.

For warranty claims, technical support, or service inquiries, please refer to the contact information provided with your purchase documentation or visit the official IRIS OHYAMA website.

