

TOSOT TST-MZ-M36-Q9999

TOSOT Cosmo Series 36,000 BTU Quad 4 Zone Mini Split AC with Heat Pump Instruction Manual

Model: TST-MZ-M36-Q9999

1. INTRODUCTION

This manual provides essential information for the safe and efficient installation, operation, and maintenance of your TOSOT Cosmo Series 36,000 BTU Quad 4 Zone Mini Split AC with Heat Pump. Please read this manual thoroughly before installation and use, and retain it for future reference. This system is designed to provide individual temperature control across four distinct zones using a single outdoor unit and four 9,000 BTU indoor units.

2. SAFETY INFORMATION

Important Safety Instructions:

- Installation and maintenance must be performed by qualified, certified HVAC technicians in accordance with all local and national electrical and safety codes.
- Ensure the power supply matches the unit's specifications (230V).
- Do not attempt to repair or modify the unit yourself. Contact qualified service personnel.
- Proper grounding is essential to prevent electrical shock.
- Ensure proper ventilation around the outdoor unit.
- Keep children and pets away from the outdoor unit during operation.
- Refrigerant handling requires specialized tools and training.

3. PACKAGE CONTENTS

Verify that all components are present before beginning installation. Your TOSOT Cosmo Series system includes the following:

Indoor Unit Components (x4 sets)

- 1 x Indoor Unit
- 5 x Drywall Anchor
- 2 x Flare Nut
- 4 x Remote Holder Fixing Screw
- 5 x Mounting Plate Fixing Screw
- 2 x AAA Battery
- 1 x Remote Control Holder
- 1 x App Control Quick Guide
- 1 x Remote Control
- 1 x Mounting Plate
- 1 x Insulation Sleeve
- 1 x 20 ft Signal Cable

Outdoor Unit Components (x1 set)

- 1 x Outdoor Unit
- 1 x Drain Joint
- 1 x User Manual

Installation Accessories (x2 sets)

- 1 set x Refrigerant Pipe (16.4 ft copper line set)
- 1 x Sealing Gum
- 2 x Tape
- 1 x Drain Hose
- 1 x Wall Sleeve



Figure 3.1: Overview of included components for the TOSOT Quad Zone Mini Split AC system.

4. SETUP AND INSTALLATION

The TOSOT Cosmo Series Mini Split system requires professional installation. While designed for easier installation compared to central AC systems, specific HVAC and electrical knowledge is necessary. The system includes a 16.4-foot copper line set for each indoor unit, but the power cord is not included and must be sourced separately.

4.1 Key Installation Steps

- Mounting Indoor Units:** Securely mount each of the four indoor units in their designated zones, ensuring proper clearance for airflow and maintenance.
- Outdoor Unit Placement:** Position the single outdoor unit on a stable, level surface, allowing adequate space for air circulation and service access.
- Refrigerant Line Set Connection:** Connect the provided copper line sets between each indoor unit and the outdoor unit. This step requires precise flaring, torquing, and the use of Nylog sealant to prevent

leaks.

4. **Electrical Wiring:** Connect the electrical wiring according to the wiring diagram provided in the detailed user manual. Ensure the correct voltage (230V) and breaker size (e.g., 40A) are used.
5. **Vacuuming the System:** Evacuate the refrigerant lines to remove air and moisture. This is a critical step for system efficiency and longevity. A vacuum pump must be used to pull a deep vacuum for at least 30 minutes per line set, and the vacuum must hold for at least an hour to confirm no leaks.
6. **Refrigerant Release:** Once the vacuum test is successful, carefully release the R32 refrigerant from the outdoor unit into the system.
7. **Drainage Connection:** Ensure all indoor units have proper condensate drainage connected to prevent water leaks.

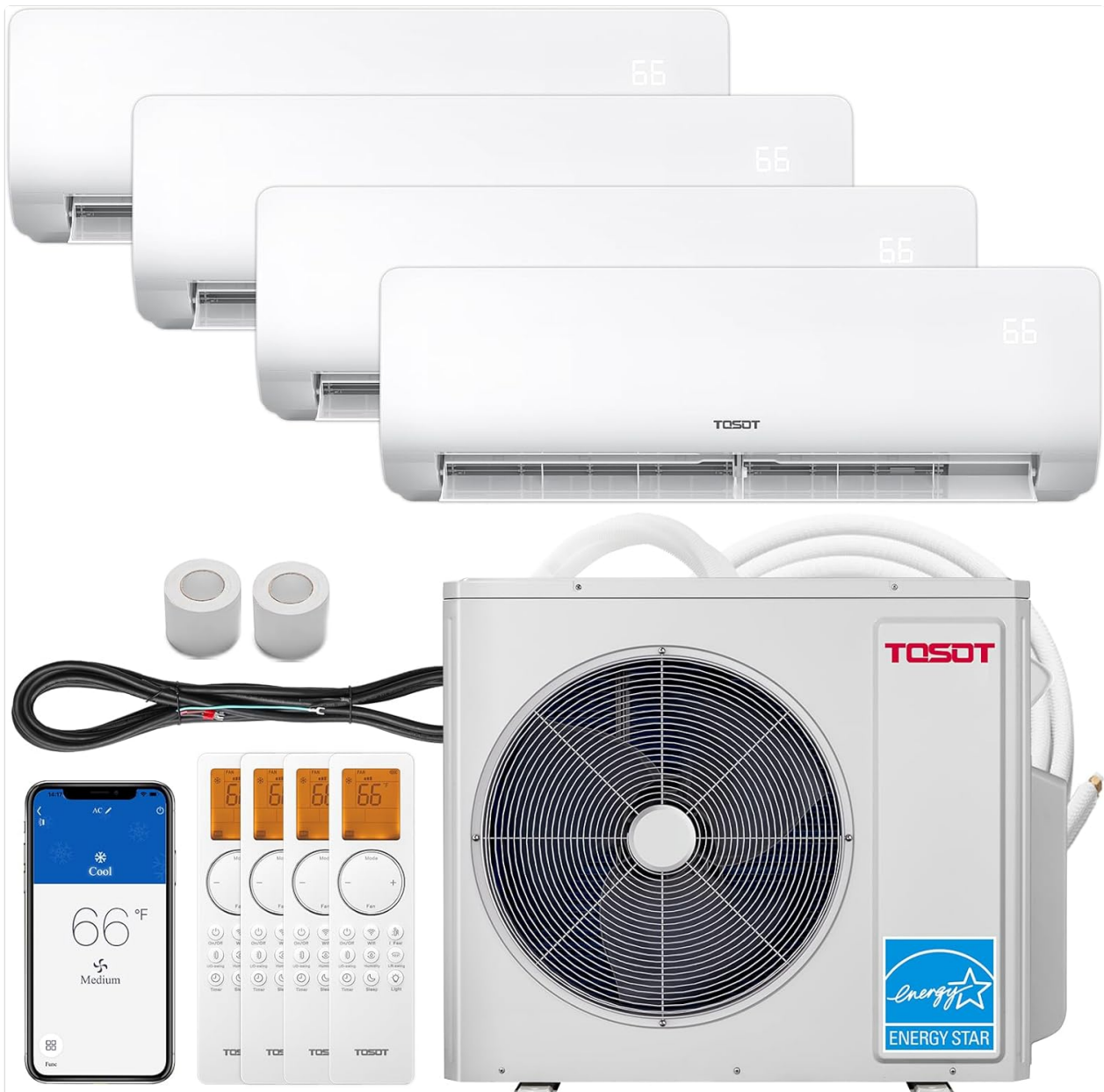


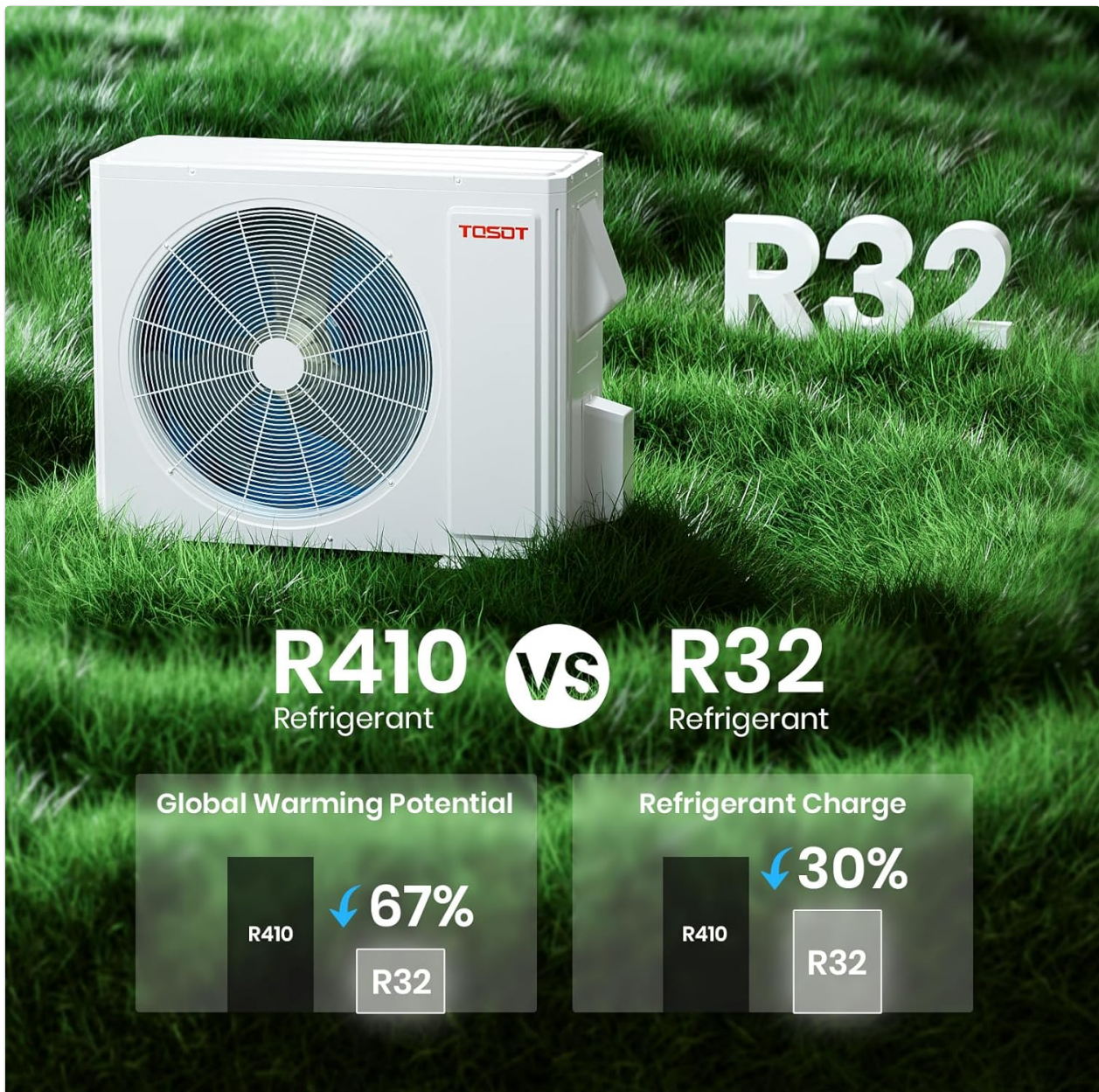
Figure 4.1: The TOSOT Quad Zone Mini Split AC system components.



Figure 4.2: Multi-zone installation example.

4.2 Refrigerant Information

This system utilizes R32 refrigerant, which has a 67% lower Global Warming Potential (GWP) and requires a 30% lower refrigerant charge compared to R410A systems, contributing to environmental benefits.



5. OPERATING INSTRUCTIONS

Your TOSOT Mini Split system offers versatile climate control for up to four zones, with individual temperature settings and operating modes.

5.1 Operating Modes

The system supports the following modes:

- **Cooling:** Provides cooling to maintain desired room temperature.
- **Heating:** Functions as a heat pump, providing warmth even in extreme cold conditions (down to -22°F).
- **Fan:** Circulates air without heating or cooling.
- **Dehumidifying:** Reduces humidity levels in the room.



Figure 5.1: Operating Modes (Cooling, Heating, Fan, Dehumidifying).

5.2 Temperature Control

Each indoor unit can be set to a desired temperature between 61°F and 86°F (16°C and 30°C) independently. The advanced inverter technology ensures stable temperatures and quiet operation.



Figure 5.2: Advanced Inverter Technology and Operating Range.

5.3 Smart Control

Manage your system from anywhere using the Gree+ app on your smartphone. The system also supports voice control for hands-free adjustments. Each indoor unit comes with its own remote control for direct adjustments.

SMART CONTROL ANYWHERE

Adjust your AC settings anytime, anywhere with the Gree+ / TOSOT+ app and voice control.



Figure 5.3: Smart Control via App and Remote.

6. MAINTENANCE

Regular maintenance ensures optimal performance and longevity of your TOSOT Mini Split system.

6.1 Indoor Unit Maintenance

- **Filter Cleaning:** Clean the air filters every 2-4 weeks, or more frequently depending on usage and air quality. Refer to the detailed user manual for instructions on how to remove and clean the filters.
- **Coil Cleaning:** Periodically inspect and clean the indoor coil. This should ideally be done by a professional.

6.2 Outdoor Unit Maintenance

- **Clear Debris:** Keep the area around the outdoor unit clear of leaves, dirt, and other obstructions to ensure proper airflow.
- **Coil Cleaning:** Clean the outdoor coil annually, or as needed, to remove accumulated dirt and debris. This can be done with a garden hose, but avoid high-pressure sprays.

- **Drainage Check:** Ensure the drain pan and drain holes are clear to prevent water buildup.

7. TROUBLESHOOTING

If you encounter issues with your system, refer to the following basic troubleshooting steps. For complex problems, contact a qualified HVAC technician.

7.1 Common Issues and Solutions

- **Unit Not Turning On:** Check power supply, circuit breaker, and ensure the remote control batteries are functional.
- **Insufficient Cooling/Heating:** Verify correct mode selection and temperature settings. Clean air filters. Ensure outdoor unit is not obstructed.
- **Unusual Noises:** Minor noises during operation are normal. If loud or unusual noises occur, contact a technician.
- **Water Leaks:** Check indoor unit drainage hose for kinks or blockages. Ensure outdoor unit is level.
- **Remote Control Not Working:** Replace batteries. Ensure no obstructions between remote and indoor unit.

8. SPECIFICATIONS

Key technical specifications for the TOSOT Cosmo Series 36,000 BTU Quad 4 Zone Mini Split AC with Heat Pump (Model TST-MZ-M36-Q9999):

Specification	Value
Brand	TOSOT
Model Number	TST-MZ-M36-Q9999
System Type	Quad 4 Zone Mini Split AC with Heat Pump
Total Capacity	36,000 BTU (3 Tons)
Indoor Unit Capacity (each)	9,000 BTU
SEER2 Rating	21
HSPF2 Rating	10
Voltage	230 Volts
Outdoor Unit Dimensions (D x W x H)	40.2" x 16.8" x 32.5"
Item Weight	339 pounds
Noise Level (Outdoor Unit)	63 Decibels
Operating Temperature Range (Heating)	-22°F to 118°F

Specification	Value
Refrigerant Type	R32
Included Components	Remote, User Manual
Estimated Coverage Area	1800 Square Feet



Figure 8.1: Energy Efficiency Rating (SEER2).

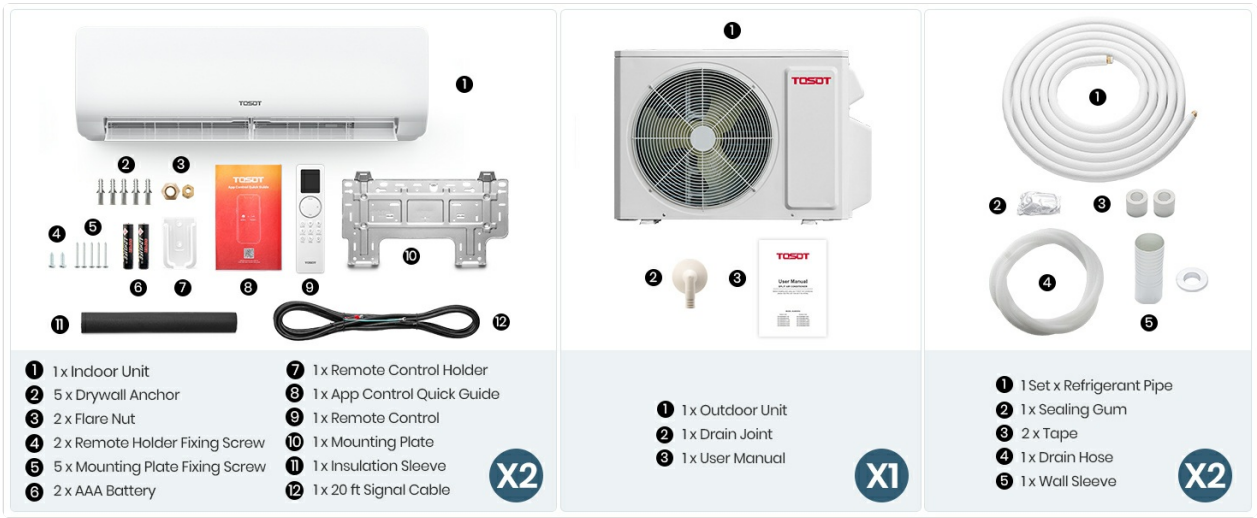


Figure 8.2: Indoor Unit Configuration and Coverage Area.

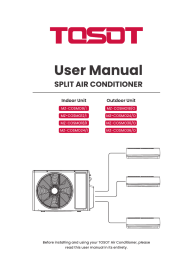
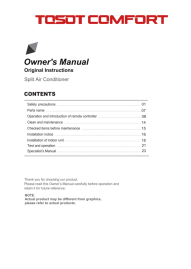

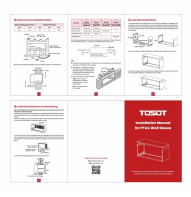
9. WARRANTY AND SUPPORT

TOSOT provides a five-year warranty for this product, ensuring peace of mind regarding your investment. For any service inquiries, technical support, or warranty claims, please contact TOSOT customer service. It is recommended to arrange installation only after receiving all parts of your order, as shipments may arrive in multiple packages or on pallets at different times.

For detailed support, refer to the contact information provided in the full user manual included with your product or visit the official TOSOT website.

Related Documents - TST-MZ-M36-Q9999

	<p>TOSOT Cosmo Series Split Air Conditioner User Manual</p> <p>User manual for TOSOT Cosmo Series Split Air Conditioners, detailing installation, operation, safety, maintenance, and troubleshooting for various MZ-COSMO models.</p>
	<p>TOSOT Split Airco Gebruikershandleiding: Installatie, Gebruik en Onderhoud</p> <p>Gedetailleerde gebruikershandleiding voor de TOSOT Split Airco, inclusief installatie-instructies, bediening met de afstandsbediening, onderhoudstips, veiligheidsmaatregelen en probleemoplossing.</p>

 The cover of the TOSOT Split Air Conditioner User Manual features the TOSOT logo at the top. Below it, the title "User Manual" is prominently displayed, followed by "SPLIT AIR CONDITIONER". A diagram shows an indoor unit connected to an outdoor unit. A small note at the bottom reads: "Before installing, please read your TOSOT air conditioner, please read the manual carefully."	<p>TOSOT Split Air Conditioner User Manual</p> <p>Comprehensive user manual for TOSOT Split Air Conditioners, including models MZ-COSMO9/1, MZ-COSMO12/1, MZ-COSMO18/1, MZ-COSMO24/1 (Indoor) and MZ-COSMO18/0, MZ-COSMO24/0, MZ-COSMO30/0, MZ-COSMO36/0 (Outdoor). Covers installation, operation, maintenance, safety, and troubleshooting.</p>
 The cover of the TOSOT COMFORT Owner's Manual features the TOSOT logo and "COMFORT" in large letters. Below, it says "Owner's Manual" and "Original Instructions". A table of contents is visible, listing sections like Safety Precautions, Installation, Operation, Maintenance, and Troubleshooting. A small note at the bottom reads: "Please read this manual carefully before using the air conditioner. It contains important information for safe and correct use. Please keep this manual for future reference."	<p>TOSOT Split Air Conditioner Owner's Manual</p> <p>Comprehensive owner's manual for TOSOT Split Air Conditioners, covering safety precautions, installation, operation, maintenance, and troubleshooting for models like TWH09AT19A6A and other TWH series units.</p>
 The cover of the TOSOT Clivia Deluxe TH-SCD Air Conditioner User Manual features the TOSOT logo and "Clivia Deluxe" in large letters. Below, it says "TH-SCD" and "R32 Refrigerant". A diagram shows the air conditioner unit. A small note at the bottom reads: "Please read this manual carefully before using the air conditioner. It contains important information for safe and correct use. Please keep this manual for future reference."	<p>TOSOT Clivia Deluxe TH-SCD Air Conditioner User Manual</p> <p>Comprehensive user manual for the TOSOT Clivia Deluxe TH-SCD series air conditioners, covering features, operation, specifications, maintenance, and safety. Includes R32 refrigerant information and WiFi connectivity details.</p>
 The cover of the TOSOT PTAC Wall Sleeve Installation Manual features the TOSOT logo and "PTAC Wall Sleeve" in large letters. Below, it says "Installation Manual". A diagram shows the wall sleeve unit. A small note at the bottom reads: "Please read this manual carefully before using the air conditioner. It contains important information for safe and correct use. Please keep this manual for future reference."	<p>TOSOT PTAC Wall Sleeve Installation Manual</p> <p>Comprehensive installation manual for TOSOT PTAC Wall Sleeves, detailing requirements, assembly, and installation procedures for proper unit setup.</p>