

[Manuals.plus](#) /

> [xTool](#) /

> xTool P2 Honeycomb Working Panel 2.0 Instruction Manual for P2/P2S Laser Engravers

xTool P5010336

xTool P2 Honeycomb Working Panel 2.0 Instruction Manual

For xTool P2 and P2S Laser Engravers

INTRODUCTION

The xTool P2 Honeycomb Working Panel 2.0 is designed to enhance the performance of your xTool P2 and P2S laser engravers. This panel provides a stable and efficient surface for various cutting and engraving tasks, ensuring optimal results and improved material handling.

Key features include:

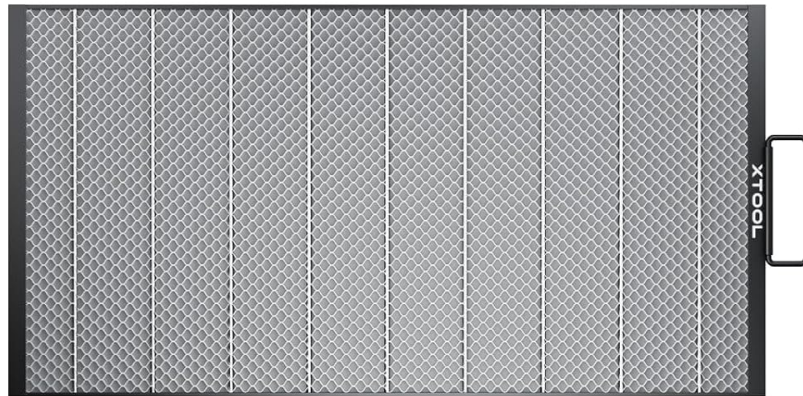
- **Precise Fit:** Engineered for 100% compatibility with xTool P2/P2S models.
- **Reduced Material Drops:** Minimizes instances of cut pieces falling through the work area.
- **Enhanced Airflow:** Improves smoke extraction and reduces back reflections for cleaner cuts and engravings.
- **Stable Work Surface:** Provides a flat and secure base for materials, aiding in consistent processing.

PACKAGE CONTENTS

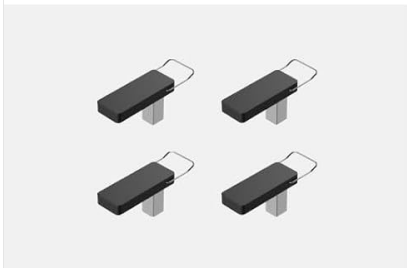
Verify that all items are present in your package:

- xTool P2 Honeycomb Panel 2.0
- Material Pins (x4)
- Cleaning Brush
- User Manual

List of items



xTool P2
Honeycomb panel 2.0



Material Pin*4



Cleaning Brush



User Manual

Image: The package includes the honeycomb panel, four material pins, a cleaning brush, and a user manual.

SETUP

Follow these steps to install the honeycomb working panel into your xTool P2 or P2S laser engraver:

1. Ensure your xTool P2/P2S laser engraver is powered off and disconnected from the power source.
2. Open the lid of your laser engraver.
3. Carefully remove any existing working surface or slats from the engraver bed.
4. Place the xTool P2 Honeycomb Working Panel 2.0 onto the engraver bed. Ensure it sits flat and is properly aligned within the work area. The panel is designed for a precise fit, measuring approximately 24.8 inches by 12.8 inches.
5. The panel features a handle for easy placement and removal.
6. You may use the included material pins to secure your material to the honeycomb surface during operation.

100% Fit with xTool P2



Image: The honeycomb panel fits precisely into the xTool P2/P2S laser engraver bed.

OPERATING

The honeycomb working panel optimizes your laser engraving and cutting processes:

- **Material Stability:** The flat surface and honeycomb structure provide a stable base, preventing small materials from shifting during operation.
- **Improved Cut Quality:** The open honeycomb design allows smoke and debris to be efficiently drawn downwards, reducing charring and back reflections on the underside of your material. This results in cleaner cuts and smoother edges.
- **Reduced Drops:** The honeycomb pattern is designed to minimize the chance of small cut pieces falling through, which can prevent burning and simplify cleanup.
- **Batch Processing:** The panel facilitates easy setup for batch engraving or cutting, allowing for consistent positioning of multiple items.

Make Processing Efficient



Before

- ✗ No Clean Surface
- ✗ No Smooth Edges
- ✗ Place Small Materials Carefully



After

- ✓ Clean Surface
- ✓ Smooth Edges
- ✓ Place Small Materials Freely

Image: Comparison of laser-cut snowflakes, demonstrating cleaner results with the honeycomb panel.

Fewer Drops in Cutting

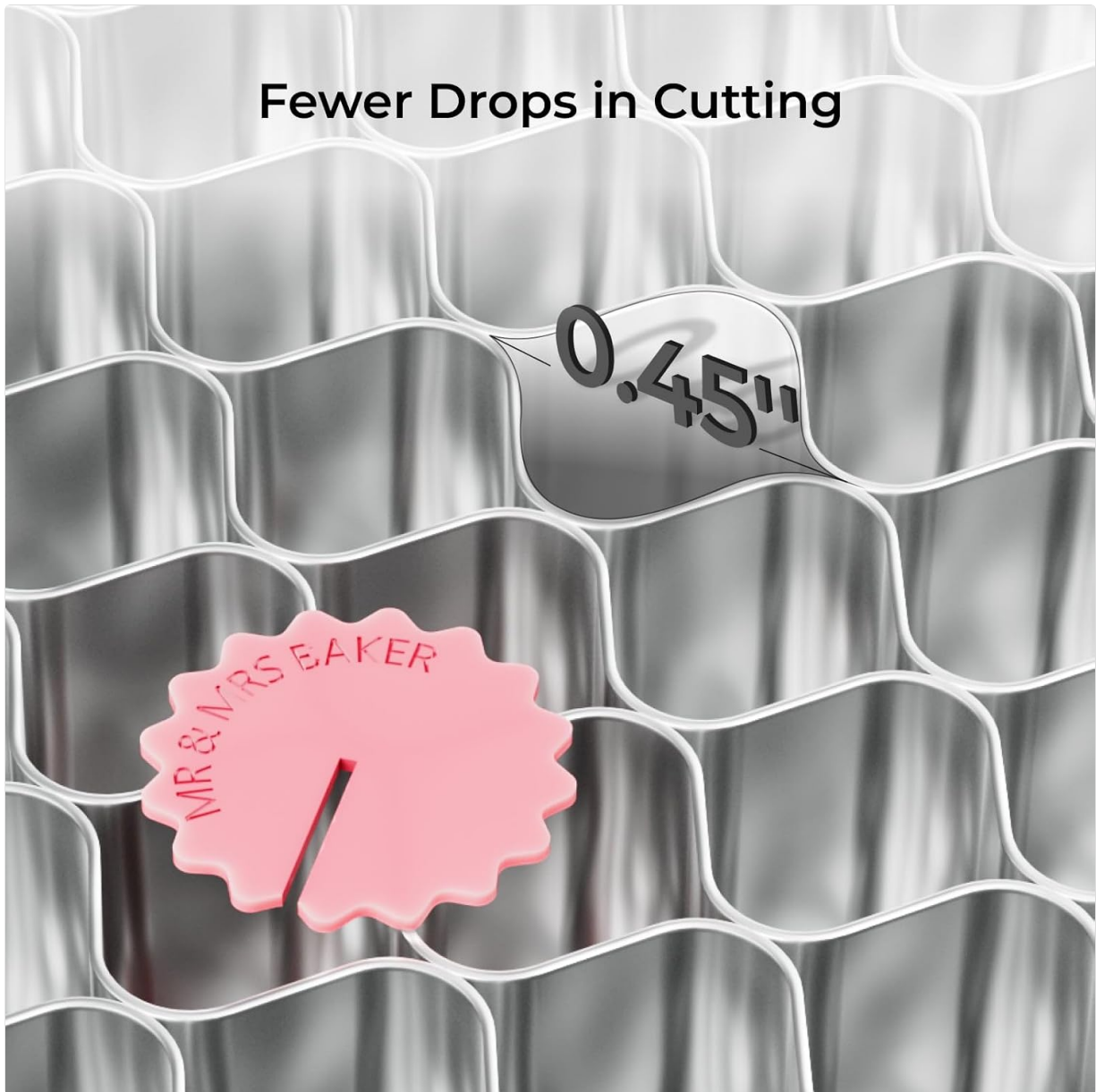


Image: The honeycomb structure helps prevent small cut pieces from falling through.

MAINTENANCE

Regular maintenance of your honeycomb working panel ensures its longevity and continued performance:

- **Cleaning:** Over time, debris and residue from laser processing can accumulate within the honeycomb cells. Use the provided cleaning brush to regularly clear out these obstructions. For stubborn residue, a soft brush and a mild cleaning solution (non-abrasive) can be used, followed by thorough drying.
- **Inspection:** Periodically inspect the panel for any signs of damage or deformation. While designed to be robust, extreme heat or impact can affect its flatness.
- **Storage:** When not in use, store the honeycomb panel in a clean, dry place to prevent dust accumulation and corrosion.

TROUBLESHOOTING

If you encounter issues while using the honeycomb working panel, consider the following:

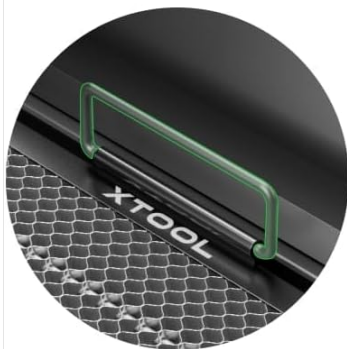
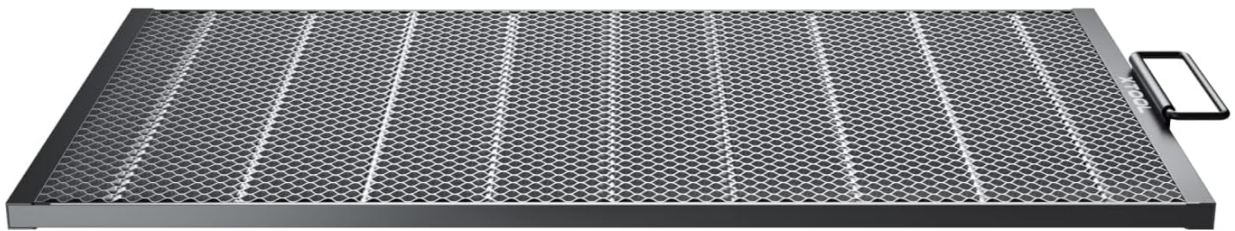
- **Material Not Flat:** Ensure the material is placed evenly on the honeycomb panel. Use the material pins to secure it if necessary. Uneven material can lead to inconsistent focus and poor cut/engrave quality.

- **Poor Cut/Engrave Quality:** Check if the honeycomb cells are clogged with debris. A dirty panel can impede airflow and cause smoke to linger, leading to charring or uneven results. Clean the panel as described in the Maintenance section.
- **Panel Movement:** Verify that the honeycomb panel is correctly seated within the laser engraver bed and not shifting during operation.

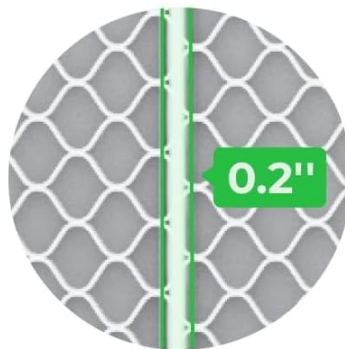
SPECIFICATIONS

Product Dimensions	28.35 x 15.35 x 2.36 inches
Item Model Number	P5010336
Item Weight	6.69 pounds
Compatibility	xTool P2, xTool P2S Laser Engravers
Manufacturer	Makeblock Co., Ltd.

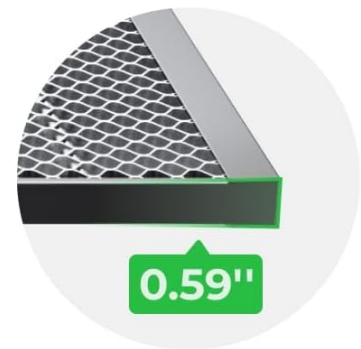
Quality-Assured and User-Friendly Design



Handle
Easy to Take Out



**0.2" Thickened
Steel Bar**
Robust and Durable



0.59" thickness
Less Prone to Deformation

Image: Design features of the honeycomb panel, including handle, thickened steel bar, and overall thickness.

WARRANTY INFORMATION

For detailed warranty information regarding the xTool P2 Honeycomb Working Panel 2.0, please refer to the official xTool website or the warranty card included with your product. Warranty terms and conditions may vary by region and purchase date.

SUPPORT

If you require assistance or have questions about your xTool P2 Honeycomb Working Panel 2.0, please utilize the following support channels:

- **Email Support:** Contact xTool customer service via email for inquiries.
- **Live Chat:** Access live chat support on the official xTool website for real-time assistance.
- **Phone Support:** Call the designated support number for direct communication.
- **Community Forums:** Join the official xTool Facebook group or other community forums for peer support and shared knowledge.