

ecozy IM-NS331A

ecozy Nugget Ice Maker Countertop IM-NS331A User Manual

Model: IM-NS331A

1. INTRODUCTION

This manual provides comprehensive instructions for the safe and efficient operation, maintenance, and troubleshooting of your ecozy Nugget Ice Maker Countertop, Model IM-NS331A. Please read this manual thoroughly before using the appliance and retain it for future reference.

2. IMPORTANT SAFETY INSTRUCTIONS

To reduce the risk of fire, electric shock, or injury when using your ice maker, follow these basic precautions:

- Read all instructions before use.
- Do not touch the evaporator or ice-making blades when the unit is in operation.
- Do not immerse the appliance, power cord, or plug in water or other liquids.
- Supervise children closely when the appliance is in use.
- Unplug the ice maker from the outlet when not in use or before cleaning.
- Do not operate any appliance with a damaged cord or plug, or after the appliance malfunctions or has been damaged in any manner.
- Use only potable water for ice production.
- Ensure the appliance is placed on a stable, level surface.
- Do not block ventilation openings.

3. PRODUCT OVERVIEW

The ecozy Nugget Ice Maker Countertop IM-NS331A is designed to produce soft, chewable cylindrical ice. Key features include an intuitive ErgoScreen control panel, a pull-out ice basket, and a self-cleaning function.

3.1 Components



Figure 1: Front view of the ecozy Nugget Ice Maker Countertop IM-NS331A. The image displays the compact, grey unit with a black control panel on top, a clear ice basket visible below, and a drip tray at the base.

- **ErgoScreen Control Panel:** Angled high-resolution touch screen for easy operation.
- **Ice Basket:** Pull-out design with 3 lbs storage capacity.
- **Water Reservoir:** Internal water tank for ice production.
- **Drip Tray:** Collects water to keep the countertop clean.
- **Drain Plugs:** Located at the back for water drainage.

3.2 Control Panel Functions

Versatile ErgoScreen

Perfect fit, effortless control, all at your fingertips



Figure 2: Close-up of the intuitive ErgoScreen control panel. The screen displays icons for "Ice Making", "Cleaning", "Ice Full", "Add Water", "Light", "Timer", and "Up/Down" buttons, along with a digital display.

- **Ice Making Indicator:** Illuminates when the unit is producing ice.
- **Cleaning Indicator:** Illuminates during the self-cleaning cycle.
- **Ice Full Indicator:** Alerts when the ice basket is full.
- **Add Water Indicator:** Alerts when the water reservoir needs refilling.
- **Light Button:** Activates the internal light to view ice production.
- **Timer Button:** Used to set the ice-making schedule.
- **Up/Down Buttons:** Adjust timer settings.

3.3 Ice Type

This ice maker produces soft, chewable cylindrical nugget ice, which is known for its ability to absorb

flavors and chill drinks effectively.



Figure 3: Comparison illustrating the characteristics of nugget ice (soft, chewable, quick cooling, absorbs flavor) versus bullet ice (hard, rigid, slow chilling, no flavor boost).

4. SETUP

4.1 Unpacking and Placement

- Remove all packaging materials and inspect the ice maker for any damage.
- Place the ice maker on a stable, level countertop away from direct sunlight and heat sources. Ensure adequate ventilation around the unit.
- Allow the unit to stand upright for at least 2 hours before plugging it in to allow refrigerants to settle.
- Install the drip tray at the base of the unit.

4.2 Initial Cleaning

Before first use, it is recommended to clean the ice maker:

1. Fill both the top water tank and the lower water tank (ice basket area) with clean, potable water up to the MAX fill line.
2. Add a small amount of lemon juice (e.g., 1 tablespoon) to the water for a thorough clean.
3. Press the "Cleaning" button on the ErgoScreen to start the self-cleaning cycle.
4. Once the cycle is complete (approximately 10 minutes), drain the water from the unit using the two drain plugs located at the back.
5. Rinse the unit by repeating the cleaning cycle with only clean water (no lemon juice) to remove any residue. Drain thoroughly.

5. OPERATING INSTRUCTIONS

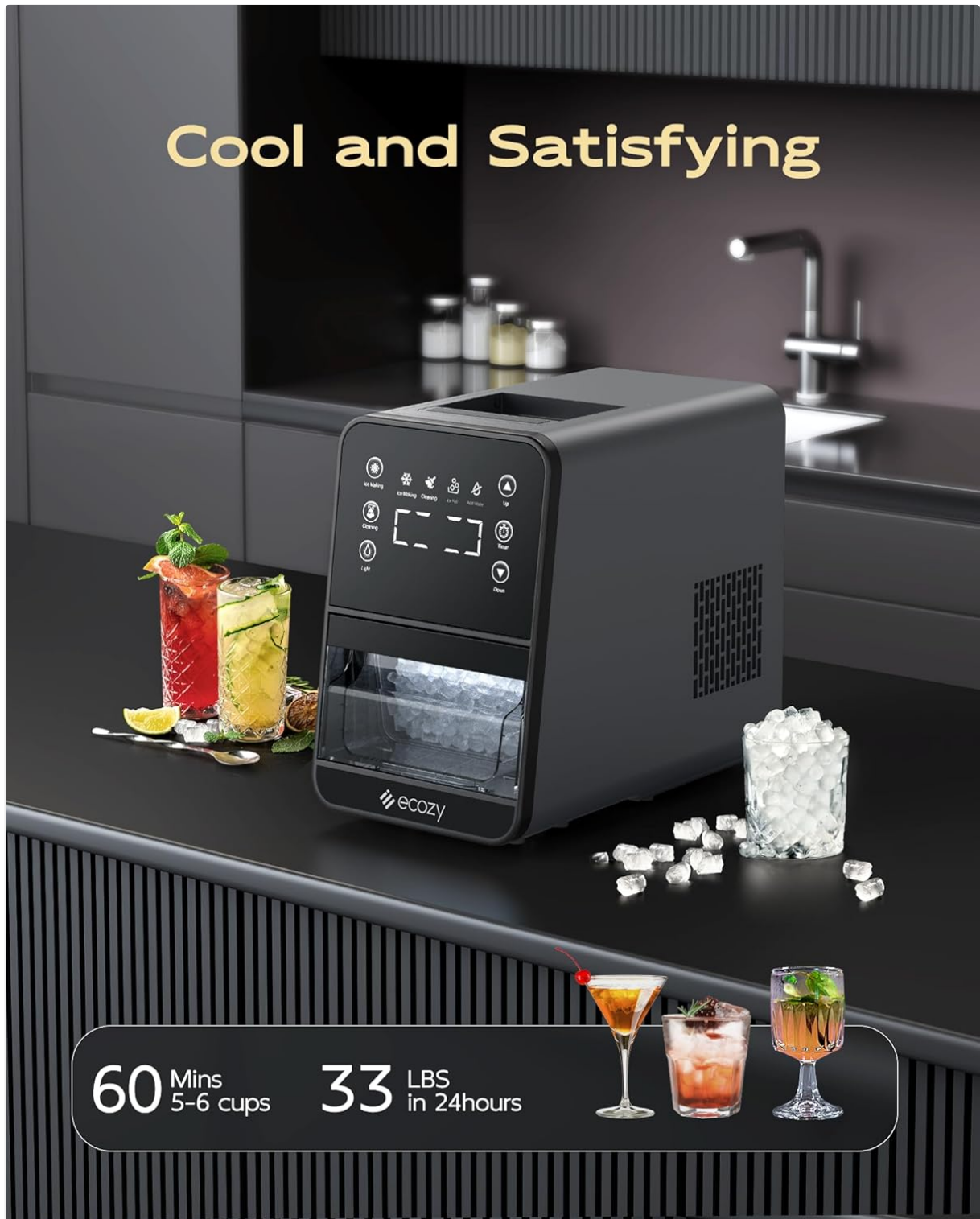
5.1 Adding Water

Open the top lid and fill the water reservoir with potable water up to the MAX fill line. The "Add Water" indicator will turn off once sufficient water is detected.

5.2 Starting Ice Production

Press the "Ice Making" button on the ErgoScreen. The "Ice Making" indicator will illuminate, and the unit will begin producing ice. The first batch of ice may take longer to produce.

Cool and Satisfying



60 Mins
5-6 cups

33 LBS
in 24hours

Figure 4: The ecozy ice maker actively producing ice, with ice nuggets visible in the pull-out basket. The image highlights the unit's capacity to produce 5-6 cups of ice in 60 minutes and up to 33 lbs in 24 hours.

5.3 Using the Timer Function

The ice maker features a 24-hour timer function to schedule ice production:

1. Press the "Timer" button. The digital display will show a flashing time.
2. Use the "Up" and "Down" buttons to set the desired delay time (in hours) before ice production begins.
3. Press the "Timer" button again to confirm the setting. The timer indicator will illuminate.

Note: This is a timer for scheduling ice production, not a clock displaying current time.

Scheduled Ice. Right on Time

Set the timer and enjoy ice
as soon as you get up



It's just a timer, not a clock!

Figure 5: A user interacting with the ice maker's timer function. The digital display shows a time, indicating the scheduling capability of the unit.

5.4 Retrieving Ice

When the "Ice Full" indicator illuminates, the ice basket is full. Gently pull out the drawer-style ice basket to access the ice. Use the provided ice scoop to retrieve ice.



Figure 6: Comparison illustrating the drawer-style ice basket of the ecozy ice maker, which allows for easy access and prevents ice piling, versus a traditional top-loading basket.

5.5 Internal Light

Press the "Light" button to illuminate the interior of the ice maker, allowing you to view the ice production process or check the ice level. The light will stay on for approximately 10 minutes or can be turned off by pressing the button again.

6. MAINTENANCE AND CLEANING

6.1 Regular Cleaning

Regular cleaning helps maintain ice quality and extends the life of your appliance. Use the self-cleaning function weekly or as needed.

Convenient Self-Cleaning Function


Prevent odors


Fresher ice


Save time



Fill both the upper and lower water tanks for self-cleaning

Figure 7: Diagram illustrating the self-cleaning process, showing water circulating between the upper and lower tanks. This function helps prevent odors and ensures fresh ice.

1. Ensure the unit is unplugged before manual cleaning.
2. Remove the ice basket and wash it with mild soap and warm water. Rinse thoroughly.
3. Wipe the interior and exterior surfaces of the ice maker with a soft cloth dampened with mild detergent.
4. For the self-cleaning cycle, refer to "4.2 Initial Cleaning" for detailed steps. Remember to fill both the top and bottom water tanks for a thorough clean.

6.2 Draining the Water

To drain residual water from the unit, locate the two drain plugs at the back of the ice maker. Place a container underneath and remove the plugs to allow water to drain completely. Replace the plugs securely

after draining.

6.3 Hard Water Considerations

Hard water can lead to mineral buildup (scaling) inside the ice maker, affecting performance and ice quality. Consider using filtered or pure water, especially in areas with high mineral content.

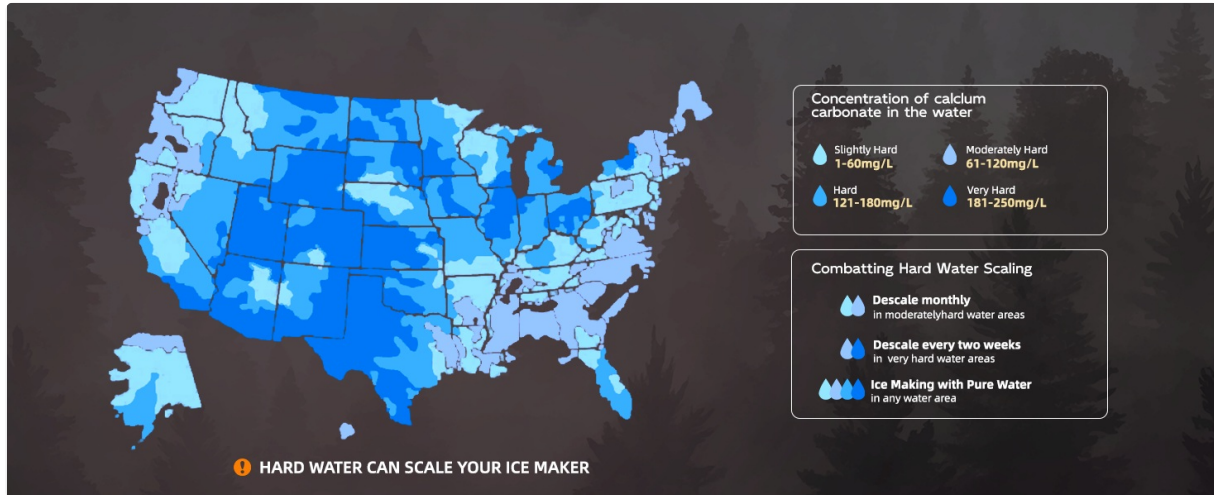


Figure 8: Information regarding hard water and its impact on ice makers. It advises on descaling frequency based on water hardness levels (Slightly Hard, Moderately Hard, Very Hard).

- **Descaling:** If you notice mineral buildup, descale the unit using a descaling solution or a mixture of water and vinegar. Follow the self-cleaning procedure with the descaling solution, then rinse thoroughly with clean water.
- **Frequency:** Descale monthly in moderately/hard water areas, and every two weeks in very hard water areas.

7. TROUBLESHOOTING

Before contacting customer support, please refer to the following troubleshooting guide:

Problem	Possible Cause	Solution
Ice maker not producing ice.	No water in reservoir; "Add Water" indicator is on. Unit is unplugged or power outage. Ambient temperature is too high.	Fill water reservoir. Ensure unit is plugged in and power is supplied. Operate in a cooler environment.
"Ice Full" indicator is on, but basket is not full.	Ice sensor is blocked or dirty. Ice is piled up unevenly.	Clear any obstructions from the ice sensor. Redistribute ice in the basket or remove some ice.
Ice melts quickly or freezes together.	Ambient temperature is too high. Ice is not being transferred to a freezer.	Ensure the unit is in a cool environment. Transfer freshly made ice to a freezer for long-term storage. The ice maker is not a freezer.
Unit is making loud or unusual noises (e.g., knocking, grinding).	Internal components may be obstructed or malfunctioning. Air in the system.	Unplug the unit and allow it to rest for 30 minutes, then restart. If the noise persists, contact customer support. Ensure the unit is on a level surface.
Self-cleaning function not working effectively.	Insufficient water in tanks. Mineral buildup.	Ensure both top and bottom water tanks are filled during the cleaning cycle. Perform descaling if hard water is suspected.

8. SPECIFICATIONS

Feature	Detail
Brand	ecozy
Model Name	IM-NS331A
Product Dimensions (D x W x H)	15.16" x 8.86" x 13.5"
Ice Production Capacity	Up to 33 lbs per 24 hours
Ice Storage Capacity	3 lbs
Voltage	115 Volts
Refrigerant	R600a
Material	Plastic
Item Weight	23.1 pounds
Installation Type	Countertop
Included Components	Ice Scoop, Drip Tray

Perfect Size for Countertop



Figure 9: Dimensions of the ecozy Nugget Ice Maker, showing a depth of 15.16 inches, width of 8.86 inches, and height of 13.5 inches, suitable for countertop placement.

9. WARRANTY AND CUSTOMER SUPPORT

For warranty information or technical assistance, please contact ecozy customer support. Refer to the product packaging or the official ecozy website for the most current contact details.

Website: [ecozy Official Store](#)