

VEVOR MT-30

VEVOR MT-30 Manual Round Bottle Labeling Machine User Manual

Model: MT-30

1. INTRODUCTION

This user manual provides comprehensive instructions for the safe and efficient operation, setup, and maintenance of your VEVOR MT-30 Manual Round Bottle Labeling Machine. Please read this manual thoroughly before using the machine to ensure proper function and to prevent damage or injury. Keep this manual for future reference.

The VEVOR MT-30 is designed for applying labels to round bottles, offering a manual, non-electric solution for small to medium-scale labeling needs. It is engineered for quick and precise label application, minimizing bubbles and ensuring a professional finish.

2. SAFETY INSTRUCTIONS

Always follow basic safety precautions when operating any machinery. Failure to do so may result in personal injury or damage to the equipment.

- Read and understand all instructions before operation.
- Ensure the machine is placed on a stable, level surface to prevent tipping.
- Keep hands and loose clothing away from moving parts during operation.
- Do not attempt to modify the machine. Use only original VEVOR parts for replacement.
- Keep the work area clean and well-lit.
- This machine is designed for applying labels to round bottles only. Do not use it for other purposes.
- Store the machine in a dry, safe place when not in use.

3. PRODUCT OVERVIEW

The VEVOR MT-30 Manual Round Bottle Labeling Machine is constructed from durable A3 and 201 stainless steel, featuring SUS201+PC rollers and a POM label disc. It is designed for efficient and bubble-free label application.

3.1 Key Features

- **Efficient Labeling:** Capable of labeling 15 to 20 bottles per minute, significantly reducing manual labeling time.
- **Bubble-Free Application:** Equipped with a round pressure bar and rubber roller system to ensure smooth, tight, and bubble-free label adhesion.
- **Adjustable Versatility:** Easily adjustable to accommodate round bottles with diameters ranging from 20 mm (0.78 inches) to 120 mm (4.72 inches).
- **Durable Construction:** Made from high-quality A3 and 201 stainless steel, ensuring longevity and resistance to rust.
- **User-Friendly Design:** Features an intuitive manual adjustment system for quick label changes and compatibility with various label sizes.
- **Label Compatibility:** Supports both transparent and adhesive labels.

3.2 Package Contents

- 1 x VEVOR MT-30 Manual Round Bottle Labeling Machine
- Necessary assembly tools (e.g., Allen wrenches)
- User Manual

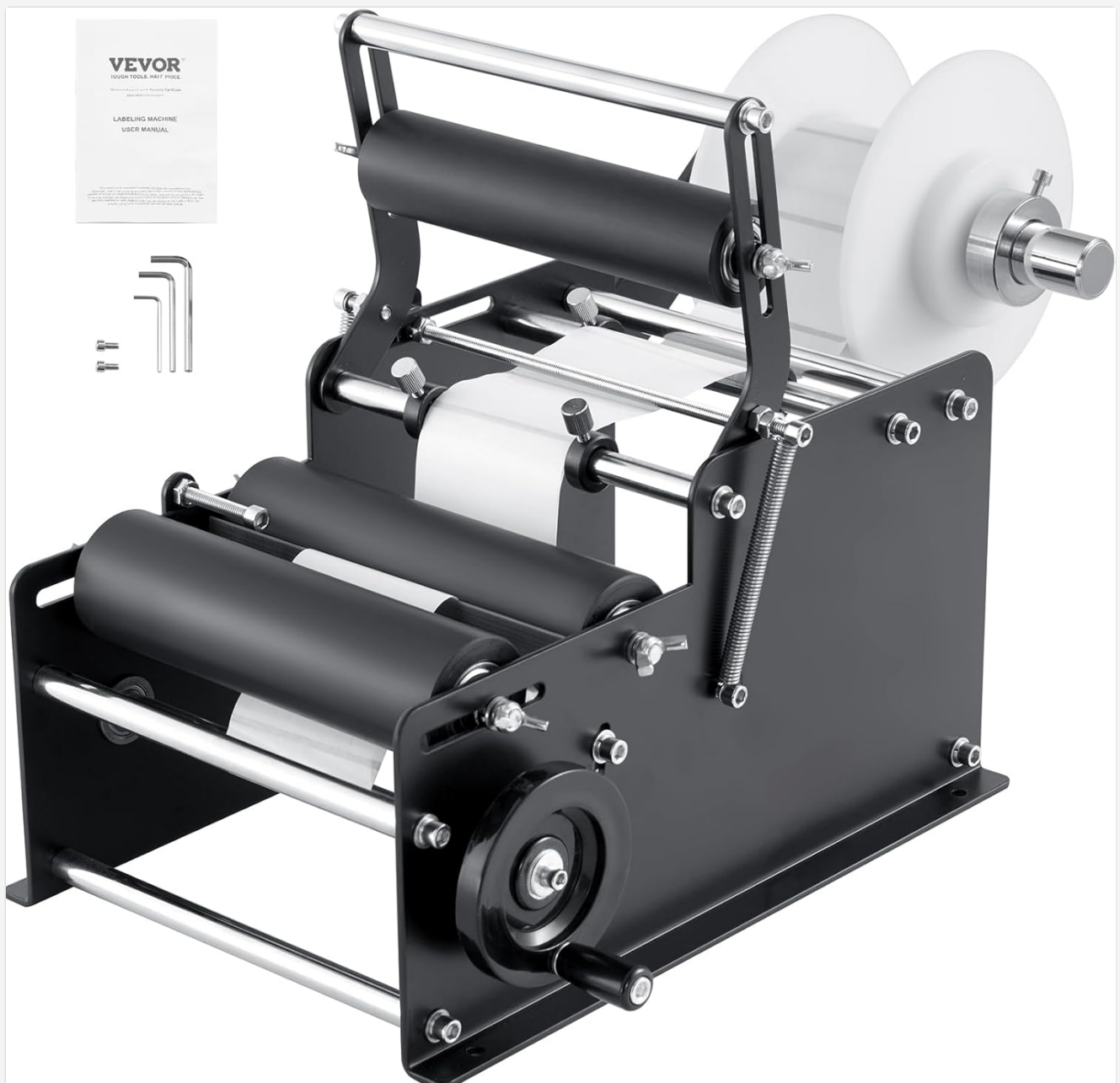


Figure 1: VEVOR MT-30 Manual Round Bottle Labeling Machine and included accessories.

4. SETUP AND ASSEMBLY

The VEVOR MT-30 machine requires minimal assembly. Follow these steps to set up your labeling machine:

1. **Unpack Components:** Carefully remove all parts from the packaging. Verify that all components listed in Section 3.2 are present.
2. **Secure Base:** Place the main base of the machine on a stable, flat workbench.
3. **Install Label Roll Holder:** Attach the label roll holder assembly to the designated slots on the machine's frame. Ensure it is securely fastened with the provided screws or knobs.
4. **Install Rollers and Pressure Bar:** Position the rubber rollers and the round bottle press bar into their respective mounts. Ensure they can move freely and are properly aligned.
5. **Adjustments:** Familiarize yourself with the adjustment screws for label width, length, and bottle diameter. These will be fine-tuned during operation.



Figure 2: Fully assembled VEVOR MT-30 machine, ready for label loading.

5. OPERATING INSTRUCTIONS

Follow these steps for effective and precise label application:

1. Load Label Roll:

- Place your roll of labels onto the label disc holder. Ensure the label roll's inner diameter is at least 25 mm (0.98 inches) and the outer diameter does not exceed 180 mm (7.09 inches).
- Thread the leading edge of the label strip through the guide rollers and under the round bottle press bar, ensuring it is aligned straight.

VERSATILE FOR VARIOUS LABELS

Meet diverse needs



Transparent
Label



Adhesive
Label

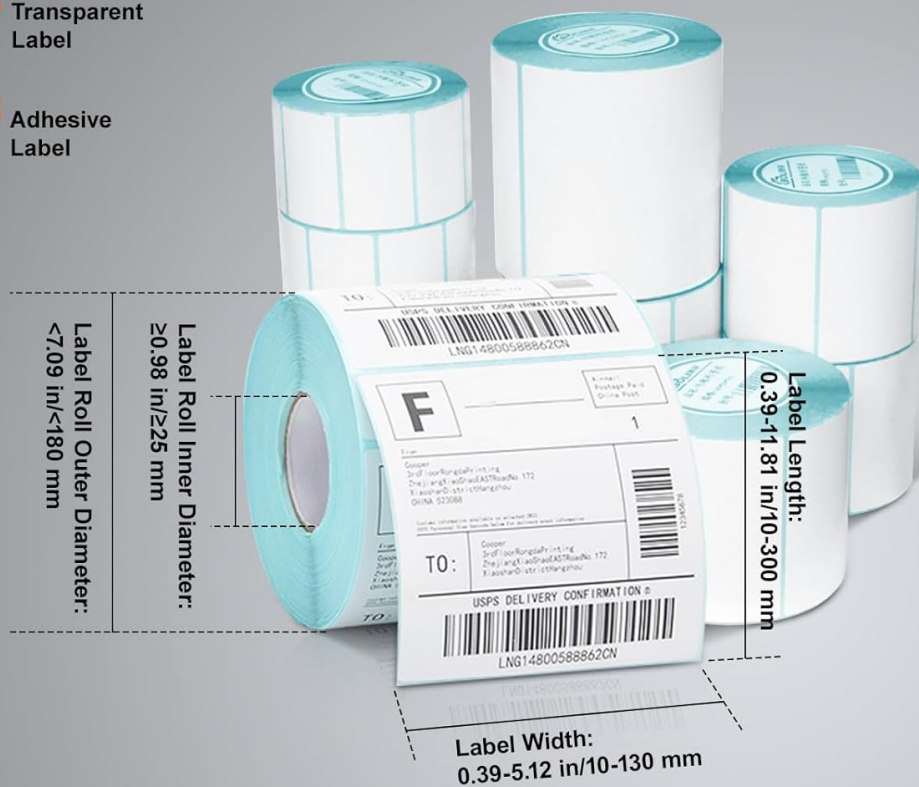


Figure 3: Label roll specifications and compatibility with various label types.

2. Adjust Label Dimensions:

- Use the screw adjustments to set the label width (0.39-5.12 inches / 10-130 mm) and label length (0.39-11.81 inches / 10-300 mm) according to your label specifications.
- These adjustments ensure the label is dispensed correctly and precisely.

UPGRADED SCREW ADJUSTMENT

Easier label replacement



Quick Label
Changing



Time and
Effort Saving



Fit More
Label Sizes



Figure 4: Detailed view of the screw adjustment for label dimensions.

3. Adjust for Bottle Size:

- Place a bottle onto the machine's bottle support.
- Adjust the forward and backward rollers to securely hold the bottle and ensure the label will be applied centrally and smoothly. The machine accommodates round bottles with diameters from 20 mm (0.78 inches) to 120 mm (4.72 inches).

ADJUSTABLE ROLLER

Fit various bottle sizes



Figure 5: Adjusting rollers to fit different bottle diameters.

4. Apply Label:

- With the bottle in place and adjustments made, turn the hand crank. This action will rotate the bottle and dispense the label, applying it smoothly and evenly.
- The unique round bottle press bar ensures tight, bubble-free labeling.

UNIQUE ROUND BOTTLE PRESS BAR

Tighter labeling, bubble-free



Precise Labeling



Neat and Beautiful



Reduce Waste



Figure 6: Applying a label using the machine's hand crank and press bar.

5. **Remove Labeled Bottle:** Once the label is applied, carefully remove the bottle and repeat the process for the next one.

6. MAINTENANCE

Regular maintenance ensures the longevity and optimal performance of your VEVOR MT-30 labeling machine.

- **Cleaning:** After each use, wipe down the machine with a soft, dry cloth to remove any dust, label residue, or adhesive. For stubborn residue, use a mild, non-abrasive cleaner.
- **Lubrication:** Periodically apply a small amount of machine oil to moving parts, such as the roller axles and adjustment screws, to ensure smooth operation.
- **Inspection:** Regularly inspect all screws, bolts, and moving parts for tightness and wear. Tighten any loose fasteners. Replace any worn or damaged components immediately.
- **Storage:** When not in use, store the machine in a clean, dry environment, protected from dust and extreme temperatures.

7. TROUBLESHOOTING

This section addresses common issues you might encounter with your labeling machine.

Problem	Possible Cause	Solution
Labels are crooked or misaligned.	<ul style="list-style-type: none">◦ Bottle not seated correctly.◦ Label roll not aligned straight.◦ Roller adjustments are uneven.◦ Bottle shape inconsistencies (e.g., tapered bottles).	<ul style="list-style-type: none">◦ Ensure the bottle is firmly and squarely placed against the supports.◦ Re-thread the label roll, ensuring it feeds straight.◦ Adjust the forward/backward rollers evenly to match the bottle diameter.◦ This machine is designed for perfectly round bottles. Tapered or irregular bottles may not label perfectly.
Labels have bubbles or wrinkles.	<ul style="list-style-type: none">◦ Insufficient pressure from the press bar.◦ Label material or adhesive quality.◦ Speed of application.	<ul style="list-style-type: none">◦ Ensure the round bottle press bar is properly engaged and applying even pressure.◦ Test with different label types if issues persist.◦ Apply labels at a consistent, moderate speed.
Labels are not dispensing.	<ul style="list-style-type: none">◦ Label roll jammed or improperly loaded.◦ Adjustment screws too tight or too loose.◦ Adhesive residue on rollers.	<ul style="list-style-type: none">◦ Check label path for obstructions and re-load the label roll.◦ Verify label width and length adjustments are correct and not binding the label.◦ Clean rollers thoroughly to remove any adhesive buildup.
Machine feels stiff or difficult to operate.	<ul style="list-style-type: none">◦ Lack of lubrication.◦ Tightened components.	<ul style="list-style-type: none">◦ Apply machine oil to moving parts as per maintenance instructions.◦ Check for any over-tightened screws or adjustments.

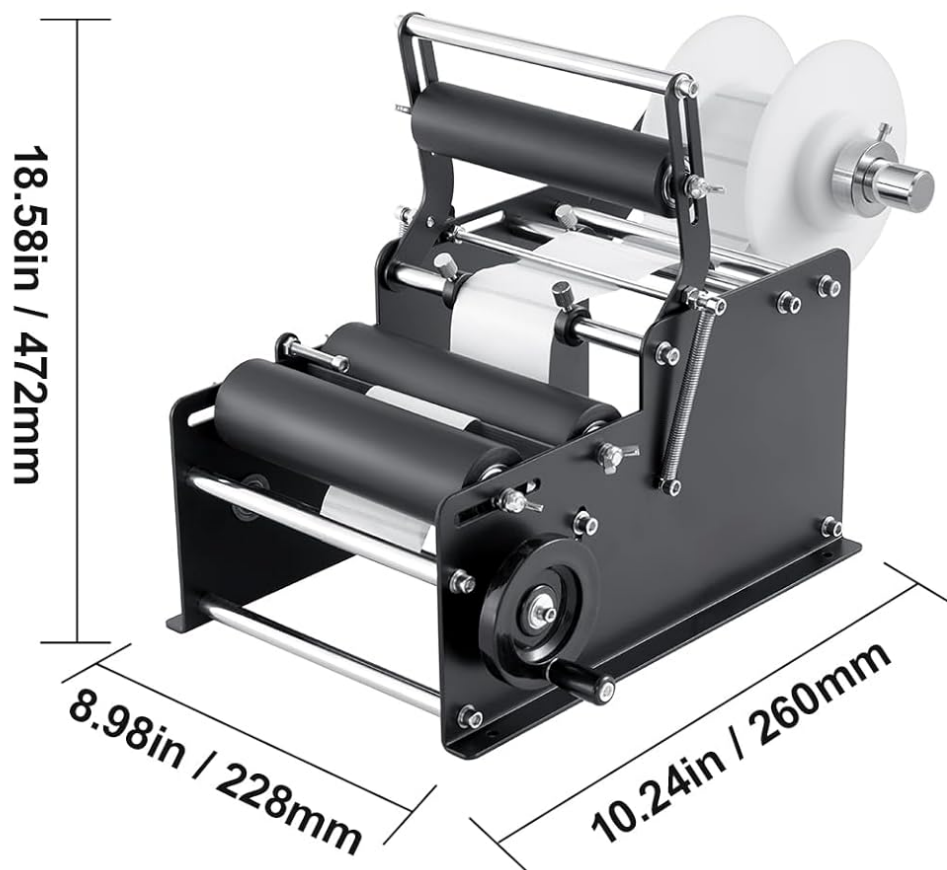
8. SPECIFICATIONS

Detailed technical specifications for the VEVOR MT-30 Manual Round Bottle Labeling Machine:

Parameter	Value
Model Number	MT-30
Operation Type	Manual, Non-Electric
Product Weight	6.53 kg (14.4 lbs)
Label Types Supported	Transparent, Adhesive Labels
Adjustment Type	Screw Adjustment
Main Material	A3 + 201 Stainless Steel
Roller Material	SUS201 + PC
Label Disc Material	POM

Parameter	Value
Press Bar Material	A3 Coated + PC (Roller)
Product Dimensions (L x W x H)	472 x 228 x 260 mm (18.58 x 8.98 x 10.24 inches)
Applicable Label Width	10-130 mm (0.39-5.12 inches)
Applicable Label Length	10-300 mm (0.39-11.81 inches)
Label Roll Inner Diameter	≥ 25 mm (≥ 0.98 inches)
Applicable Round Bottle Diameter	20-120 mm (0.78-4.72 inches)
Labeling Speed	15-20 pieces/min (approximate)

VEVOR
TOUGH TOOLS, HALF PRICE



Item Model Number:	MT-30
Electric or Not:	Non-Electric
Product Weight:	14.4 lbs/6.53 kg
Label Types:	Transparent Label, Adhesive Label
Adjustment Type:	Screw
Main Material:	A3+201
Roller Material:	SUS201+PC
Label Disc Material:	POM
Press Bar Material:	A3-Coated + PC (Roller)
Product Size:	18.58 x 8.98 x 10.24 in/472 x 228 x 260 mm



Figure 7: Overview of product dimensions and key specifications.

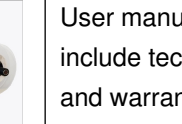
9. WARRANTY AND SUPPORT

Information regarding product warranty and customer support was not available in the provided data. For warranty details, technical assistance, or to inquire about replacement parts, please contact VEVOR customer service directly or visit their official website. Ensure you have your product model number (MT-30) and purchase information ready when contacting support.

You can often find support information on the official VEVOR website:www.vevor.com

© 2025 VEVOR. All rights reserved.
This manual is subject to change without notice.

Related Documents - MT-30

<p>Model MT-50</p> <p>Semi-automatic Round Bottle Labeling Machine</p> 	<p>MT-50 Semi-Automatic Round Bottle Labeling Machine User Manual</p> <p>User manual for the MT-50 Semi-Automatic Round Bottle Labeling Machine by VEVOR. Details include technical specifications, operation instructions, maintenance procedures, common faults, and warranty information.</p>
<p>VEVOR Upgrade The Home Creator Way</p> <p>LABELING MACHINE USER MANUAL</p>	<p>VEVOR Labeling Machine User Manual - MT-50 Series Operation and Maintenance Guide</p> <p>Comprehensive user manual for VEVOR MT-50 series labeling machines. Includes assembly, operation, maintenance, and troubleshooting instructions for models MT-50Alu-V1, MT-50Alu-V2, MT-50SS-V2, and MT-50SS-V3.</p>
<p>VEVOR® TOUGH TOOLS, HALF PRICE</p> <p>Technical Support and E-Warranty Certificate www.vevor.com/support</p> <p>LABELING MACHINE USER MANUAL</p> <p><small>Please refer to the instruction to operate the tools with responsibility. The product is designed for professional use only. It is not intended for household or recreational use. The manufacturer shall not be responsible for any damage caused by misuse or abuse of the product. The product is designed for professional use only. It is not intended for household or recreational use. The manufacturer shall not be responsible for any damage caused by misuse or abuse of the product.</small></p>	<p>VEVOR Labeling Machine User Manual - MT-50 Series</p> <p>Comprehensive user manual for the VEVOR MT-50 series labeling machines, covering operation, maintenance, troubleshooting, and specifications. Includes safety guidelines and model details.</p>



User manual for the VEVOR Label Dispenser, including operating instructions, safety guidelines, maintenance, troubleshooting, and model specifications for LDW-20-V1, LDW-20-V2, and LDW-20-V3.



Detailed specifications for VEVOR Mill Power Table Feed labels, covering material requirements, label design, silk screen printing processes, quality control, and testing methods for models AL-260, AL-310, and AL-450.

