

[Manuals.plus](#) /

› [RK ROYAL KLUDGE](#) /

› RK ROYAL KLUDGE N80 Low Profile Mechanical Keyboard User Manual

RK ROYAL KLUDGE N80

RK ROYAL KLUDGE N80 Low Profile Mechanical Keyboard User Manual

Model: N80

Brand: RK ROYAL KLUDGE

1. PRODUCT OVERVIEW

The RK ROYAL KLUDGE N80 is a versatile 75% layout low-profile mechanical keyboard designed for both gaming and office use. It features a smart display screen and a multi-functional knob, offering intuitive control and customization. The keyboard supports tri-mode connectivity, including 2.4GHz wireless, Bluetooth 5.0, and USB-C wired connections, ensuring broad compatibility and flexibility.

Key features include low-profile tactile brown switches for faster actuation and a comfortable typing experience, a top-mounted design for enhanced stability, and a heavy-duty base to prevent wobbling. The keyboard also incorporates a triple sound-absorbing layer to minimize hollow sounds and noise, providing a smooth and quiet operation.



Image: The RK ROYAL KLUDGE N80 keyboard, showcasing its compact 75% layout, smart display screen, and multi-color keycaps.

2. WHAT'S IN THE BOX

Upon unboxing your RK ROYAL KLUDGE N80 keyboard, please verify that all the following items are included:

- 1x RK N80 Keyboard
- 1x 2-in-1 USB-C Cable
- 1x 2-in-1 Keycap & Switch Puller
- 4x Backup Switches
- 1x Disassembling Tool
- 1x Dust Cover
- 1x User Manual (Printed)



Image: A visual representation of the RK N80 keyboard and its included accessories: USB-C cable, keycap/switch puller, backup switches, disassembling tool, dust cover, and user manual.

3. SETUP GUIDE

3.1 Charging the Keyboard

Before initial use, it is recommended to fully charge the keyboard. Connect the provided USB-C cable to the keyboard's Type-C charging port and the other end to a USB power source (e.g., computer USB port, wall adapter). The smart display screen will indicate the charging status.

Massive Battery, Extended Use



Capacity
3750mAh



RGB Backlit On
25hrs



RGB Backlit Off
115hrs



Image: The RK N80 keyboard positioned next to an older computer, illustrating its 3750mAh battery capacity and estimated usage times (25 hours with RGB on, 115 hours with RGB off).

3.2 Connectivity Modes

The RK N80 keyboard offers three connectivity options:

1. 2.4GHz Wireless Mode:

Insert the 2.4GHz USB dongle into an available USB port on your device. The keyboard will automatically connect. This mode provides a stable and low-latency connection.

2. Bluetooth 5.0 Mode:

Turn on the keyboard's Bluetooth mode. On your device, search for Bluetooth devices and select "RK N80" to pair. The keyboard supports stable Bluetooth 5.0 for seamless wireless operation.

3. USB-C Wired Mode:

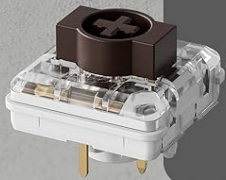
Connect the keyboard directly to your device using the provided USB-C cable. This mode offers a direct, reliable connection and simultaneously charges the keyboard.



Image: A visual representation of the keyboard's tri-mode connectivity options: 2.4GHz wireless, Bluetooth 5.0, and USB-C wired, shown with a laptop and tablet.

RK Low-Profile Mechanical Switches

Lower Height, Faster Actuation

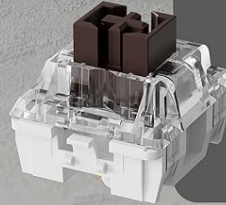


Low Profile

$1.5 \pm 0.4 \text{mm}$ Pre Travel

$3.2 \pm 0.4 \text{mm}$ Total Travel

$45 \pm 10 \text{gf}$ Operating Force



Standard Profile

$2 \pm 0.4 \text{mm}$ Pre Travel

$4 \pm 0.4 \text{mm}$ Total Travel

$40 \pm 5 \text{gf}$ Operating Force

Image: Close-up view of the keyboard's side, highlighting the Type-C charging port, Type-C hub, 2.4G dongle socket with magnetic attachment, and adjustable 2-level feet.

4. OPERATING INSTRUCTIONS

4.1 Smart Display Screen & Knob Control

The RK N80 features a smart display screen and a multi-functional knob for enhanced control:

- **Display Information:** The screen can show custom GIFs, current date and time, active connection mode (2.4G, BT1, BT2, BT3, USB), WIN/MAC layout status, and battery level.
- **Knob Functionality:**
 - **Press Knob:** Enters the screen control mode, allowing navigation through various display options (Home, Clock, GIF Image Display, Connection Mode, Light Control, Layout, Volume).
 - **Rotate Knob:** Adjusts volume by default. In screen control mode, it navigates through options or adjusts selected settings like backlight brightness/speed and RGB modes/colors.



Image: A detailed view of the smart display screen and knob, illustrating the various functions accessible by pressing the knob, including home screen, GIF display, connection modes, light control, layout, and volume.

4.2 RGB Backlight Control

The keyboard's RGB backlighting can be controlled using function key combinations or via the knob:

- **Fn + \|**: Switch Backlight Mode
- **Fn + <**: Switch Backlight Color
- **Fn + ↑ / ↓**: Adjust Backlight Brightness
- **Fn + ← / →**: Adjust Breathing Speed

Note: Backlight settings can also be adjusted through the knob in screen control mode.



Image: The keyboard with RGB lighting, showing the key combinations for backlight mode, color, brightness, and breathing speed adjustments.

4.3 Software Support

For advanced customization, the RK N80 supports dedicated software. This software allows you to:

- **Redefine Keys:** Customize key assignments and create macros.
- **GIF Image Display Setting:** Upload and manage custom GIFs for the smart display screen.
- **Edit Macro:** Create and edit complex macro sequences for enhanced productivity or gaming.

Please refer to the official RK ROYAL KLUDGE website for software download and detailed instructions.



Image: Screenshots of the keyboard's software interface, demonstrating options for key redefinition, GIF image display settings, and macro editing.

5. MAINTENANCE

Proper maintenance ensures the longevity and optimal performance of your RK ROYAL KLUDGE N80 keyboard:

- **Cleaning:** Use a soft, dry cloth to wipe the keyboard surface. For deeper cleaning, use a can of compressed air to remove dust and debris from between keycaps. For stubborn stains, a slightly damp cloth with mild soap can be used, ensuring no liquid enters the keyboard.
- **Keycap and Switch Replacement:** Use the provided 2-in-1 keycap & switch puller to safely remove keycaps and

switches. When replacing switches, ensure proper alignment before gently pressing them into place.

- **Storage:** When not in use, store the keyboard in a cool, dry place. Use the provided dust cover to protect it from dust accumulation.
- **Avoid Liquids:** Keep liquids away from the keyboard to prevent damage to internal components.

6. TROUBLESHOOTING

If you encounter issues with your RK ROYAL KLUDGE N80 keyboard, refer to the following common solutions:

Issue	Possible Cause	Solution
Keyboard not connecting wirelessly (2.4GHz/Bluetooth)	Low battery, incorrect mode, interference, pairing issue.	Ensure keyboard is charged. Switch to the correct wireless mode (2.4G or BT). Re-pair Bluetooth connection. Move closer to the receiver/device.
Keys not responding or double-typing	Dust/debris under keycap/switch, faulty switch.	Clean under keycaps with compressed air. If a switch is faulty, replace it using the provided backup switches and puller.
Smart display screen not working	Software glitch, power issue.	Restart the keyboard. Ensure sufficient battery. Check software settings for display options.
RGB backlighting not functioning	Backlight turned off, low battery, software setting.	Press Fn + \ to cycle modes or Fn + ↑ to increase brightness. Charge the keyboard. Check software settings.
Keyboard wobbles during typing	Uneven surface, issue with keyboard base.	Ensure the surface is flat. The keyboard is designed with a heavy-duty base to minimize wobbling. If persistent, check the adjustable feet.

7. SPECIFICATIONS

Feature	Detail
Model Number	N80
Dimensions (L x W x H)	12.68 x 5.31 x 0.99 inches (32.2 x 13.5 x 2.5 cm)
Item Weight	2.31 pounds (1.05 kg)
Connectivity Technology	Bluetooth 5.0, 2.4GHz RF Wireless, USB-C Wired
Keyboard Type	Mechanical Keyboard with Low Profile Switches
Switch Type	Low Profile Brown Tactile Switches
Switch Operating Force	45 ± 10gf
Switch Pre Travel	1.5 ± 0.4mm
Switch Total Travel	3.2 ± 0.4mm

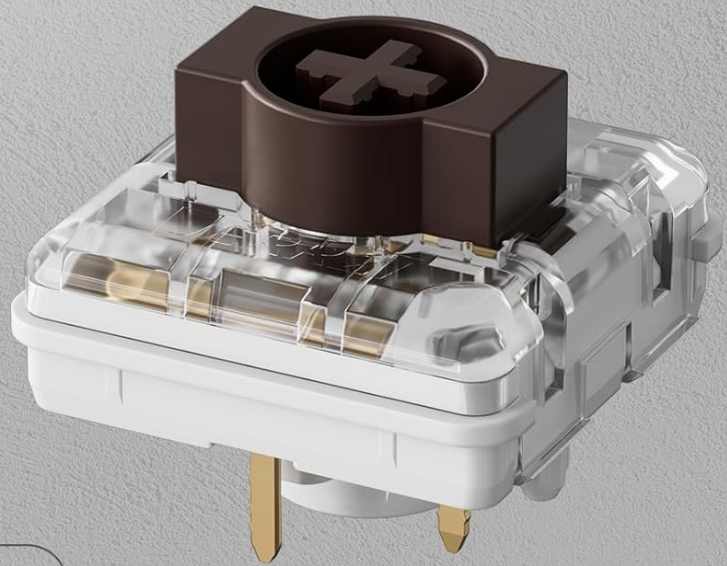
Feature	Detail
Switch Click Lifespan	50 Million
Battery Type	Lithium Polymer
Battery Capacity	3750mAh
Backlighting	RGB
Compatible Devices	Laptop, PC
Special Features	Low-Profile Key, Portable, Programmable Keys, Rechargeable, Volume Roller, Smart Display Screen



Image: A diagram illustrating the slim profile of the RK N80 keyboard, comparing the height of low-profile switches (12mm) to standard profile switches (18mm), and showing the overall keyboard thickness (27mm/1.1in).

Low-Profile Brown Tactile Switches

Lower Height, Faster Actuation



45±10gf Operating force

1.5±0.4mm Pre Travel

3.2±0.4mm Total Travel

50M Click Lifespan

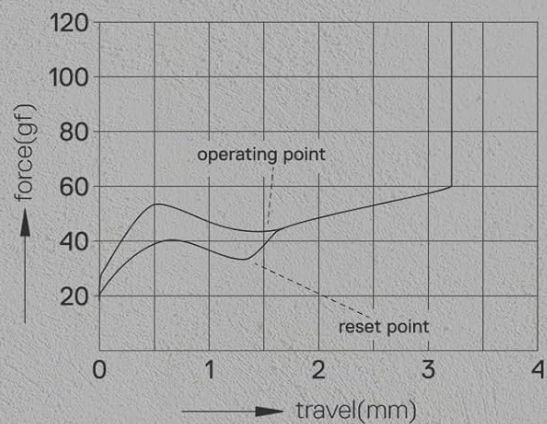


Image: A close-up view of the low-profile brown tactile switch, detailing its characteristics such as soft tactile feel, quick response, quiet typing, pre-lubed status, and key specifications like operating force, pre-travel, total travel, and click lifespan.

8. WARRANTY AND SUPPORT

For detailed warranty information and customer support, please refer to the official RK ROYAL KLUDGE resources:

- **User Manual (PDF):** For a comprehensive guide, you can download the official PDF user manual from [here](#).
- **Brand Store:** Visit the official RK ROYAL KLUDGE store on Amazon for product information, FAQs, and additional support: [RK ROYAL KLUDGE Store](#).

For technical assistance or warranty claims, please contact RK ROYAL KLUDGE customer service through their official channels.

