

## Edifier G200

# Edifier G200 Magnetic Bluetooth Speaker User Manual

Model: G200 | Brand: Edifier

## INTRODUCTION

The Edifier G200 is a compact and versatile magnetic Bluetooth speaker designed to enhance your audio experience on the go. Featuring a powerful 5W output, vibrant RGB lighting, and a strong magnetic base, it seamlessly integrates with your smartphone as a portable stand or attaches to various metal surfaces. This manual provides comprehensive instructions for setting up, operating, and maintaining your G200 speaker.



Figure 1: Edifier G200 Magnetic Bluetooth Speaker

## WHAT'S IN THE BOX

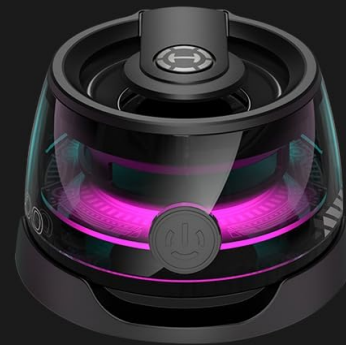
Please check the package contents to ensure all items are present:

- Edifier G200 Speaker
- Type-C Charging Cable
- Start Guide (User Manual)
- Lanyard

# WHAT'S IN THE BOX



Gift Box



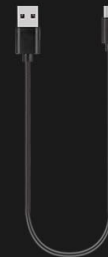
Edifier G200



Start Guide



Lanyard



Type-C Cable

Figure 2: Package Contents

## SETUP

### 1. Charging the Speaker

Before first use, fully charge the Edifier G200 speaker. Connect the provided Type-C charging cable to the charging port on the speaker and the other end to a USB power adapter (not included).

- The RGB light will indicate charging status.
- A full charge provides approximately 7 hours of playtime at 50% volume.

### 2. Bluetooth Pairing

Follow these steps to pair your G200 speaker with a Bluetooth-enabled device:

1. **Power On:** Press and hold the Power button for 3 seconds to turn on the speaker. The RGB light will flash, indicating it's in pairing mode.
2. **Activate Bluetooth:** On your device (smartphone, tablet, laptop), enable Bluetooth.
3. **Select Device:** Search for "Edifier G200" in the list of available Bluetooth devices and select it to connect.

4. **Confirmation:** Once successfully paired, the speaker will emit a confirmation tone, and the RGB light will change to a steady color.

For a visual guide on setup, please refer to the video below:

Your browser does not support the video tag.

Video 1: How to Use Setup Hecate Edifier G200 Wireless Speaker. This video demonstrates the unboxing, design, and setup process for the Edifier G200 speaker, including power on/off and Bluetooth pairing.

## OPERATING INSTRUCTIONS

### Power and Playback Control

The Edifier G200 features a single multi-function button for easy control:

- **Power On:** Press and hold for 3 seconds.
- **Power Off:** Press and hold for 5 seconds.
- **Play/Pause:** Single press (while music is playing).
- **Bluetooth Pairing (from Off state):** Press and hold for 5 seconds.

### Mode Switching (Game/Music)

The speaker offers two distinct audio modes:

- **Switch Mode:** Double press the Power button to toggle between Game Mode (powerful bass, low latency) and Music Mode (balanced EQ).

### RGB Light Control

Manage the transparent RGB lighting effects:

- **Light Effects On/Off:** Triple press the Power button.

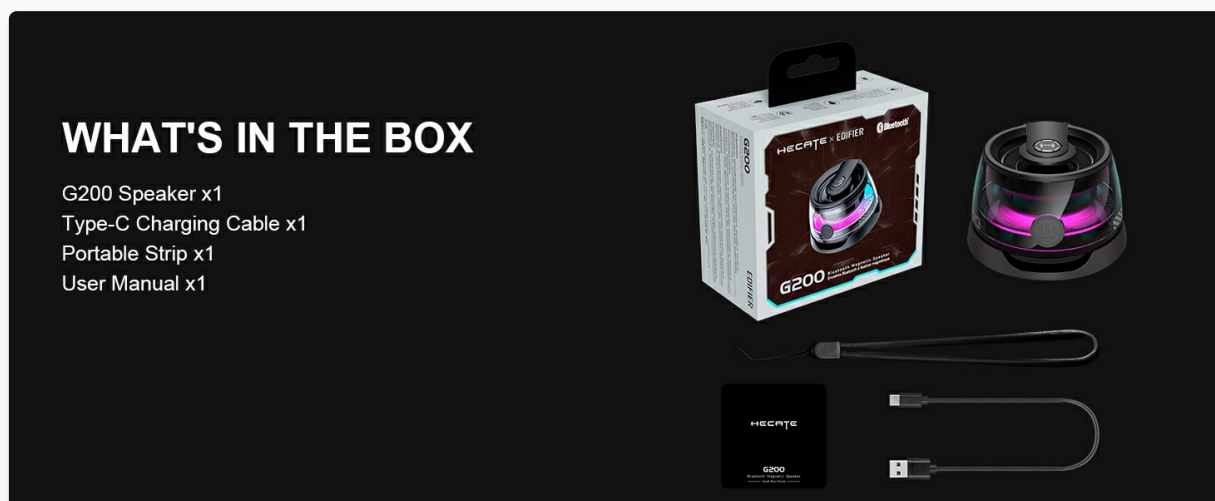


Figure 3: Simple Button Control Overview

## KEY FEATURES

### Magnetic Base & Phone Stand

The G200 features a strong magnetic base, allowing it to securely attach to Mag-Safe compatible iPhones (12/13/14/15 mini pro Max) or any metal surface. It can function as a convenient phone stand for watching

videos, browsing, or video calls. A metal ring is included for compatibility with other phones.

# MAGNETIC MINI SPEAKER

62.5g ultra light design with mini size make it portable for outdoors



Figure 4: Magnetic Versatility

Your browser does not support the video tag.

Video 2: Edifier G200 Magnetic Bluetooth Speaker - Portable Phone Stand for iPhone. This video highlights the magnetic attachment and phone stand functionality of the speaker.

## Colorful RGB Light

The transparent design of the G200 incorporates dynamic RGB light effects, creating an immersive visual experience that complements your audio, especially during gaming.



# COLORFUL RGB LIGHT

Transparent design with RGB light effects for immersive gaming atmosphere

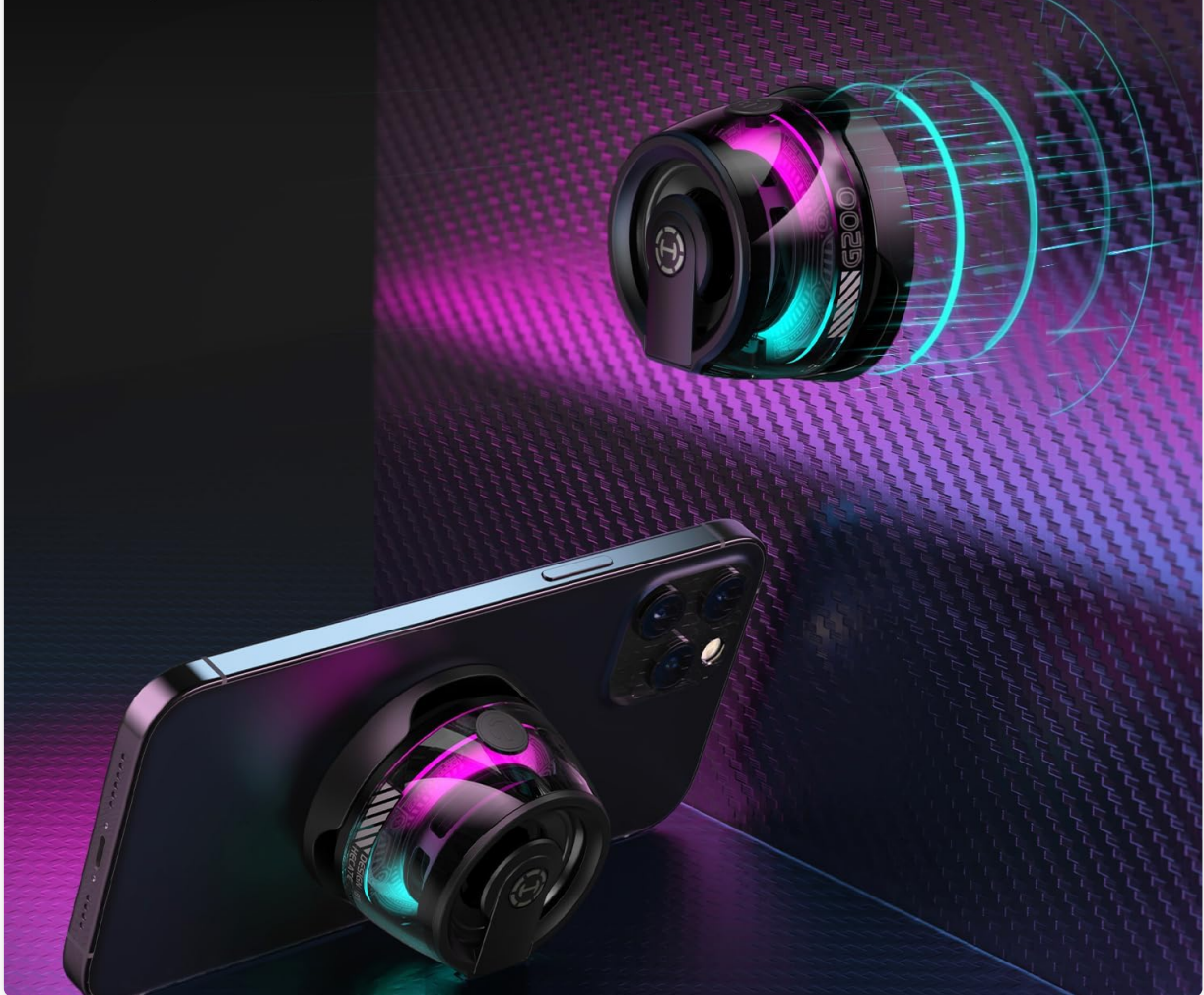


Figure 5: Colorful RGB Light

## Clear Stereo Sound

Equipped with a 40mm dynamic driver, the G200 delivers 3W RMS and up to 5W peak power, providing full-range audio with powerful bass for its compact size.



Figure 6: Clear Stereo Sound Driver

SPECIFICATIONS

Feature	Detail
Model Name	G200
Speaker Type	Multimedia, Portable Bluetooth Speaker
Connectivity Technology	Bluetooth 5.3
Wireless Communication Range	33 Feet (10m)
Speaker Maximum Output Power	5 Watts (3W RMS)
Audio Driver Type	40mm Dynamic Driver
Battery Life	7 Hours (at 50% volume)
Charging Port	Type-C

Product Dimensions	2.2"D x 2.2"W x 1.4"H
Item Weight	2.2 Ounces
Special Features	Portable, Lightweight, RGB Light, Magnetic Base, Game/Music Mode
Material	Plastic
Color	Black

### MAINTENANCE

- **Cleaning:** Use a soft, dry cloth to clean the speaker. Do not use abrasive cleaners or solvents.
- **Storage:** Store the speaker in a cool, dry place away from direct sunlight and extreme temperatures.
- **Water Resistance:** The speaker is NOT waterproof. Avoid exposure to water or excessive moisture.
- **Battery Care:** To prolong battery life, avoid fully discharging the speaker frequently. Charge it regularly, even if not in use for extended periods.

### TROUBLESHOOTING

Problem	Possible Solution
Speaker does not turn on.	Ensure the battery is charged. Connect to a power source using the Type-C cable.
Cannot pair via Bluetooth.	Ensure the speaker is in pairing mode (flashing RGB light). Turn off and on Bluetooth on your device. Move the speaker closer to your device. Forget "Edifier G200" from your device's Bluetooth list and try pairing again.
No sound or low volume.	Increase volume on both the speaker and your connected device. Ensure the speaker is properly paired. Check if the audio source is playing.
RGB lights are not working.	Triple press the Power button to toggle the light effects on/off.

### WARRANTY AND SUPPORT

The Edifier G200 Magnetic Bluetooth Speaker comes with a one-year limited warranty from the date of purchase. This warranty covers manufacturing defects and workmanship.

For warranty claims, technical support, or any inquiries, please contact Edifier US customer service:

- **Website:** [Visit the Edifier Store on Amazon](#)
- Refer to the official Edifier website for the most up-to-date support information.

*Please retain your proof of purchase for warranty validation.*



