

Manuals.plus /

› HEIGAOLAPC /

› HEIGAOLAPC F10 N5095 Mini PC with Battery User Manual

HEIGAOLAPC F10 N5095

HEIGAOLAPC F10 N5095 Mini PC with Battery User Manual

Model: F10 N5095

1. INTRODUCTION

This manual provides essential information for the proper setup, operation, and maintenance of your HEIGAOLAPC F10 N5095 Mini PC. Please read this manual thoroughly before using the device to ensure optimal performance and longevity. This Mini PC is designed for various applications, including business, home entertainment, and industrial production, offering a compact and versatile computing solution.

2. SAFETY INFORMATION

Observe the following safety precautions to prevent damage to the device or injury to yourself:

- Use only the power adapter provided with the device.
- Do not expose the device to water, moisture, or extreme temperatures.
- Avoid placing the device near heat sources or in direct sunlight.
- Do not attempt to open or repair the device yourself. Refer all servicing to qualified personnel.
- Ensure proper ventilation around the device to prevent overheating.

3. PACKAGE CONTENTS

Verify that all items are present in your package:

- 1 x HEIGAOLAPC F10 N5095 Mini PC
- 1 x Power Adapter
- 1 x User Manual (this document)

4. PRODUCT OVERVIEW

4.1 Device Layout

The HEIGAOLAPC F10 N5095 Mini PC features a compact design with a 10.1-inch touchscreen and a comprehensive set of ports for connectivity.



Image: Top and rear view of the HEIGAOLAPC F10 N5095 Mini PC, highlighting its integrated touchscreen and port layout.

4.2 Port Configuration

The device is equipped with a variety of input/output ports to support diverse peripherals and display options.

Transmission using RS232 technology



Image: Detailed port diagram of the Mini PC, showing the location and type of each connector.

- **Security Lock:** For physical security.
- **SD Card Slot:** For expandable storage.
- **USB 3.0 Ports (x4):** For connecting USB devices such as keyboards, mice, and external storage.
- **Headset Jack:** For audio output and microphone input.
- **DC 12V Power Input:** Connect the provided power adapter here.
- **Gigabit Ethernet Port (LAN):** For wired network connection.
- **HDMI 2.0 Ports (x2):** Supports 4K video output for external displays.
- **Type-C Port:** Multi-functional port for data transfer and display output.
- **RS232 Ports (x2):** Serial ports for industrial or legacy device connections.
- **Power Button:** To turn the device on/off.

5. SETUP INSTRUCTIONS

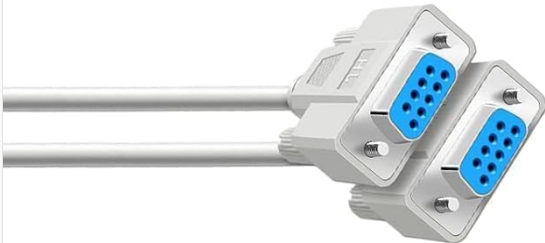
5.1 Initial Connection

1. **Connect Peripherals:** Connect your keyboard, mouse, and any other USB devices to the available USB 3.0 ports.
2. **Connect to Display (Optional):** If using an external monitor, connect it to one of the HDMI 2.0 ports or the Type-C port. The device supports dual 4K displays.
3. **Network Connection:** For wired internet, connect an Ethernet cable to the Gigabit Ethernet port. For wireless, ensure Wi-Fi is enabled (see Section 6.2).
4. **Power On:** Connect the power adapter to the DC 12V input port on the Mini PC, then plug the adapter into a power outlet. Press the power button to turn on the device.



RS232 Ports Are Widely Used For Computer Serial Interface Peripheral Connections.

It is used to connect cables and mechanical and electrical characteristics, signal functions and transmission processes.



RS232 AND HDMI 2.0 EXPANDS DIFFERENT CONTENT



HDMI 2.0 Supports 4K Video Playback, Watching High Definition TV

Meet different needs synchronize audio and video, realize high definition conversion.



Image: Example connections for RS232 and HDMI 2.0 ports.

5.2 Operating System First Boot

Your Mini PC comes pre-installed with Windows 11 Pro. Upon first boot, follow the on-screen instructions to complete the initial Windows setup, including language, region, network connection, and user account creation.

6. OPERATING INSTRUCTIONS

6.1 Touchscreen Operation

The 10.1-inch HD touchscreen allows for direct interaction with the operating system without the need for a mouse or keyboard. Use standard touch gestures for navigation, selection, and input.



10.1 Inch Touch Screen MINI PC

It can touch screen more convenient operation control other devices, No mouse and keyboard required



10.1 Inch
Screen



Quick and
sensitive



Support three
screen display



With
battery

Image: The 10.1-inch touchscreen Mini PC supporting multiple screen displays.

6.2 Wireless Connectivity (Wi-Fi and Bluetooth)

The Mini PC supports Wi-Fi 5.0 (dual-band 2.4GHz and 5.0GHz) and Bluetooth 5.2 for wireless connections.

- **Wi-Fi:** To connect to a wireless network, go to Windows Settings > Network & Internet > Wi-Fi, then select your desired network and enter the password.
- **Bluetooth:** To pair Bluetooth devices, go to Windows Settings > Bluetooth & devices > Bluetooth, ensure Bluetooth is turned on, and select 'Add device'.

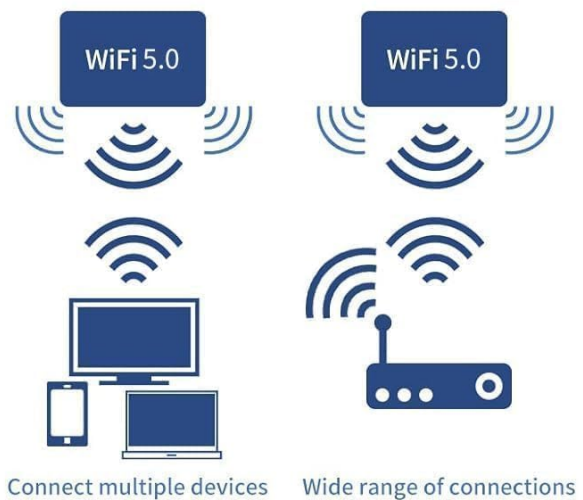
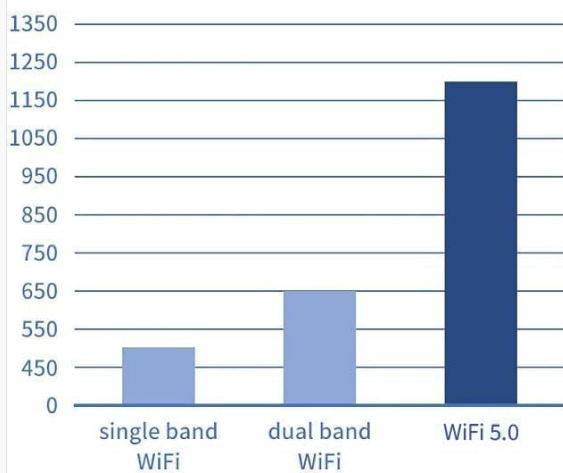
1000 Mbps Gigabit Ethernet

Gigabit network can meet the web browsing, surfing, fast response to our daily work and entertainment.



WiFi 5.0

WiFi 5.0 can send and receive information to and from multiple devices at the same time without lagging, even when multiple devices are connected.



WiFi with HEIGAO standard can reach speed up to 1200Mbps with dual stream in 802.11a/b/g/n/ac/ax to connect the wireless LAN.

10.1 MINI PC function provides simultaneous and relatively faster connection for better live performances and faster data transfer.

Image: Wi-Fi 5.0 connectivity features.

6.3 Multi-Display Setup

The Mini PC supports connecting up to two external displays via its HDMI 2.0 ports and Type-C port, in addition to its integrated touchscreen. This allows for extended desktop or mirrored display configurations.

Mini PC Windows 11 Pro Efficiently Office Work



Image: Mini PC connected to multiple monitors for enhanced productivity.

6.4 RS232 Port Usage

The dual RS232 ports are designed for serial communication with various industrial or specialized devices. These ports are commonly used for connecting point-of-sale systems, barcode scanners, or other legacy equipment.



Image: Example of RS232 port in use for data transmission.

6.5 Auto-Boot and Wake-on-LAN

The Mini PC supports advanced power management features:

- **Auto Power On:** Configurable in the BIOS, this feature allows the PC to automatically power on after a power outage or at a scheduled time.
- **Wake on LAN (WoL):** Enables the PC to be powered on remotely over a network connection. This feature is useful for remote management and maintenance.
- **PXE Boot:** Allows the PC to boot from a network server, useful for deploying operating systems or running diagnostics.
- **RTC Wake Settings:** Real-Time Clock wake-up allows scheduling the PC to power on at a specific time.

7. MAINTENANCE

- **Cleaning:** Use a soft, dry cloth to clean the exterior of the device. For the touchscreen, use a screen-specific cleaner and a microfiber cloth. Avoid abrasive cleaners or solvents.
- **Ventilation:** Ensure the ventilation holes are clear of dust and obstructions to maintain proper airflow and prevent overheating.
- **Software Updates:** Regularly update your operating system and drivers to ensure optimal performance and security.
- **Storage:** When not in use for extended periods, store the Mini PC in a cool, dry place.

8. TROUBLESHOOTING

- **No Power:** Ensure the power adapter is securely connected to both the Mini PC and a working power outlet. Try a different outlet if necessary.
- **No Display on External Monitor:** Verify that the HDMI or Type-C cable is properly connected. Check the input source on your monitor. Press Windows key + P to cycle through display modes.

- **Wi-Fi/Bluetooth Issues:** Check if Wi-Fi/Bluetooth is enabled in Windows Settings. Restart the Mini PC and your router/Bluetooth device.
- **Touchscreen Unresponsive:** Restart the device. If the issue persists, check for driver updates or recalibrate the touchscreen in Windows settings.
- **Slow Performance:** Close unnecessary applications. Check for background processes consuming high resources. Ensure sufficient free storage space.

9. SPECIFICATIONS

Detailed technical specifications for the HEIGAOLAPC F10 N5095 Mini PC:

The infographic displays the following specifications in individual boxes:

- Type-C 3.1 Full Functionality** (with Type-C port icon)
- x1 1000Mbps Gigabit Lan** (with Ethernet port icon)
- TF Card up to 512GB** (with TF card icon)
- 8 GB RAM** (with RAM module icon)
- 128 GB ROM** (with ROM chip icon)
- Pre-installed Win 11 Pro** (with Windows logo icon)
- UHD Graphics** (with GPU icon)
- 5.0 Wi-Fi** (with Wi-Fi signal icon)
- 5.0 Bluetooth** (with Bluetooth signal icon)

A central image shows the **11th Intel Jasper Lake-N5095** processor chip on a circuit board.

Image: Key features and specifications of the Mini PC.

Feature	Specification
Model	F10
Processor	Intel Celeron N5095 (2.0 GHz base, up to 2.7 GHz burst, 4MB cache)
RAM	8GB LPDDR4
Storage	128GB eMMC
Graphics	Intel UHD Graphics 600
Operating System	Windows 11 Pro (pre-installed), supports Windows 10, Linux, Ubuntu
Display	10.1-inch HD Touchscreen (1280x800 pixels)
Wireless Connectivity	Wi-Fi 5.0 (802.11ax, dual-band 2.4GHz/5.0GHz), Bluetooth 5.2
Wired Connectivity	1x Gigabit Ethernet (10/100/1000Mbps)
Ports	4x USB 3.0, 2x HDMI 2.0 (4K support), 2x RS232, 1x Type-C, 1x TF Card Slot, 1x Headset Jack, 1x DC 12V Power Input
Special Features	Fanless design, TPM 2.0, Wake on LAN, PXE Boot, Auto Power On, RTC Wake Settings
Dimensions	Approximately 9.5 x 6.3 x 2.6 inches
Weight	Approximately 2.87 pounds

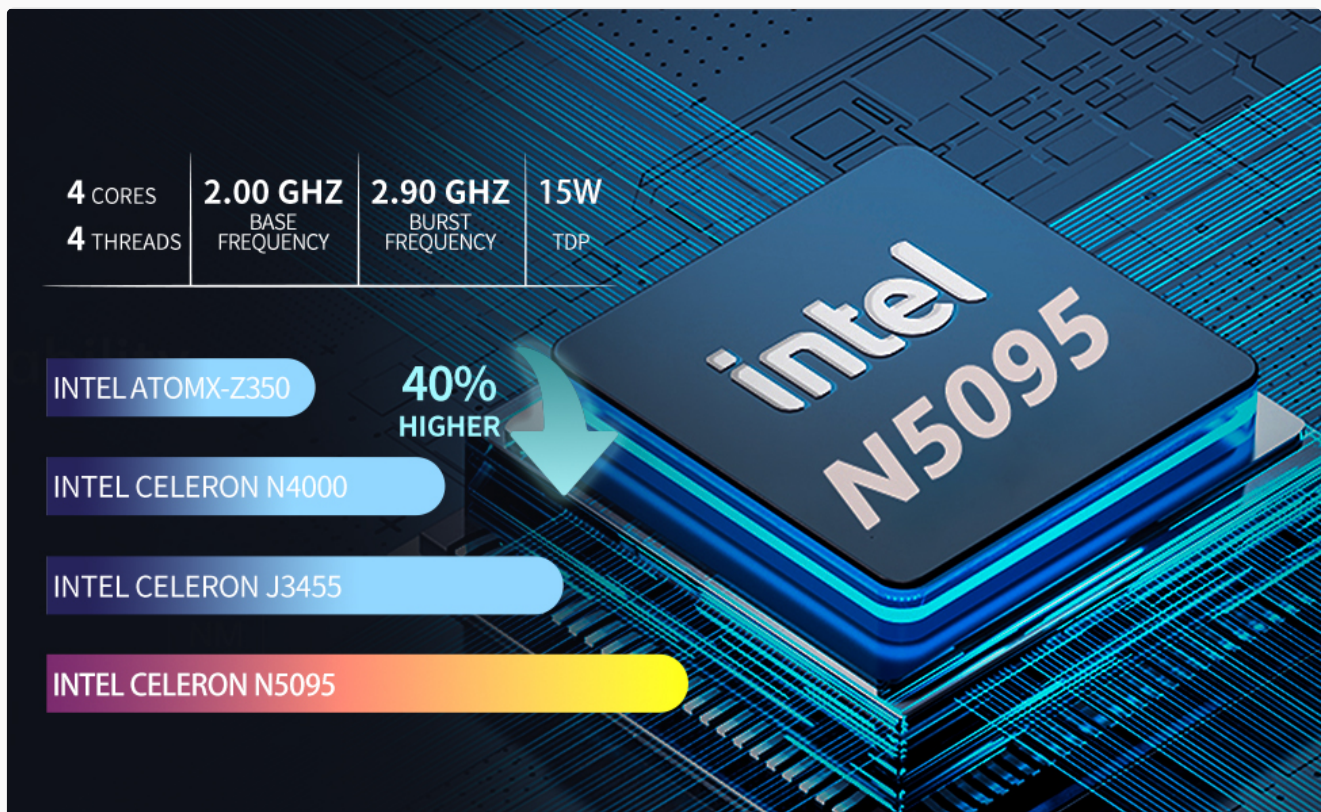


Image: Intel N5095 processor specifications and performance overview.



Image: Operating system compatibility, including Windows 11 Pro, Linux, and Ubuntu.

10. WARRANTY AND SUPPORT

HEIGAOLAPC is committed to customer satisfaction. Your product includes:

- **30-Day Price Protection:** If the price of the product changes within 30 days of your purchase, you may be eligible for a refund of the difference.
- **24-Hour Customer Support:** For any technical assistance or inquiries, please contact our customer support team.

For further support or warranty claims, please refer to the contact information provided on the HEIGAOLAPC official website or your purchase documentation.