

Manuals+

[Q & A](#) | [Deep Search](#) | [Upload](#)

[manuals.plus](#) /

- › [Pard](#) /
- › [PARD Night Stalker 4K Night Vision Scope User Manual](#)

Pard NS4-70/850/LRF

PARD Night Stalker 4K Night Vision Scope User Manual

Model: NS4-70/850/LRF

INTRODUCTION

This manual provides comprehensive instructions for the safe and effective operation, maintenance, and troubleshooting of your PARD Night Stalker 4K Night Vision Scope. Please read this manual thoroughly before using the device to ensure optimal performance and longevity.

The PARD Night Stalker 4K is an advanced day/night vision rifle scope featuring a 4K CMOS sensor, integrated ballistic calculator, 1000m rangefinder, and video recording capabilities. It is designed for enhanced target recognition and precision in various lighting conditions.

PACKAGE CONTENTS

Upon opening the package, please verify that all components are present and in good condition. If any items are missing or damaged, contact PARD customer support immediately.



Image: All components included in the PARD Night Stalker 4K package, including the scope, scope cover, rubber eyepiece,

cleaning cloth, Type-C cable, Allen wrench set, mount rings, and user manual.

- PARD Night Stalker 4K Night Vision Scope
- Scope Cover
- Rubber Eyepiece
- Cleaning Cloth
- Type-C USB Cable
- Allen Wrench Set
- Mount Rings (Picatinny/Weaver compatible)
- User Manual (this document)

SETUP

1. Mounting the Scope

The PARD Night Stalker 4K is designed for Picatinny or Weaver mounts. Ensure your rifle has a compatible rail system.

1. Attach the provided mount rings to your rifle's Picatinny or Weaver rail. Ensure they are securely fastened using the Allen wrench.
2. Place the Night Stalker 4K scope into the mount rings.
3. Adjust the scope's position for optimal eye relief (approximately 100mm) and comfortable viewing.
4. Tighten the mount ring screws evenly to secure the scope. Do not overtighten.



Image: Illustration of the scope mounting process, highlighting the secure attachment of the scope to the rifle's rail system using the provided rings.

2. Battery Installation

The Night Stalker 4K uses rechargeable batteries. Ensure batteries are fully charged before first use.

1. Locate the battery compartment, typically on the side or bottom of the scope.
2. Insert the charged batteries according to the polarity indicators.
3. Securely close the battery compartment cover.

3. Initial Power On and Focus Adjustment

1. Press and hold the power button to turn on the device.
2. Adjust the diopter on the eyepiece until the reticle appears sharp and clear.
3. Adjust the objective lens focus ring to bring the target image into sharp focus.



Image: Detail of the focus adjustment knob, indicating its location and function for achieving a clear image.

OPERATING INSTRUCTIONS

1. Day and Night Modes

The Night Stalker 4K automatically or manually switches between day and night vision modes, providing optimal viewing in varying light conditions.



Image: Visual representation of the scope's performance in both daylight and night vision modes, demonstrating clear target acquisition.

2. Zeroing the Scope

Accurate zeroing is crucial for precise shooting. The Night Stalker 4K features a swift and simple zeroing process.

1. Set up a target at your desired zeroing distance.
2. Fire a shot and observe the point of impact.
3. Access the zeroing menu (refer to on-screen prompts or user interface guide).
4. Adjust the reticle's X and Y coordinates to align with the bullet's impact point.
5. Save the zeroing data. The scope can store up to 5 sets of zeroing data for different firearms or distances.

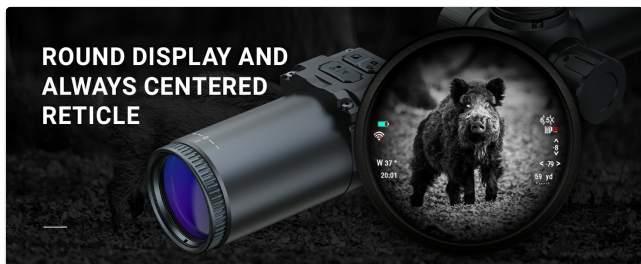


Image: The scope's display during the zeroing process, illustrating how to adjust the reticle to match the point of impact.

3. Ballistic Calculator

The integrated ballistic calculator assists in precise aiming by computing trajectory parameters.

1. Input relevant data such as projectile velocity, weight, and zero range into the scope's settings.
2. The calculator will provide an adjusted aiming point based on these parameters and environmental factors.



Image: A visual explanation of the ballistic calculator, demonstrating how it adjusts for bullet drop and other factors to ensure accurate shots.

4. Laser Rangefinder (LRF)

The 1000m LRF allows for quick and accurate distance measurement to targets.

1. Activate the rangefinder function (refer to button layout).
2. Aim the reticle at the target and press the measurement button.
3. The distance will be displayed on the screen.



Image: The rangefinder display, showing a target and the measured distance, indicating its capability for long-distance measurements.

5. Integrated IR Illuminator

The built-in IR illuminator enhances visibility in low-light and complete darkness.

1. Activate the IR illuminator via the designated button.
2. Adjust the IR intensity level as needed for optimal illumination without overexposure.



Image: The IR illuminator in operation, showing the emitted infrared light for enhanced night vision capabilities.

6. Video Recording and Picture-in-Picture (PIP)

Capture your observations with video recording and utilize the Picture-in-Picture function for enhanced detail.

- **Video Recording:** Press the record button to start/stop video capture. Files are saved to an internal memory or an inserted SD card (check specifications for compatibility).
- **Picture-in-Picture (PIP):** Activate PIP mode to display a magnified view of the reticle area in a smaller window on the main screen, allowing for precise aiming while maintaining situational awareness.



Image: The Picture-in-Picture display, showing a magnified view of the target within the main field of view.

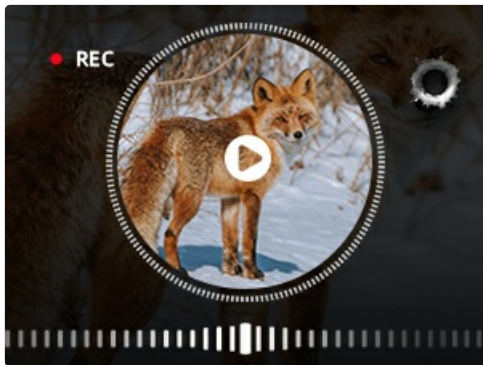


Image: The scope's display showing the active video recording indicator, confirming the device is capturing footage.

7. Wi-Fi Connectivity and Firmware Updates

Connect your scope to a mobile device via Wi-Fi for remote viewing, control, and firmware updates.

- Download the official PARD app to your smartphone or tablet.
- Enable Wi-Fi on the scope and connect to its network from your mobile device.
- Follow the app's instructions for remote operation and to check for and install the latest firmware updates.

MAINTENANCE

- **Cleaning Lenses:** Use the provided cleaning cloth or a soft, lint-free cloth specifically designed for optics. Gently wipe the lens surfaces to remove dust and smudges. For stubborn dirt, use a specialized optical cleaning solution.
- **Body Cleaning:** Wipe the scope's body with a damp cloth. Avoid using harsh chemicals or abrasive materials.
- **Storage:** When not in use, store the scope in a dry, cool place, away from direct sunlight and extreme temperatures. Use the provided scope cover to protect the lenses and body.
- **Battery Care:** Remove batteries if the device will not be used for an extended period. Store batteries in a cool, dry place.
- **Waterproof Rating:** The device has an IP65 waterproof rating, meaning it is protected against dust ingress and low-pressure water jets. Do not submerge the device in water.

TROUBLESHOOTING

Problem	Possible Cause	Solution
Device does not power on.	Low or depleted battery. Incorrect battery installation.	Charge or replace batteries. Ensure batteries are inserted with correct polarity.
Image is blurry or out of focus.	Diopter or objective lens not adjusted correctly. Dirty lenses.	Adjust diopter and objective lens focus. Clean lenses with a soft cloth.
Scope does not hold zero.	Improper mounting. Recoil exceeding limits.	Ensure mount rings are securely tightened. Verify compatibility with firearm recoil (rated for 6000J). Re-zero the scope carefully.
IR illuminator not working.	IR function not activated. Low battery.	Activate IR illuminator in the menu. Check battery level.
Cannot connect to Wi-Fi.	Wi-Fi not enabled on scope. Incorrect password. App issues.	Enable Wi-Fi on the scope. Verify Wi-Fi password. Restart app and scope.

SPECIFICATIONS

Feature	Detail
Model Name	Night Stalker 4K (NS4-70/850/LRF)
Sensor Resolution	3840 x 2160 (4K CMOS)
Magnification (Maximum)	7x
Objective Lens Diameter	30mm
Eye Relief	100mm (3.94 inches)
Rangefinder Range	Up to 1000m (1200 yards)
Material	Aluminium Alloy
Item Weight	495 Grams
Product Dimensions	6.9"L x 2.16"W x 2.75"H (410*88*95mm with long eyepiece)
Waterproof Rating	IP65
Recoil Resistance	6000J
Connectivity	Wi-Fi
Included Components	Housing, Objective Lens, Mount Rings, USB Cable, Cleaning Cloth, User Manual

WARRANTY AND SUPPORT





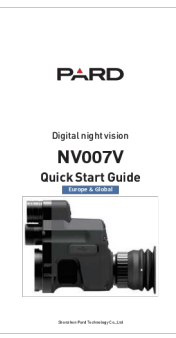
PARD offers a **2-year limited warranty** on the Night Stalker 4K Night Vision Scope. This warranty covers any manufacturer defects. For warranty claims or technical support, please contact PARD customer service.

PARD has a branch company in the United States that provides maintenance services. For service inquiries, please refer

to the contact information provided on the official PARD website or your purchase documentation.

For the most up-to-date information, firmware, and support resources, please visit the official PARD website:
www.pard.com

Related Documents - NS4-70/850/LRF

	<p>PARD Night Stalker 4K Pro Digital Night Vision Scope User Manual</p> <p>Comprehensive user manual for the PARD Night Stalker 4K Pro Digital Night Vision Scope, detailing specifications, installation, operation, features, and safety precautions for optimal use.</p>
	<p>PARD NV008P & NV008P-LRF Digital Night Vision User Manual</p> <p>Comprehensive user manual for the PARD NV008P and NV008P-LRF digital night vision devices, covering installation, operation, features, specifications, and warranty information.</p>
	<p>PARD NV007V Digital Night Vision Operation Manual</p> <p>Comprehensive operation manual for the PARD NV007V digital night vision device, covering installation, usage instructions, features, specifications, and warranty information.</p>
	<p>PARD NV008S/NV008S-LRF Digital Night Vision User Manual</p> <p>Comprehensive user manual for PARD NV008S and NV008S-LRF digital night vision devices, covering features, operation, installation, and technical specifications.</p>
	<p>PARD FD1-LRF Series Digital Night Vision Front Clip-on User Manual</p> <p>User manual for the PARD FD1-LRF Series Digital Night Vision Front Clip-on device, covering introduction, precautions, specifications, installation, operation, functions, and FCC warnings.</p>
	<p>PARD NV007V Digital Night Vision Quick Start Guide</p> <p>A comprehensive guide to the PARD NV007V digital night vision device, covering package contents, components, installation, key features, precautions, and specifications. Includes multilingual instructions.</p>