

INKEE GC12

INKEE GC12 Inflatable LED Tube Light User Manual

Model: GC12

Overview

What's in the
Box

Setup
Specifications

Operation
Support

Maintenance

Troubleshooting

1. PRODUCT OVERVIEW

The INKEE GC12 is a 12W Bi-Color Inflatable LED Tube Light designed for professional video recording and photography. It features a wide color temperature range, flexible design, and portable power, making it suitable for various lighting scenarios.





Image 1.1: The INKEE GC12 Inflatable LED Tube Light shown with its included data cable and storage bag.

Key Features:

- **12W Bi-Color LED:** Features CRI 95+ lamp beads with an adjustable color temperature range from 2700K to 6500K.
- **Inflatable Design:** Can be inflated into a 60cm stick light or deflated into a flexible cloth light for versatile styling.
- **Multifunctional Air Nozzle:** Supports both electric and manual inflation, with easy deflation for storage.
- **Built-in Battery:** Equipped with an 18.5Wh lithium battery, providing approximately 75 minutes of use at full power. Supports 15W fast charging, reaching full charge in about 120 minutes.
- **Durable and Waterproof:** Constructed with a high-strength TPU airbag, offering IP66 protection against water and wear.
- **Magnetic Mounting:** Three built-in N52 magnets allow for secure attachment to iron surfaces.
- **Intuitive Display:** A 0.96-inch color screen displays working status and lighting modes.

2. WHAT'S IN THE BOX

Please check the package contents upon unboxing:

- INKEE GC12 Inflatable LED Tube Light x 1
- USB Data Cable x 1
- User Manual x 1
- Storage Bag x 1

3. SETUP

3.1 Initial Charging

Before first use, fully charge the device. Connect the provided USB data cable to the USB Type-C port on the light and to a compatible 15W fast charger (not included). The 0.96-inch color screen will indicate charging status.



Image 3.1: Illustration of the built-in 18.5Wh lithium battery and 15W fast charging capability.

A full charge from 0% typically takes approximately 120 minutes.

3.2 Inflation and Deflation

The GC12 can be used in two forms: inflated as a stick light or deflated as a flexible cloth light.

- **To Inflate:** Locate the multifunctional air nozzle. You can inflate the light manually by blowing into the nozzle or by using an electric pump. Inflate until the light forms a rigid 60cm stick.
- **To Deflate:** Press and hold the air nozzle to release the air. Once deflated, the light transforms into a flexible cloth, convenient for storage and alternative lighting setups.

Multifunctional air nozzle makes filling and deflating easy and convenient

This light supports electric and manual blowing and can be unfolded and used anytime and anywhere. Press and hold the air nozzle to deflate and fold it for storage.



Image 3.2: Demonstrates the multifunctional air nozzle for both mouth blowing and machine pumping to inflate the light.

Can be soft or hard, and able to bend or stretch

Blow the air to transform into a 60cm stick light.
Deflate it to transform into a flexible cloth light
which is convenient for styling and lighting.



Image 3.3: The GC12 light shown in its flexible, deflated state and its rigid, inflated stick form, demonstrating its versatility.

3.3 Mounting Options

The GC12 offers several mounting possibilities:

- **Magnetic Attachment:** Utilize the three built-in N52 magnets to firmly attach the light to any iron brackets or metallic surfaces.
- **Flexible Positioning:** When deflated, the light can be bent and stretched to conform to various shapes and positions for creative lighting.

N52 magnet, firmly adsorbed

Built-in three N52 magnets allow the GC12 to be attached to any iron brackets and accessories, making it more convenient for outdoor use.



Image 3.4: The GC12 light magnetically attached to a camera rig, highlighting the N52 magnets.

4. OPERATING INSTRUCTIONS

4.1 Power On/Off

Locate the power button on the control panel. Press and hold to power the device on or off.

4.2 Adjusting Color Temperature

The GC12 allows for precise adjustment of color temperature from 2700K (warm light) to 6500K (cool light). Use the dedicated buttons on the control panel to increase or decrease the color temperature. The 0.96-inch color screen will display the current setting.

Wide range adjustable Bi-color temperature.

The color temperature range is adjustable from 2700K-6500K, simulating different natural light sources to create professional light effects.

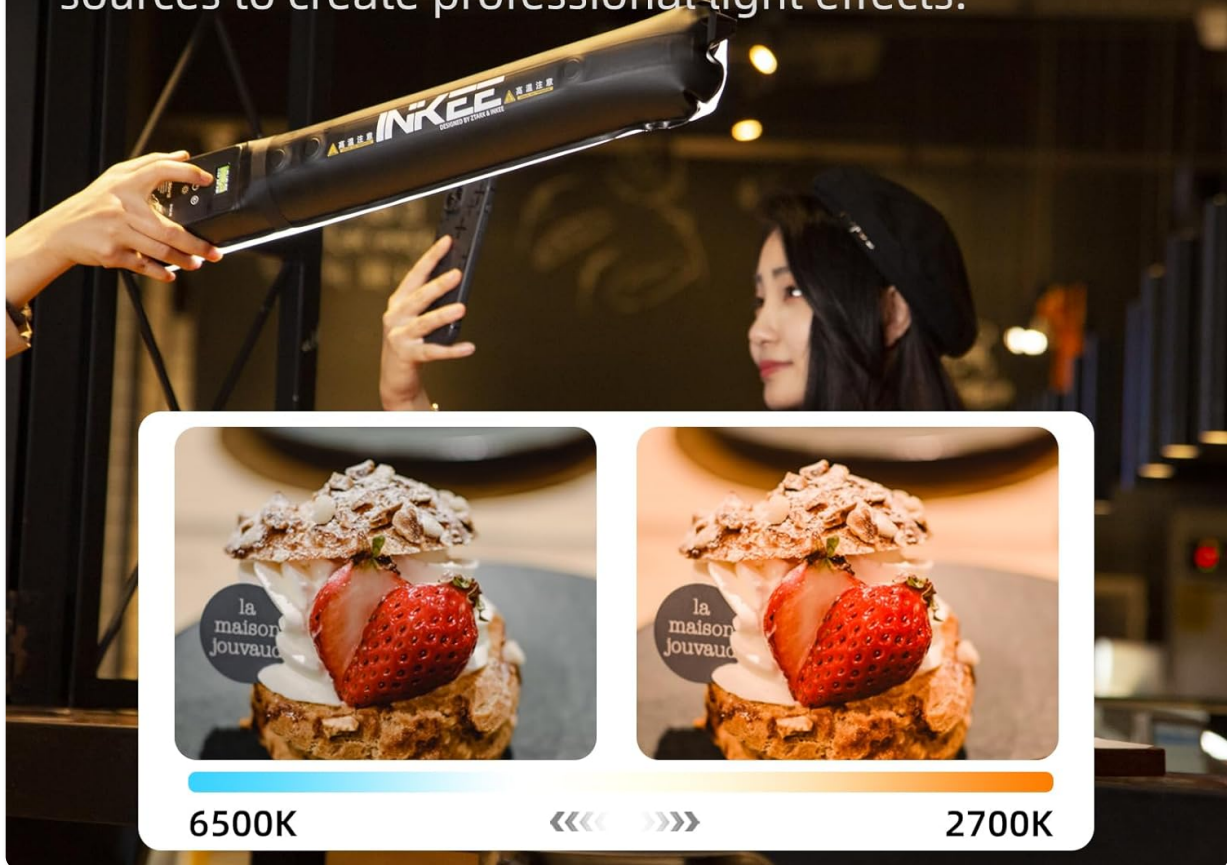


Image 4.1: Demonstrates the adjustable bi-color temperature range of the GC12, from 6500K to 2700K.

4.3 Adjusting Brightness

Use the brightness control buttons on the panel to adjust the light intensity from 0% to 100%. The current brightness level will be shown on the display screen.

4.4 Understanding the Display Screen

The 0.96-inch color screen provides real-time information about the light's status, including:

- Battery percentage and remaining usage time.
- Current color temperature (K).
- Brightness level (%).
- Working status and selected lighting mode.

Color screen display gives clear view

The 0.96-inch color screen displays the working status of GC12, make the working status and lighting mode more intuitive.



Image 4.2: Close-up of the 0.96-inch color screen displaying battery, brightness, and color temperature settings.

5. MAINTENANCE

5.1 Cleaning

To clean the light, gently wipe the exterior with a soft, damp cloth. Avoid using harsh chemicals or abrasive materials that could damage the TPU airbag or control panel.

5.2 Storage

For long-term storage, deflate the light completely and store it in the provided storage bag. This protects the device and saves space.

5.3 Water Resistance

The INKEE GC12 features an IP66 protection level, making it resistant to dust and powerful water jets. It can be used in most harsh environments, including light rain. However, avoid submerging the device in water for extended periods.

Ready to use and work

Can be used as soon as you get it. IP66 Protection level makes it can be used in most harsh environments.



Image 5.1: The GC12 light operating under simulated rain conditions, illustrating its IP66 protection level.

6. TROUBLESHOOTING

Problem	Possible Cause	Solution
Light does not turn on.	Battery is depleted.	Charge the device using the provided USB data cable and a compatible power adapter.
Light does not inflate properly.	Air nozzle not sealed or insufficient air.	Ensure the air nozzle is properly sealed after inflation. Add more air if necessary.
Charging is slow or not working.	Incompatible charger or damaged cable/port.	Use a 15W fast charger. Check the USB cable for damage. Ensure the charging port is clean and free of debris.
Inconsistent light output.	Low battery or internal issue.	Ensure the battery is sufficiently charged. If the problem persists, contact customer support.

7. SPECIFICATIONS

Feature	Detail
Model Number	GC12
Power Output	12W
Color Temperature	2700K-6500K
CRI	95+
Battery Capacity	18.5Wh Lithium Ion (included)
Full Power Usage Time	Approx. 75 minutes
Charging Time	Approx. 120 minutes (with 15W fast charger)
Charging Interface	USB Type-C
Protection Level	IP66
Magnets	3 x N52 magnets
Display Screen	0.96-inch color screen
Item Weight	10.8 ounces (approx. 306 grams)
Package Dimensions	9.09 x 5.55 x 1.85 inches

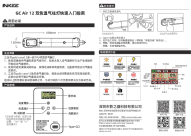
8. WARRANTY AND SUPPORT


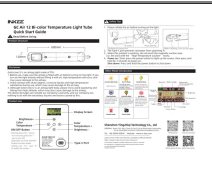
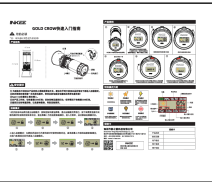

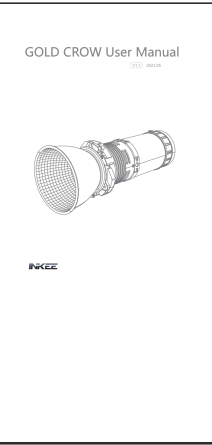
For warranty information and technical support, please refer to the official INKEE website or contact your retailer. Keep your purchase receipt as proof of purchase for any warranty claims.

For further assistance, please visit: [www.inkee.cn](#) (Example link, replace with actual support link if available).

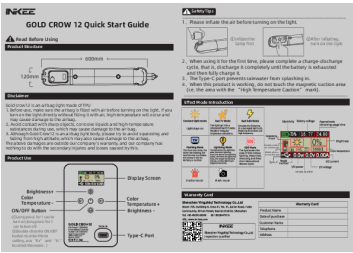
© 2025 INKEE. All rights reserved.

Related Documents - GC12

	<p>INKEE GC Air 12 Bi-Color Temperature LED Tube Quick Start Guide</p> <p>Concise guide for the INKEE GC Air 12 bi-color temperature LED tube, covering product structure, safety precautions, usage instructions, special effect modes, and company information.</p>
---	---

	<p>INKEE Gold Crow 150 LED Light User Manual and Specifications</p> <p>Comprehensive user manual and technical specifications for the INKEE Gold Crow 150 LED light, covering safety, product structure, operation, and light parameters.</p>
	<p>INKEE GC Air 12 Bi-color Temperature Light Tube Quick Start Guide</p> <p>This quick start guide provides essential information for the INKEE GC Air 12 Bi-color Temperature Light Tube, including setup, safety precautions, and operational modes.</p>
	<p>INKEE GOLD CROW Bi-Color LED Light Quick Start Guide</p> <p>Concise guide for the INKEE GOLD CROW Bi-Color LED light, detailing product structure, safety precautions, transport mode, control operations, effect modes, and warranty information.</p>
	<p>INKEE Gold Crow LED Monolight User Manual V1.3</p> <p>Comprehensive user manual for the INKEE Gold Crow Daylight/Bi-color LED Monolight. Learn about product features, setup, operation, effect modes, firmware updates, charging, troubleshooting, and technical specifications.</p>
	<p>INKEE Gold Crow LED Monolight User Manual</p> <p>Comprehensive user manual for the INKEE Gold Crow Daylight/Bi-color LED Monolight, covering product overview, structure, interface, modes, firmware updates, usage, maintenance, precautions, and technical specifications.</p>

Documents - INKEE – GC12



[pdf] User Manual Quick Start Guide Guide Warranty

SK921 V1 0 GC12 User Manual Data INKEE 2024041009084755 in kee 2024 04 |||

GOLD CROW 12 Quick Start Guide Safety Tips 1Please inflate the air before turning on the light. Read Before Using Product Structure 120mm 600mm Disclaimer Gold crow12 is an airbag light made of TPU 1. Before use, make sure the airbag is filled with air before turning on the light. If ...

lang:en score:21 filesize: 1.96 M page_count: 1 document date: 2024-04-10