

[Manuals.plus](#) /

> [FITCAMX](#) /

> Fitcamx 4K Dash Cam Instruction Manual for Mazda CX-30 & MX-30 EV (Has Sunroof)

## FITCAMX Front 4K

# Fitcamx 4K Dash Cam Instruction Manual

Model: Front 4K

## INTRODUCTION

This manual provides detailed instructions for the installation, operation, and maintenance of your Fitcamx 4K Dash Cam. Designed for seamless integration, this dash cam offers high-quality video recording and advanced features to enhance your driving safety.

## COMPATIBILITY

This Fitcamx dash cam is compatible with the following Mazda vehicle models:

- Mazda CX-30 (2020-2023)
- Mazda MX-30 EV (2022-2023)

This specific model is designed for vehicles **with a sunroof**. Please confirm your vehicle's configuration before installation.

To identify the correct model for your vehicle, observe the area around your rearview mirror.

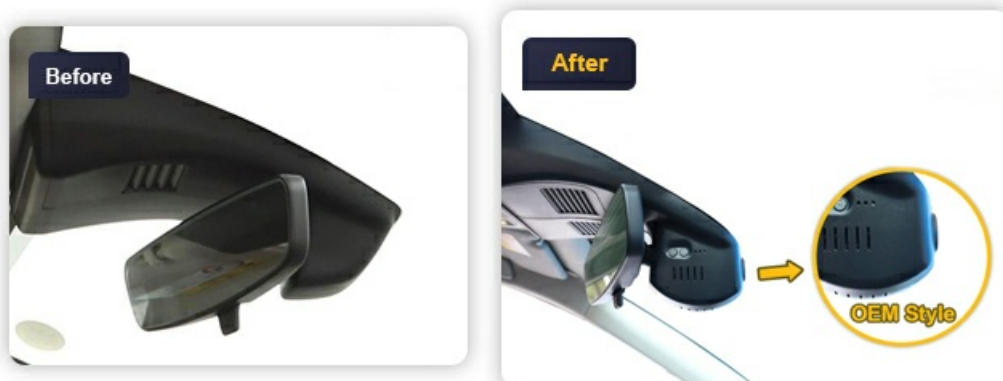


Image: Comparison of two dash cam models, highlighting the presence or absence of vent slots to help identify the correct

fit for your vehicle.

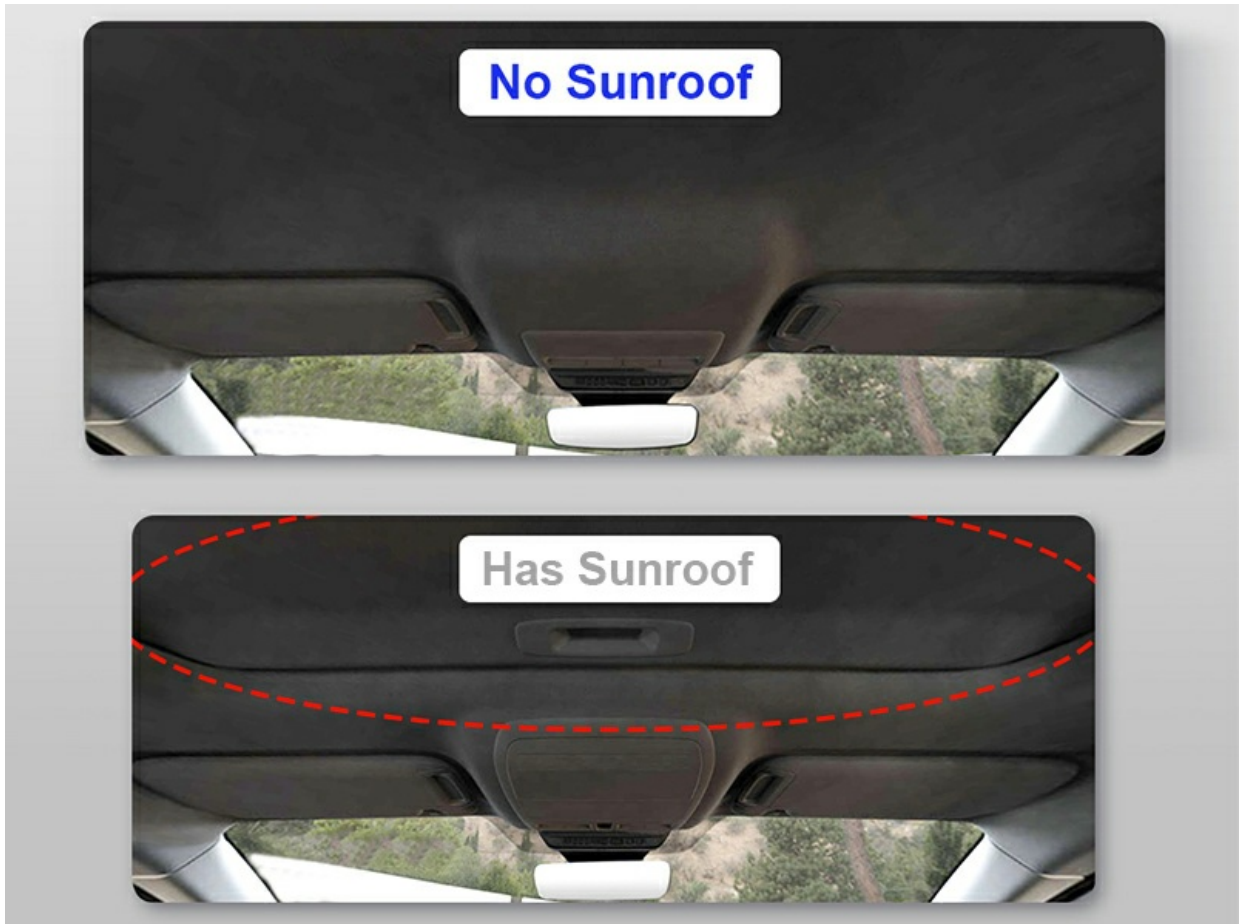


Image: Visual guide to distinguish between Mazda models with and without a sunroof, crucial for selecting the correct dash cam variant.

## PACKAGE CONTENTS

The following items are included in your Fitcamx 4K Dash Cam package:

- Front Camera (4K)
- 64GB MicroSD Card
- Y-Cable
- Card Reader
- Pry Tool
- User Manual

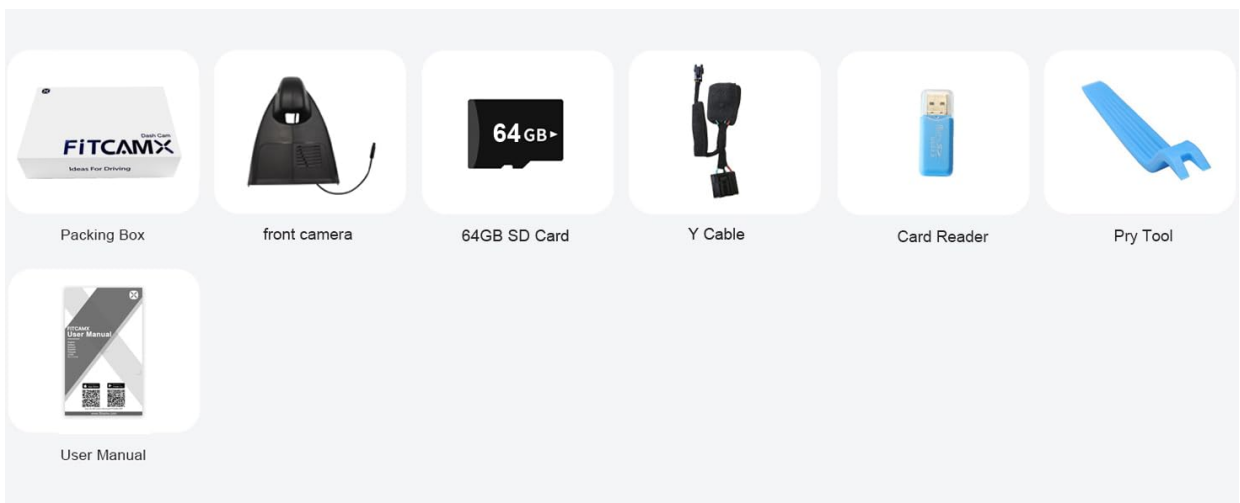


Image: All items included in the Fitcamx dash cam package.

## KEY FEATURES

---

- **UHD 2160P Video Quality:** Records clear 4K video at 30fps with f/1.6 aperture and CMOS sensor for detailed footage, including superior night vision with WDR technology.
- **Integrated OEM Look:** Designed to blend seamlessly with your vehicle's interior, providing a clean, factory-installed appearance without obstructing the windshield.
- **WiFi Connectivity & APP Control:** Connects to your smartphone via built-in WiFi for real-time video viewing, downloading, and transferring footage using the Fitcamx App.
- **Loop Recording:** Automatically overwrites the oldest footage when the storage card is full, ensuring continuous recording. Supports up to 256GB MicroSD card.
- **G-Sensor & Parking Mode:** Detects sudden collisions and automatically saves/locks emergency video clips. The parking sensor provides an additional layer of security when the vehicle is parked.



Image: Overview of the dash cam's main features.

## INSTALLATION GUIDE

---

The Fitcamx dash cam is designed for a straightforward installation process, integrating directly into your vehicle's existing power source (sunroof plug for this model).

### Step-by-Step Installation (Mazda CX-30/MX-30 EV with Sunroof)

Video: Detailed installation guide for the Fitcamx dash cam in compatible Mazda vehicles.

1. **Prepare the Dash Cam:** Carefully separate the dash cam housing components using the provided pry tool.
2. **Remove Overhead Console:** Use the pry tool to carefully detach the overhead console cover near the rearview mirror. This will expose the wiring for the sunroof.



Image: Step-by-step visual instructions for installing the dash cam by connecting to the sunroof power.

3. **Disconnect Original Plug:** Locate the power plug for the sunroof and carefully disconnect it.
4. **Connect Y-Cable:** Connect the provided Y-cable to the vehicle's original sunroof power plug and then connect the other end to the dash cam's power input.
5. **Route Cables:** Neatly tuck all cables to ensure they do not interfere with the console or mirror.
6. **Install Dash Cam:** Securely attach the dash cam to the designated area, ensuring it is firmly in place and does not obstruct your view.
7. **Reinstall Console:** Carefully reattach the overhead console cover, ensuring all clips are properly engaged.



Image: The dash cam installed, showcasing its factory-like appearance.

## OPERATING INSTRUCTIONS

### WiFi Connection & App Usage

The Fitcamx dash cam features built-in WiFi for easy connection to your smartphone via the Fitcamx App.

1. **Download App:** Search for "Fitcamx" in the App Store (iOS) or Google Play Store (Android) and install the application.
2. **Connect to WiFi:** On your smartphone, go to WiFi settings and connect to the dash cam's WiFi network. The network name and password can typically be found in the dash cam's settings or initial setup instructions.
3. **Launch App:** Open the Fitcamx App. You should now be able to view live footage, access recorded videos, and adjust settings.

4. **Troubleshooting Tip:** If you experience issues with live preview, try turning off cellular data or Bluetooth on your phone.



Image: Smartphone displaying live dash cam footage via the Fitcamx app.

## Loop Recording

The dash cam continuously records video. When the storage card is full, the oldest files are automatically overwritten by new recordings.

- Recording time for a 64GB SD card is approximately 5 hours.
- Recording time for a 128GB SD card is approximately 10 hours.
- You can set recording segments to 1, 3, or 5 minutes via the Fitcamx App.

## Automatically Loop Recording

The oldest videos will be overwritten when card storage is full.

Set it at FITCAMX APP: 1/3/5 min option

• Recording time for different SD card storage.

|     |      |
|-----|------|
| 64G | 128G |
| 5H  | 10H  |



Image: Explanation of the automatic loop recording feature.

## G-Sensor (Emergency Recording)

The built-in G-Sensor detects sudden impacts or collisions. When triggered, it automatically locks the current video segment, preventing it from being overwritten by loop recording. These emergency files are stored in a separate, protected folder.



Image: Visual representation of the G-Sensor locking video during an impact.

## Parking Monitoring

For parking monitoring functionality, an additional harness may be required.

- **Fuse Box Cable:** Enables 24-hour recording.
- **OBD Cable:** Enables 24-hour and non-24-hour recording (On-Board Diagnostics).



Image: Illustration of the parking monitoring feature.

## Night Vision

The dash cam utilizes WDR technology, an f/1.6 big aperture, and a CMOS sensor to provide clear video recording even in low-light conditions, ensuring license plates and road signs are visible.



Image: Demonstration of the dash cam's clear night vision.

## SPECIFICATIONS

| Feature              | Detail                      |
|----------------------|-----------------------------|
| Brand                | FITCAMX                     |
| Model Name           | FITCAMX                     |
| Vehicle Service Type | Mazda CX30 2020-2023 & MX30 |

|                             |  |
|-----------------------------|--|
| Video Capture Resolution    | Front 2160P Only                                 |
| Frame Rate                  | 30 fps   |
| Real Angle of View          | 150 Degrees                                      |
| Optical Sensor Technology   | CMOS   |
| Special Features            | Built-In WiFi, FITCAMX APP                       |
| Storage                     | 64GB MicroSD card included, supports up to 256GB |
| Power Source                | Powerline (via sunroof plug)                     |
| Item Weight                 | 2 Pounds   |
| Item Dimensions (D x W x H) | 16"D x 11"W x 4"H                                |

## TROUBLESHOOTING

---

- **Dash Cam Not Powering On:** Ensure the Y-cable is securely connected to both the vehicle's power source and the dash cam. Verify that the vehicle's ignition is on.
- **WiFi Connection Issues:** If the app cannot connect or preview live video, try disabling cellular data or Bluetooth on your smartphone. Ensure you are connected to the correct Fitcamx WiFi network.
- **Video Playback Problems:** Ensure the MicroSD card is properly inserted and not full. Format the card periodically to maintain optimal performance.
- **G-Sensor Not Triggering:** Check the G-Sensor sensitivity settings in the Fitcamx App. Adjust to a higher sensitivity if needed.
- **Parking Mode Not Working:** Confirm if your dash cam model supports parking mode and if the necessary additional harness (Fuse Box or OBD cable) is correctly installed.

For further assistance, please refer to the contact information in the "Warranty & Support" section.

## WARRANTY & SUPPORT

---

Fitcamx is committed to providing high-quality products and excellent customer service.

- **Warranty:** This product comes with a 1-year warranty.
- **After-Sales Support:** We offer lifetime after-sales support. If you encounter any issues or have questions, please do not hesitate to contact us.
- **Customer Service:** 24/7 customer service is available.

# Need Tech Support ?



**24/7**  
Customer Service



**12-Month**  
Warranty



**Lifetime**  
Service

Image: Overview of Fitcamx customer support and warranty information.