

manuals.plus /

› **SUPRENT** /

› SUPRENT Cordless Hair Clippers for Men - Professional Hair Clipper & Trimmer Set User Manual

SUPRENT 5U1HC2SF6P

# SUPRENT Cordless Hair Clippers & Trimmer Set User Manual

Model: 5U1HC226BX

## PRODUCT OVERVIEW

The SUPRENT Cordless Hair Clippers and Trimmer Set is designed for both professional and home use, offering precision and power for various grooming needs. This comprehensive kit includes a main clipper and a detailing trimmer, both equipped with advanced features for a superior cutting experience.



Image: The complete SUPRENT Cordless Hair Clippers and Trimmer Set, including the main clipper, detailing trimmer, various guide combs, charging cables, and cleaning accessories.

Key features include a powerful 6000rpm motor for efficient cutting, self-sharpening titanium blades for durability and sharpness, and an ergonomic design for comfortable handling. The integrated LED display provides real-time information on power levels and charging status.



Image: A close-up view of the SUPRENT clipper highlighting its powerful motor and titanium-coated blades, emphasizing high performance and effortless cutting without pulling hair.

## WHAT'S INCLUDED

Your SUPRENT Cordless Hair Clippers and Trimmer Set comes with the following components:

- 1 x SUPRENT Cordless Hair Clipper
- 1 x SUPRENT Cordless Hair Trimmer (T-shaped)
- 6 x Clipper Guide Combs (various sizes)
- 3 x Trimmer Attachment Combs
- 1 x USB-C Charging Cable
- 1 x Cleaning Brush
- 1 x Lubricating Oil Bottle
- User Manual



Image: The SUPRENT Hair Clipper and Trimmer Kit displayed with all included accessories, such as guide combs, charging cables, and maintenance tools.

## SETUP

---

### Charging the Clippers/Trimmer

Before first use, fully charge both the hair clipper and trimmer. Connect the provided USB-C charging cable to the device and a compatible USB power adapter (not included). The LED display will indicate the charging status and battery percentage. A full charge takes approximately 3 hours and provides up to 180 minutes of cordless runtime.

# CORDLESS HAIR CLIPPER & TRIMMER SET

Fast Charging with  
**USB-C** Cable



**3** Charging Time  
hrs



**180** Running Time  
mins

Image: The SUPRENT Cordless Hair Clipper and Trimmer are shown connected to USB-C charging cables, illustrating the fast charging capability.

## Attaching Guide Combs

To achieve desired hair lengths, select the appropriate guide comb. Align the comb with the clipper or trimmer blade and push firmly until it clicks into place. Ensure the comb is securely attached before use.

# SHARP T BLADES

## & ADJUSTABLE TAPER LEVER

Achieve Your Desired  
Hairstyle with Ease



Image: The SUPRENT clipper is displayed with various guide comb sizes (3mm, 6mm, 10mm, 13mm, 16mm, 19mm) and its adjustable taper lever, demonstrating its versatility for different hairstyles.

## OPERATING INSTRUCTIONS

### General Hair Cutting

Turn on the clipper using the power button. For best results, always cut against the direction of hair growth. Use smooth, overlapping strokes. Start with a longer guide comb and gradually switch to shorter ones if a closer cut is desired.

### Using the Taper Lever

The main clipper features an adjustable taper lever (0.5mm to 2.5mm) for precise blending and fading. Adjust the lever to fine-tune the cutting length without changing guide combs. Move the lever up for a shorter cut and down for a longer cut.

### Trimming and Detailing

The T-shaped trimmer is ideal for intricate detailing, outlining necklines, sideburns, and beard shaping. Its factory-calibrated zero-gapped design (close to 0.1mm) allows for extremely close cuts. Use without an

attachment comb for the closest trim, or with the smaller combs for beard length maintenance.



Image: A man receiving a haircut, demonstrating the SUPRENT clipper's ability for carving and styling intricate designs.

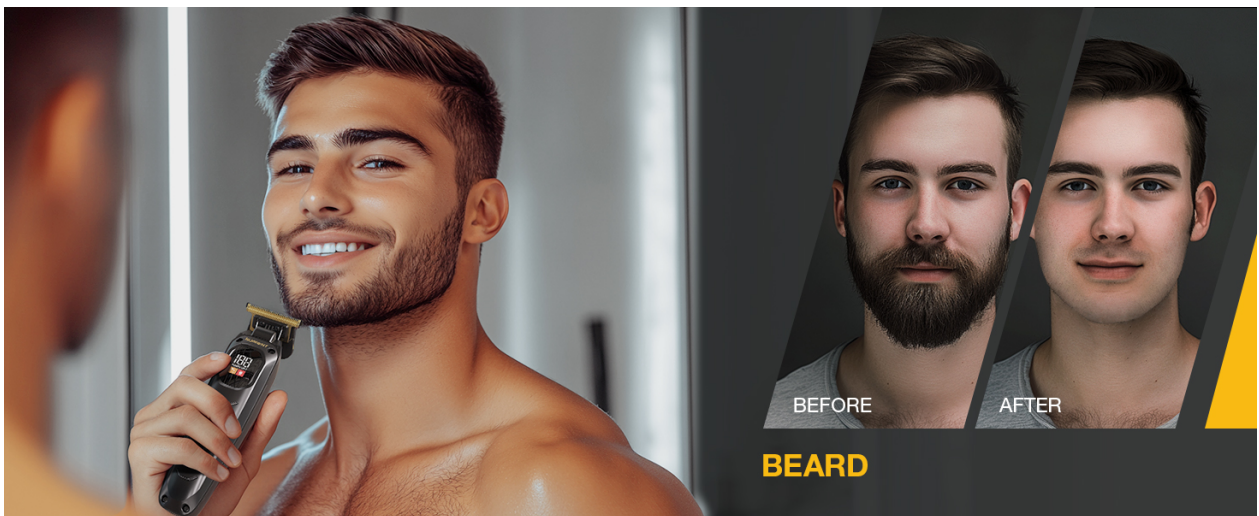


Image: A man using the SUPRENT trimmer to shape his beard, with before and after images illustrating the effectiveness of the beard trimming function.

## MAINTENANCE

---

### Cleaning the Blades

After each use, turn off the device and remove any attached guide combs. Use the provided cleaning brush to remove loose hairs from the blades and the clipper/trimmer body. For a more thorough cleaning, the blades can be carefully detached and rinsed under running water. Ensure blades are completely dry before reattaching.

### Oiling the Blades

Regular oiling is crucial for maintaining blade performance and longevity. After cleaning and drying the blades, apply 1-2 drops of the included lubricating oil across the top of the blades. Turn on the device for a few seconds to allow the oil to distribute evenly. Wipe off any excess oil with a soft cloth.

## TROUBLESHOOTING

---

Problem	Possible Cause	Solution
Clipper/Trimmer not turning on	Low battery; Device not charged	Charge the device fully using the provided USB-C cable. Check the LED display for battery level.
Blades pulling hair or cutting poorly	Blades are dull or dirty; Blades need oiling; Hair buildup	Clean the blades thoroughly and oil them as per maintenance instructions. Ensure no hair is trapped.
Battery not holding charge	Battery degradation over time; Improper charging	Ensure you are using a compatible USB power adapter. If the issue persists, contact customer support.
Excessive noise or vibration	Blades not properly aligned or oiled	Clean and oil the blades. Check if the blades are securely attached and aligned.

## SPECIFICATIONS

- **Model Number:** 5U1HC226BX
- **Power Source:** Battery Powered
- **Motor Speed:** 6000rpm
- **Blade Material:** Titanium-coated
- **Clipper Adjustable Blade:** 0.5mm - 2.5mm
- **Trimmer Blade:** Factory-calibrated zero gapped (approx. 0.1mm)
- **Charging Time:** Approx. 3 hours
- **Runtime:** Up to 180 minutes (3 hours)
- **Charging Interface:** USB-C
- **Color:** Black
- **Dimensions:** 8.78 x 5.91 x 3.23 inches (Package)
- **Weight:** 1.83 Pounds (Package)

## WARRANTY AND SUPPORT

SUPRENT products are manufactured with high-quality standards. For any issues or inquiries regarding your product, please refer to the warranty information provided with your purchase or contact SUPRENT customer support. Keep your purchase receipt for warranty claims.



For further assistance, please visit the official SUPRENT store or contact their customer service department.

## Related Documents - 5U1HC2SF6P



### [Suprent BT575BX Beard Trimmer User Manual](#)

User manual for the Suprent BT575BX Beard Trimmer, detailing specifications, basic parameters, product description, and warranty information.

	<p><a href="#">SUPRENT BC-VD-NH515 User Manual - Operation, Safety, and Specifications</a></p> <p>Comprehensive user manual for the SUPRENT BC-VD-NH515, providing detailed instructions on operation, safety precautions, maintenance, troubleshooting, and product specifications.</p>
	<p><a href="#">SUPRENT PRO ZEUS Hair Clipper Kit HC735BX User Manual</a></p> <p>User manual for the SUPRENT PRO ZEUS Hair Clipper Kit HC735BX, detailing specifications, basic parameters, product description, usage instructions, and warranty information.</p>