

T3 Aire 360 Multi-Styler & Blowout System (Model 600692-UL-10)

T3 Aire 360 Multi-Styler & Blowout System Instruction Manual

Brand: T3 | Model: Aire 360 Multi-Styler & Blowout System (600692-UL-10)

INTRODUCTION

The T3 Aire 360 Multi-Styler & Blowout System is an advanced hair styling tool designed to deliver bouncy blowouts and lasting curls with minimal heat damage. Featuring high-performance heat and ceramic attachments, this system utilizes T3 Aire 360 Technology to optimize airflow and provide efficient, healthy styling. This manual provides essential information for the safe and effective use of your T3 Aire 360 system.

WHAT'S INCLUDED

Your T3 Aire 360 Multi-Styler & Blowout System comes with the following components:

What's included:

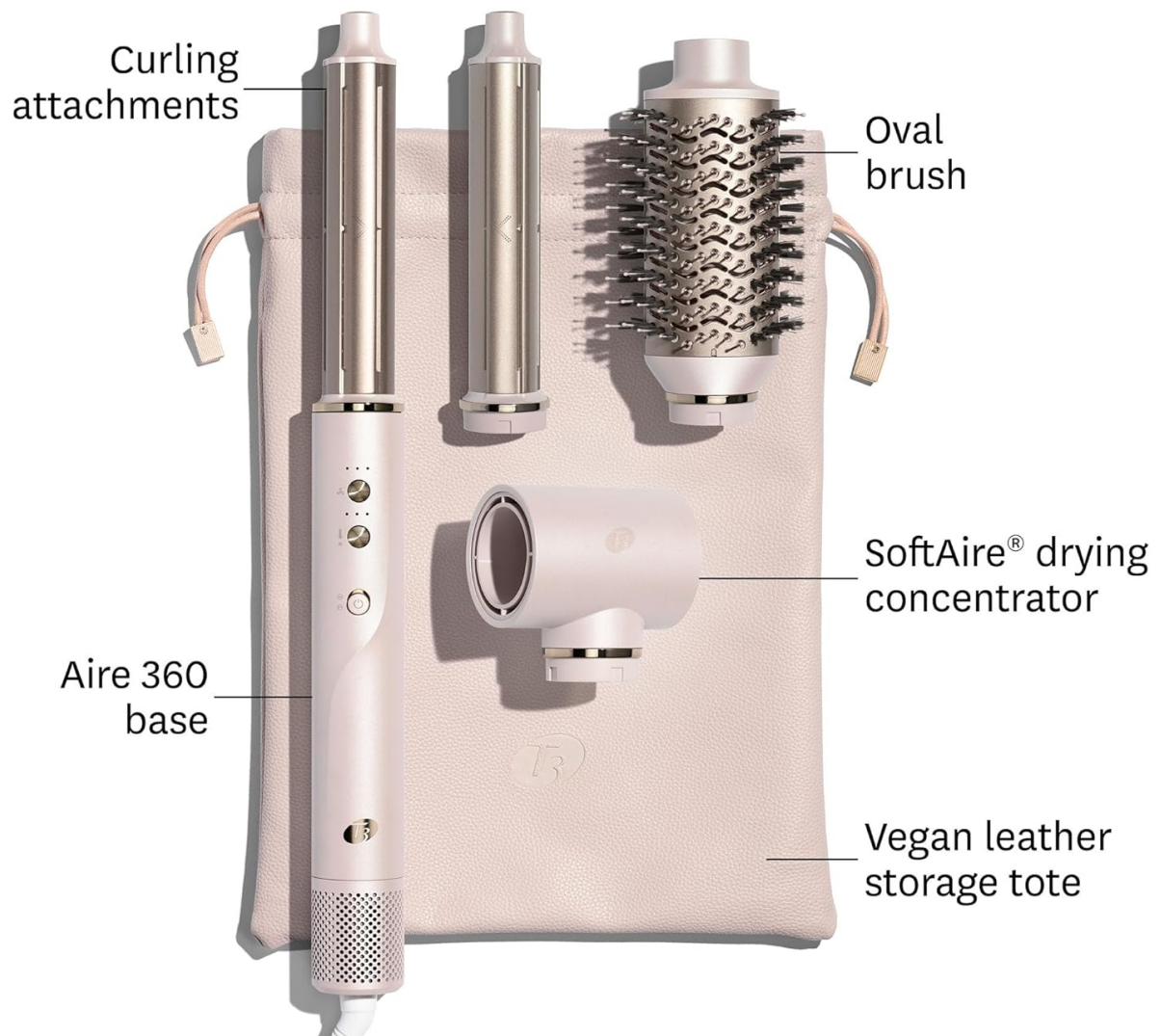


Image: All components of the T3 Aire 360 Multi-Styler & Blowout System, including the main base, two curling attachments, an oval brush, a SoftAire drying concentrator, and the vegan leather storage tote.

- **Aire 360 Base:** The main styling tool handle with controls for heat and speed.
- **Ceramic Curling Attachments:** Two extra-long ceramic barrels for creating lasting curls.
- **Oval Brush:** Designed to lift at the roots, create waves, or smooth hair.
- **SoftAire Drying Concentrator:** For rapid drying that helps protect hair's natural moisture.
- **Vegan Leather Storage Tote:** For convenient storage and travel.

IMPORTANT SAFETY INSTRUCTIONS

When using electrical appliances, especially when children are present, basic safety precautions should always be followed, including the following:

- **DANGER:** Keep away from water. Do not use while bathing or in a shower.
- Always unplug the appliance immediately after use.
- Do not place or store appliance where it can fall or be pulled into a tub or sink.

- Do not place in or drop into water or other liquid.
- If an appliance falls into water, unplug it immediately. Do not reach into the water.
- **WARNING:** To reduce the risk of burns, electrocution, fire, or injury to persons:
- An appliance should never be left unattended when plugged in.
- Close supervision is necessary when this appliance is used by, on, or near children or individuals with certain disabilities.
- Use this appliance only for its intended use as described in this manual. Do not use attachments not recommended by the manufacturer.
- Never operate this appliance if it has a damaged cord or plug, if it is not working properly, or if it has been dropped or damaged, or dropped into water.
- Keep the cord away from heated surfaces. Do not wrap the cord around the appliance.
- Never block the air openings of the appliance or place it on a soft surface, such as a bed or couch, where the air openings may be blocked. Keep the air openings free of lint, hair, and the like.
- Never use while sleeping.
- Never drop or insert any object into any opening.
- Do not use outdoors or operate where aerosol (spray) products are being used or where oxygen is being administered.
- Do not use an extension cord with this appliance.
- Do not direct hot air towards eyes or other heat-sensitive areas.
- Attachments may be hot during use. Allow them to cool before handling.
- Do not place appliance on any surface while it is operating.

SETUP

To prepare your T3 Aire 360 Multi-Styler for use:

1. Ensure the device is unplugged before attaching or detaching any accessories.
2. Align the desired attachment (drying concentrator, oval brush, or curling barrel) with the top of the Aire 360 base.
3. Push the attachment firmly onto the base until it clicks securely into place.
4. To remove an attachment, press the release button (if applicable) and gently pull the attachment off. Allow attachments to cool completely before removal if they have been heated.

OPERATING INSTRUCTIONS

Familiarize yourself with the controls and functions of your T3 Aire 360 Multi-Styler.

Power and Temperature Settings

- **Power Button:** Press to turn the device ON/OFF.
- **Heat Settings:** Select from multiple heat levels to suit your hair type and desired style. Lower heat settings are recommended for fine or damaged hair, while higher settings are suitable for thick or coarse hair.
- **Speed Settings:** Adjust the airflow speed for drying and styling.
- **Cool Shot Button:** Press and hold to deliver a burst of cool air, which helps to set your style for long-lasting

results.

Using the SoftAire Drying Concentrator

The SoftAire drying concentrator is designed for rapid drying while protecting your hair's natural moisture.

SoftAire[®] drying concentrator
softens airflow for rapid drying that helps
protect hair's natural moisture.



Image: The SoftAire drying concentrator attachment, designed to soften airflow for rapid drying.

1. Attach the SoftAire drying concentrator to the Aire 360 base.
2. Select your desired heat and speed settings.
3. Direct the airflow towards your hair, moving the concentrator continuously to avoid concentrating heat in one area.
4. Use to pre-dry hair until it is slightly damp before styling with other attachments.

Using the Oval Brush

The oval brush is shaped to provide lift at the roots, create gentle waves and bends, or achieve smooth, sleek looks.

Before



Curly / Medium-Length Hair

After



Blowout curls styled with
curling attachments

Image: The oval brush attachment, featuring SmoothGrip bristles and a CeraGloss ceramic surface.

1. Attach the oval brush to the Aire 360 base.
2. Ensure hair is damp, not soaking wet.
3. Section your hair. Place the brush near the roots and glide it down through the hair, rotating slightly to create tension and shape.
4. For volume, lift hair at the roots with the brush and direct airflow upwards.

Using the Ceramic Curling Attachments

The extra-long ceramic curling attachments harness high-performance heat to deliver long-lasting curls with zero heat damage.

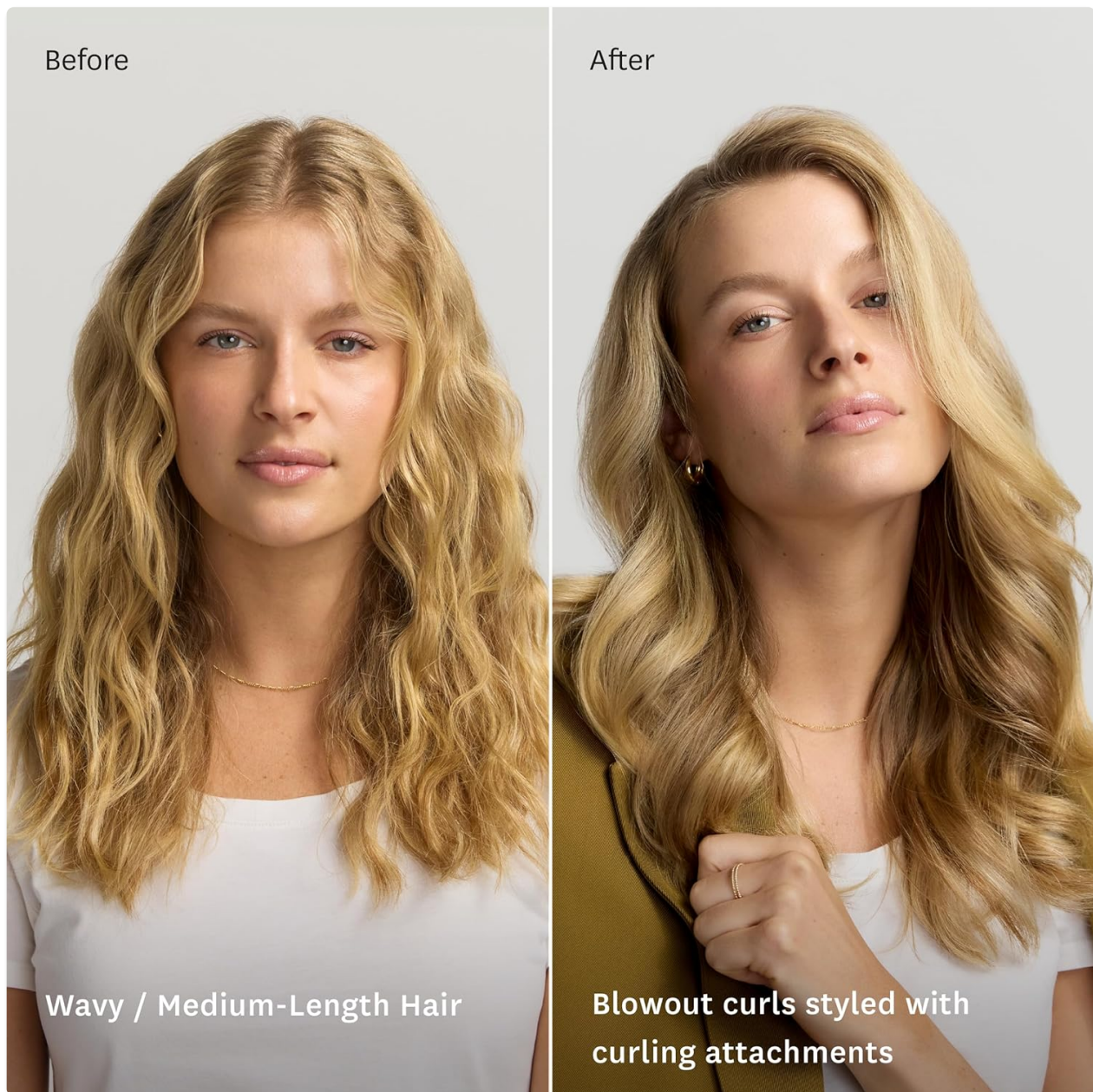


Image: The extra-long ceramic curling attachments, designed for creating lasting curls.

1. Attach the desired curling barrel to the Aire 360 base.
2. Ensure hair is dry or slightly damp.
3. Take a small section of hair (1-2 inches).
4. Wrap the hair around the barrel, holding for 5-10 seconds. The optimized airflow will wrap hair effortlessly.
5. Release the curl and allow it to cool before touching for best results.

Styling Guides

How to Style Blowout Curls: Straight / Long Hair

AIRE 360 | HOW TO STYLE BLOWOUT CURLS

Straight / Long Hair



Step 1: Pre-dry with SoftAire® drying concentrator until hair is slightly damp.



Step 2: Glide the oval brush through 3 – 4” sections to smooth & create volume.



Step 3: Use curling attachments to style in 1 – 2” sections. Hold section for 5 – 10 seconds.



Step 4: Finish with the cool shot to set your style.

Image: Step-by-step instructions for achieving blowout curls on straight, long hair.

1. **Step 1:** Pre-dry with the SoftAire drying concentrator until hair is slightly damp.
2. **Step 2:** Glide the oval brush through 3-4 inch sections to smooth and create volume.
3. **Step 3:** Use curling attachments to style in 1-2 inch sections. Hold each section for 5-10 seconds.
4. **Step 4:** Finish with the cool shot to set your style.

How to Style Blowout Curls: Curly / Medium-Length Hair

AIRE 360 | HOW TO STYLE BLOWOUT CURLS

Curly / Medium-Length Hair



Step 1: Start with towel-dried hair. Pull the oval brush through 2 – 3” sections to stretch curls.



Step 2: Use a flat iron* as needed to further straighten or smooth.



Step 3: Use curling attachments to style in 1 – 2” sections. Hold section for 5 – 10 seconds.



Step 4: Finish with the cool shot to set your style.

*Singlepass Smooth X sold separately

Image: Step-by-step instructions for achieving blowout curls on curly, medium-length hair.

1. **Step 1:** Start with towel-dried hair. Pull the oval brush through 2-3 inch sections to stretch curls.
2. **Step 2:** Use a flat iron* as needed to further straighten or smooth. (*Flat iron sold separately)
3. **Step 3:** Use curling attachments to style in 1-2 inch sections. Hold each section for 5-10 seconds.
4. **Step 4:** Finish with the cool shot to set your style.

How to Style Blowout Curls: Wavy / Medium-Length Hair

AIRE 360 | HOW TO STYLE BLOWOUT CURLS

Wavy / Medium-Length Hair



Step 1: Pre-dry with the SoftAire® drying concentrator until hair is slightly damp.



Step 2: Glide the oval brush through 3 – 4” sections to smooth & create volume.



Step 3: Use curling attachments to style in 1 – 2” sections. Hold section for 5 – 10 seconds.



Step 4: Finish with the cool shot to set your style.

Image: Step-by-step instructions for achieving blowout curls on wavy, medium-length hair.

1. **Step 1:** Pre-dry with the SoftAire drying concentrator until hair is slightly damp.
2. **Step 2:** Glide the oval brush through 3-4 inch sections to smooth and create volume.
3. **Step 3:** Use curling attachments to style in 1-2 inch sections. Hold each section for 5-10 seconds.
4. **Step 4:** Finish with the cool shot to set your style.

PRODUCT FEATURES AND TECHNOLOGY

T3 Aire 360 Technology

The T3 Aire 360 Technology is at the core of this system, providing superior airflow that wraps hair effortlessly for styling. This technology, combined with CeraGloss ceramic surfaces, ensures high-performance heat for lasting results.

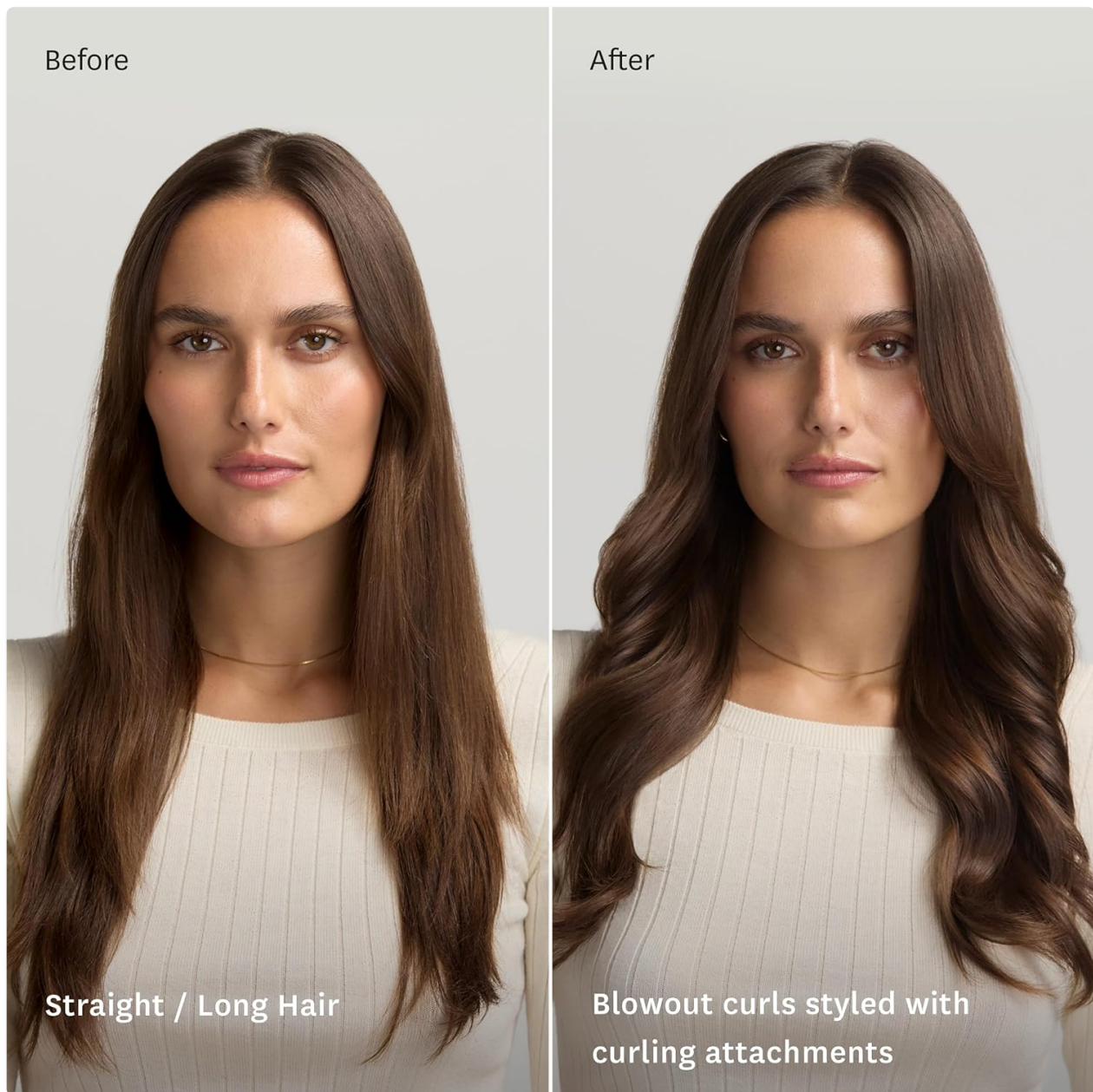


Image: Illustration of T3 Aire 360 Technology, showing optimized airflow and CeraGloss ceramic surface.

Extra-Long Ceramic Attachments

The system includes first-ever extra-long ceramic attachments designed to style hair with zero heat damage. These attachments ensure even heat distribution and smooth styling.

First-ever, extra-long ceramic attachments.



Zero heat
damage.

Image: A user demonstrating the extra-long ceramic curling attachment.

MAINTENANCE

Proper maintenance ensures the longevity and optimal performance of your T3 Aire 360 Multi-Styler.

- **Cleaning:** Ensure the device is unplugged and completely cool before cleaning. Wipe the exterior of the base and attachments with a soft, damp cloth. Do not use abrasive cleaners or immerse the device in water. Regularly clean the air intake filter at the bottom of the base to prevent lint and hair buildup, which can affect performance.
- **Storage:** Store the device and its attachments in the provided vegan leather storage tote in a cool, dry place. Do not wrap the power cord around the appliance, as this can damage the cord.

TROUBLESHOOTING

If you encounter any issues with your T3 Aire 360 Multi-Styler, refer to the following common problems and solutions:

Problem	Possible Cause	Solution
Device does not turn on.	Not plugged in correctly; power outlet issue; internal fault.	Ensure the power cord is fully inserted into a working electrical outlet. Check the circuit breaker. If the issue persists, contact customer support.
Attachments are not heating or styling effectively.	Incorrect heat setting; attachment not securely connected; hair section too large.	Verify the heat setting is appropriate for your hair type. Ensure the attachment is clicked securely into place. Use smaller hair sections (1-2 inches) for curling.
Reduced airflow or unusual noise.	Air intake filter is blocked with lint or hair.	Unplug the device and allow it to cool. Clean the air intake filter at the bottom of the base.
Curls do not hold.	Hair not fully dry; sections too large; not using cool shot.	Ensure hair is dry or slightly damp before curling. Use smaller sections. Always use the cool shot function to set curls after styling.

For issues not listed here, or if troubleshooting steps do not resolve the problem, please contact T3 customer support.

SPECIFICATIONS

Feature	Detail
Product Dimensions	3.8 x 2.96 x 18 inches
Weight	2.5 Pounds
Item Model Number	600692-UL-10
UPC	883349006779
Material	Ceramic, Plastic
Wattage	1800 watts
Power Source	Corded Electric

WARRANTY AND SUPPORT

Your T3 Aire 360 Multi-Styler & Blowout System is covered by a manufacturer's warranty. Please refer to the warranty card included with your product for specific terms and conditions. For technical support, replacement parts, or warranty claims, please visit the official T3 website or contact their customer service department.

Note: No official product videos were available in the provided data for embedding.

