

## Manuals+

[Q & A](#) | [Deep Search](#) | [Upload](#)

### Manuals.plus /

- > [MOFII](#) /
- > MOFII Wireless Keyboard Mouse Combo (Model 693) User Manual

## MOFII 693

# MOFII Wireless Keyboard Mouse Combo User Manual

Model: 693

## INTRODUCTION

This manual provides instructions for the MOFII Wireless Keyboard Mouse Combo, Model 693. This combo features a full-size 104-key keyboard with round, retro-style keycaps and a matching wireless mouse. It utilizes a 2.4G wireless connection via a single USB receiver, offering compatibility with various operating systems and devices.



Image: MOFII Wireless Keyboard Mouse Combo in blue, showing the keyboard, mouse, and USB receiver.

## PACKAGE CONTENTS

Verify that all items are present in the package:

- 1 x Wireless Keyboard
- 1 x Wireless Mouse

- 2 x AA Batteries (included)
- 1 x Instruction Manual
- 1 x USB Nano Receiver



**Exquisite Package:**  
 1\*Wireless Keyboard  
 1\*Wireless Mouse  
 2\*AA Battery(included)  
 1\*Manual  
 1\*USB Nano receiver

Image: Contents of the MOFII combo package, including keyboard, mouse, batteries, manual, and USB receiver.

## SETUP

### 1. Battery Installation

1. Locate the battery compartments on the underside of both the keyboard and the mouse.
2. Open the battery covers.
3. Insert one AA battery into the keyboard and one AA battery into the mouse, ensuring correct polarity (+/-).
4. Close the battery covers.

### 2. USB Receiver Connection

1. Locate the USB nano receiver, typically stored in the mouse's battery compartment.
2. Plug the USB nano receiver into an available USB port on your computer, laptop, or compatible device.
3. The system should automatically detect and install the necessary drivers. No additional software installation is required.
4. Turn on the power switches for both the keyboard and mouse. These are usually located on the underside of each device.
5. The keyboard and mouse should now be connected and ready for use.



Image: Visual guide showing battery insertion and USB receiver connection steps.



Image: Close-up of the USB nano receiver, indicating it connects both devices.

## OPERATING INSTRUCTIONS

### 2.4G Wireless Connection

The keyboard and mouse utilize a 2.4G wireless connection for stable and lag-free operation within a range of up to 10 meters. The single USB nano receiver manages both devices.

### Multimedia Hot Keys

The keyboard includes 13 multimedia hot keys for quick access to various functions. To activate these functions, press the **Fn** key simultaneously with the corresponding F-key (F1-F12) or other designated keys.

- **Fn + ESC:** Player
- **Fn + F1:** Play/Pause
- **Fn + F2:** Previous song
- **Fn + F3:** Next song
- **Fn + F4:** Volume up
- **Fn + F5:** Volume down

- **Fn + F6:** Mute
- **Fn + F7:** Home
- **Fn + F8:** Search
- **Fn + F9:** Bookmarks
- **Fn + F10:** Mail
- **Fn + F11:** Lock Keyboard
- **Fn + F12:** My Computer

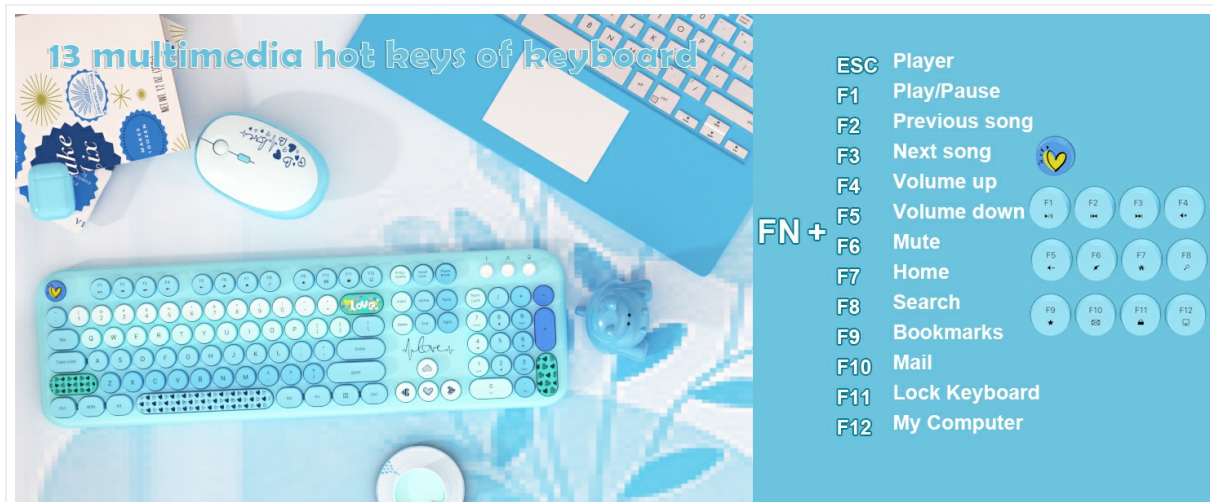


Image: Illustration detailing the function of each multimedia hot key combination.

## Auto Sleep Mode

Both the keyboard and mouse are equipped with an auto sleep mode to conserve battery power. After a period of inactivity (approximately 30 minutes for the keyboard, 3 seconds for the mouse), the devices will enter sleep mode. To reactivate, simply press any key on the keyboard or double-click any button on the mouse.

# AUTO SLEEP & ENERGY SAVING

Work with a lower current while not in use, better saving energy and enabling a longer battery life.

\*Press any key to reactivate the keyboard or mouse immediately



Image: Diagram explaining auto-sleep functionality and battery saving.

## Ergonomic Design

The keyboard features a tilt angle for a comfortable typing position. The mouse is designed with a contoured shape and a sweat-resistant finish for extended comfortable use.

# Foldable Stands Silicone Non slip

Pick Comfortable Typing Angle  
2 Adjustable Legs -Natural Tilt /15° Tilt

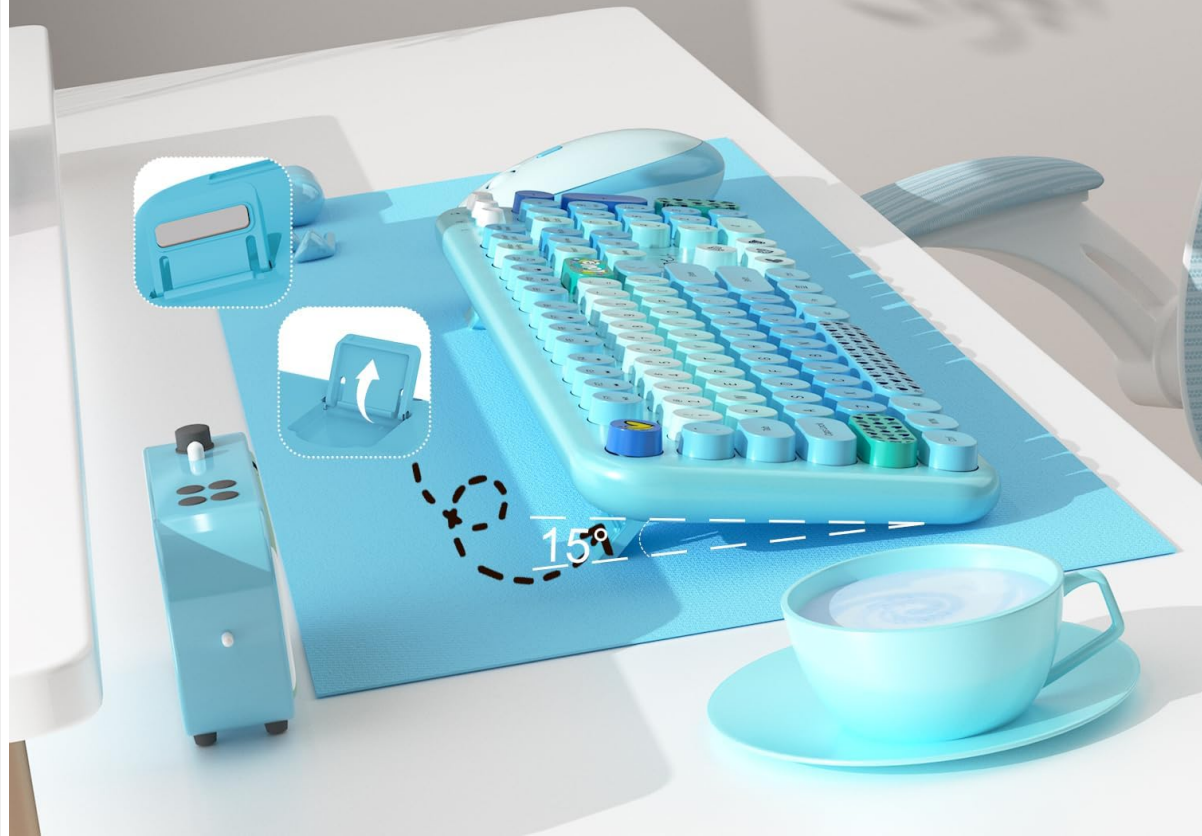


Image: The keyboard showing its foldable stands for adjustable tilt angles (Natural Tilt / 15° Tilt).

## Retro Floating Round Keycaps

The keyboard features independent, floating round keycaps inspired by retro typewriters. These keycaps are designed for comfortable finger positioning and responsive typing.

# Removable Floating Keycaps



Independent Keys  
& Fits Fingertips



Responsive  
Typing

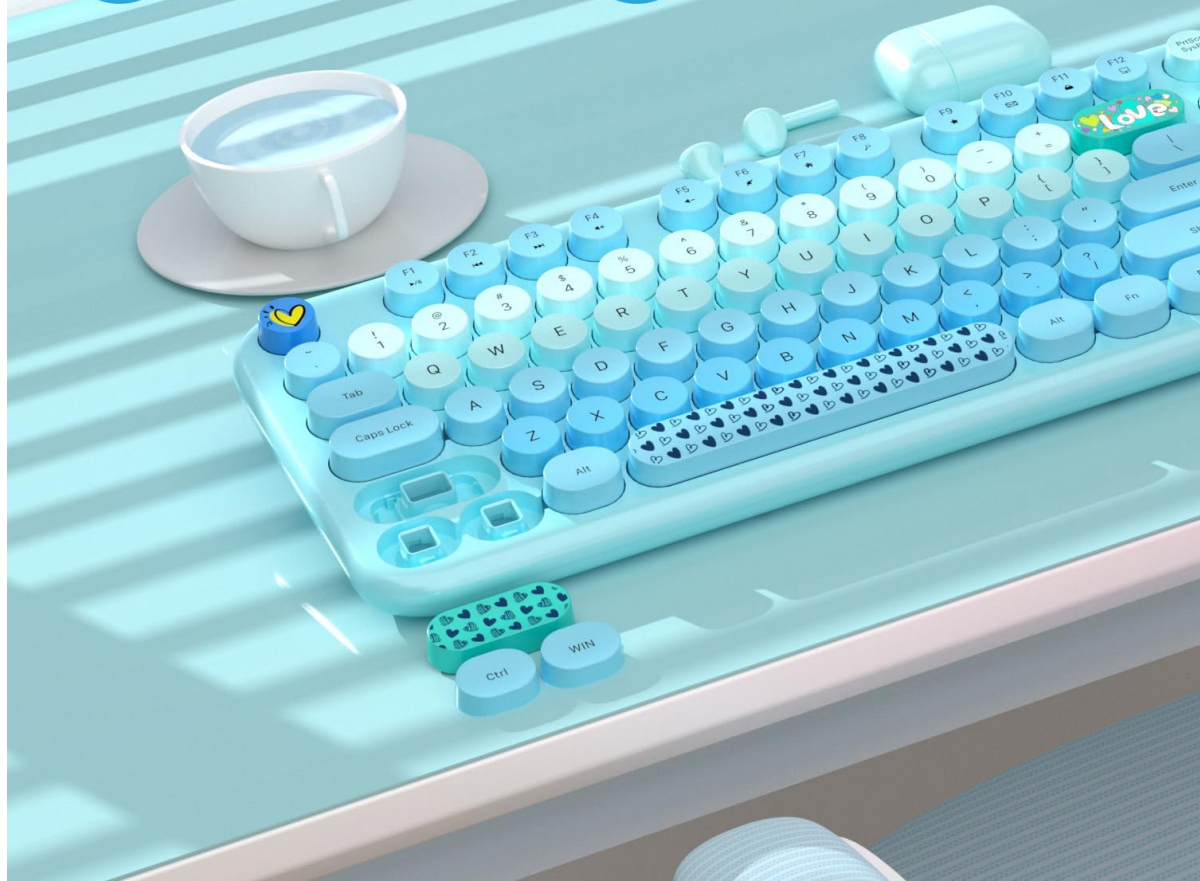


Image: Close-up of the keyboard highlighting the removable, floating round keycaps.

## MAINTENANCE

To ensure the longevity and optimal performance of your MOFII Wireless Keyboard Mouse Combo, follow these maintenance guidelines:

- **Cleaning:** Use a soft, dry cloth to clean the surfaces of the keyboard and mouse. For stubborn dirt, a slightly damp cloth with mild soap can be used, ensuring no liquid enters the devices.
- **Keycap Cleaning:** The round keycaps can be carefully removed for deeper cleaning. Use a keycap puller (not included) or gently pry them off. Clean the keycaps and the keyboard base, then reattach the keycaps firmly.
- **Battery Replacement:** Replace batteries when performance degrades or the low power indicator light illuminates. Always use new AA batteries and dispose of old batteries responsibly.
- **Storage:** When not in use for extended periods, turn off the power switches on both devices and store them in a dry, cool environment.
- **Avoid Extreme Conditions:** Do not expose the devices to extreme temperatures, direct sunlight, or excessive moisture.

## TROUBLESHOOTING

If you encounter issues with your MOFII Wireless Keyboard Mouse Combo, refer to the following common solutions:

- **No Connection/Unresponsive Devices:**

- Ensure the USB nano receiver is securely plugged into a working USB port.
- Check that both the keyboard and mouse power switches are in the 'ON' position.
- Replace the batteries in both devices with fresh AA batteries.
- Try plugging the USB receiver into a different USB port on your device.
- Restart your computer or device.

- **Lag or Intermittent Connection:**

- Ensure the devices are within the 10-meter operating range of the USB receiver.
- Minimize obstructions between the devices and the receiver (e.g., large metal objects).
- Avoid using the combo near other strong wireless signals or devices that may cause interference.

- **Mouse Cursor Movement Issues:**

- Ensure the mouse sensor is clean and free from debris.
- Use the mouse on a suitable surface (e.g., a mouse pad).
- The mouse has multiple DPI levels (up to 1600 DPI). If movement is too fast or slow, adjust your system's mouse sensitivity settings.

- **Keys Not Responding:**

- Check for debris under the keycaps.
- Ensure the keyboard is not in sleep mode. Press any key to wake it.

## SPECIFICATIONS

Feature	Detail
Model Number	693
Connectivity Technology	2.4G Wireless (USB Receiver)
Keyboard Layout	104 Full-Size Keys
Keycap Style	Retro Floating Round Keycaps
Multimedia Keys	13 Hot Keys (Fn combinations)
Mouse DPI	1600 DPI
Keyboard Dimensions (L x W x H)	447mm x 134mm x 20mm (17.59" x 5.27" x 0.78")
Mouse Dimensions (L x W)	11.5cm x 7cm (4.52" x 2.75")
Item Weight	Approximately 1.98 pounds (combined)
Battery Type	1 x AA for Keyboard, 1 x AA for Mouse (2 AA batteries included)
Compatibility	Windows 2000 / ME / XP / 7 / 8 / 10, VISTA, Mac, Chrome-book, PC, Laptop, Tablet, Computer

Feature	Detail
Special Features	Ergonomic design, Auto Sleep Mode, Silent Mouse Clicks

# 104 Keys Full Size Wireless Keyboard Mouse Set

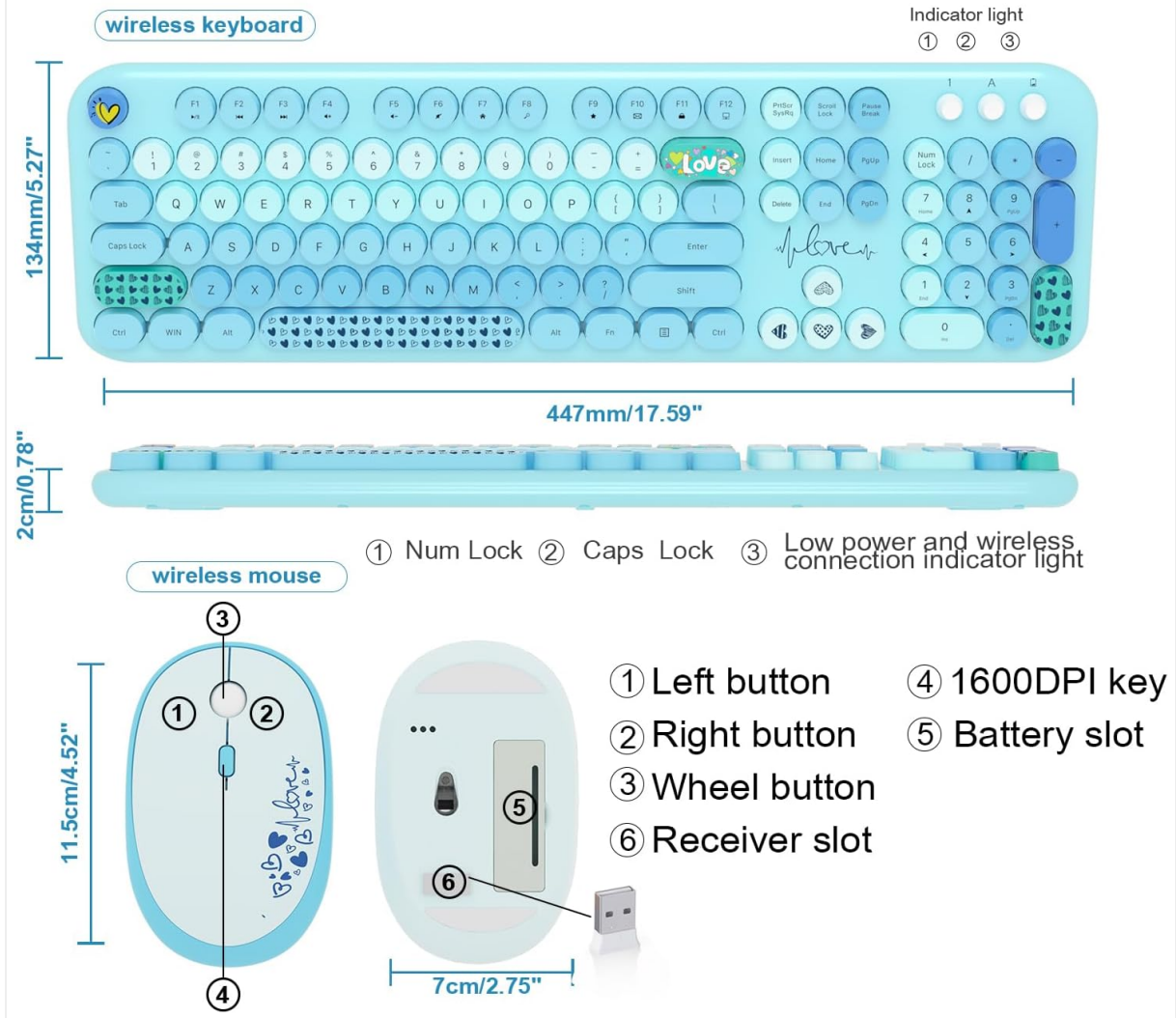


Image: Detailed dimensions and feature callouts for the keyboard and mouse.



Image: Visual representation of the wide compatibility with various operating systems including Mac OS, Windows, Chrome OS, and Linux.

## WARRANTY AND SUPPORT

For product support or warranty inquiries, please refer to your purchase documentation or contact the seller directly. If purchased through Amazon, you can typically find support options by following these steps:

1. Go to 'Your Account' and then 'Your Orders'.
2. Find your order item for the MOFII Wireless Keyboard Mouse Combo.
3. Click on 'Get product support' or 'Return or replace items' as needed.

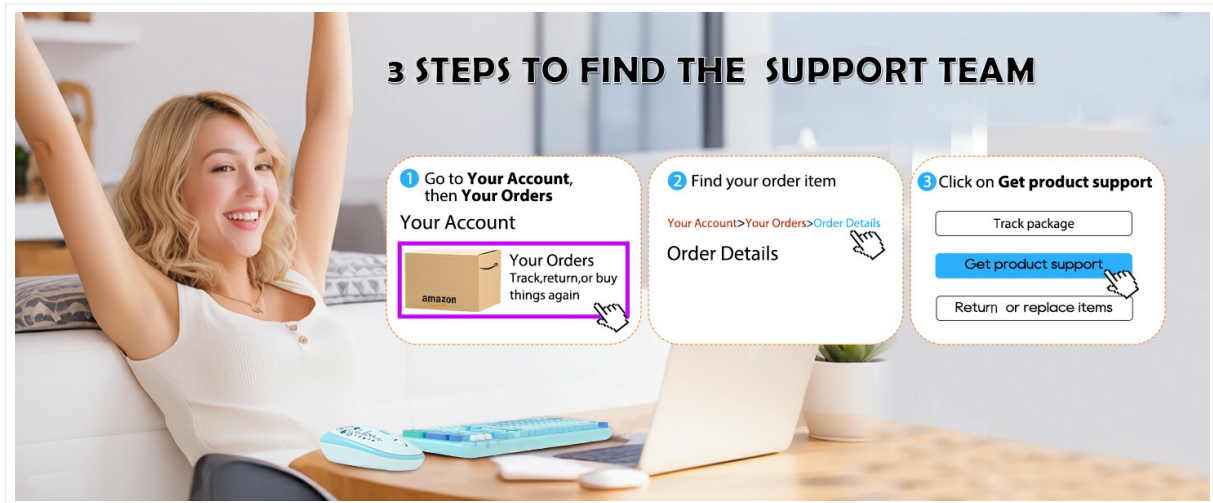


Image: Visual guide on how to access product support via Amazon's order details page.