

Manuals+

[Q & A](#) | [Deep Search](#) | [Upload](#)

manuals.plus /

- › [Runidur](#) /
- › [Runidur 2-in-1 Smoke and CO Detector User Manual](#)

Runidur CS12

Runidur 2-in-1 10 Year Battery Operated Smoke and CO Detector

Model: CS12

PRODUCT OVERVIEW

The Runidur 2-in-1 Smoke and CO Detector provides comprehensive safety for your home. This device integrates both a photoelectric smoke sensor and an electrochemical carbon monoxide (CO) sensor into a single, compact unit. Designed for long-term reliability, it features a built-in 3V CR123A lithium battery, offering a continuous power supply for up to 10 years, eliminating the need for frequent battery replacements.

Its flat and slim design allows for discreet integration into any living space, while its 360° all-round inlet ensures precise and reliable detection of dangerous smoke or elevated carbon monoxide concentrations. In the event of an emergency, the detector emits a loud 85 dB alarm to alert occupants.



Image: Two Runidur 2-in-1 Smoke and CO Detectors, highlighting their compact design and the included 10-year battery.

SETUP AND INSTALLATION

The Runidur 2-in-1 Smoke and CO Detector is designed for easy installation, requiring minimal tools. Follow these steps to properly install your detector:

1. **Choose Location:** Select a suitable location for installation. For optimal protection, install detectors on every level of your home, inside each sleeping area, and in the hallway outside of each sleeping area. Avoid installing near windows, doors, or air vents where drafts might interfere with detection.
2. **Prepare Mounting Plate:** Use this plate as a template to mark the positions for drilling holes on your ceiling or wall.
3. **Drill Holes:** Using an electric drill, carefully drill holes at the marked positions. Insert the provided wall anchors into the drilled holes.
4. **Secure Mounting Plate:** Align the mounting plate with the drilled holes and secure it to the ceiling or wall using the provided screws. Ensure the plate is firmly attached.
5. **Install Detector:** Align the detector with the mounting plate and twist it clockwise until it clicks securely into place. The detector is designed to be easily installed in approximately 5 minutes.

Lightweight smoke detector Product installation



Image: Step-by-step diagram illustrating the installation of the detector, including drilling holes, inserting anchors, and mounting the unit.



Image: A hand using a drill to prepare the mounting surface for the detector.

Battery Activation

The detector comes with a pre-installed 10-year lithium battery. To activate the battery, ensure the detector is properly mounted onto its base. The device will automatically activate upon secure attachment to the mounting plate. No manual battery insertion is typically required for initial setup.



Image: An exploded view of the detector showing the internal battery compartment with the CR123A lithium battery.

OPERATING INSTRUCTIONS

Once installed, the Runidur detector continuously monitors for smoke and carbon monoxide. It is equipped with a test/mute button for easy functionality checks and alarm silencing.

Testing the Detector

It is recommended to test your detector weekly to ensure proper operation. To test:

- Press and hold the large central button (Test/Mute button) on the front of the detector.
- The alarm will sound a loud 85 dB signal, and the LED indicator will flash. This confirms the unit is functioning correctly.
- Release the button to stop the test.

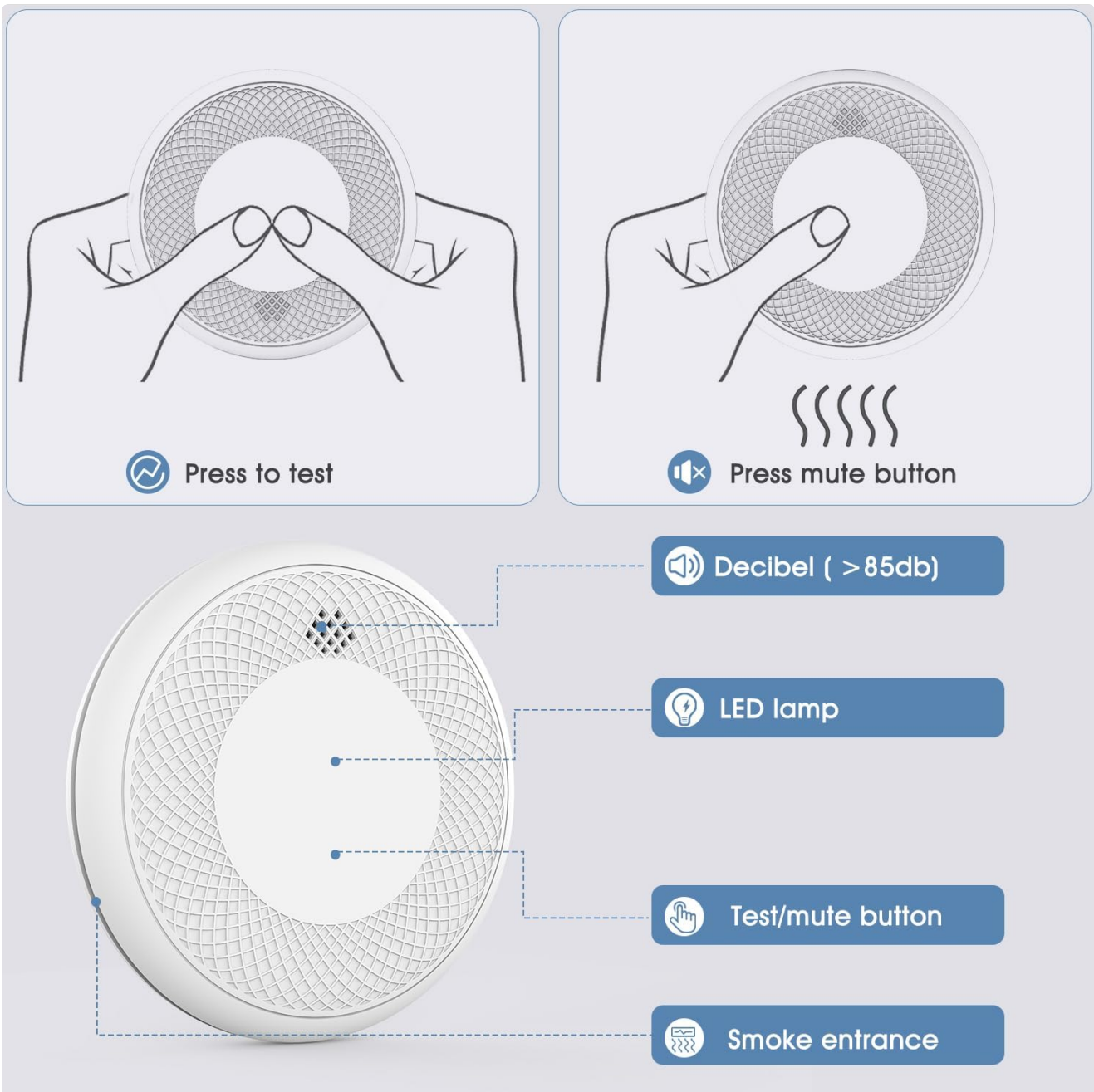


Image: A diagram illustrating the location of the test/mute button and other key components like the alarm speaker, LED lamp, and smoke entrance.



Image: A close-up of a finger pressing the central test button on the detector.

Alarm Functionality

The detector is designed to alert you to two types of hazards:

- **Smoke Alarm:** When the photoelectric sensor detects smoke or burning particles in the air, the alarm will

sound a continuous loud signal.

- **Carbon Monoxide (CO) Alarm:** If the electrochemical CO sensor detects an increased concentration of carbon monoxide, the alarm will sound a distinct pattern of beeps.

In both cases, the alarm volume exceeds 85 dB at 3 meters, ensuring it is clearly audible.



Image: A smoke detector mounted above a fireplace, emitting an alarm signal, illustrating its function in detecting smoke.



Image: A visual representation of the detector's 360-degree carbon monoxide detection capability, showing CO concentration levels.

Mute Function

In case of a false alarm (e.g., from cooking fumes), you can temporarily silence the alarm. Press the Test/Mute button once to activate the mute function. The alarm will silence for a short period, typically 5-10 minutes, before re-evaluating the air quality. If the hazardous condition persists, the alarm will reactivate.

Official Product Video

Your browser does not support the video tag.

Video: An official product video demonstrating the features and installation of the Runidur Smoke and Carbon Monoxide Detector. This video provides a visual guide to setting up and understanding the basic operation of the device.

MAINTENANCE

Regular maintenance ensures the longevity and effectiveness of your Runidur detector.

- **Cleaning:** Dust and debris can accumulate on the detector, potentially affecting its performance. Gently vacuum the detector's vents and exterior once a month using a soft brush attachment. Do not paint the detector, as this can block the sensor openings.
- **Testing:** Test the detector weekly using the Test/Mute button to confirm it is functioning correctly.
- **Battery Life:** The detector is equipped with a 10-year sealed lithium battery. This battery is designed to last the entire lifespan of the unit under normal operating conditions. If the detector begins to chirp periodically (e.g., once every 30-60 seconds), it indicates a low battery and the unit needs to be replaced.
- **End-of-Life Indication:** After approximately 10 years from the date of activation, the detector will signal its end-of-life, indicating that it needs to be replaced. Refer to the date on the back of the unit for replacement guidance.

TROUBLESHOOTING

If your Runidur detector is not operating as expected, refer to the following common issues and solutions:

Problem	Possible Cause	Solution
Detector chirps periodically (e.g., every 30-60 seconds).	Low battery.	The 10-year battery is sealed and not replaceable. This indicates the unit has reached its end-of-life or the battery is failing prematurely. Replace the entire detector unit.
Alarm sounds without apparent smoke or CO.	False alarm due to cooking fumes, steam, or dust.	Press the Test/Mute button to silence the alarm. Ventilate the area. If the alarm continues after ventilation, there might be a real hazard.
Detector does not respond to test button.	Unit not properly activated or faulty.	Ensure the detector is securely twisted onto its mounting plate. If it still doesn't respond, the unit may be faulty and needs replacement.
Alarm sounds continuously.	Presence of smoke or high CO levels.	Evacuate all occupants immediately. Call emergency services (fire department). Do not re-enter until the area is cleared by professionals.

If you experience persistent issues not covered here, please contact Runidur customer support.

SPECIFICATIONS

Feature	Detail
Brand	Runidur
Model Number	CS12
Power Source	Battery Powered (3V CR123A Lithium, included)
Battery Life	10 Years (continuous)
Sensor Type	Photoelectric (Smoke), Electrochemical (CO)
Alarm Volume	> 85 dB at 3 meters
Product Dimensions	3.15"D x 1.25"W x 3.2"H
Item Weight	0.3 Pounds (approx. 4.8 ounces)
Material	ABS (Flame Retardant)
Installation Type	Wall/Ceiling Mount (Screws and brackets included)

Lightweight smoke detector Product size

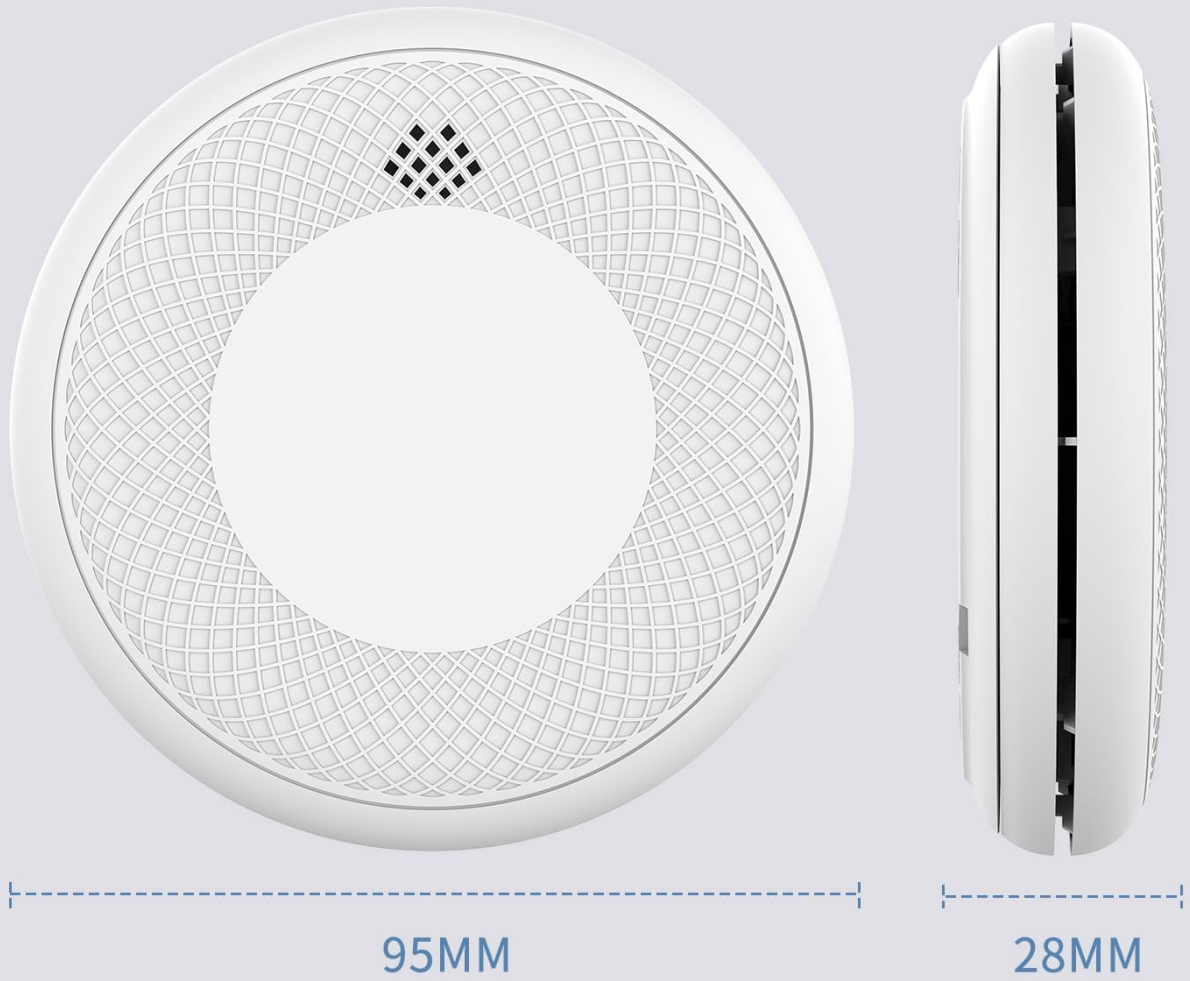


Image: A diagram illustrating the compact dimensions of the detector, showing its diameter and thickness.

Lightweight smoke detector Back display



Image: The back of the detector, displaying product information such as model number, battery type, and basic instructions.

WARRANTY AND SUPPORT

Runidur products are manufactured to high-quality standards. For specific warranty details, please refer to the packaging or contact Runidur customer support directly. In most cases, products with a 10-year sealed battery are covered for the duration of the battery life, indicating the expected operational lifespan of the unit.

For technical assistance, troubleshooting, or any product-related inquiries, please contact:

- **Manufacturer:** Runidur
- **Email:** sales0329@foxmail.com (as per product image PT04/Back display)
- **Online Support:** Visit the [Runidur Store on Amazon](#) for additional resources and contact information.

