

## LETIANPAI 1

# LETIANPAI 36m LED Neon Rope Lights User Manual

Model: 1

## 1. INTRODUCTION

Thank you for choosing the LETIANPAI 36m LED Neon Rope Lights. This product is designed to provide versatile and vibrant lighting for various indoor and outdoor applications. Featuring RGB color options, app and remote control, music synchronization, and a timer function, these lights offer a customizable lighting experience. Please read this manual thoroughly before installation and use to ensure proper operation and safety.

## 2. SAFETY INFORMATION

Please observe the following safety precautions to prevent damage to the product or personal injury:

- Ensure the power supply voltage matches the product's requirements before connecting.
- Do not cut the LED rope lights while connected to power.
- The controller unit is **not waterproof**. Protect it from moisture and direct water exposure.
- While the LED rope itself is rated IP65 for outdoor use, ensure all connections and the power adapter are protected from water if used outdoors. Exercise caution and ensure proper protection for all non-IP65 rated components.
- Do not attempt to repair or modify the product. Contact customer support for assistance.
- Keep out of reach of children.
- Avoid prolonged direct eye exposure to the LED light.
- Install using only the provided clips; the rope light does not have adhesive backing.

## 3. PACKAGE CONTENTS

Verify that all items are present in the package:

- 36m LED Neon Rope Light (2 rolls)
- Power Adapter
- Remote Control

- Mounting Clips and Screws
- User Manual (this document)

## 4. SPECIFICATIONS

Feature	Specification
Brand	LETIANPAI
Model Number	1
Length	36 meters (120 feet)
Color	RGB (Multi-color)
Light Source Type	LED
Color Temperature	6500 Kelvin
Ingress Protection (Rope)	IP65 (Waterproof for the rope light itself)
Control Methods	Remote Control, Mobile Application ("Lotus Lantern")
Special Features	Music Synchronization, Timer Function, Brightness/Speed Adjustment
Power Source	Corded Electric
Energy Efficiency Class	A ( <a href="#">EPREL Database Link</a> )
Item Weight	2.65 Kilograms

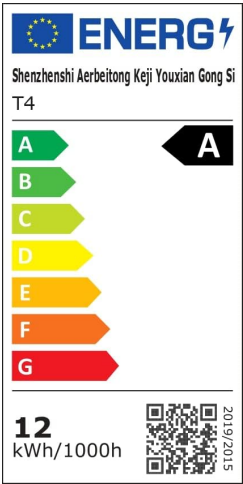


Image: Energy Efficiency Label showing class A for the LED Neon Rope Lights.

## 5. SETUP AND INSTALLATION

Follow these steps to install your LED Neon Rope Lights:

1. **Plan Your Design:** Before mounting, gently lay out the neon rope light to visualize your desired pattern or path on the wall or surface.

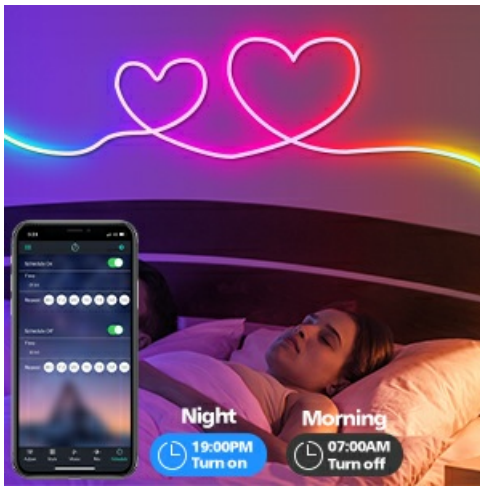


Image: Step 1 - Planning the path for the neon rope light.

2. **Install Fixing Clips:** Secure the provided fixing clips to the wall or surface along your planned path using screws. Ensure the clips are spaced appropriately to hold the rope light firmly.



Image: Step 2 - Installing fixing clips onto the wall.

3. **Insert Rope Light into Clips:** Carefully press the neon rope light into the installed fixing clips.



Image: Step 3 - Inserting the neon rope light into the clips.

4. **Connect Power Adapter:** Connect the power adapter to the neon rope light. Ensure the connection is secure.
5. **Connect to Power:** Plug the power adapter into a suitable electrical outlet. The lights are now ready for operation.

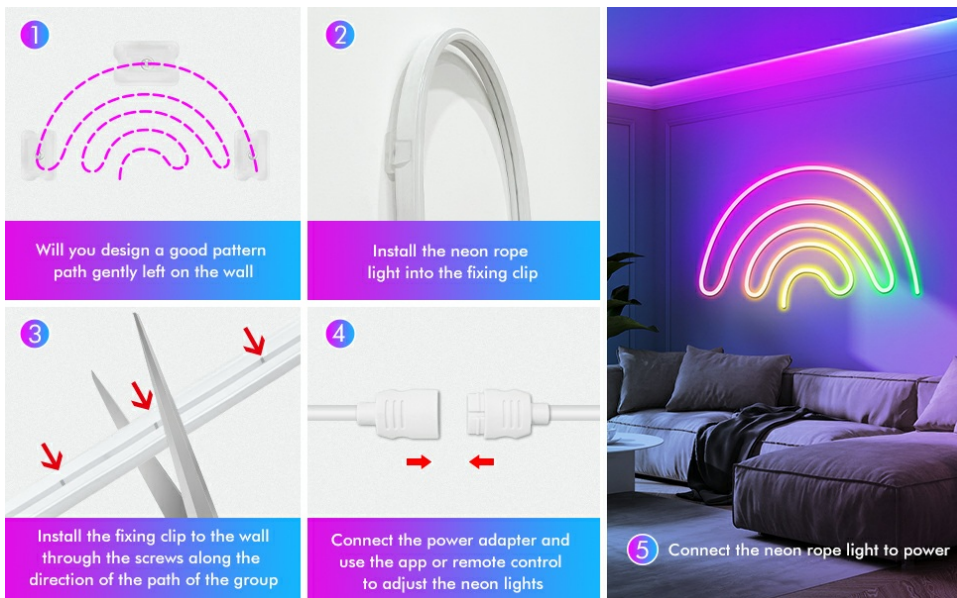


Image: Final installation example with the neon rope lights connected to power.

**Important Note for Outdoor Use:** While the rope light itself is IP65 rated, the power adapter and controller are not. For outdoor installations, ensure these components are housed in a waterproof enclosure or protected from direct exposure to rain and moisture.

## 6. OPERATING INSTRUCTIONS

Your LETIANPAI LED Neon Rope Lights can be controlled via the included remote control or a mobile application.

### 6.1 Remote Control Operation

The remote control allows for quick adjustments to your lighting. Point the remote directly at the controller unit for optimal response.



Image: Remote control and mobile app interface.

- **Power Button:** Turn the lights On/Off.
- **RGB Buttons:** Select specific Red, Green, or Blue colors.
- **Color Selection:** Choose from a variety of preset colors.
- **Brightness Adjustment:** Increase or decrease light intensity.

- **Mode Selection:** Cycle through various dynamic lighting modes.
- **Speed Adjustment:** Adjust the speed of dynamic modes.
- **Music Mode:** Activate music synchronization (see section 6.3).

## 6.2 Mobile Application Control ("Lotus Lantern")

For advanced control and customization, download the "Lotus Lantern" app from your smartphone's app store.

- **Download App:** Search for "Lotus Lantern" on the App Store (iOS) or Google Play Store (Android).
- **Connect:** Follow the in-app instructions to connect your lights via Bluetooth.
- **Features:** The app offers a wider range of features including:
  - Precise color selection from a color wheel.
  - Customizable dynamic modes.
  - Music synchronization (using phone's microphone).
  - Timer function for scheduled On/Off times.



Image: Mobile app control interface for LED neon rope lights.

## 6.3 Music Synchronization

The lights can react to music, changing colors and patterns according to the rhythm.

- **Remote Control:** Press the "Music" button on the remote.
- **Mobile App:** Select the music mode within the "Lotus Lantern" app. The app uses your phone's microphone to detect sound.





Image: Music and Mic Mode in action, with lights changing to the rhythm.

## 6.4 Timer Function

Set schedules for your lights to turn on or off automatically using the mobile application.

- Open the "Lotus Lantern" app.
- Navigate to the timer settings.
- Set your desired ON and OFF times.

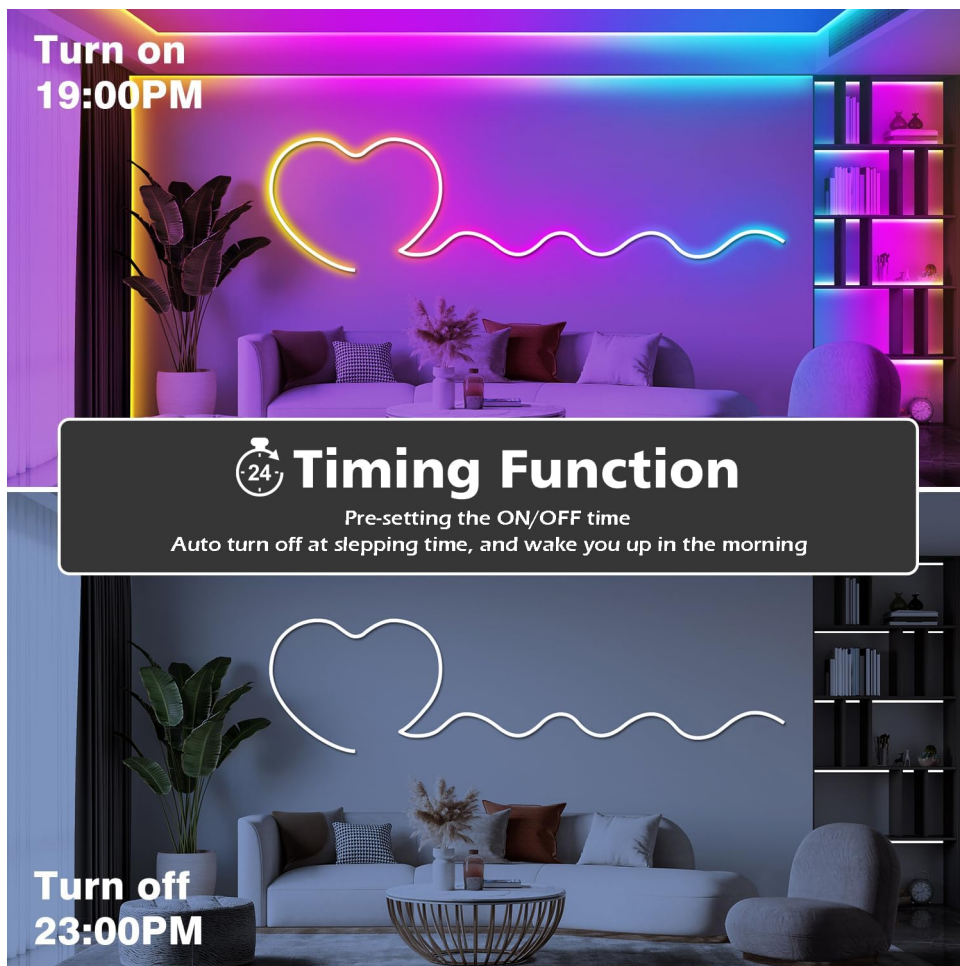


Image: Timer function setting for automatic on/off.

## 7. MAINTENANCE

---

To ensure the longevity and optimal performance of your LED Neon Rope Lights:

- **Cleaning:** Disconnect power before cleaning. Wipe the rope light with a soft, dry cloth. Do not use harsh chemicals or abrasive cleaners.
- **Storage:** If storing for an extended period, coil the rope light loosely and store it in a cool, dry place away from direct sunlight.
- **Inspection:** Periodically check the rope light and connections for any signs of damage or wear.

## 8. TROUBLESHOOTING

---

Problem	Possible Cause	Solution
Lights do not turn on.	No power, loose connection, remote battery dead.	Check power outlet, ensure all connections are secure, replace remote battery.
Remote control not working.	Remote battery dead, remote out of range, obstruction.	Replace remote battery, ensure remote is pointed at the controller, remove obstructions.
App cannot connect to lights.	Bluetooth off, lights not in pairing mode, app issue.	Ensure Bluetooth is enabled on your phone, restart the app, power cycle the lights.

Problem	Possible Cause	Solution
Lights flicker or display incorrect colors.	Loose connection, power fluctuation, damaged rope light.	Check connections, try a different power outlet. If problem persists, contact support.
Music sync not working.	Microphone blocked, volume too low, app permissions.	Ensure phone microphone is not blocked and volume is adequate. Check app permissions for microphone access.




## 9. WARRANTY AND SUPPORT

LETIANPAI offers a **100% satisfaction guarantee**. If you encounter any issues with your product, please contact our customer support team. We are committed to resolving any problems within 24 hours.

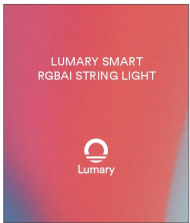
For assistance, please refer to the contact information provided with your purchase or visit the official LETIANPAI website.



### Related Documents - 1

	<a href="#">LeTianPai Home Wireless Charging Pad - Model CAC52 User Guide</a> Official guide for the LeTianPai Home Wireless Charging Pad (Model CAC52). Learn about setup, connection, precautions, warranty, and FCC compliance.
	<a href="#">LeTianPai Home Wireless Charging Pad - Model CAC52 User Guide</a> Official guide for the LeTianPai Home Wireless Charging Pad (Model CAC52). Learn about setup, connection, precautions, warranty, and FCC compliance.
<div>  User Manual  <small>Model: H70B1 Govee Curtain Lights</small></div>	<a href="#">Govee H70B1 Curtain Lights User Manual</a> Comprehensive user manual for the Govee H70B1 Curtain Lights. This guide details installation, setup, app pairing, troubleshooting, and specifications for these smart, IP65 waterproof, RGBIC decorative lights, suitable for indoor/outdoor use, Christmas, backdrops, and bedrooms.





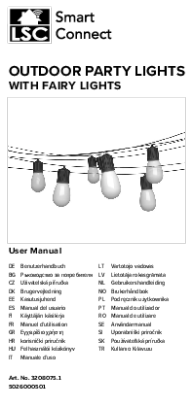
[Lumary Smart RGBAI String Light User Manual](#)

User manual for the Lumary Smart RGBAI String Light, detailing setup, app connection (EZ and AP modes), device configuration, and features like On/Off, Colour, Scene, Music, and Plan modes. Includes instructions for linking with Alexa/Google Assistant, specifications, safety warnings, and disposal guidelines.



[Our Glowing Hearts LED Neon Heart User Manual and Specifications](#)

Comprehensive user manual for the Our Glowing Hearts LED Neon Heart, covering installation, maintenance, troubleshooting, specifications, and warranty information.



[LSC Smart Connect Outdoor Party Lights with Fairy Lights User Manual](#)

User manual for LSC Smart Connect outdoor party lights with fairy lights, providing setup instructions, technical specifications, safety guidelines, and remote control functions. Compatible with 2.4GHz Wi-Fi networks.